

PROJECT PLACE

RENTAL LISTINGS - APRIL 2024



IN THIS GUIDE:

- Affordable Housing Providers.....p. 3
- Affordable Rental Listings.....p. 5
- Senior & Veteran Rental Listings.....p. 20
- Housing Resources & Programs.....p. 41

ABOUT THE HOUSING RIGHTS CENTER

The Housing Rights Center (HRC) is the nation's largest nonprofit civil rights organization dedicated to promoting and securing fair housing. HRC provides residents of **Los Angeles and Ventura Counties** with FREE:

- Housing Rights Counseling
- Discrimination Investigation & Enforcement
- Outreach and Public Education

NEED HELP NOW?

Call HRC's Housing Rights Hotline to speak with a trained Housing Counselor about your landlord-tenant rights and responsibilities.

- Toll-free hotline: **1-800-477-5977**
- TTY: 1-213-201-0867
- Email: info@housingrightscenter.org

WALK-IN CLINICS

HRC also offers free in-person landlord-tenant housing counseling in Alhambra, Carson, El Monte, Inglewood and Palmdale. Details: housingrightscenter.org/clinics.

WORKSHOPS Register for FREE at www.housingrightscenter.org/workshops.



Want to read Project Place online? Sign up at www.housingrightscenter.org to get the new issue in your email every month!

Apartment and House Hunter's Checklist

Before you start looking for a place, get organized and decide: 1) how much you can afford to pay, 2) what your space and living needs are, 3) how long you plan on staying, and 4) what sort of area you want to live in.

When you find a potential unit be sure that the answers to these questions are covered in or added to your rental agreement. And don't leave without a copy of any amendments-it's worth a detour to the local copy center.

1. When is the unit available? If the move-in date is impractical for you, ask if it's negotiable so that you don't pay for unoccupied time. Is the apartment currently occupied? Is the lease agreement month-to-month or year-to-year?
2. How much are rent and deposit fees, and when is rent due? If mailed, does the rent need to be received or postmarked by the due date?
3. Is there a grace period after the monthly rental due date? When is your payment considered late, and is there a penalty charge for late payment?
4. What are the terms for renewing the lease? Can you move into an apartment you like better if one becomes vacant? What are the conditions if you have to move before the lease expires?
5. Are pets allowed?
6. Are any utilities included in your agreement?
7. Are you allowed to have roommates? What is the policy on subletting?
8. Can you paint the walls or make other decorating changes?
9. Will you be responsible for any property maintenance? Is there an office onsite, or a 24-hour phone number in case of an emergency?
10. Is the unit a legal dwelling?

Application Screening Fee

A landlord can charge you an application screening fee to cover his/her out-of-pocket expenses for obtaining and processing your application. The application fee cannot be more than the landlord's actual out-of-pocket costs, and effective in 2024, can never be more than \$62.02. The landlord must give you an itemized receipt showing his/her expenses and must return any unused portion of the fee (for example, if the landlord did not check your references).

A Checklist of Things to Inspect

Here is a checklist of things you should look for when inspecting a rental property. All requirements mentioned are contained in the California Civil Code. Please slow down and look carefully before you sign on the dotted line.

- | | |
|---|--|
| <input type="checkbox"/> Structure (floors, walls, ceiling, foundation) | <input type="checkbox"/> Signs of insects, vermin, and rodents |
| <input type="checkbox"/> Plumbing | <input type="checkbox"/> Wiring and electricity |
| <input type="checkbox"/> Bathroom | <input type="checkbox"/> Fire safety |
| <input type="checkbox"/> Kitchen | <input type="checkbox"/> Trash and garbage receptacles |
| <input type="checkbox"/> Hot water | <input type="checkbox"/> General cleanliness of the area |
| <input type="checkbox"/> Heat | <input type="checkbox"/> Locks |
| <input type="checkbox"/> Light and ventilation | <input type="checkbox"/> Earthquake safety |

Get all Promises in Writing

Whatever promises the landlord makes, you should be aware that it is very common for vague, oral agreements to lead to misunderstanding, bitterness, and financial loss. The time to protect yourself is now. Get all promises in writing. Make two copies, one for the landlord and one for your own file.

The Landlord-Tenant Checklist

Another good self-protection device for both landlords and tenants involves taking an inventory of the condition of the premises at the time you move in, and then again when you move out. This means no more than making a brief written record of the condition of each room and having it signed by you and your landlord. Not only does the inventory give both an accurate record of the condition of the unit, but the act of making it provides a framework for communication and the resolution of potential disputes about security deposits when you move out. Contact the Housing Rights Center to receive a sample checklist. It is also a good idea to take pictures of your unit when you move in and move out.

If you have any questions about your rights and responsibilities as a tenant or landlord please contact the Housing Rights Center at (213) 387-8400 or (800) 477-5977 or e-mail us at info@housingrightscenter.org.

AFFORDABLE HOUSING PROVIDERS

This section lists companies and organizations that have multiple properties throughout Los Angeles County or Ventura County. Contact an organization for information on their properties and to apply.



HOUSING RIGHTS CENTER

WORKING FOR JUSTICE AND EQUALITY IN HOUSING

Affordable Housing Developers

These are some organizations that build affordable housing in the Los Angeles and Ventura areas. Visit their websites or contact them to stay up to date on their new projects and open waitlists.

Los Angeles County

Abode Communities

1149 S. Hill Street, Suite
700 Los Angeles, CA 90015
(213) 629-2702
www.abodecommunities.org

Caring Housing Ministries

3204 Rosemead Blvd., Suite 100
El Monte, CA 91731
(626) 300-2400
www.chm.org

Community Corporation of Santa Monica

1423 Second Street Suite B
Santa Monica, CA 90401
(310) 394-8487
www.communitycorp.org

A Community of Friends

3701 Wilshire Blvd., Suite
700 Los Angeles, CA 90010
(213) 480-0809
www.acof.org

East LA Community Corporation

530 South Boyle Avenue
Los Angeles, CA 90033
(323) 269-4214
www.elacc.org

Hollywood Community Housing Corporation

5020 Santa Monica Blvd.
Los Angeles, CA 90029
(323) 469-0710
www.hollywoodhousing.org

Homes for Life Foundation -

*Permanent supportive housing/or people
with chronic mental disabilities*
8939 S. Sepulveda Boulevard, Suite
460 Los Angeles, CA 90045
(310) 337-7417
www.homesforlife.org

LINC Housing Corporation

555 E. Ocean Blvd., Suite 900
Long Beach, CA 90802
(562) 684-1100
www.linchousing.org

Menorah Housing Foundation

Senior Housing
10991 W. Pico Blvd.
Los Angeles, CA 90064
(310) 477-1476
www.menorahhousing.org

Mercy Housing - California

1500 South Grand Ave. Suite 100
Los Angeles, CA 90015
(866) 338-0557
www.mercyhousing.org/california

SRO Housing Corporation

*Housing/or homeless and low-
income individuals*
1055 W. 7th St. Suite 3250
Los Angeles, CA 90017
(213) 229-9640
www.srohousing.org

West Hollywood Community Housing Corporation

7530 Santa Monica Boulevard, Ste. #1
West Hollywood, CA 90046
(323) 650-8771
www.whchc.org

Ventura County

Cabrillo Economic Development Corporation

702 County Square Drive
Ventura, CA 93003
(805) 659-3791
www.cabrilloedc.org

Many Mansions

1425 E. Thousand Oaks Blvd.
Thousand Oaks, CA 91362
(805) 497-0344
www.manymansions.org

AFFORDABLE RENTAL LISTINGS

This section lists contact information for properties with available affordable units. Contact a property directly for more information and to apply.



HOUSING RIGHTS CENTER

WORKING FOR JUSTICE AND EQUALITY IN HOUSING

Application Acceptance 03/13/2024—04/12/2024

Affordable Housing

The Azalea

4507 S. Main Street

Potential Permanent Supportive Housing (PSH) residents are referred from the Coordinated Entry System (CES) for Los Angeles.

Potential residents for the General Affordable units are selected via lottery system.



Lottery Date (General Affordable Units): 04/29/2024

Anticipated Occupancy Start: 5/2024

The Azalea is a brand new 61 unit affordable housing development consisting of thirty-one (31) supportive housing apartments for formerly homeless households and families. Through NPLH funds, twenty-three (23) of the thirty-one (31) units are designated for chronic homeless with mental illness verified through the Department of Mental Health (DMH). Rental subsidy from the City of Los Angeles Housing Authority (HACLA) will be provided for the 31 supportive housing apartments. One unit is for on-site property management staff. Two units are set-aside for displaced tenants due to the sale of the property. The remaining twenty-seven (27) apartments are designated for individuals and families with income below 30% or 60% of the Area Median Income (AMI). Accessible units available for individuals who need accessibility features.

Community Features (all accessible):

- Community rooms (two)
- Community garden
- Landscaped courtyard
- On-Site laundry room
- Play area and bicycle parking
- Fitness center
- Multiple roof decks

Accessible Unit Features

- Lowered kitchen cabinets that are wheelchair accessible as are the bathroom sinks
- Front controls on stove/cook top
- Bath and toilet grab bars
- Talking smoke/carbon monoxide alarms w/flashing light
- Stove, refrigerator
- 31 furnished supportive housing units

Methods for Obtaining and Accepting Applications:

- Applications accepted online or by mail.
- 27 non-PSH units are filled via lottery.
- Accepting Applications 03/13/2024 –04/12/2024 available online at: Eahhousing.org/apartments/the-azalea, the ACHP Registry at accesshousingla.org and Housing.LACounty.gov.

- By mail. Only applications postmarked by 04/12/2024 will be accepted for the lottery. To obtain an application packet in the **mail**, please call, email **or** submit a letter or postcard indicating your name, address and telephone number to:

The Azalea
4507 S. Main Street, Los Angeles, CA 90037
Attention: Kelly Hanson, Regional Manager
Office: (323) 499-4183 Hours: 8 AM—5PM
AZ-Management@eahhousing.org
TDD: (800) 735-2929 or CA Relay Service: 711

Resident Services:

- Case management with personal services plan
- Life skills workshops, money management
- Employment assessment and job preparation
- Social and recreational activities



HI Lic. RB-16985 | CA Lic. 853495



The Azalea

2023 Income and Rent Limits (rent and income limits subject to change) for potential applicants referred through the Coordinated Entry System (CES) and general affordable (GA) units.

Unit Size AMI	# of Units	Square Feet	Maximum Income Limit	Minimum Income Limit (N/A for CES)	Rent Maximum (Gross)	Occupancy
Studio 30%	10	405sf—456sf	\$26,490—\$30,270	N/A	Subsidized	1-2 persons
1 Bedroom 30%	19	540sf-713sf	\$26,490—\$30,270	N/A	Subsidized	1-2 persons
2 Bedroom 30%	2	920sf-956sf	\$34,050—\$37,830	N/A	Subsidized	4-5 persons

2023 Income and Rent Limits (rent and income limits subject to change) for potential applicants for the general affordable (GA) units.

Unit Size AMI	# of Units	Square Feet	Maximum Income Limit	Minimum Income Limit (2X Rent)	Rent Maximum (Gross)	Occupancy
1 Bedroom 30%	2	540sf—713 sf	\$26,490—\$34,050 Formerly Displaced	\$17,016 Preference	\$709	1-3 persons
Studio 60%	10	405sf—456sf	\$52,980—\$60,540	\$31,776	\$1324	1-2 persons
1 Bedroom 60%	13	540sf-713sf	\$52,980—\$68,100	\$34,056	\$1419	1-3 persons
2 Bedroom 60%	4	920sf-956sf	\$60,540—\$81,720	\$40,848	\$1702	2-5 persons

Accessible Units (AUs) types and Area Median Income (AMI) levels for Coordinated Entry System (CES) and general affordable (GA) designated units.

Accessible Feature Type	Studio	1 Bd	2 Bd	Total
Mobility	2 CES @30% AMI 1 CES @60% AMI	3 CES @ 30% AMI 1 GA @ 30% AMI 2 GA @ 60% AMI	1 GA @ 60% AMI	10
Communication	2 CES @ 30% AMI	1 CES @ 30% AMI 1 CES @ 60% AMI 2 GA @ 60% AMI	1 GA @ 60% AMI	7
Total	5	10	2	17

The Azalea

Accessible units are available for occupancy by persons with mobility impairments or hearing, vision, or other sensory impairments. Individuals requiring accessible units may indicate their need on the application, via email, phone call or by mailing the request. The Azalea will take reasonable nondiscriminatory steps to maximize the utilization of such units by eligible individuals.

This housing is offered without regard to race, color, religion, sex, gender, gender identity and expression, familial status, national origin, citizenship status, immigrant status, primary language, marital status, ancestry, age, sexual orientation, disability, source of income (including receipt of Section 8 and other similar vouchers), genetic information, military or veteran status, arbitrary characteristics, or any other basis currently or subsequently prohibited by law. Individuals with a disability have the right to ask for and receive reasonable accommodations and to request auxiliary aids.

A person with a disability may request a reasonable accommodation (a reasonable change in policies), a reasonable structural modification, an accessible unit or the provision of auxiliary aids and services, in order to have equal access to a housing program. If you or anyone in your household has a disability, and because of that disability requires a specific accommodation, modification or auxiliary aids or services to fully use our housing services, you may contact our staff for a reasonable accommodation form. The use of the property's Reasonable Accommodation Form is not required. You may provide a letter or document from your third party profession certifying your disability and accommodation needs.

HOOVER STREET APARTMENTS

ACCEPTING APPLICATIONS

Hoover Street Apartments is a 21-unit low-income apartment community located just a few blocks away from the 10, 101 and 110 freeways in the city of Los Angeles and within walking distance to shops, restaurants, a senior center, a medical clinic and public transportation. We have on-site laundry facilities, professionally landscaped grounds, and a large community room for our residents' enjoyment. Each apartment includes a full kitchen with a stove, dishwasher, and a refrigerator.

Rental Unit Amenities

- On-Site Laundry
- On-Site Manager
- Secure Intercom Entrance
- Elevators to All Floors

Other Amenities

- Within walking distance to shops, restaurants, a senior center, a medical clinic and public transportation.

HOOVER STREET APARTMENTS

962 S. Hoover Street
 Los Angeles, CA 90006
 T 213.387.7085
 E-mail: PNH_Hoover@TELACU.com



Hoover Street Apartments
962 S. Hoover St.
Los Angeles, CA 90006
NOW ACCEPTING APPLICATIONS

Hoover Street Apartments is subject to applicable laws, regulations and guidelines.

Eligibility Requirements—Shelter Plus Care

The Head of Household (Primary Applicant) must meet the following criteria:

- 18 years of age or older.
- Primary Applicant has HIV/AIDS **AND** is chronically homeless.

A chronically homeless person is an unaccompanied homeless individual with a disabling condition who has either been continuously homeless for a year or more OR has had at least four (4) episodes of homelessness in the past three (3) years. To be considered chronically homeless, persons must have been sleeping in a place not meant for human habitation (e.g., living on the streets) and/or in an emergency homeless shelter during that time.

The Household's annual income may not exceed the applicable income limits:

50 percent of Median Income Limits (2023)

1 Person	2 Persons
\$44,150	\$50,450

The unit must be the household's only residence.

All applicants must meet screening criteria (i.e., landlord verification, etc.). In addition, all household members must demonstrate they have legal residency in the United States in order to qualify for full governmental assistance.

Hoover Street Apartments will not discriminate on the basis of race, color, sex, religion, age, disability, national origin, marital status, sexual orientation, ancestry, source of income, medical condition, or any other arbitrary basis in the leasing, rental, or other disposition of housing or related facilities, or in the use or occupancy thereof.

For further information, please contact us at 213.387.7085.



OPEN WAITING LISTS FOR ACCESSIBLE UNITS

If you are interested in applying for an available unit (mobility/hearing/vision) listed below, please visit accesshousingla.org to submit your application.

LOS ANGELES, CA

Contact: Debora Parra at debora@ccscla.org or 323-846-2500 Ext: 1173

[View Listing](#): Roberta Stephens Villa 2 - 1113 E 27th St, Los Angeles, CA 90011

- Unit 2-103 (2bd/1bath Mobility): Rent \$1,551; AMI 60%; Occupancy: 2-4. Income: \$57,000 - \$71,460
- Unit 2-106 (3bd/1.5bath Mobility): Rent \$1,015 AMI 35%. Occupancy 3-6. Income: \$37,300 - \$48,370

[View Listing](#): Roberta Stephens Villa 1 - 1035 E 27th St, Los Angeles, CA 90011

- Unit 1-108 (2bd/1bath Hearing/Vision): Rent \$1,551; AMI 60%; Occupancy 2-4; Income: \$57,000 - \$71,460

LOS ANGELES COUNTY, CA

Thomas Saffran & Associates

Contact: (424) 551-2424; TTY: (800) 855-7100 or tsahousing.com

GARDENA, CA

Contact: Angel Hipolito Delgado at maya@lawtownhomes.org or (323) 777-7825

[View Listing](#): Maya Town Homes – 12005 S. Broadway, Gardena, CA 90061

- Unit 101 (4bd/2 bath Hearing/Vision): Rent \$2,194; Minimum Income: 2x/rent

WILMINGTON, CA

100% CES; Contact CES; SPA 8; referral required

[View Listing](#): 841 N Banning Blvd, Wilmington, CA 90744

- Unit 2-103 (2bd/1bath Mobility): Rent \$1,551; AMI 60%; Occupancy: 2-4. Income: \$57,000 - \$71,460
- Unit 2-106 (3bd/1.5bath Mobility): Rent \$1,015 AMI 35%. Occupancy 3-6. Income: \$37,300 - \$48,370

Thomas Safran & Associates

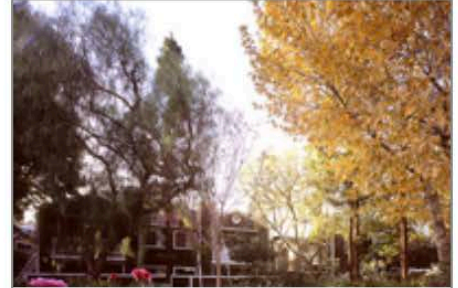
(310) 820-4888



Bird Park
234 Bird Park Road
Avalon, CA
(310) 510-2471



Drake Manor
200 West Drake Street
Pomona, CA
(909) 593-9615



Strathern Park
11111 Strathern Street
Sun Valley, CA
(818) 768-4424



Sunnyside Villas
5271 E. Kings Canyon Road
Fresno, CA
(559) 251-2531



Veterans Village of Glendale
331 Salem Street
Glendale, CA
(818) 956-7970



Villa Ramona
13030 Ramona Blvd.
Baldwin Park, CA
(626) 814-3455



Strathern Park East
11047 Strathern Street
Sun Valley, CA
(818) 768-4424

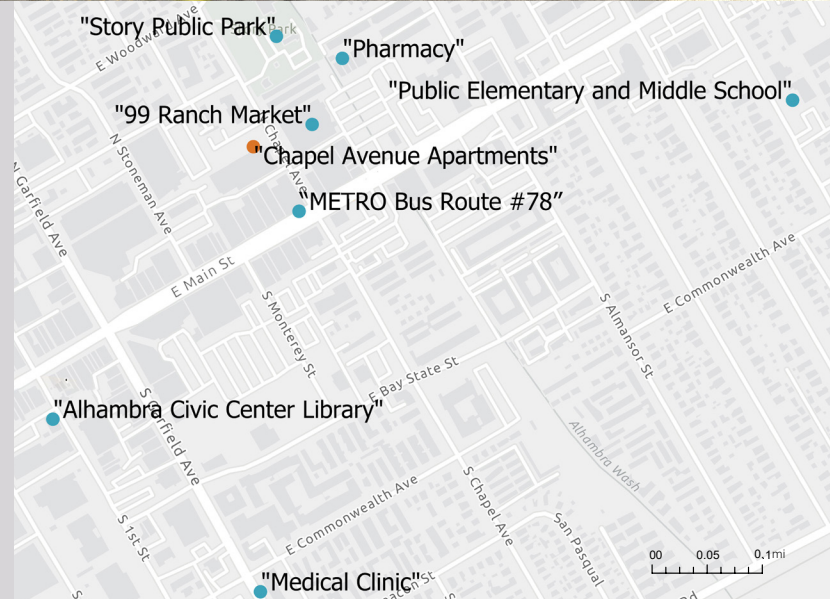
Chapel Avenue Apartments

103 North Chapel Avenue, Alhambra CA | *Coming Winter 2024*



Overview

- Located in Alhambra Main Street Corridor
- 100% Affordable Housing Residential Community comprised of 44 units
- Serves households earning between 30% and 60% of the Los Angeles County Area Median Income
- On-site services provided to residents free of charge
- Unit Mix: 7 Studios, 14 One-bedrooms, 11 Two-bedrooms, 12 Three-bedrooms



Community Room



Outdoor Playground



Roof Deck



On-Site Laundry

For development updates please call (949) 414-9631

RELATED

PROJECT FUNDED BY



HILDA L. SOLIS
First District

RAYMOND JAMES®



Supported by funding from
L.A. COUNTY MEASURE H
REAL HELP. LASTING CHANGE.



This project has been made possible by financing from the City of Alhambra, Los Angeles County Development Authority, San Gabriel Valley Regional Housing Trust, Measure H, California Tax Credit Allocation Committee, the U.S. Department of Housing and Urban Development Section 8 Project Based Voucher Program, and Raymond James.



OPEN WAITING LISTS FOR ALL AGES

Bird Park

234 Bird Park Road
Avalon, CA
(310) 510-2471

Drake Manor

200 West Drake Street
Pomona, CA
(909) 593-9615

Strathern Park

11111 Strathern Street
Sun Valley, CA
(818) 768-4424

Strathern Park East

11047 Strathern Street
Sun Valley, CA
(818) 768-4424

Sunnyside Villas

5271 E. Kings Canyon Road
Fresno, CA
(559) 251-2531

Veterans Village of Glendale

331 Salem Street
Glendale, CA
(818) 956-7970

OPEN WAITING LISTS FOR FAMILIES

(families requiring 2 or more bedrooms)

Caroline Severance Manor

2927 W. Francis Street
Los Angeles, CA, 90005
213-375-3906

[VIEW](#)

Tolton/Montclair Court

4200 Montclair Street
Los Angeles, CA, 90018
(323) 734-1869

[VIEW](#)

The Vineyard Townhomes

385 S. Vine Street
Ste 142 Anaheim, CA, 92805
(714) 817-7994

[VIEW](#)

San Felipe

730 N Herbert Ave
#101, Los Angeles, CA, 90063
(323) 780-2711

[VIEW](#)

Jefferson Park Terrace

3023 South Western Avenue
Los Angeles, CA, 90018
(323) 419-0714

[VIEW](#)

Grand and Venice

1500 South Grand Avenue
Los Angeles, CA, 90015
(213) 741-9374

[VIEW](#)

<u>Property Name</u>	<u>Waitlist</u>	<u>Population</u>	<u>Address</u>	<u>City</u>	<u>Zip Code</u>	<u>La...er Area</u>	<u># of Units</u>	<u>Unit Size</u>	<u>Contact and A1mlication Information</u>
Orange Grove Apartments						San Fernando Valley			
Plaza on Main			333 W Main St	Alhambra	910801	San Gabriel Valley		1Br	(626) 289-5800
Azusa Apartments			805 S. Cerritos Ave.	Azusa	91702	San Gabriel Valley			(323) 930-2300
Fourth Street Apartment Homes			1562W.4thSt.	Baldwin Park	91706	San Gabriel Valley		1Br, 2Br, 3Br, 4Br	Juan Rubio, Acqua Properties (818) 439-6665
SHARE! - DJ's Path House	Open		Cross Streets: Clark Ave. & Rosecrans Ave.	Bellflower					1-877-742-7349
Walnut Street Apartments			9823 Walnut St.	Bellflower	90706		30		562-204-5466; Available units posted at www.apartments.com
Arbor Green			21227 S Figueroa St	Carson	90745				(714) 282-2520
Carson Arts Colony	Open		21205MainStrcct	Carson	90745		46	1 Br, 2Br, 3Br	Escmeralda (424) 318-1770 www.carsonartsapartments.com; Application available through email or onsite.
Via425 Apartments			401 E Carson St	Carson	90745				Ashley(424) 477-5047; www.via425.com
Courier Place			111 S College Ave	Claremont	91711	San Gabriel Valley		1Br for Seniors (62+); 2Br and 3Br for all ages	(909) 624-8589
SHARE! - Mary's Blessings	Open		Cross Streets Rosecrans & Long Beach Blvd.	Compton					1-877-742-7349
HFLPalms Court	CES referral only	Chronically Wlhousesdor chronically with mental illness	3819-3821 Motor Ave	Culver City	9032	West Los Angeles	21	1Br	David Cuezon hflpalmscourt@sbcglobal.net (866) 5069746 or (310)2026937
Homeward Bound		Persons with developmental disabilities or low income	6000 Canterbury Dr	Culver City	90230	West Los Angeles		1Br	(310) 988-4000
Tilden Terrace			11042-11058 Washington Blvd, Culver City, CA	Culver City	90232	West Los Angeles	33	Multi-Family: 1br, 2br,3br	T: 213.627.9611, (310) 836-1300; E: lainfo@lifund.org
La Quinta			38301 11thSt	East Palmdale	93550	Antelope Valley		1Br,2Br	Call managerat(661) 265-9911 to make apointment
Longhorn Pavilion			36523 25th St	East Palmdale	93550	Antelope Valley		2Br,3Br	(661) 266-2997
Palmdale Desert Club Aots			37902 N 20th St	East Palmdale	93550	Antelope Valley		2Br,3Br	(818) 789-5550; (661) 273-7731
Baldwin Rose Veterans Apcrtments		Veterans	9953 Rose Ave	El Monte	91731	San Gabriel Valley		1Br	(909) 448-2688
Blessed Rock ofEl Monte			3348 Tyler Ave	El Monte		San Gabriel Valley		1Br	(626) 448-8589; (626) 448-2688
Cherrylee Gardens			11620 Cherrylee Dr	El Monte	91732	San Gabriel Valley		1Br	626) 443-4646; (866) 933-2293 ext 20590
El Monte Veterans Village		Unhoused, Veterans	11240 Ramona Blvd	El Monte	91731	San Gabriel Valley		1Br	(866) 624-8589
El Monte Veterans Village		Unhoused, Veterans	11240 Ramona Blvd.	El Monte	91731			1Br	(626) 377-9901
El Monte Veterans Village			11338 McGirk St.	El Monte				Multifamily	(626) 448-7882
El Monte Veterans Village			11154 BonwoodRd	El Monte				Multifamily	(626) 448-7882
El Monte Veterans Village			11332 & 11332 1/2 Coffield Ave	El Monte				Multifamily	(626) 448-7882
El Monte Veterans Village			3850 Penn Mar Street	El Monte				Multifamily	(626) 448-7882
El Monte Veterans Village			4400, 4402, 4406 Maxson Rd.	El Monte				Multifamily	(626) 448-7882
El Monte Veterans Village			11338 McGirk St	El Monte		San Gabriel Valley			(626) 448-7882
El Monte Veterans Village			1154 Bonwood Rd	El Monte		San Gabriel Valley			(626) 448-7882
El Monte Veterans Village			11332 & 11332 1/2 Cotfield Ave	El Monte		San Gabriel Valley			(626) 448-7882
El Monte Veterans Village			3850 Penn Mar St	El Monte		San Gabriel Valley			(626) 448-7882
El Monte Veterans Village			4400, 4402, 4406 Maxson Rd	El Monte		San Gabriel Valley			(626) 448-7882
El Monte Veterans Village			10562 Santa Fe Dr	El Monte		San Gabriel Valley			(626) 478-0760
El Monte Veterans Village			5004 Farago Ave.	El Monte-Temple City	91780			1Br	(626) 350-6139
El Monte Veterans Village			5004 Farago Ave	El Monte-Temple City	91780	San Gabriel Valley			(626) 377-9901
SHARE! - House ofJackie Orange Grove Apartments	Open		Cross Streets Normandie Ave. & W Redondo Beach Blvd. 6941 Owensmouth Avenue	Glendale	91303	San Fernando Valley		1 Br, 2Br, 3Br	1-877-742-7349 (818) 704-5983
SHARE! - Cerise House	Open		Cross Streets: 135th St. & Cerise Ave.	Hawthorne					1-877-742-7349
PATH Villas Eucalyptus			240WLimcSt	Inglewood	90301				714-221-5611
Arbor Fields Apartments			530 W Jackman St	Lancaster	93534			1 Br, 2Br, 3Br	(661) 942-0026
Arbor Fields Apartments			530 W Jackman St	Lancaster	93534	Antelope Valley		1Br, 2Br, 3Br	(661) 942-0026
Cedar Ridge Apartments	Open		2105 EastAvenue]-8	Lancaster	93534	Antelope Valley		3Br	(661)-723-7538
Imagine Village		Vcrrans	43517 SahuayoSt	Lancaster	93535	Los Angeles	64	Studio, 1 Br, 2Br, 3Br	https://housinglacounty.gov/pdfs/ImagineVillagePSHFlycr.pdf
Imagine Village			43517 Sahuayo St	Lancaster	93935	Antelope Valley		1Br	(661) 361-1819
Law-cl Crest Apartments			531 W Jackman St	Lancaster	93534	Los Angeles		1 Br, 2Br, 3Br	C11 (661) 948-3422 to make an appointment.
Law-cl Crest Apartments	Open Closed through 2021		531 W Jackman St	Lancaster	93534	Antelope Valley		1Br, 2Br, 3Br	(661) 948-3422 or (661) 9480905 (FAX)
Sierra Villa East			621 E. Avenue I	Lancaster	93535	Los Angeles		1Br	(661) 942-0663
Sierra Villa East			621 E. Avenue I	Lancaster	93535	Antelope Valley			(661) 942-0663
Village at Beechwood Apartments	Open		44063 Beech Ave.	Lancaster	93534	Antelope Valley		1Br, 2Br, 3Br	Christina (661) 948-7212; Application available onsite
SHARE! - Back to Basics	Open		Cross Streets Pacific Ave. & W52ndSt.	long Beach					1-877-742-7349
SHARE!-Court	Open		Cross Streets: E Anaheim St. & Gaviota Ave.	long Beach					1-877-742-7349
SHARE! - Inner Image 1704	Open		Cross Street: E Anaheim St. & Gaviota Ave.	long Beach					1-877-742-7349
SHARE! - Inner Image 1720	Open		Cross Streets PCH & Cherry	long Beach					1-877-742-7349
SHARE! - Joyful Solutions	Open		Cross Streets: J St. & N Crystals Court	long Beach					1-877-742-7349
SHARE! - New Magnolia House	Open		Cross Streets: Orange Ave. & E Artesia Blvd.	long Beach					1-877-742-7349
SHARE! - TUI Daisy	Open		Cross Street: E Anaheim St. & Gaviota Ave.	long Beach					1-877-742-7349
SHARE! - TUI Walnut	Open		Cross Streets: E Anaheim St. &GaviotaAvc.	long Beach					1-877-742-7349
SHARE! - Transforming Lives Norman	Open		Cross Streets: Anaheim St. & Alamitos Ave.	long Beach					1-877-742-7349
The Spark at Midtown			1900 long Beach Blvd	long Beach	90806				
Vista Del Puerto			1836 Locust Avenue	Long Beach					

Abbey Apartments			625 S San Pedro St Los Angeles, CA 90014	Lo Angeles	90014			Multi-Family and JB,	(1213) 683-0522
Aldridge Apartments			801 W 23rd St	Lo Angeles	90007			Multi-Family; Jin	(866) 933-2293 ext.35755 (323) 665-2736
Allesandro Street Apts.			1934 Allesandro St	Lo,Angelo,	90039			Disabled; lbr	(213) 628-1036
Alvarado Gardens			1800 N. Alvarado St	Lo,Angelo,	90026			Multi-Family; lbr; 2in,3in	(323) 660-0605, (650) 968-2660
Angelina Apartments			1336W Angelina St Los Angeles, CA 90026	Lo,Angelo,	90026			Multi-Family; 2br; 3in,4in	(213)482-1600
Angelus Plaza			2555 Hill St.	Lo,Angelo,	90012			Multi-Family; lbr	(866) 933-2293 ext.40357
Adams Square		Special needs	1563 South Arlington Ave.	Lo,Angelo,	90019				(323) 757-0670 Ex*105
Baldwin Hills Apartments			4063 Nicolet Ave.	Lo,Angelo,	90008			Multi-Family; lbr; 2in, 3in	(323) 227-5260
Baldwin Hills Apartments			4063 Nicolet Ave.	Lo,Angelo,	90008			Multi-Family; lbr; 2in, 3in	(323) 227-5260
Barnsdall Court Apartments			1632 Normandie Ave.	Lo,Angelo,	90027			Multi-Family; lbr	(323) 906-1604
Bartlett Hill Manor			625 North Bunker Hill Ave.	Lo,Angelo,	90012			Multi-Family; lbr	(213) 626-6555
Beverly City Lights			107 S. Carondelet St	Lo,Angelo,	90057			Jin, 2in, 3in	(213) 380-7935
Boyle Apartment,			427 S. Boyle Ave.	Lo,Angelo,	90033			Multi-Family; lbr; 2in	(213) 252-5997
Caroline Severance Manor		Special needs	2936 West Eight St.	Lo,Angelo,	90005			Multifamily	(213) 375-3906
Casa Rampart Apartments			512 S.Rampart Blvd.	Lo,Angelo,	90057			Studios	(213) 383-3525
Casanova Gardens				Lo,Angelo,	90012			213,	(323) 223-4198
Cesar Chavez Gardens			Gardens 555 W. Cesar E. Chavez	Lo,Angelo,	90012			2Br, 3Br, 4Br	(323) 437-9706
Chariton Apartments			2010 Chariton Apartment	Lo,Angelo,	90034	Central Los Angeles	8	Studio, lbr, 2Br, 3Br, 4Br	(866) 933-2293 Ext 79425
Cochran City Light,			1315 South Cochran Ave.	Lo,Angelo,	90019			Multi-Family; 3br	(323) 936-6497
Coronel Apartments			2641 S Manhattan Pl.	Lo,Angelo,	90018				(213) 884-7172
Coronel Apartments			1601 N.Hobart Blvd.	Lo,Angelo,	90027				
Cuatro Vientos Apartments				Lo,Angelo,	90032			Multi-Family; 1-4 Bedroom	(323)221-1800
East LA North I			3333N.Mission Rd.	Lo,Angelo,	90031			Multi-Family; lbr; 2in	(323) 227-5260
Evergreen Village Apartments			420 North Evergreen Ave.	Lo,Angelo,	90033			Multi-Family; lbr-4in	(323) 780-0612
Figueroa Place			1320 W Sunset Blvd.	Lo,Angelo,	90026			2Br, 4Br	
Flor #01 Lofts			401 E 7th St.	Lo,Angelo,	90014				Call SRHT at (213) 873-1680 or 213-683-0522 for availability
Grand & Venice			1500 S. Grand Ave.	Lo,Angelo,	90007			Multi-Family	(213)741-9374
Hancock Gardens Apt			303 S. Van Ness Ave.	Lo,Angelo,	90031			Multi-Family; 2br, 3in	(323)231-4174
Hollywood City Light,			127th St.	Lo,Angelo,	90044			Multi-Family; 2br, 3in, 4b	(323)779-1645
Harbour Community		Unhoused, Victims of DV	12157 San Fernando Rd	Lo,Angelo,	91342	San Fernando Valley		lbr, 2Br	(818) 364-7039
Hoover Street Apartments		IDV/AIDS	962 S. Hoover St	Lo,Angelo,	90006			Multi-Family	(213) 387-7085
Imogen Housing			716 Imogene Ave.	Lo,Angelo,	90026			Multi-Family; 2br, 3in, 4in	(323) 660-6102
Innes Height,		disabled	1245 E. Innes Ave.	Lo,Angelo,	90026				(844) 349-8886
I.A. PRO			1011 N. Cumming St.	Lo,Angelo,	9033			Multi-Family; lbr; 2in	(323)221-0172
Las Margaritas Apartments			137 N. Soto St	Lo,Angelo,	90033			Multi-Family; Studio-3br	(323) 262-2453
Leland Courts			5234 Melrose Ave.	Lo,Angelo,	90038			Studios, lbr	(323)231-1107 (323) 883-9000
Linda Vista Senior Apartments			630 S. St. Louis St.	Lo,Angelo,	90023			Senior; Studios, Jin	(323) 685-2826
Lomm Height,			3327 E. Sabina St	Lo,Angelo,	90023			Multi-Family; 2br, 3in	(323) 780-1700
Lomm Height,			3710 E. J. Egel St.	Lo,Angelo,	90063				213-400-0002
Mariposa Place			5030 Santa Monica Blvd.	Lo,Angelo,	90029			Multi-Family; lbr; 2in, 3in, 4in	(323) 644-1878
Roland Curtis East/West			1077 W. 38th Street	Lo,Angelo,	90037				(213)261-5068; rollandcurtis@abodecommunities.org
SHARE! - Bright Path	Open		Cross Streets S Avalon Blvd. & Slauson Ave.	Lo,Angelo,					1-877-742-7349
SHARE! - Grateful House	Open	Women	Cross Streets: S Avalon Blvd. & E Martin Luther King Jr. Blvd.	Lo,Angelo,					1-877-742-7349
SHARE! - Kimberly's House	Open		Cross S - : S Grameny Pl. & W. 81st Street	Lo,Angelo,					1-877-742-7349
SHARE! - Precious House	Open		Cross Streets: San Pedro St & E Adams Blvd.	Lo,Angelo,					1-877-742-7349
Silverlake New Hope Apartment,			2301 Brier Ave.	Lo,Angelo,	90006				(213) 387-7085 (323) 838-8556
Springbaven			1853 E. 118th Street	Lo,Angelo,	90059				www.linhousing.org (562) 257-5100 (call cent.,) (323) 734-2574
The Crenshaw Villas			2645 S Crenshaw Blvd	Lo,Angelo,	90016				(323) 804-3156
Tune, Apt		disabled	7000-14 S Hoover St	Lo,Angelo,	90044			Multi-Family; 2br	(213)240-1255
Waterloo Heights Apts			1011 Waterloo St.	Lo,Angelo,	90028				
Westmont Vista	Reserem, Only	Unhoused/families and TAY	1763 W Imperial Hwy	Lo,Angelo,	90047	Los Angeles	38	1 Br, 2Br, 3Br	213-225-2728
William Mead Homes			1316 N Main St	Lo,Angelo,	90012			Multi-Family	(323) 221-9197
PATIMetro Villas			320-340 Madison Ave	Lo, Angeles	90004				(323) 644-2200; path@epath.org
1375 St Andrews Apartments			1365-1375 St Andrews Place	Los Angeles	90028				(323) 462-2572
Hollywood City Light,			525 W 127th St	Lo Angeles- A l h e n s / W -	90044	C - . J Lo, Angeles			(323) 779-1645
Turner, A p -	Open		7000-14 S Hoover St	Lo Angeles- A l h e n s / W -	90044	C - . J Lo, Angeles	32	213,	Mariane White (323) 804-3156 o.-(323) 486-5324; application available onsite Monday- Friday from 9am- 5pm; www.solary-entcom
Baldwin Hills Apartments			4063 Nicolet Ave	Lo Angeles- Baldwin Hills/ Crenshaw/ Leimert Park	90008	C - . J Lo, Angeles			(323) 227-5260
Boyle Apartment,			427 S Boyle Ave	Lo Angeles- Boyle Heights	90033	C - . J Lo, Angeles		JB, 213,	(213) 252-5997
Cuatro Vientos Apartments			5331 E Huntington Drive N	Lo Angeles- Boyle Height,	90032	C - . J Lo, Angeles		JB,,213,,313,,413,	(323) 221-1800
Evergreen Village Apartments			420 N Evergreen Ave	Lo Angeles- Boyle Height,	90033	C - . J Lo, Angeles		JB,,213,,313,,413,	(323) 780-0612
I.A. PRO I			1011 N Cumming St	Lo Angeles- Boyle Height,	90033	C - . J Lo, Angeles		JB,,213,	(323)221-0172
Las Margaritas Apartments			137N Soto St	Lo Angeles- Boyle Height/Chin	90033	Central Los Angeles		Studio, lbr, 2Br, 313,	(323) 262-2453

Linda Vista Senior Apartments			630 S St Louis St	Los Angeles - Boyle Heights	90023	Central Los Angeles		Studio, 1Br	(323) 685-2826
HmtVillage			6941 Owensmouth Avenue	Los Angeles - Canoga Park	91303			3Br, 2Br	Angelita (818) 704-5983; hart@abodecommunities.org;
NoblePinesApartments	Co,od		21617 SaticoySt	Los Angeles - Canoga Park	91304	San Fernando Valley	68	1Br, 2Br, 3Br, 4Br	Sreplwre (818) 884-2160
East I A North I			3333 N Mission Rd	Los Angeles - Central LA	90031	Central Los Angeles		1Br, 2Br	(323) 227-5260
Bartlett Hill Manor			625 N Bunker Hill Ave	Los Angeles -	90012	Central Los Angeles		##	(213) 626-6555
Casanova Gardens			433 Casanova St	Los Angeles -	90012	Central Los Angeles		2B,	(323) 223-4198
Cesar Chavez Gardens			555 W Cesar E Chavez	Los Angeles -	90012	Central Los Angeles		2Br, 3Br, 4Br	(323) 437-9706
VistaHomes		Persons with developmental disabilities or who are blind.	23210 Justice	Los Angeles -	90012	Central Los Angeles			(818)778-1900; (818) 708-1740
William Mead Homes			1316NMainSt	Los Angeles -	90012	Central Los Angeles			(323) 221-9197; 2132522500
A b b e y A p -			625 S San Pedro St	Los Angeles - DTLA	90014	Central Los Angeles		##	(213) 683-0522
Alegria Apartments			801 W23 St	Los Angeles - DTLA	90007	Central Los Angeles		##	(866) 933-2293 Ext 35755
Angelus Plaza			2555Hil1St	Los Angeles - DTLA	90012	Central Los Angeles		##	(866) 933-2293 Ext 40357
Grend&Venice			1500 S Grand Ave	Los Angeles - DTLA	90007	Central Los Angeles			(213)741-9374
The Clark Residence			306 S LomaDr	Los Angeles - DTLA	90017	Central Los Angeles		Multi-Family: 1br	(213) 484-1329
Young Apanemm			1621 S Grand Ave	Los Angeles - DTLA	90015	Central Los Angeles		1Br/Multifamily	(866) 933-2293 Ext 11864
Lorena Heights A p - - -	Co,od		3327 E Sabina St	Los Angeles - East LA	90023	East Los Angeles		2Br, 3Br	(323) 780-1700
			3710 Bagel StB	Los Angeles - East LA	90063	East Los Angeles			(213) 400-0002
Allesandro Street Apartments		Persons with disabilities	1934 Allesandro St	Los Angeles - Echo Park/Silverlake	90039	Central Los Angeles		##	(323) 665-2736; (213) 628-1036
Alvarado Gardens			1800 N Alvarado St	Los Angeles - Echo Park/Silverlake	90026	Central Los Angeles		1Br, 2Br, 3Br	(323) 660-0605; (650) 968-2660
A n g e l i o a A p -			1336W AngelioaSt	Los Angeles - Echo Park/Silverlake	90026	Central Los Angeles		2Br, 3Br, 4Br	(213)482-1600
Imogen Housing			716 Imogene Ave	Los Angeles - Echo Park/Silverlake	90026	Central Los Angeles		2Br, 3Br, 4Br	(323) 660-6102
mne,Heights		Persons with disabilities	1245 E Innes Ave	Los Angeles - Echo Park/Silverlake	90026	Central Los Angeles			(844) 349-8886
Silverlake New Hope Apanemm		III/AIDS	2301 Brier Ave	Los Angeles - Echo Park/Silverlake	90006	Central Los Angeles			(213) 387-7085; (323) 838-8556
Women's Village Project		III/AIDS; Disability	1660 Rockwood St	Los Angeles - Echo Park/Silverlake	90026	Central Los Angeles		2B,	(213) 483-6654; (714) 282-2520
Balboa G,rule A p -			10620 Balboa Blvd	Lo,Angele,-Granadallills	91344	SanFern,ndo V,lley		##	(818) 831-1432
Balboa G,rule A p -			10620 Balboa Blvd.	Lo,Angele,-Granadallills	91344	SanFern,ndo V,lley		##	818-831-1432
Beverly City Lights			107 S Carorulet St	Lo,Angele,-Hollywood	90057	Cenual Lo, Angele,		1Br, 2Br, 3Br	(213) 380-7935
Casa Rampart Apartments			5 1 2 S - B 1 v d	Lo,Angele,-Hollywood	90057	Cenual Lo, Angele,		Studios	(213) 383-3525
Leland Courts			5234 Melrose Ave	Lo,Angele,-Hollywood	90038	Cenual Lo, Angele,		Studios, 1Br	(323) 231-1107; (323) 883-9000
RoyalAp'l'I			772-6NVanNessAve	Lo,Angele,-Hollywood	90038	Cenual Lo, Angele,		Studio, 1Br, 2Br	(323) 231-1107; (323) 883-9000
The Courtyard at La Brea			1145NLaBreaAve	Lo,Angele,-Hollywood	90038	Cenual Lo, Angele,			(323) 654-2766
Waterloo Heights Apartments		Persons with disabilities	1011 Waterloo St	Lo,Angele,-Hollywood	90028	Cenual Lo, Angele,			(213)240-1255
The Depot at Hyde Park	Co,od		6527 Crenshaw Blvd	Lo,Angele,-Hyde Park	90043		48	1 Br, 2 Br, 3 Br	213-433-0208 ° 211 ° (888) 877-5379 ° California Relay 711 www.depotathydepark.com
Caroline Severance Manor			2936 W Eight Street	Lo,Angele,-Koeau,wn	90005	Cenual Lo, Angele,			(213) 375-3906
Magnolia City Lights		Special needs	2885 Leeward Ave	Lo,Angele,-Koeau,wn	90005	Cenual Lo, Angele,			(213) 365-8135
SHARE! - A Place of Peace	Open		Cross Streets Shenandoah Ave. & Slauson Ave.	Lo,Angele,-u,deraHeights					1-877-742-7349
Hancock - -			303 S Van Ness Ave	Lo,Angele,-Lincoln Heights	90031	Cenual Lo, Angele,		2Br, 3Br	(323)231-4174
MariposaPlace			5030 Santa Monica Blvd	Lo,Angele,-LittleArmenia	90029	Cenual Lo, Angeles		III,2III,3III,4III	(323) 644-1878
Barnsdall Court Apartments			1632 NormandieAve	Los Angeles - Los Feliz	90027	Cenual Lo, Angeles		III	(323) 906-1604
Priooes Apartments			1648 N Kingsley Dr	Los Angeles - Los Feliz	90027	Cenual Lo, Angeles		Multi-Family: 1br	(213) 252-5997
A r - S q u a r e		Special needs	1553 S Arlington Ave	Lo, Angeles - Mid City	90019	Cenual Lo, Angeles			(323) 757-0670 ext 105
Codmm City lights			1315 S Cochran Ave	Lo, Angeles - Mid City	90019	Cenual Lo, Angeles		3B,	(323) 936-6497
The Cleo Apartments			345 SAlexandria.Ave	Lo, Angeles - Mid City	90020	Cenual Lo, Angeles			(213) 389-1050
			2641 S Manhattao H	Lo, Angeles - Mid City	90018	Cenual Lo, Angeles			(213) 884-7172
Academy Village A p -	Co,ood		5225 Blakeslee Ave	Lo,Angeles- N - Hollywood	91601	SanFernandoValley	248	III,2III	CoontactKathyWood(Manager) (818) 985-8277; equityapartments.com
Bella Vista	Open		15520 Parthenia St	Lo,Angeles- N - Hills	91343	SanFernandoValley		4B,	818-767-4700
Perthelia Townhomes			15520 Parthenia St	Lo,Angeles- N - Hills	91343	SanFernandoValley		3B,	(818) 901-6019
S&AProperties	N/A: Private			Lo,Angeles- N - Hills	91343	SanFernandoValley		III,2III,3III	818-901-6019
			8435 OrianAve	Lo,Angeles- N - Hills	91343	San Fernando Valley		3B,	(818) 904-6019

Academy Village A p -			5225 Blakeslee Ave.	Lo, Ailgcle, - North Hollywood	91601	San Fernando Valley		!Br, 2Br	(844) 529-4848 (818) 600-6676; moorpark.bergasandgarfield.com; mo01park@woodbridgegarfield.com, moorpark@bergasandgarfield.com
Woodbridge Park A p -			11220 Moorpark St	Lo, Ailgcle, - North Hollywood	91602	San Fernando Valley		!Br, 2Br, 3Br	
Hoover Street A p -			963 Hoover St	Lo, Ailgcle, - Pico Union	90006	CentraLo, Angeles			(213) 387-7085
Nuevo Pico Union Apartments SHARE! - Foundation for Homeless Heroes	Open	liv/AIDS Med45+	1335 W. 17th Street Cross Streets: S Weston Ave. & Venice Blvd.	Lo, Ailgcle, - Pico Union	90006	CentraLo, Angeles		2Br, 3Br	(213) 483-2767 1-877-742-7349
Roscoe Park Apartments			21025 Roscoe Blvd	Lo, Ailgcle, - S. ead	91304	San Fernando Valley		2Br, 3Br	(818) 998-3201 (323) 838-8556 (323) 622-0006
NYUMBA Apts San Pedro New Hope Courtyard Apts			962 S - Hoover St 1124 S. Palos Verdes St	Lo, Ailgcle, - San Pedro	90006 90731				(310) 831-6851 (323) 838-8556
Washington 722 TOD			722, 726, 732, 736 E. Washington Blvd.	Lo, Ailgcle, - Southeast	90021		55	1Br & 1Bth, 2Br & 1Bth, 3Br & 2Bth	(213) 748-1557
Harbour Community		houseless; domestic violence	12157 San Fernando Rd.	Lo, Ailgcle, - Sylmar	91342	San Fernando Valley		!Br, 2Br	(818) 364-7039
Ivy Terrae			13751 Sherman Way	Lo, Ailgcle, - Van Nuys	91405	San Fernando Valley		!Br, 2Br, 3Br, 4Br	(818) 781-3519
United Cerebral Palsy Evergreen Manors Garfield Villas		Persons with disabilities	111 S Margarita Ave	Monrovia Moutery/Parc	91016 91754	San Gabriel Valley San Gabriel Valley		4Br, 5Br	(818) 782-2211 (626) 458-1462 (626) 300-0680
Pacific Bridge Adult Res Fae Garfield Villas			500 S Mcph=in Ave	Moutery/Parc	91754	San Gabriel Valley		!Br	(323) 721-1655 (626) 300-0680
Angeles City Lights Camino Gonzales Farmworker A . -	Open		13915 West Oxnard 481 W Gomales Rd	Oxnard	91410	Ventura Cowty	49	3Br, 4Br	Call (818) 988-0275 to receive application through email or onsite; www.triumphresidential.com (805) 981-9909
Casa San Juan Apartment			500 Hobson Way	Oxnard		Ventura Cowty			(805) 483-7122
Chanoc Jsalids Park Apartments Homes			931 Bismark Way	Oxnard	93033	Ventura Cowty		!Br, 2Br, 3Br	(805) 486-2906
Colonial House Farmworker A . -	Open	USDA Farmworker AND either U.S. Citizen or Permanent Resident	705 N. Oxnard Blvd.	Oxnard	93030	Ventura Cowty			(805) 485-7840; Required: Last 2 years of taxes, DL, SS or Perm Res Card w/Social, last 6 months of bank statements; https://oxnard.pwapt.com/contact.pbp
D Street Apartments			110 N D St	Oxnard		Ventura Cowty			(805) 4967-4948
Gateway Plaza			719 S Oxnard Blvd	Oxnard	93030	Ventura Cowty			(805) 385-3443
Holiday Manor Apartments		low income	1924 Camino Del Sol	Oxnard	93030				(805) 485-3191
Holiday Manor A p -			1924 Camino Del Sol	Oxnard	93030	Ventura Cowty			(805) 485-3191; Roots: !Br \$1,224; 2Br: \$1463, 3Br: \$1683
Las Villas de Paseo	Closed		5493 Cypress Rd.	Oxnard	93033	Ventura Cowty			(805) 986-5010
Las Villas de Paseo	Open		5493 Cypress Rd	Oxnard	93033	Ventura Cowty	72	2Br, 3Br	Call Amy Mon - Fri from 8am - 5pm at (805) 986-5010 to make an appointment. Current waitlist has 100 applicants.
Many Mansions - Houshlg Conral	Closed	TAY (18-24); persons with mental illness disability	110 North D St.	Oxnard		Ventura Cowty			(805) 496-4948
Many Mansions - Terry's Place Meta Street Farmworker Family Apartments	Closed		352 & 354 Chmnd Islands Blvd 501 Meta St	Oxnard	93033 93030	Ventura Cowty			(805) 497-0344 (805) 659-3791
Paseo Del Luz, Apartments			47 W Gonzales Rd	Oxnard		Ventura Cowty			(805) 983-7126
Paseo Sama Clara/ Del Rio A . -			287 Riverpark Blvd.	Oxnard					(805) 485-2260
Paseo Sama Clara/ Del Rio A . -			287 Riverpark Blvd	Oxnard		Ventura Cowty			(805) 485-2260
RHF Sonata at Riverpark			401 Danvers River St	Oxnard	93036	Ventura Cowty			(805) 531-5899 (805) 486-7700;
Terraza de Cortes			201 Carmelia Ct	Oxnard	93030	Ventura Cowty			terrazedelascortes@levinegroups.com
Terry's Place			352 & 354 Chmnd Islands Blvd	Oxnard	93033	Ventura Cowty			(805) 497-0344
Villa Cesar Chavez Farmworker Family A -	Open	USDA program. Restriction: ONLY head of household must be a current, retire, or disable agricultuiml worker	5559 Salvador Ili	Oxnard	93033	Ventura Cowty	51	2Br, 3Br, 4Br	Call Kristina (Resident Manager) at (805) 271-1067 or email cheredia@cabrilloedc.org; applicants will be offered unit in the order they applied in; www.cabrilloedc.org
Villa Cesar Chavez Farmworker Family A -			5559 Salvador Drive	Oxnard					(805) 271-1067
Vills Madera	Open		1051 North A St	Oxnard	93030	Ventura Cowty			(805) 988-9035
Villa Solimar Family A . - - Cabrillo BCD			902 Donlon St	Oxnard		Ventura Cowty			(805) 483-5188
Vineyard Gardens	Closed		161 W Stroube St	Oxnard	93036	Ventura Cowty			(805) 604-0474; www.wng.com
Wagon Wheel Apartments	Open	No Pet	510 Winchester Ili	Oxnard	93036	Ventura Cowty	25 property, 120 units managed by Raquel	1Br, 2Br, 4Br	Raquel (805) 604-4520; Application available via email and onsite; www.cabrilloedc.org Ariana (661) 285-3118 or Cyotlia (661) 285-3118; apartments.com/casablancaapptliving.com 800-801-8440 ext 7206 (661) 266-2997 (661) 947-6336 (626) 405-9447 (626) 405-9447 (626) 405-9447
Casa Blanca Apartments	Priority given in order of application	All ages.	4160 East Avenue R	Palmdale	93532	Aorelope Valley	200	2Br, 3Br	
Coursons Arts Colony West Longhorn Pavilion			East Avenue Q II 36523 25th St East	Palmdale Palmdale	93550 93550	Los Angeles Los Angeles		2Br, 3Br 2Br, 3Br	
Palmdale East Q Apartments Acapella of Pasadena Acapella of Pasadena Acapella of Pasadena			1000 East Ave Q 145 Chestnut St 231 S DeLacey Ave 231 S. DeLacey Ave.	Palmdale Pasadena Pasadena Pasadena	93550 91103 91103 91103	Aorelope Valley San Gabriel Valley San Gabriel Valley		!Br, 2Br, 3Br Multifamily	(661) 947-6336 (626) 405-9447 (626) 405-9447 (626) 405-9447
Allen House			1808 Las Lunas	Pasadena	91104			!Br fur disabled/elderly	Damioon Lee (626) 449-2919
Casa D'Orol			1370 N Dominion Ave.	Pasadena	91104			!Br fur disabled/elderly	(626) 449-2919
Dudley House		Persons with disabilities/ Seniors	2131 E Broadway St	Pasadena	91104	San Gabriel Valley	62	!Br fur disabled/elderly; 2 Br for all MJES.	(626) 449-2919

SENIOR & VETERAN HOUSING LISTINGS

This section lists contact information for housing that is reserved for seniors and/or veterans, or offers services targeted to seniors and/or veterans.



HOUSING RIGHTS CENTER

WORKING FOR JUSTICE AND EQUALITY IN HOUSING

ACCEPTING LOTTERY APPLICATIONS

April 1, 2024 - April 30, 2024

Section 8/Tax Credit
Community for 62+

Located in Whittier, CA



www.tsahousing.com



leffingwell@tsaproperties.com



Office: (562) 947-1334

TTY: (800) 855-7100

HOW TO APPLY

Applications Available: April 1, 2024

Application Deadline: April 30, 2024

Complete **ONLINE** at:
<https://www.tsahousing.com/property/leffingwellmanor>

Download and **print** at:
<https://www.tsahousing.com/property/leffingwellmanor>

Pick up **ON-SITE** at:
11410 Santa Gertrudes, Whittier, CA 90604

Mail Completed Applications To:
Leffingwell Manor, Attn: Manager's Office
11410 Santa Gertrudes, Whittier, CA 90604

Mailed applications must be postmarked by April 30, 2024, to be included in the lottery.



Leffingwell Manor

11410 Santa Gertrudes, Whittier, CA 90604



ABOUT THE PROPERTY

Leffingwell Manor is an 89-unit, Section 8/Tax Credit property located in Whittier for people with a 62+ head of household.

All one bedroom units come nicely appointed with wall-to-wall carpeting, stove, refrigerator, waste disposal, heating and air conditioning. The property features a spacious community room where residents gather to participate in activities including coffee socials, exercise classes, arts and crafts, computer classes, bingo and monthly resident birthday celebrations.

PROPERTY AMENITIES

- Community Room with kitchen
- Piano
- Pool Table
- On-Site Laundry Facility
- Fitness Room
- Computer Lounge
- BBQ Area
- Putting Green
- Lush Landscaping

RENT

Leffingwell Manor is an 89-unit, Section 8/Tax Credit property located in Whittier for people with a 62+ head of household. There is no minimum income required and households will pay approximately 30% of their adjusted monthly income in rent as determined. **Subject to change**

Unit Size	Occupancy
1 BD	Min. 1 / Max. 2

INCOME LIMITS

Applicants must have incomes below the 60% AMI for Los Angeles County for their household size. See the chart below. **Subject to change.**

1 Person	2 People
\$52,980	\$60,540

PARKING

Parking is limited. Please inquire with management for more information.

Free interpretation services available. Please contact (562) 947-1334 or leffingwell@saproperties.com to make this request. TTY: (800) 855-7100. Hay servicios de interpretacion gratuitos disponibles. Porfavor llame a (562) 947-1334 o envie un correo electronico a leffingwell@saproperties.com para obtener ayuda. TTY: (800) 855-7100

This housing is offered without regard to race, color, religion, sex, gender, gender identity and expression, familial status, national origin, citizenship status, immigrant status, primary language, marital status, ancestry, age, sexual orientation, disability, source of income (including receipt of Section 8 and other similar vouchers), genetic information, military or veteran status, arbitrary characteristics, or any other basis currently or subsequently prohibited by law.

This property has accessible and adaptable units for people with disabilities. People with disabilities may ask for, and receive reasonable accommodations, modifications, and auxiliary aids, including in the application process. Please contact leffingwell@saproperties.com to make this request.

This property is a 100% non-smoking community



ACEPTANDO SOLICITUDES PARA LA LOTERÍA

1 de abril de 2024 - 30 de abril de 2024



Comunidad de Sección 8/
Crédito Fiscal para mayores
de 62 años

Ubicado en Whittier, CA



www.tsahousing.com



leffingwell@tsaproperties.com



Oficina: (562) 947-1334

TTY: (800) 855-7100

CÓMO APLICAR

Solicitudes disponibles: 1 de abril de 2024

Fecha límite de solicitud: 30 de abril de 2024

Completa **ONLINE** en:
<https://www.tsahousing.com/property/leffingwellmanor>

Descargar e imprimir en:
<https://www.tsahousing.com/property/leffingwellmanor>

Recoja una solicitud **EN EL SITIO** en:
11410 Santa Gertrudes, Whittier, CA 90604

Envíe las solicitudes completas a:
Leffingwell Manor, Attn: Manager's Office
11410 Santa Gertrudes, Whittier, CA 90604

Las solicitudes enviadas por correo deben estar mataselladas antes del 30 de abril de 2024 para ser incluidas en la lotería.



Leffingwell Manor

11410 Santa Gertrudes, Whittier, CA 90604



SOBRE LA PROPIEDAD

Leffingwell Manor es una propiedad de 89 unidades, Sección 8/Crédito fiscal ubicada en Whittier para personas con cabeza de familia de más de 62 años.

Todos los apartamentos de una habitación están bien equipados con alfombras de pared a pared, estufa, refrigerador, triturador de basura, calefacción y aire acondicionado. La propiedad cuenta con una espaciosa sala comunitaria donde los residentes se reúnen para participar en actividades que incluyen reuniones sociales con café, clases de ejercicios, artes y manualidades, clases de computación, bingo y celebraciones mensuales de cumpleaños de los residentes.

AMENIDADES DE LA PROPIEDAD

- Salón comunitario con cocina
- Piano
- Mesa de billar
- Lavandería
- Gimnasio
- Área de computadoras
- Área de barbacoa
- Campo de golf
- Paisajes exuberantes

ALQUILER

Leffingwell Manor es una propiedad de 89 unidades, Sección 8/Crédito fiscal ubicada en Whittier para personas con cabeza de familia de más de 62 años. No se requiere un ingreso mínimo y los hogares pagarán aproximadamente el 30 % de su ingreso mensual ajustado en alquiler como lo determino. **Sujeto a cambios**

Tamaño # de personas

1 HAB Min. 1 / Max. 2

LÍMITES DE INGRESOS

Los solicitantes deben tener ingresos inferiores al 60% del AMI del condado de Los Ángeles para el tamaño de su hogar. Vea el gráfico a continuación. **Sujeto a cambios.**

1 persona	2 personas
\$52,980	\$60,540

ESTACIONAMIENTO

El estacionamiento es limitado. Consulta con la administración para obtener más información.

Free interpretation services available. Please contact (562) 947-1334 or leffingwell@saproperties.com to make this request. TTY: (800) 855-7100. Hay servicios de interpretación gratuitos disponibles. Por favor llame a (562) 947-1334 o envíe un correo electrónico a leffingwell@saproperties.com para obtener ayuda. TTY: (800) 855-7100

Esta vivienda se ofrece sin distinción de raza, color, religión, sexo, género, identidad y expresión de género, estado familiar, origen nacional, estado de ciudadanía, estado de inmigrante, idioma principal, estado civil, ascendencia, edad, orientación sexual, discapacidad, fuente de ingresos (incluido el recibo de la Sección 8 y otros comprobantes similares), información genética, estado militar o de veterano, características arbitrarias o cualquier otra base actualmente o posteriormente prohibida por la ley.

Esta propiedad cuenta con unidades accesibles y adaptables para personas con discapacidad. Las personas con discapacidades pueden solicitar y recibir adaptaciones, modificaciones y ayudas auxiliares razonables, incluso en el proceso de solicitud. Comuníquese con leffingwell@saproperties.com para realizar esta solicitud.

Esta propiedad es una comunidad 100% para no fumadores.



ACCEPTING LOTTERY APPLICATIONS

May 1, 2024 - May 31, 2024

Section 8/Tax Credit
Community for 62+

Located in Inglewood, CA



www.tsahousing.com



inglewoodmeadows@tsaproperties.com



Office: (310) 672-3988
TTY: (800) 855-7100

HOW TO APPLY

Applications Available: May 1, 2024

Application Deadline: May 30, 2024

Complete **ONLINE** at:
<https://www.tsahousing.com/property/inglewoodmeadows>

Download and **print** at:
<https://www.tsahousing.com/property/inglewoodmeadows>

Pick up **ON-SITE** at:
1 S Locust Street, Inglewood, CA 90301

Mail Completed Applications To:
Inglewood Meadows, Attn: Manager's Office
1 S Locust Street, Box 281-D, Inglewood, CA 90301

Mailed applications must be postmarked by May 31, 2024, to be included in the lottery.



Inglewood Meadows

1 S Locust Street, Inglewood, CA 90301



ABOUT THE PROPERTY

Inglewood Meadows is a 199-unit, Section 8/Tax Credit property located in the city of Inglewood, CA for people 62+ head of household.

Each one bedroom unit has wall-to-wall carpeting, blinds, heating and air-conditioning. Kitchens are fully equipped with a stove and refrigerator. The property also has on-site management and maintenance staff. The large outdoor courtyard features barbecue areas.

Residents can play billiards and ping pong in the community room, as well as participate in group activities such as bingo, line dancing and monthly birthday celebrations. Inglewood Meadows provides convenient access to public transportation, health facilities, community services and a senior center.

PROPERTY AMENITIES

- Community Room with kitchen
- Exercise Room
- On-Site Laundry Facilities
- Courtyard with BBQ
- Computer Lab

RENT

Inglewood Meadows is a 199-unit, Section 8/Tax Credit property located in the city of Inglewood, CA for people 62+ head of household. There is no minimum income required and households will pay approximately 30% of their adjusted monthly income in rent as determined. **Subject to change**

Unit Size

Occupancy

1 BD

Min. 1 / Max. 2

INCOME LIMITS

Applicants must have incomes below the 60% AMI for Los Angeles County for their household size.

See the chart below. **Subject to change.**

1 Person

\$52,980

2 People

\$60,540

PARKING

Parking is limited. Please inquire with management for more information.

Free interpretation services available. Please contact (310) 672-3988 or inglewoodmeadows@tsaproperties.com to make this request. TTY: (800) 855-7100. Hay servicios de interpretacion gratuitos disponibles. Porfavor llame a (310) 672-3988 o envie un correo electronico a inglewoodmeadows@tsaproperties.com para obtener ayuda. TTY: (800) 855-7100

This housing is offered without regard to race, color, religion, sex, gender, gender identity and expression, familial status, national origin, citizenship status, immigrant status, primary language, marital status, ancestry, age, sexual orientation, disability, source of income (including receipt of Section 8 and other similar vouchers), genetic information, military or veteran status, arbitrary characteristics, or any other basis currently or subsequently prohibited by law.

This property has accessible and adaptable units for people with disabilities. People with disabilities may ask for, and receive reasonable accommodations, modifications, and auxiliary aids, including in the application process. Please contact inglewoodmeadows@tsaproperties.com to make this request.

This property is a 100% non-smoking community



ACEPTANDO SOLICITUDES PARA LA LOTERÍA

1 de mayo de 2024 - 31 de mayo de 2024



Comunidad de Sección 8/
Crédito Fiscal para mayores
de 62 años

Ubicado en Inglewood, CA



www.tsahousing.com



inglewoodmeadows@tsaproperties.com



Oficina: (310) 672-3988
TTY: (800) 855-7100

CÓMO APLICAR

Solicitudes disponibles: 1 de mayo de 2024

Fecha límite de solicitud: 31 de mayo de 2024

Completa **ONLINE** en:
<https://www.tsahousing.com/property/inglewoodmeadows>

Descargar e imprimir en:
<https://www.tsahousing.com/property/inglewoodmeadows>

Recoja una solicitud **EN EL SITIO** en:
1 S Locust Street, Inglewood, CA 90301

Envíe las solicitudes completas a:
Ingelwood Meadows, Attn: Manager's Office
1 S Locust Street, Box 281-D, Inglewood, CA 90301

Las solicitudes enviadas por correo deben estar mataselladas antes del 31 de mayo de 2024 para ser incluidas en la lotería.



Inglewood Meadows

1 S Locust Street, Inglewood, CA 90301



SOBRE LA PROPIEDAD

Inglewood Meadows es una propiedad de 199 unidades, Sección 8/Crédito Fiscal ubicada en la ciudad de Inglewood, CA para personas mayores de 62 años cabeza de familia.

Cada unidad de un dormitorio tiene alfombras de pared a pared, persianas, calefacción y aire acondicionado. Las cocinas están totalmente equipadas con estufa y refrigerador. La propiedad también cuenta con personal de administración y mantenimiento en el lugar. El gran patio al aire libre cuenta con zonas de barbacoa.

Los residentes pueden jugar al billar y al ping pong en el salón comunitario, así como participar en actividades grupales como bingo, baile en línea y celebraciones mensuales de cumpleaños. Inglewood Meadows brinda acceso conveniente al transporte público, instalaciones de salud, servicios comunitarios y un centro para personas mayores.

AMENIDADES DE LA PROPIEDAD

- Salón comunitario con cocina
- Gimnasio
- Lavandería
- Patio con barbacoa
- Laboratorio de computación

ALQUILER

Inglewood Meadows es una propiedad de 199 unidades, Sección 8/Crédito fiscal ubicada en la ciudad de Inglewood, CA, para personas mayores de 62 años. No se requiere un ingreso mínimo y los hogares pagarán aproximadamente el 30% de su ingreso mensual ajustado en alquiler como lo determino. **Sujeto a cambios**

Tamaño # de personas

1 HAB Min. 1 / Max. 2

LÍMITES DE INGRESOS

Los solicitantes deben tener ingresos inferiores al 60% del AMI del condado de Los Ángeles para el tamaño de su hogar. Vea el gráfico a continuación. **Sujeto a cambios.**

1 persona 2 personas

\$52,980 \$60,540

ESTACIONAMIENTO

El estacionamiento es limitado. Consulta con la administración para obtener más información.

Free interpretation services available. Please contact (310) 672-3988 or inglewoodmeadows@tsaproperties.com to make this request. TTY: (800) 855-7100. Hay servicios de interpretación gratuitos disponibles. Por favor llame a (310) 672-3988 o envíe un correo electrónico a inglewoodmeadows@tsaproperties.com para obtener ayuda. TTY: (800) 855-7100

Esta vivienda se ofrece sin distinción de raza, color, religión, sexo, género, identidad y expresión de género, estado familiar, origen nacional, estado de ciudadanía, estado de inmigrante, idioma principal, estado civil, ascendencia, edad, orientación sexual, discapacidad, fuente de ingresos (incluido el recibo de la Sección 8 y otros comprobantes similares), información genética, estado militar o de veterano, características arbitrarias o cualquier otra base actualmente o posteriormente prohibida por la ley.

Esta propiedad cuenta con unidades accesibles y adaptables para personas con discapacidad. Las personas con discapacidades pueden solicitar y recibir adaptaciones, modificaciones y ayudas auxiliares razonables, incluso en el proceso de solicitud. Comuníquese con inglewoodmeadows@tsaproperties.com para realizar esta solicitud.

Esta propiedad es una comunidad 100% para no fumadores.

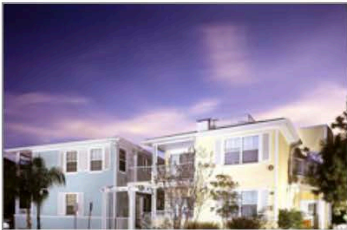


Thomas Safran & Associates

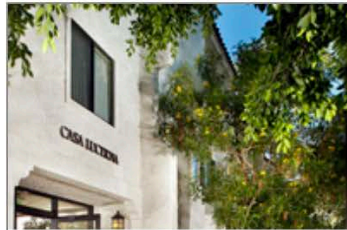
(310) 820-4888

Properties with Open Waiting Lists

Age Restricted



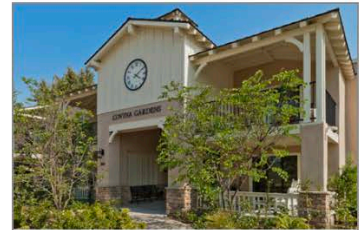
Beacon Hill
309 Beacon St
Avalon, CA
(310) 510-2471
Age Restricted: 62+



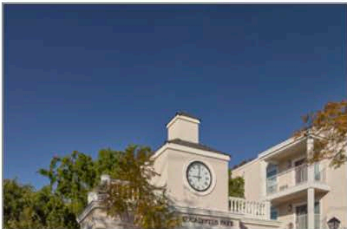
Casa Lucerna
1025 Kern Avenue
Los Angeles, CA
(323) 266-3313
Age Restricted: 55+



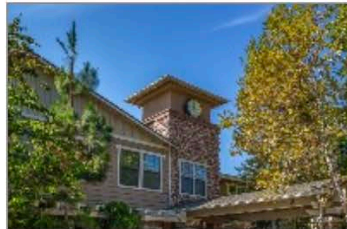
Corona Villas
2680 S. Main Street
Corona, CA
(951) 272-1868
Age Restricted: 62+



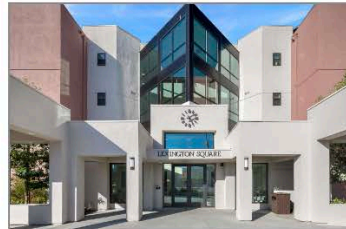
Covina Gardens
200 West Rowland Street
Covina, CA
(626) 967-4796
Age Restricted: 55+



Eucalyptus Park
811 N. Eucalyptus Avenue
Inglewood, CA
(310) 677-7482
Age Restricted: 62+



Goldware Senior Housing
6730 Streeter Avenue
Riverside, CA
(951) 351-1234
Age Restricted: 55+



Lexington Square
250 E Lexington Avenue
El Cajon, CA
(619) 444-2642
Age Restricted: 62+



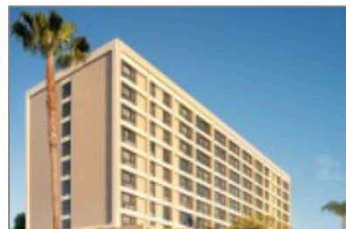
The Gateway
720 E. Carson Street
Carson, CA
(310) 522-4343
Age Restricted: 55+



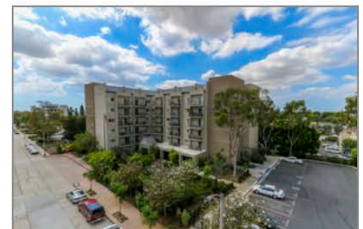
The Gateway at Willowbrook
11740 Bandera Street
Los Angeles, CA
(323) 566-2081
Age Restricted: 62+



Town Meadows
115 West Murray Avenue
Visalia, CA
(559) 627-2220
Age Restricted: 62+



Whittier Towers
7215 Bright Avenue
Whittier, CA
(562) 693-1353
Age Restricted: 62+



William Penn Manor
7025 Friends Avenue
Whittier, CA
(562) 945-1344
Age Restricted: 62+



“OF, BY, FOR
AND WITH THE
DEAF AND

HARD OF HEARING COMMUNITY”

mnau GLAD

Deaf Community Center Low Income Housing Independent Senior

14 EFFICIENCY APARTMENTS

- ◆ Low Rent
- ◆ Deaf Friendly
- ◆ Kitchen/Dinette
- ◆ Full Bathroom
- ◆ Laundry Facility
- ◆ Unfurnished
- ◆ Access to GLAD Services

ACCESS TO COMMUNITY SPACES

- ◆ Roof-top Solarium/Library
- ◆ Kitchen and Dining with reception area
- ◆ Gallery
- ◆ Auditorium
- ◆ Small lounge
- ◆ Park-like grounds
- ◆ Coffee bar
- ◆ VRSroom

GLAD accepts applications for its 14 Apartment units of low income housing for Deaf and Hard of Hearing Senior Citizens.

GLAD's Deaf Affordable Housing Corporation (DAHC), is an independent living facility. We are not an assisted living provider; our tenants are able to take care of themselves physically.

Complete and send your application today to place your name on the waiting list. **Spaces are limited and fill up fast!**

Qualifications: Deaf or Hard of Hearing, Age 55 and up; Qualifying Income of \$28,550 for one person or \$32,600 for two people. Good credit history.

Please submit 3 references. (Required)

g...c-----

For further information, please contact the Information and Referral Department

GLAD Headquarters:

2222 Laverna Avenue, Los Angeles, CA 90041

TTYNOICE 323-478-8000 - VP# 323-892-2225

*NAME: _____

*AGE: _____

*ADDRESS:-----

*PHONENP# _____

FAX: _____

*EMAIL: _____

WHEN WOULD YOU LIKE TO MOVE IN DIMMEDIATELY DAt a later date When?.....

*Date: -----

*Required

SENIOR HOUSING

	Address	Qty	Zip Code	Phone
Brookdale Alhambra	1 East Commonwealth Ave.	Alhambra	91801	626-551-0895
Plaza on Main	333 West Main Street	Alhambra	91801	626-289-5800
North Lake Villas	2851 N. Lake Ave.	Altadena	91001	626-398-8668
Heritage Park	150 West Las Tunas	Arcadia	91007	626-821-9048
Santa Anita Retirement Center	5600 Gracewood Ave.	Arcadia	91007	626-442-8410
Loving Care Home	735 E. Hanks St.	Arcadia	91702	626-969-2411
Soldano Senior Village	450 N Soldano Ave.	Azusa	91702	626-334-3383
Villa Azusa Senior	200 E Gladstone St.	Azusa	91702	626-969-2711
Kay's Guest House	3748 Grace Ave.	Baldwin Park	91706	626-962-8022
Ramona Park Apartments	13870 Ramona Blvd	Baldwin Park	91706	(626) 338-0224
The Oaks on Florence	4224 Florence Avenue	Bell	90201	(323)-560-1222
Westminster Court	6850 Florence Ave.	Bell Gardens	90201	562-806-2893
Park View Terrace	6728 Clara Street	Bell Gardens	90201	(562) 928-0348
Belmont Place Apartments	9830 Belmont St.	Bellflower	90706	562-804-1458
Camelot Residential Homes	10337 Beach St.	Bellflower	90706	562-866-3955
The Watermark at Beverly Hills	Hills 220 N. Clark Drive	Beverly Hills	90211	424-354-2614
Sunrise of Beverly Hills	201 N. Crescent Drive	Beverly Hills	90210	310-929-5343
Burbank Senior Artist Colony	240 East Verdugo Avenue	Burbank	91502	(818) 955-9391
Bellmont Village Senior Living	455 E Angeleno Ave	Burbank	91501	818-972-2405
Olive Plaza Apartments	450 E Olive Avenue	Burbank	91501	844-699-9121
Atria Las Posas	24 Las Posas Road	Camarillo	93010	805-351-3406
Brookdale Camarillo	6000 Santa Rosa Road	Camarillo	93012	844-348-2214
Golden Horizon	2221 Briarfield Street	Camarillo	93010	805-388-0308
Mira Vista Village	2700 East Ponderosa Drive	Camarillo	93010	805-987-6486
Ocean Breeze Estates	1132 Blue Oak Street	Camarillo	93010	562-595-7567
Ponderosa Village	2105 E. Ponderosa Drive	Camarillo	93010	805-312-3673
Vintage Crossing Senior Apartments	6830 Jordan Ave.	Canoga Park	91303	805-987-0260
Avalon Courtyard	22121 S. Avalon Blvd	Carson	90745	818-596-0921
Carson Retirement Center	Center 345 E Carson	Carson	90745	310-522-9858
Carson Terraces Senior Apts.	632 E. 219th Street	Carson	90745	310-830-4010
Villaggio	555 E. Carson St.	Carson	90745	310-835-0969
Carson Gardens Apts.	21811 S. Main St.	Carson	90745	310-847-7737
Bella Vita	402 E Sepulveda Blvd	Carson	90745	310-518-2790
The Gateway at City Center	720 E. Carson St.	Carson	90745	714-282-2520
Claremont Villas Senior Apts.	100 S. Indian Hill Blvd	Claremont	91711	310-522-4343
Commerce Senior Citizens Apts.	6725 E. Gage St.	Commerce	90040	909-625-2424
Telacu Manor	7100 E. Gage St.	Commerce		562-928-2922
E. Boyd Esters Manor	1101 N. Central Ave.	Compton	90222	562-927-7427
South Bay Retirement Residence	1001 W. Cressey Street	Compton	90222	323-838-8556
St. Timothy's Manor	425 S. Oleander Ave.	Compton	90222	310-603-2954
The Metro Compton Senior Apts.	302 N. Tamarind Ave.	Compton	90222	310-609-0110
Atria	825 W. San Bernardino Road	Covina	91722	323-979-0863
Covina Gardens	200 West Rowland Ave.	Covina	91723	310-635-4000
El Descanso Retirements Homes	21020 East Cienega Avenue	Covina	91724	626-407-2056
Culver City Senior Housing	5166 Sepulveda Blvd.	Culver City	90230	626-967-4796
Palms Court	3995 Overland Avenue	Culver City	90232	626-967-2868
Rotary Plaza	5100 Overland Avenue	Culver City	90230	310-390-2357
Avila Gardens	1171 Encanto Pkwy.	Duarte	91010	310-559-4999
Heritage Park	91S Highland Ave.	Duarte	91010	310-538-9160
Huntington Oaks Village	1657 Huntington Drive	Duarte	91010	626-599-2214
Royal Oaks	1763 Royal Oaks Dr. North	Duarte	91010	626-357-5118
Westminster Gardens	1420 Santo Domingo Ave.	Duarte	91010	855-300-8819
Blessed Rock Apartments	4111 Tyler Ave.	El Monte	91731	626-303-4552
Casa De Esperanza	12000 Denholm Dr	El Monte	91732	626-709-5843
Flamingo Gardens	3711 Cogswell Rd.	El Monte	91732	626-709-5845
Pacific Towers Senior	10450 E. Valley Blvd	El Monte	91731	(626) 448-2688
				(626) 444-8943
				(626) 443-3285
				(626) 279-1858

SENIOR HOUSING

	Address	Qty	Zip Code	Phone
Fillmore Senior Apartments	412 Santa Clara Ave.	Fliimore	90291	(805) 524-4124
Park View Senior Apartments	512 Main Street	Fliimore	93015	(805) 524-4700
Gardena Valley Towers Co-op	1715 W. 158th Street	Gardena	90247	310-217-1320
Broadview Residential Care	535 W. Broadway	Glendale	91204	818-246-4951
Parkview Glendale	426 Piedmont Ave.	Glendale	91206	818-246-7457
Leisure Vale Retirement	413 E. Cypress St.	Glendale	91205	818-244-2323
Windsor	1230 E. Windsor Road	Glendale	91205	747-800-4941
Glendora Gardens	340 N. Wabash Ave.	Glendora	91741	855-956-1586
Mauna Loa Oaks	19041 E. Mauna Loa Ave.	Glendora	91740	626-387-9186
Pilarville Gardens	1259 St. Vladimir St.	Glendora	91741	626-335-5136
St. James Homes	1042 Claraday St.	Glendora	91740	626-335-1995
Michael's Manor	23704 Hynford Pl. #237	Harbor City	90710	626-335-1995
Vista Lee Rosa Apts.	1001 Pacific Coast Hwy	Harbor City	90710	(310) 326-2733
Fonthill Care Gardens	14103 Fonthill Ave.	Hawthorne	90250	310-973-7242
Park Gale Guest Home	4760 W. 123rd St.	Hawthorne	90250	310-978-4676
Telacu Senior Housing	13000 Doty Ave.	Hawthorne	90250	310-675-8288
Belmont Village		Hollywood	90046	323-874-7711
				(323) 962-5811
Arirang Housing	1725 Whitley Ave.	Hollywood	90028	323-871-2116
Castle Argyle Apts.	1919 Argyle Ave.	Hollywood	90068	(323) 465-2082
Hayworth House	361 N Hayworth Ave.	Hollywood	90048	(323) 231-1104
Hollywood Fountain North	6233 Fountain Ave.	Hollywood	90028	(323) 461-9936
Hollywood Fountain South	6222 Fountain Ave.	Hollywood	90028	(323) 461-3758
Hollywood Knickerbocker	1714 N. Ivar Ave.	Hollywood	90028	323-870-9109
Hollywood Plaza Apts.	1637 N. Vine St.	Hollywood	90028	323-469-3211
Kingsley Manor	1055 N. Kingsley Drive	Hollywood	90029	323-661-1128
Melrose Garden	960 N. Martel Avenue	Hollywood	90046	323-928-4366
Casa Bonita Senior Apts.	6512 Rugby Avenue	Huntington Park	90025	323-553-2744
Eucalyptus Park	811 N. Eucalyptus Ave.	Inglewood	90302	310-677-7482
Regency Towers	151 N. Locust St.	Inglewood	90301	310-677-5400
Regent Plaza	201 West Regent St.	Inglewood	90301	310-672-5198
Westchester Villa	220 W. Manchester Blvd	Inglewood	90301	310-673-1093
Alondra Manor Home	15203 Alondra Blvd.	La Mirada	90638	714-228-1098
La Miranda Landmark	13710 Santa Tecla Ave.	La Mirada	90638	562-947-4087
La Miranda Vistas	14129 Adoree St.	La Mirada	90638	562-404-9975
The Palms	13001 La Miranda Blvd.	La Mirada	90638	844-455-7802
Breezewood Village	16000 East Grayville Drive	La Mirada	900638	562-943-9555
Canyon Terrace	2400 San Dimas Canyon Rd	La Verne	-	(909) 592-1255
Candlewood Park	4051 E. Candlewood St.	Lakewood	90712	(562) 531-3135
Arbor Court	44916 N. 10th Street West	Lancaster	93534	661-449-1660
Arbor Gardens	710 W. Kettering	Lancaster	93534	661-723-9015
Arbor Grove	855 W. Jackman Street	Lancaster	93534	661-949-6206
Cedar Creek Senior Apts.	1530 W. Avenue K8	Lancaster	93534	661-729-9998
Cedar Town Square Senior Apts.	44942 Cedar Ave.	Lancaster	93534	661-948-2571
Fernwood Apartments	45151 Fern Ave.	Lancaster	93534	661-948-0051
Lancaster Homes Apartments	711 W. Jackman St.	Lancaster	93534	(626) 262-4510
Max Keller Senior Apts.	44221 Kingtree Ave.	Lancaster	93534	661-940-8485
Mayflower Gardens	6570 W. Avenue L12	Lancaster	93536	661-943-3228
Prestige Assisted Living	43435 30th Street West	Lancaster	93536	661-949-2177
Tiana Rose Villa, LLC	45368 Tiana Rose Street	Lancaster	93536	661-945-2011
Lawndale Senior Housing	4702 W. 153rd Pl.	Lawndale	90260	(310) 644-1102
Lomita Care Center	1955 Lomita Blvd.	Lomita	90717	310-325-1970
Lomita Kiwanis Gardens	25109 Ebony Lane	Lomita	90717	310-325-5301
Covenant Manor	600 E. 4th Street	Long Beach	90802	562-435-1804
				562-444-1677
Del Amo Gardens	225. E. Del Amo Blvd.	Long Beach	90805	800-715-1250
Federation Towers	3801 W. Willow Street	Long Beach	90815	562-426-8404
Hacienda Grande	1740 Grand Ave.	Long Beach	90804	562-597-7753
				562-426-6547
Lone Beach Brethren Manor	3333 Pacific Place	Lone Beach	90806	562-595-7567

SENIOR HOUSING

	Address	Qty	Zip Code	Phone
Menorah Senior Housing		Long Beach	90806	310-477-1476 562-426-4004
Lutheran Towers	2340 4th St.	Long Beach	90405	562-435-3448
New Hope Home	1150 New York Street	Long Beach	90813	562-591-5681
Park Pacific Tower	714 Pacific Ave.	Long Beach	90806	562-435-1803 562-277-1597
Plymouth West 200	240 Chestnut Ave.	Long Beach	90802	562-432-7958 562-595-7567
Providence Gardens	1011 Pine Ave.	Long Beach	90813	562-432-4454
Scherer Park Apts.	4676 Long Beach Blvd.	Long Beach	90805	562-422-1798
Seamist Towers	1451 Atlantic Blvd.	Long Beach	90805	562-218-0580
St. Mary's Tower	1120 Atlantic Ave.	Long Beach	90813	562-435-0614
Villa Redondo	237 Redondo Ave.	Long Beach	90803	562-434-9932 877-227-3505
Vista del Mar	3360 Magnolia Ave.	Long Beach	90806	562-595-1559
Adams Senior Housing	1925 Adams Blvd.	Los Angeles	90018	323-766-9535 310-477-1476
Afton Place	6230-6231 Afton Place	Los Angeles	90028	(323) 467-4972
Alice Manor	10325 Grandee Ave.	Los Angeles	90059	323-567-6463
Athens Vistas Senior Apartments	1300 W. 105th St.	Los Angeles	90044	323-893-2401
Baldwin Villa Plaza	3939 Marilton Ave.	Los Angeles	-	(323) 298-0400
Broadway Villas Apartments	9501 5 Spring Street	Los Angeles	90037	323-418-1800
Broadwood Terrace Apartments	5005 S. Main St.	Los Angeles	90037	877-937-4743 323-235-5280
Carondelet Senior Apts.	512 S. Carondelet Street	Los Angeles	90057	213-487-7298 310-204-2050
Casa de las Hermanitas	2801 E. 2nd Street	Los Angeles	90033	323-262-1709
Casa De Woods	1951 W 22nd St.	Los Angeles	90230	866-940-8905
Casa Development	1151 S New Hampshire St.	Los Angeles	90230	877-920-3960 213-251-5987
Casa Longwood	2535 Longwood Ave	Los Angeles	90016	(323) 734-1477 323-292-0074
Casa Lucerna	1025 Kern Avenue	Los Angeles	90022	323-266-3313
Casa Serena Apartments	5017 Axtell Street	Los Angeles	90032	323-441-0656 626-859-3004
Cathay Manor	600 N. Broadway	Los Angeles	90012	213-626-1190
Castle Argyle Apartments	1919 N. Argyle Ave.	Los Angeles	90068	323-465-2082
Columbia Apartments	1043 Kingsley Drive	Los Angeles	90230	866-355-9435
Grand Plaza Senior Apts.	601 N. Grand Ave	Los Angeles	90012	213-680-9163
Dunbar Village	4225 South Central Ave.	Los Angeles	90011	323-238-7501
Echo Park Senior Housing	1727 Morton Avenue	Los Angeles	90026	310-475-6083 213-250-5310
Ellendale Arms	2711 Ellendale Pl.	Los Angeles	90007	(323) 3911021
Crescent Arms	1709 W. 8th Street	Los Angeles	90044	213-483-2767
E. Victor Villa	555 W. 92nd Street	Los Angeles	90044	323-757-1940
Fairfax Senior Citizens Apartments	737 S. Genesee Ave.	Los Angeles	90036	(323) 456-2500
Fairfax Towers	1200 N. Fairfax Ave.	Los Angeles	90046	323-650-1271 310-204-2050 800-299-2963
Fairmont Terrace	822 N. Hazard Ave.	Los Angeles	90063	(323) 268-8474
Fame Arms	2420 S Western Avenue	Los Angeles	90230	323-870-8745
Freeman Villa	1229 S. Westmoreland Ave.	Los Angeles	90006	(213) 383-7945
Fuller Avenue Housing	1627 N. Fuller Avenue	Los Angeles	90046	323-876-9634 310-477-1476 310-870-8745
Galaxy Apartments	835 West Rosecrans Avenue	Los Angeles	90247	310-538-9160
George McDonald Court Apts.	1800 E. 92nd Street	Los Angeles	90002	323-566-8608
Good Shepard Manor	4411 S. 11th Ave.	Los Angeles	90043	323-299-5735
Gramercy Place Apts	1819 S Gramercy Place	Los Angeles	90230	877-345-1705
Grand Plaza Senior Apartments	601 N Grand Ave.,	Los Angeles	90012	213-680-9163

SENIOR HOUSING

	Address	Qty	Zip Code	Phone
Hale Morris Lewis Apartments	1307 West 105th St.	Los Angeles	90044	323-755-1776
Hancock Gardens Apts	303 S. Van Ness Ave.	Los Angeles	90020	323-938-6646
Harvard Gardens	1938 S Harvard Blvd	Los Angeles	90230	877-282-5094
Hollywoodlands I	1438 Gordon Street	Los Angeles	90038	323-465-8957
Hollywoodlands II	5169 Marathon Street	Los Angeles	90038	323-465-8957
Hollywoodlands III	977 N Wilton Place	Los Angeles	90038	323-465-8957
Hoover Seniors	6206-6224 S. Hoover	Los Angeles	90044	323-541-0391
Jessie L. Terry Manor	3100 S. Vermont Ave.	Los Angeles	90007	323-734-1664
Jewel Terraces	1420 W 27th St.	Los Angeles	90230	866-333-6554
Kenwood Terrace	337 N. Mednick Ave.	Los Angeles	90022	323-263-9707
LA Pro XXXII Apartments	1348 W. Ingraham St.	Los Angeles	90017	(323) 213-4174
LA Posada	151 N Sunol Drive	Los Angeles	90063	323-266-8150
la Salle Fl Apartments	2011 la Salle Avenue	Los Angeles	90230	877-282-5094
Laguna Senior Apartments	4201 W. Sunset Blvd.	Los Angeles	90029	323-664-4300
Las Palmas	1778 N. Las Palmas Avenue	Los Angeles	90028	(213) 485-7535
Las Palomas Apartments	3025 Gleason Ave.	Los Angeles	90063	(626) 859-3004 323-780-4218
Los Angeles Gardens	2624 S Harvard Blvd.	Los Angeles	90230	877-644-2965
MacArthur Park Towers	450 Grand View Street	Los Angeles	90057	213-382-8395
Madison Ave. Senior Housing	1151 Madison Ave.	Los Angeles	90029	323-906-0249 310-477-1476
Main Street New Hope Courtyard	109 W. 56th St.	Los Angeles	90037	323-232-5483 213-483-2488
Manila Terrace	2328 W. Temple Street	Los Angeles	90026	800-545-1833 ext. 478
Manhattan Gardens	1424 S Manhattan Place	Los Angeles	90230	877-345-1705 213-787-2700
Mariposa Manor	756-757 S. Mariposa Ave.	Los Angeles	90005	213-385-0340 805-495-7999 ext. 427
Masselin Senior Housing	404 Cochran Ave	Los Angeles	-	(323) 549-0328
Menorah Terrace	1123 N. Fuller Ave.	Los Angeles	90046	310-477-1476 323-850-1225
Menlo Gardens	1816 Menlo Avenue	Los Angeles	90230	877-920-3960
Mid-Town Apartments	3030 San Marino Avenue	Los Angeles	90230	888-848-5723
Mid-Wilshire Apts.	2826 la Salle Avenue	Los Angeles	90230	866-940-8905 310-477-1476
Miracle Mile Senior Housing	404 S. Cochran Avenue	Los Angeles	90036	323-549-0328
Morgan Place Apartments	7301 S. Crenshaw Blvd.	Los Angeles	90043	323-905-1290
Mount Zion Towers	4827 S. Central Ave.	Los Angeles	90011	323-231-9361
Mt. Moriah Senior Villa	476 W. 43rd Street	Los Angeles	90037	323-231-9361 213-272-8936 310-204-2050
New Hampshire Arms	819 S. New Hampshire Ave.	Los Angeles	90005	213-389-9332
New Hope Senior Villa	5140 S. Central Ave.	Los Angeles	-	213-231-1104
Normandie Villas	2633 S Normandie Avenue	Los Angeles	90230	866-355-9435
One Venice	1 N Venice Blvd.	Los Angeles	90291	310-821-9332
Oxford Park	1920 S. Oxford Street	Los Angeles	90018	323-731-7661
Parkview on the Park Apartments	626 South Alvarado St.,	Los Angeles	90057	213-989-0750
Pico Union Villa	1200 S. Union Ave.	Los Angeles	90015	213-738-7827
Pico-Veteran Senior Housing	10961 W. Pico Blvd.	Los Angeles	90064	310-477-1476 310-312-6096
Pico Wooster Senior Citizens	1425 S. Wooster Street	Los Angeles	90035	310-477-1476 310-271-5934
Progressive Home	7010 S. Denver Ave.	Los Angeles	90044	323-753-3427
Pilgrim Tower	1207 S Vermont Avenue	Los Angeles	90230	877-345-1711
Rittenhouse Square	1100 E. 33rd Street	Los Angeles	90011	323-432-0890
San Lucas	1221 West 7th Street	Los Angeles	90017	213-623-2010
Sharp Manor	10601 South Broadway	Los Angeles	90003	323-779-3004
St. Andrews Terrace	1525 S. St. Andrews Place	Los Angeles	90230	877-644-2965
St. James Manor	615 S. Gramercy Place	Los Angeles	90005	213-382-5391

SENIOR HOUSING

	Address	Qty	Zip Code	Phone
St. Nicholas Cedars Manor	2323 W. 4th Street	Los Angeles	90057	213-388-8083
Stevenson Manor	1230 Cole Ave.	Los Angeles	90038	(818) 789-5550
Stovall Terrace Apartments	4075 S. Figueroa Street	Los Angeles	90037	323-235-6250
Sunset-Normandie Towers	1428 N. Normandie Ave	Los Angeles	90027	323-663-0423
Swansea Park Apartments	1015 N. Kingsley Drive	Los Angeles	90029	323-666-4313
Van Nuys Apartments	210 W. 7th Street	Los Angeles	90014	213-627-5286
Van Buren Apartmeents	2723 Van Buren Pl	Los Angeles	90230	877-920-3960
Vendome Courts	135 S. Reno Street	Los Angeles	90057	323-231-4174
Villa de la Esperanza	1401 S. Hope Street	Los Angeles	90015	213-749-4327
Villa St. Andrews	1840 S St. Andrews	Los Angeles	90230	877-345-1711
Wadsworth Place	911 E. 120th Street	Los Angeles	90059	323-567-2345
Watts Arms I	1720 E. Century Blvd.	Los Angeles	90002	323-569-2809
Ward Villas	1177 W Adams Blvd	Los Angeles	90007	213-747-1188
Wills Manor	1510 W. 27th Street	Los Angeles	90230	866-940-8905
Willowbrook Villa	4341 Willowbrook Ave.	Los Angeles	90029	323-521-5812
Wilshire Towers	616 S. Normandie Ave	Los Angeles	90005	213-381-6439
Wilton Wilshire Arms	3966 Wilshire Blvd	Los Angeles	90010	213-487-7269
Preservation V	833 S. Carondelet St.	Los Angeles	90057	(310) 374-4381
Silvercrest	5940 Carlos Ave.	Los Angeles	90028	(562) 491-8767
Tres Lomas Gardens	4343-49 Toland Way	Los Angeles	90041	323-255-4947
Villa Marisol	5301 Via Marisol	Los Angeles	90042	626-745-2826
Redwood Village	13150 Maxella Avenue	Marina Del Rey	90292	(310) 306-6488
Maywood Manor Cooperative	4650 Slauson Ave.	Maywood	90270	(323) 773-5175
Wilson Apartments	105 E. Olive Ave.	Monrovia	91016	626-348-0022
Montebello Downtown Plaza	815 West Cleveland Ave.	Montebello	90640	323-888-9759
Montebello Senior Villas	205 West Whittier Blvd	Montebello	90640	323-724-6888
Via Campo Senior Villas	2201 Via Campo	Montebello	90640	323-888-1194
Golden Age Village	234 N. Rural Drive	Monterey Park	91755	626-571-1807
Monterey Park Senior Village	1935 Potrero Grande Drive	Monterey Park	91755	626-573-1684
Vintage Crest Senior Apartments	4700 Park Ln.	Moorpark	93021	(805) 531-1057
Columbus Square	8561 Columbus Ave.	North Hills	91343	(310) 802-6670
Plummer Village	15450 Plummer St.	North Hills	91343	(818) 891-0646
St. Nicholas Housing Development	10220 Aqueduct Ave	North Hills	91343	(818) 894-0084
Golden Years Senior Housing	11330 Otsego St.	North Hollywood	91601	818-762-6001
North Hollywood Senior Citizens Housing	11035 Magnolia Blvd.	North Hollywood	91601	800-500-7725
Northridge Park Manor	9628 Reseda Blvd.	North Hollywood	91324	(818) 993-9236
Plummer Park Apartments	17051 Plummer St.	North Hollywood	91325	(818) 701-9554
				310-477-1476
Parthenia St. Senior Housing	19455 Parthenia Street	North Hollywood	91324	818-700-8073
Norwalk Christian Towers	14141 Clarkdale Ave.	Norwalk	90650	(562) 868-6241
Camino Del Sol Apartments	1910 Camino Del Sol	Oxnard	93030	805-278-7744
Casa Merced	840 W. 5th Street	Oxnard	93030	805-483-7122
Press Courier Senior Lofts	300 W. 9th St.	Oxnard	93030	805-754-2805
Heritage Park Apartments	820 South E. St.	Oxnard	93030	805-483-7322
Sycamore Senior Village	333 NF St.	Oxnard	93030	844-543-0983
Casa Merced Apartments	840 W. 5th St.	Oxnard	93030	805-483-7122
Pledgreville Senior Citizens Villa	11060 Norris Ave.	Pacoima	91331	(818) 897-7784
				661-272-4576; 661-947-4705
Cielo Azul Apartments or Impressions Apartrr	38040 27th Street E	Palmdale	93550	
Palmdale Gardens Apartments	3860110th St. E	Palmdale	93550	(661) 273-1874
Palo Verde Terrace	38235 10th Street E	Palmdale	93550	661-274-9726
Rancho Village	39630 Fairway Drive	Palmdale	93551	844-500-0671
Whispering Palms	38250 9th Street East	Palmdale	93551	661-267-0752
Ridgeview Manor Apartments	14620 Gledhill St.	Panorama City	91402	818-893-0622
Community Arms	169 E. Orange Grove Blvd	Pasadena	91103	626-796-8196
The Concord	275 E. Cordova Street	Pasadena	91101	626-792-1032
				626-388-1505
Heritage Square	762 N. Fair Oaks Ave.	Pasadena	91103	213-787-2748
la Pintesca	1275 la Pintesca Dr.	Pasadena	91103	626-797-1794
Green Hotel Apartments	50 East Green Street	Pasadena	91101	626-793-7070

SENIOR HOUSING

	Address	Qty	Zip Code	Phone
Rosewood Court	1800 N. Fair Oaks Ave.	Pasadena	91103	626-398-6470
Oaks of Pasadena	2954 E. Del Mar Blvd.	Pasadena	91107	626-356-2600
Pasadena Highlands	1575 E. Washington Blvd.	Pasadena	91104	626-768-7764
Pilgrim Tower North	560 E. Villa Street	Pasadena	91101	626-577-0330
Pico Rivera Gardens	6525 Rosemead Blvd.	Pico Rivera	90660	562-949-8489
Verner Villa	9220 Verner Street	Pico Rivera	90660	562-948-1852
				310-949-9222
The Woods at Playa Vista	12481 W. Fielding Circle	Playa Vista	90049	424-835-4135
Emerson Village	755 Palomares	Pomona	91766	909-623-1421
Serenity Villas	158 E. Bonita Ave.	Pomona	91767	909-596-2900
Casa Pacifica	703 N. Ventura Roa	Port Hueneme	93041	805-986-2100
Casa de las Amigos	123 S. Catalina Ave.	Redondo Beach	90277	310-376-3457
Heritage Pointe	1801 Aviation Way	Redondo Beach	90278	310-318-8418
Seaside Villa	319 N. Broadway	Redondo Beach	90277	310-376-9363
				310-477-1476
Menorah Home	19206 Sherman Way	Reseda	91335	818-708-0407
Reseda East	18450 Ingamar St.	Reseda	91335	(818) 342-7176
Reseda Manor	7725 Reseda Blvd	Reseda	91335	818-342-7191
California Mission Inn	4825 Earle Ave	Rosemead	91770	(626) 287-0438
Atria Rancho Park	801 Cypress Way	San Dimas	91773	626-275-4376
San Dimas Retirement	834 W. Arrow Highway	San Dimas	91773	909-599-8441
Sunnyside Senior Apartments	251 S. Walnut Ave.	San Dimas	91773	909-599-2121
Monte Vista Place	105 N. Monte Vista Ave.	San Dimas	91773	909-599-2939
Park San Dimas	265 W. Foothill Blvd.	San Dimas	91773	909-394-0333
Charter Oak Mobile Home Estates	801 W. Covina Blvd.	San Dimas	91773	909-599-2939
Cienega Valley Estates	1245 W. Cienega Ave.	San Dimas	91773	909-599-4518
Lone Hill Manor	1205 W. Cypress Ave.	San Dimas	91773	909-592-3831
Mobileland	1635 W. Covina Blvd.	San Dimas	91773	626-331-5456
San Dimas Royal	1630 W. Covina Blvd.	San Dimas	91773	626-332-2407
Casa Bonita Convalescent	535 E. Bonita Ave.	San Dimas	91773	909-599-1248
Canterbury Village	23420 Avenida Rotella	Santa Clarita - Valencia	91355	(661) 255-9797
Silvercreek	12015 Lakelands Rd.	Santa Fe Springs	90670	(562) 946-7717
Costa Azul	10829 Fulton Wells Ave.	Santa Fe Springs	90670	(562) 944-4999
Barnard Park Villas	3356 Barnard Way	Santa Monica	90405	310-399-7023
Brookdale Santa Monica	2107 Ocean Ave.	Santa Monica	90405	310-573-8697
				310-477-1476
Fourth Street Senior Housing	1116-1146 4th Street	Santa Monica	90403	310-917-5004
Brookdale Santa Monica Gardens	851 2nd Street	Santa Monica	90403	844-880-3432
Lincoln Court Apts.	2807 Lincoln Blvd.	Santa Monica	90405	310-314-8269
Ocean Breeze	1458 14th Street	Santa Monica	90404	424-268-4176
Santa Monica Christian Towers	1233 6th Street	Santa Monica	90403	310-394-3017
Upward Bound Senior Villas	101111th Street	Santa Monica	90403	310-458-7779
Westminster Towers	1112 7th St.	Santa Monica	90403	323-258-3512
Wilshire House	1125 3rd St.	Santa Monica	90401	(310) 395-4545
Columbus Terrace Apartments	8606 Columbus Ave	Santa Monica	91343	(818) 893-8387
Dickens Senior Apartments	14559 Dickens St.	Sherman Oaks	91403	(818) 986-9515
Nobile Senior Housing	15100 Moorpark	Sherman Oaks	91403	310-477-1476
Sherman Oaks Senior Housing	14567 Dickens Street	Sherman Oaks	91403	310-477-1476
Sherman Arms Apartments	17760 Sherman Way	Sherman Way	91335	818-946-0471
Villa Valley Apartments	15950 Sherman Way	Sherman Ways	91406	(818) 781-7285
VPH Adult Retirement Center	15211 Sherman Way	Sherman Ways	91405	(818) 781-7285
				310-477-1476
Sherman Way Senior Housing	15864 Sherman Way	Sherman Ways	91406	818-785-9765
West Valley Towers	14650 Sherman Way	Sherman Ways	91406	(818) 994-0965
Woodman Manor Apartments	6712 Woodman Ave.	Sherman Ways	91401	(310) 377-7789
		Sherman Ways - Van Nuys		
Fickett Towers	14081 Sherman Way	Nuys	91405	(818) 988-8628
Harmony Terrace	941 Sunset Garden Ln.	Simi Valley	93065	(805) 522-7766
Heywood Gardens	1770 Heywood St.	Simi Valley	93065	(805) 583-8464
Las Serenas	2090 Yosemite Ave.	Simi Valley	93063	(805) 520-9542

SENIOR HOUSING

	Address	Qty	Zip Code	Phone
Seasons	1662 Rory Ln.	Simi Valley	93063	(805) 522-7778
Patricia Village	1561 Patricia Ave.	Simi Valley	93065	(805) 583-3639
Sorrento Villas	415 Country Club Dr.	Simi Valley	93065	(805) 527-7838
Vintage Paseo	2970 Tapo Canyon Rd.	Simi Valley	93063	(805) 578-2311
Westgate	1850 Williams St. #100	Simi Valley	93065	(805) 526-9302
Pennsylvania Square	3170 Southern Ave.	South Gate	90280	323-566-5082
Burns Manor	8155 Foothill Blvd.	Sunland	91040	(818) 352-8715
Silvercrest	11840 Foothill Blvd.	Sylmar	91342	(562) 491-8767
Valley Pride Village	13200 Bromont Ave.	Sylmar	91342	818-362-2616
Atria Thousand Oaks	405 Hodencamp Road	Thousand Oaks	91360	805-273-5042
Conejo Future Apartments	130 Brazil St.	Thousand Oaks	91360	(310) 203-9199
Glenn Oaks Senior Apartments	145 E Wilbur Rd.	Thousand Oaks	91360	(805) 494-3120
Oak Creek Senior Village	367 E Thousand Oaks Blvd	Thousand Oaks	91360	805-273-5042
Ocean Terrace	3851 226th Street	Torrance	90505	310-373-0903
Coleman Court	1421 Cravens Avenue	Torrance	90501	310-212-5898
Golden West Tower	3510 W. Maricopa Street	Torrance	90503	310-371-4801
JCI Gardens	2000 W. 162nd Street	Torrance	90504	310-515-3642
Ocean Terrace	3851 226th Street	Torrance	90505	310-373-0903
Foothill Gardens	7687 Foothill Blvd.	Tujunga	91042	(818) 352-1307
Tujunga Gardens	6643 Foothill Blvd.	Tujunga	91042	(818) 352-1307
Valencia Villa Apartments	25857 Singing Hills Dr.	Valencia	91355	(310) 204-2050
Sherman Way Senior Housing	15864 Sherman Way	Van Nuys	91406	(818) 785-9765
Adda & Paul Safran Senior Housing	151 Ocean Front Walk	Venice	90291	(310) 450-9545
One Venice	One N Venice Blvd.	Venice	90291	(310) 821-9332
Cypress Place Senior Living	1220 Cypress Point Lane	Ventura	93003	
Silvercrest Ventura	750 Petit Ave.	Ventura	93004	805-647-0110
Lark Ellen Village	1350 E. San Bernardino Road	West Covina	91790	626-732-3939
Olive Tree Terrace	721 N Azusa Ave.	West Covina	91791	626-967-1656
Vintage Gardens	1950 E. Badillo Street	West Covina	91791	626-967-5631
Heritage Park Senior Apartments	1800 W. Badillo Street	West Covina	91790	626-813-0233
West Covina Senior Villas	1842 Workman Avenue	West Covina	91791	626-331-0208
West Covina Senior Villas II	1838 Workman Ave.	West Covina	91791	626-331-7100
Movietown Square	7302 Santa Monica Blvd.	West Hollywood	90046	323-356-3330
Affordable Living for the Agin	937 N. Fairfax Avenue	West Hollywood	90046	323-650-7988
Kings Road Apartments	800 Kings Road	West Hollywood	90069	323-653-3090
				310-850-1225
Menorah Terrace	1123 N. Fuller Ave.	West Hollywood	90046	310-477-1476
Brookdale Central Whittier	8101 Painter Ave.	Whittier	90602	844-662-0993
Emeritus at Chateau Whittier	13250 E. Philadelphia Street	Whittier	90601	844-344-4049
Leffingwell Manor	11410 Santa Gertrudes Ave.	Whittier	90604	562-947-1334
Whittier Lutheran Towers	7215 Bright Ave.	Whittier	90602	562-693-1353
Whittier Place Senior Living	12315 Burgess Avenue	Whittier	90604	562-777-1477
William Penn Manor	7025 Friends	Whittier	90602	562-945-1344
Hoover Hotel	7035 Greenleaf	Whittier	90602	562-696-1848
Whispering Fountains	12251 Washington	Whittier	90606	562-698-6576
Lazy Spokes Trailer Park	109311st. Ave	Whittier	90603	562-947-1314
Don Senior Apartments	105 East I Street	Wilmington	90744	310-549-3338
Wilmington Gardens	1311 W. Anaheim Street	Wilmington	90744	310-835-6366
Owensmouth Gardens	6300 Owensmouth Ave.	Woodland Hills	91367	(818) 715-1750
TELACU	refer to pdf			

RESOURCE: Helping Hands Senior Foundation 818-269-6580 can help place seniors in affordable housing as well as connect seniors to community resources.

LIVING OPTIONS GUIDE:

Independent Living: \$550- 1,300 per month for shared room; \$1,000-2,300 per month for private room. Typical placement takes 2-4 weeks.

Assisted Living: SSI rate and up for shared room; \$1,800-2,500 per month for private room. Typical placement takes 2-4 weeks.

Skilled Nursing Facility: Placement covered by insurance and social security with no out of pocket cost per month. Shared room only. Placement within 1-4 weeks.

VETERAN HOUSING

Property	Address	City	Zip Code	Phone	
Plaza on Main	333 West Main Street	Alhambra	91801	626-289-5800	Senior Veterans Only
Altadena Vista Senior Apartments	815 E. Calaveras St.	Altadena	91001	323-564-0237	Senior Veterans Only
Villa Azusa Senior Apartments	200 E. Gladstone St.	Azusa	91702	626-969-2711	Senior Veterans Only
Soldano Senior Village	450 N Soldano Ave.	Azusa	91702	626-334-3383	Senior Veterans Only
Coco Capri Apartments	4001 Coco Ave.	Baldwin Hills	90008	310-450-8785	Veteran
The Oaks on Florence	4224 Florence Avenue	Bell	90201	(323)-560-1222	Senior Veterans Only
Terra Bella	5720 Clara St.	Bell Gardens	90201	562-927-3900	Senior Veterans Only
Park View Terrace	6728 Clara St.	Bell Gardens	90201	562-928-0348	Senior Veterans Only
Artesia Blvd. Apartments	8808 Artesia Blvd.	Bellflower	90706	562-637-6191	Veteran
Canyon Creek	4803 B Canon Ave.	Bellflower	91302	310-820-4888 8182258298	Senior Veterans Only
Bellflower Terrace Senior Apartments	16322 Bellflower Blvd.	Bellflower	90706	(562) 866-8866	Senior Veterans Only
Saticoy Street Apartments	21618 Saticoy St.	Canoga Park	91303-91304	818-887-6920	Veteran
Hart Village Apartments	6941 Owensmouth Ave.	Canoga Park	91303-91304	818-704-5983	Veteran
Tierra del Sol Apartments	7500 Alabama Ave.	Canoga Park	91303-91304	818-887-6920	Veteran
Vintage Crossing Senior Apartments	6830 Jordan Ave.	Canoga Park	91303	818-596-0921	Senior Veterans Only
Las Casitas	21513 Valerio St.	Canoga Park	91303-91304	818-887-6920	Senior Veterans Only
Camino Village Senior Apartments	21735 S. Main St.	Carson	90745	310-835-1899	Senior Veterans Only
Castaic Lake Senior Village	31990 Castaic Rd.	Castaic	91384	661-295-9599	Senior Veterans Only
My Serenity Villa	20615 Mayall St.	Chatsworth	91311	323-327-8554	Veteran
Claremont Villas Senior Apartments	100 S. Indian Hill Blvd.	Claremont	91711	909-625-2424	Senior Veterans Only
Clela Apartments	1243 S. Clela Avenue	Commerce	90022	323-503-9534	Veteran
Douglas Park Apartments	1108 N. Culver Ave.	Compton	90220-90222	310-603-1944	Veteran
Santa Fe Apartments	1912 N. Santa Fe Ave.	Compton	90220-90222	323-231-1107	Veteran
Mosaic Gardens at Willowbrook	2213 E. B Segundo Blvd.	Compton	90220-90222	213-787-2701	Veteran
	12612 S. Wilmington Ave.	Compton	90220-90222	310-635-1557	Veteran
Jones Properties	219 E. Alondra Blvd.	Compton	90220-90222	310-962-0599	Senior Veterans Only 55+
The Metro@ Compton Senior Apartments	302 N. Tamarind Ave.	Compton	90220-90222	424-345-2106	Senior Veterans Only
Ramona Estates	1935 E. 122nd St.	Compton	90220-90222	310-604-0392	Senior Veterans Only
Covina Gardens	200 W. Rowland St.	Covina	91723	626-967-4768	Senior Veterans Only
Elizabeth Court	5225 Elizabeth Pl.	Cudahy	90201	323-562-2708	Veteran
Clara Park Commons for Seniors	4805 Clara St.	Cudahy	902021	323-560-7628	Veteran
Sunshine Apartments	8780 Stamps Rd.	Downey	90241	562-343-5961	Veteran
Adco Apartments	11528 Adco Ave.	Downey	90241	562-595-6111	Veteran
Terrace Regency	11410 Dolan Ave.	Downey	90241	714-717-3357	Senior Veterans Only
Heritage Park Senior Apartments	915 Highland Ave.	Duarte	91010	626-357-5118	Senior Veterans Only
Rockview Apartments	1139 Colorado Blvd.	Eagle Rock	90041	323-258-5320	Senior Veterans Only
B Monte Veterans Village Apartments - OPENN WAIT LIST	11240 Ramona Blvd.	B Monte	91731-91733	626-377-9901	Veterans with Discharge Status of Honorable or Other- than-Honorable and eligible to receive VA Health Benefits; Chronically Homeless; Referrals only
Baldwin Rose Veterans Apartments - OPEN WAIT LIST	9953 Rose Ave.	B Monte	91731-91733	(626) 600-4206	Veterans; Families with Veteran as Head of Household
Tyler Court Senior Apartments	3348 Tyler Ave.	B Monte	91731-91733	626-444-4960	Senior Veterans Only
Palo Verde Apartments	4704 Peck Rd.	B Monte	91731-91733	888-227-8501	Senior Veterans Only
Balboa Grande Apartments	10620 Balboa Blvd.	Granada Hills	91344	818-831-1432	Veteran
Glenmary	4733 N. Figueroa St.	Highland Park	90042	323-258-5320	Senior Veterans Only
Chateau Carlton Apartments	6040 Carlton Way	Hollywood	90028	310-556-1543	Veteran
Met West	5837 W. Sunset Blvd.	Hollywood	90028	323-295-2000 Ext. 16110	Veteran
Selma Community Housing	1605 N. Cherokee Ave.	Hollywood	90028	323-499-1727	Veteran
Eastown Apartments	6201 Hollywood Blvd.	Hollywood	90028	323-960-2500	Veteran
Kenmore Apartments	1726 N. Kenmore Ave.	Hollywood	90028	323-664-4986	Veteran
Mosaic Gardens at Huntington Park	6337 Middleton St.	Huntington Park	90255	323-588-1832	Veteran
Casa Bonita Senior Apartments	6512 Rugby Ave.	Huntington Park	90255	323-581-1600	Senior Veterans Only
Seville Gardens Apartments	2701 Randolph St.	Huntington Park	90255	310-533-5000	Senior Veterans Only
Westside Residences for Veterans	725 S. Hindry Ave	Inglewood	90301-90305	310-496-8132	Veteran
Sunny Gardens Seniors Apartments	13712 E. Sunkist Dr.	La Puente	91744-91746	626-960-1219	Senior Veterans Only
La Puente Gardens Senior Apartments	17341 Hurley St.	La Puente	91744-91746	626-964-6040	Senior Veterans Only
Lake Balboa	6525 Woodley Ave.	Lake Balboa	91406	310-466-0131	Veteran
Amanda Regency Apartments	6805 Louise Ave.	Lake Balboa	91406	818-345-8800	Veteran
Lakeview Terrace Silvercrest	11850 Foothill Blvd.	Lake View Terrace	91342	818-896-7580	Senior Veterans/ Hearing accessible unit - waitlist open
Seasons I Senior Apartments	21309 Bloomfield Ave.	Lakewood	90715	562-809-3456	Senior Veterans Only
Kensington Campus I	45244 32nd St. W.	Lancaster	93534	323-334-9000	Veteran
Arbor Fields Apartments	530 W. Jackman St.	Lancaster	93534	661-942-0026	Veteran
Ima2ine Villa2e	43517 Sahuayo St.	Lancaster	93534	213-225-2728	Veteran

VETERAN HOUSING

Property	Address	City	Zip Code	Phone	
Cedar Ridge	2105 E. Avenue	Lancaster	93534	661-723-7538	Veteran
Arbor Court	44916 N. 10th St. W.	Lancaster	93534	661-449-1660	Senior Veterans Only
Arbor Grove Senior Apartments	855 W. Jackman St.	Lancaster	93534	661-949-6206	Senior Veterans Only
Arbor Gardens	710 W. Kettering St.	Lancaster	93534	661-723-9015	Senior Veterans Only
Aurora Village II Senior Community	43945 12th St. W.	Lancaster	93534	661-948-0860	Senior Veterans Only
Belmont Shores	5465 E. 2nd. St.	Long Beach	90803-90813	310-872-8686	Veteran
Cabrillo Plaza (Casa de Cabrillo)	2001 River Ave.	Long Beach	90803-90813	562-388-8107	Veteran
City View	3333 Pacific Pl.	Long Beach	90803-90813	562-426-6547	Senior Veterans Only
Elm Terrace Apartments	1100 Elm Ave.	Long Beach	90803-90813	562-491-0088	Senior Veterans Only
The Cleo Apartments	345 S. Alexandria Ave.	Los Angeles	90012-91303	213-389-1050	Veteran
Hillside Villa Apartments	636 N. Hill Pl.	Los Angeles	90012-91303	213-952-9999	Veteran
LA Plaza Village	555 N. Spring St.	Los Angeles	90012-91303	213-810-1198	Veteran
Cochran City Lights	1315 S. Cochran Ave.	Los Angeles	90012-91303	323-936-6497	Veteran
Silver Star Apartments	6570 West Blvd.	Los Angeles	90012-91303	213-817-7357	Veteran
Alessio Apartments	5700 W. Centinela Ave	Los Angeles	90012-91303	833-569-2528	Veteran
Lofts at Noho Commons	11136 Chandler Blvd.	Los Angeles	90012-91303	818-827-3100	Veteran
Florence Morehouse Apartments	11750 W. Martin Luther King Jr. B	Los Angeles	90012-91303	323-531-2667	Veteran
DTLA California Castle	1980 Estrella Ave.	Los Angeles	90012-91303	323-472-1197	Shared room
Minnie's Shell	1341 W. 53rd St.	Los Angeles	90012-91303	310-704-8705	Shared housing for single women / Shared bedroom/ 2 beds per room
Gower Street Apartments	1140 N. Gower St.	Los Angeles	90012-91303	323-467-3449	Homeless Veteran/ Special needs housing
Wilson Apartments	105 E. Olive Ave.	Monrovia	91016	626-398-0022	Senior Veterans Only
Pacific Housing Development	322 E. Newmark Ave.	Monterey Park	91755	323-838-8556	Veteran
Orion Gardens	8955 N. Orion Ave.	North Hills	91343	818-892-2481	Veteran
Casa Familiar de Nordhoff	15543 Nordhoff St.	North Hills	91343	818-892-6220	Veteran
Colony Cove IV HOA	8505 Columbus Ave.	North Hills	91343	805-587-1572	Veteran
Apple Tree Village Apartments	9229 N. Sepulveda Blvd.	North Hills	91343	818-920-9960	Veteran
Valley View Apartments	9015 Orion Ave.	North Hills	91343	818-894-5771	Veteran
Columbus Square Apartments	8561 Columbus Ave.	North Hills	91343	818-891-9898	Veteran
Huston Court	11120 Huston St.	North Hollywood	91601-91606	818-350-1600	Veteran
Laurel Courtyard	7651 Laurel Canyon Ave.	North Hollywood	91601-91606	818-901-6019	Veteran
The Ivy at NOHO	11011 Otsego St.	North Hollywood	91601-91606	818-860-4111	Veteran
Aura NoHo	11430 Burbank Blvd.	North Hollywood	91601-91606	818-350-1600 Ext. 605	Veteran
nVe NoHo	11405 Chandler Blvd.	North Hollywood	91601-91606	818-505-8070	Veteran
Living at Noho	11049 W. McCormick	North Hollywood	91601-91606	818-508-6565	Veteran
Denny Place Apartments	5620 Denny Ave.	North Hollywood	91601-91606	818-985-8768	Veteran
Willow Wood Apartments	5104 Denny Ave.	North Hollywood	91601-91606	818-985-8768	Veteran
BlixVillas	10900 Blix St.	North Hollywood	91601-91606	213-407-3772	Veteran
Pravada East	7526 Simpson Ave.	North Hollywood	91601-91606	909-278-0475	Veteran
Coldwater Apartments	6333 Coldwater Canyon	North Hollywood	91601-91606	818-985-5274	Veteran
Hamlin Estates Apartments	11735 Hamlin St.	North Hollywood	91601-91606	818-985-8768	Veteran
Simpson Saticoy Apartments	7541 Simpson Ave.	North Hollywood	91601-91606	818-765-3182	Senior Veterans Only
Sophia Ridge Apartments	9016 Reseda Blvd.	North ridge	91324	818-773-9444	Veteran
Moonlight Villas	12381 Osborne St.	Pacoima	91331		Veteran
Osborne Gardens Apartments	12360 Osborne St.	Pacoima	91331	818-899-0755	Veteran
Palmdale Garden Apartments	3860110th St. E	Palmdale	93550	661-273-1874	Senior Veterans Only
Asturias Senior Apartments	9628 Van Nuys Blvd.	Panorama City	91402	818-830-5100	Senior Veterans Only
Cantabria Senior Apartments	9640 Van Nuys Blvd.	Panorama City	91402	818-891-7200	Senior Veterans Only
Regency 50 Apartments	14540 Blythe St.	Panorama City	91402	818-988-9515	Senior Veterans Only
Parthenia II Apartments	14920 Parthenia St.	Panorama City	91402	818-891-8813	Senior Veterans Only
Town Center Terrace	16200 Vermont Ave.	Paramount	90723	562-408-0801	Senior Veterans Only
Cordova Park Villa	330 Cordova St.	Pasadena	91101-91103	608-385-8563	Veteran
Rosewood Court	1888 N. Fair Oaks Ave.	Pasadena	91101-91103	626-398-6470	Senior Veterans Only
Centennial Place	235 E. Holly St.	Pasadena	91101-91103	626-585-0009	Must apply through Union Station Homeless Services
Fountain Park Apartments	13141 Fountain Park Dr.	Playa Vista	90094	310-437-6160	Veteran
Crescent Park	5710 Crescent Park E.	Playa Vista	90094	310-347-6050	Veteran
Baird Apartments	7820 Baird Ave.	Reseda	91335	818-345-1193	Veteran
San Pedro New Hope Courtyard	1124 S. Palos Verdes St.	San Pedro	90721	310-831-6851	Veteran
Pacific Avenue Arts Colony	303 S. Pacific Ave.	San Pedro	90721	310-221-0019	Veteran
Toberman Village	142 W. Santa Cruz St.	San Pedro	90721	310-519-0774	Veteran
California Hotel	1140 S. Pacific Ave.	San Pedro	90721	310-514-0172	Veteran
Santa Cruz Terrace	201 N. Beacon St.	San Pedro	90721	310-519-0774	Veteran
Santa Monica New Hope Apartments	1637 Appian Way	Santa Monica	90401	310-395-1026	Veteran
Sherman Oaks Place	5100 Woodman Ave.	Sherman Oaks	91423	818-923-0555	Veteran
Sierra Vista Senior Apartments	70 Esperanza Ave.	Sierra Madre	91024	818-763-0810	Senior Veterans Only
Holly Dale Senior Apartments	12222 Garfield Ave.	South Gate	90280	562-529-5900	Senior Veterans Only
Villa Del Sol	11971 Alleigheny St.	Sun Valley	91352	818-768-1719	Veteran

VETERAN HOUSING

<u>Property</u>	<u>Address</u>	<u>City</u>	<u>Zip Code</u>	<u>Phone</u>	
Strathern Park East Apartments	11047 Strathern St.	Sun Valley	91352	818-768-4424	Veteran
Burns Manor Apartments	8155 Foothill Blvd.	Sunland	91040	818-352-8715	Senior Veterans Only
Cosmo Residential	12455 San Fernando Rd.	Sylmar	91342	818-415-9509	Veteran
Oakridge Homes	15455 Glenoaks Blvd.	Sylmar	91342	818-362-5000	Veteran
Harbour Community Apartments	12157 San Fernando Rd.	Sylmar	91342	818-364-7039	Veteran
Olive Manor Senior Apartments	13115 Bromont Ave.	Sylmar	91342	818-833-0298	Senior Veterans Only
Budlong Manor	11998 Terra Bella St.	Sylmar	91342	818-896-9728	Senior Veterans Only
Valley Pride Village Apartments	13200 Bromont Ave.	Sylmar	91342	818-362-2616	Senior Veterans Only
Day Street Apartments	7639 W. Day Street	Torrance	90502	818-255-2785	Veteran
Alta South Bay	22344 S. Vermont Ave.	Torrance	90502	424-244-3025	Senior Veterans Only
BlixVillas	14745 Blythe St.	Van Nuys	91401-91406	213-407-3772	Veteran
The Summit On Woodman	7354 Woodman Ave.	Van Nuys	91401-91406	818-860-9286	Veteran
Sepulveda Place Apartments	7317 Sepulveda Blvd.	Van Nuys	91401-91406	818-961-7076	Veteran
Oaktree Village Apartments	15231 Sherman Way	Van Nuys	91401-91406	213-380-7935	Veteran
Archwood Court	6740 Hazeltine Ave.	Van Nuys	91401-91406	818-350-1600 Ext. 605	Veteran
Angels City Lights	13915 W. Oxnard St.	Van Nuys	91401-91406	818-988-0275	Veteran
Greenbush Villas	13426 Vanowen St.	Van Nuys	91401-91406	818-480-0190	Veteran
Ivy Terrace Apartments	13751 Sherman Way	Van Nuys	91401-91406	213-222-1001	Veteran
Crest Apartments	13604 W. Sherman Way	Van Nuys	91401-91406	818-672-7623	Veteran
RHF Vistas Apartments	15211 Sherman Way	Van Nuys	91401-91406	818-786-1503	Senior Veterans Only
RHF West Valley Towers	14650 Sherman Way	Van Nuys	91401-91406	(818) 786-0113	Senior Veterans Only
Andalucia Senior Apartments	15305 Lanark St.	Van Nuys	91401-91406	818-756-0000	Senior Veterans Only
La Coruna	15305 Lanark St.	Van Nuys	91401-91406	818-756-0000	Senior Veterans Only
Adda and Paul Safran Senior Housing	151 Ocean Front Walk	Venice	90291	310-450-9545	Senior Veterans Only
Imani Fe Apartments	10424 S. Central Ave.	Watts	90002	323-249-0732	Veteran
Detroit Family Apartments	1155 N. Detroit St.	West Hollywood	90046	323-650-8771	Veteran
Whittier Terrace Apartments	11445 Santa Gertrudes Ave.	Whittier	90604	818-888-5218	Veteran
Vista del Mar	1116W. DSt.	Wilmington	90744	562-755-7760	Veteran
New Dana Strand Townhomes	450 King Ave.	Wilmington	90744	310-241-6867	Veteran
Roscoe Apartments	450 King Ave.	Wilmington	90744	310-549-4138	Veteran
Roscoe Apartments	20234 Roscoe Blvd.	Winnetka	91306	818-960-2063	Veteran
Winnetka Village - Senior Apartments	20750 Sherman Way	Winnetka	91306	818-710-1305	Senior Veterans Only
Bella Vista	6150 De Soto Ave.	Woodland Hills	91367	909-865-2470	Veteran

HOUSING RESOURCES & PROGRAMS

This section provides information about financial assistance, temporary shelters, transitional programs, and other housing resources.



Public Housing Authorities

These government agencies run public housing and/or housing assistance programs, including Section 8, in the Los Angeles and Ventura areas. **Contact these agencies to apply for housing assistance.**

Los Angeles County

Baldwin Park Housing Authority

14403 E. Pacific Ave.
Baldwin Park, CA 91706
626-869-7500 Office
626-813-5285 Application Line

Burbank Housing Authority

150 N. 3rd Street
Burbank, CA 91510
818-238-5160

Compton Housing Authority

700 N. Bullis Rd.
Compton, CA 90221
310-605-3080

Culver City Housing Authority

9770 Culver Blvd.
Culver City, CA 90232
310-253-5780

Glendale Housing Authority

141 N. Glendale Ave. Ste. 202
Glendale, CA 91026
818-548-3936

Hawaiian Gardens Housing Authority

21815 Pioneer Blvd
Hawaiian Gardens, CA 90716 562-420-
2641 x 270

Hawthorne Dept. of Housing & Community Development

4455 W. 126th Street Hawthorne, CA
90250
310-349-1603

Inglewood Housing Authority

1 W. Manchester Blvd., Suite 750
Inglewood, CA 90301
310-412-5221

Long Beach Housing Authority

521 East 4th Street
Long Beach, CA 90802
562-570-6985

Housing Authority of the City of Los Angeles

2600 Wilshire Blvd.
Los Angeles, CA 90057
213-252-2500

Los Angeles County Development Authority

700 W. Main Street
Alhambra, CA 91801
(800) 731-4663
(626) 262-4510

Los Angeles County Development Authority - Antelope Valley

2323 Palmdale Blvd., Suite B
Palmdale, CA 93550
661-575-1511

Norwalk Housing Authority 12700

Norwalk Blvd. Room 11
Norwalk, CA 90650
562-929-5588

Pasadena Housing Authority

649 N. Fair Oaks Ave. Suite 202
Pasadena, CA 91103
626-744-8300

Pico Rivera Housing Authority

6615 Passons Blvd.
Pico Rivera, CA 90660
562-801-4347

Pomona Housing Authority

505 S. Garey Ave.
Pomona, CA 91769
909-620-2368

Redondo Beach Housing Authority
1922 Artesia Blvd.
Redondo Beach, CA 90278
(310) 318-0635

South Gate Housing Authority
8650 California Avenue
South Gate, CA 90280
323-563-9599

Santa Monica Housing Authority
1901 Main St. Suite C
Santa Monica, CA 90405
310-458-8740

Torrance Housing Authority
3031 Torrance Blvd.
Torrance, CA 90503
310-618-5840

Ventura County

Oxnard Housing Authority
435 South D Street Oxnard, CA 93030
805-385-8041

Port Hueneme Housing Authority
250 N. Ventura Road
Port Hueneme, CA 93041 805-986-6527

San Buenaventura Housing Authority
995 Riverside Street
Ventura, CA 93001
805-648-5008

Santa Paula Housing Authority
15500 West Telegraph Road, Suite B-11
Santa Paula, CA 93060
805-525-3339

Ventura County Housing Authority
1400 W. Hillcrest Dr.
Newbury Park, CA 91320
805-480-9991



City of Bell Gardens



NOTE:
Does not cover
past due rent;
only future rent

PLHA Rental Assistance Program



- ◆ The City of Bell Gardens is now providing up to 12 months in rent subsidy to qualified renters at risk of homelessness.
- ◆ This assistance is made possible by the State’s PLHA (Permanent Local Housing Allocation) Program and the Los Angeles County Development Authority (LACDA).
- ◆ To be eligible, households must meet the following criteria:
 1. Have a minimum area median income (AMI) of 30%.
 2. Be able to contribute 60% or more of their total monthly income towards rent.
- ◆ Financial assistance will be in the form of a monthly rent subsidy paid directly to the landlord or property owner.
- ◆ Case management includes, but is not limited to, application review, housing stability assistance, homeless prevention, guidance with tracking expenses, managing bills, and prioritizing financial obligations.
- ◆ Assistance and funds will be available on a first-come, first-serve basis and until funds are depleted.

To submit an application, please contact:

Community Family Service Center
6662 Loveland Street
Bell Gardens, CA 90201
(562) 928-2000

Community Development Housing Division
7100 Garfield Avenue
Bell Gardens, CA 90201
(562) 806-7700 Ext. 7257

2023 Income Limits

Number of Persons	Extremely Low-Income	Very Low-Income	Moderate-Income	Moderate-Income (120%)	Moderate-Income (150%)
1	\$26,500	\$52,980	\$70,650	\$105,900	\$109,000
2	\$30,300	\$60,540	\$80,750	\$121,050	\$124,600
3	\$34,100	\$68,100	\$90,850	\$136,200	\$140,150
4	\$37,850	\$75,660	\$100,900	\$151,300	\$155,700
5	\$40,900	\$81,720	\$109,000	\$163,450	\$168,200
6	\$43,950	\$87,780	\$117,050	\$175,550	\$180,650
7	\$46,950	\$93,840	\$125,150	\$187,650	\$193,100
8	\$50,000	\$99,900	\$133,200	\$199,750	\$206,110



You may also want to apply for the Los Angeles County Rental Assistance Program online as another option at:

www.lacountyrentrelief.com

Or call (877) 849-0770
Monday – Sunday*
7:00 a.m.-7:00 p.m. PST
*Except for state and federal holidays

City of Bell Gardens
7100 Garfield Ave.
Bell Gardens, CA 90201

Postal Customer
Bell Gardens
CA 90201

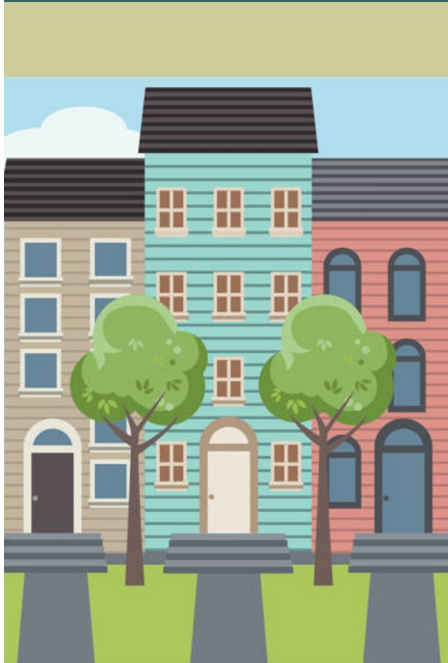
Presorted Standard
U.S. Postage PAID
Permit #213
Bell Gardens
CA90201



Ciudad de Bell Gardens



Programa de Asistencia para el Alquiler de PLHA



- ♦ La Ciudad de Bell Gardens ahora está proporcionando hasta 12 meses en subsidios de alquiler a inquilinos calificados en riesgo de quedarse sin hogar.
- ♦ Esta asistencia es posible gracias al Programa del Estado PLHA (Programa de Asignación de Vivienda Local Permanente) y a la Autoridad de Desarrollo del Condado de Los Angeles (LACDA).
- ♦ Para ser elegibles, los hogares deben cumplir con los siguientes criterios:
 1. Tener un ingreso medio mínimo del área (AMI) del 30%.
 2. Ser capaz de contribuir con el 60% o más de sus ingresos mensuales totales para el alquiler.
- ♦ La asistencia financiera será en forma de un subsidio mensual de alquiler pagado directamente al arrendador o dueño de la propiedad.
- ♦ La administración de casos incluye, entre otros, la revisión de solicitudes, asistencia para la estabilidad de la vivienda, prevención de personas sin hogar, orientación con el seguimiento de gastos, administración de facturas y priorización de obligaciones financieras.
- ♦ La asistencia y los fondos estarán disponibles por orden de llegada y hasta que se agoten los fondos.

Para presentar una solicitud, por favor comuníquese al:

Community Family Service Center
6662 Loveland Street
Bell Gardens, CA 90201
(562) 928-2000

Community Development Housing Division
7100 Garfield Avenue
Bell Gardens, CA 90201
(562) 806-7700 Ext. 7257

Límites de Ingresos para 2023

Numero de Personas	Ingresos Extremadamente Bajos	Ingresos Muy Bajos	Ingresos Moderados	Ingresos Moderados (120%)	Ingresos Moderados (150%)
1	\$26,500	\$52,980	\$70,650	\$105,900	\$109,000
2	\$30,300	\$60,540	\$80,750	\$121,050	\$124,600
3	\$34,100	\$68,100	\$90,850	\$136,200	\$140,150
4	\$37,850	\$75,660	\$100,900	\$151,300	\$155,700
5	\$40,900	\$81,720	\$109,000	\$163,450	\$168,200
6	\$43,950	\$87,780	\$117,050	\$175,550	\$180,650
7	\$46,950	\$93,840	\$125,150	\$187,650	\$193,100
8	\$50,000	\$99,900	\$133,200	\$199,750	\$206,110



También puede aplicar para el Programa de Asistencia para el Alquiler del Condado de Los Angeles en línea como otra opción en:

www.lacountyrentrelief.com

O llame al (877) 849-0770
Lunes – Domingo

7:00 a.m.- 7:00 p.m. PST

*excepto los días festivos estatales y federales



NEW HOUSING PROGRAM

Interest List Open for Rental Assistance

The City will be awarding six (6) months of rental assistance to applicants on a first-come, first-served basis.



To qualify you must:

- Be a renter in the City of Cudahy
- Be struggling to make rental payments because of some financial hardship
- Ensure your landlord is willing to participate and supply a W-9 form to the City
- Meet the income limits shown in the table below

HOUSEHOLD SIZE	1	2	3	4	5	6	7	8
MAX. ANNUAL INCOME LIMIT	\$26,500	\$30,300	\$34,100	\$37,850	\$40,900	\$43,950	\$46,950	\$50,560

These funds shall be applied to current or future rent payments only.

Interest forms available now!

Visit <https://www.cityofcudahy.com/469/Rental-Assistance> to fill one out

For more information on this program, please email Housing@cityofcudahyca.gov, call (323) 773-5143, or visit City Hall at 5220 Santa Ana Street.

SUBMITTAL OF AN INTEREST FORM DOES NOT GUARANTEE FUNDS WILL BE AWARDED

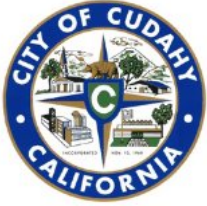
Interest Form (English):

https://www.cityofcudahy.com/DocumentCenter/View/1782/Rental-Assistance-Interest-Form_FINAL-FILLABLE?bidId=

Interest Form (Spanish):

https://www.cityofcudahy.com/DocumentCenter/View/1784/Rental-Assistance-Interest-Form_FINAL-SPANISH-Fillable?bidId=

If you meet these income requirements and are interested in applying, you can complete an interest form and submit it to Housing@cityofcudahyca.gov.



NUEVO PROGRAMA DE VIVIENDA

Lista de Interés Abierta para Asistencia de Alquiler

La Ciudad otorgará seis (6) meses de asistencia para el alquiler a los solicitantes por orden de llegada.



Para calificar, usted debe:

- Conviértete en un inquilino en la ciudad de Cudahy
- Tener dificultades para hacer pagos del alquiler debido a algunas dificultades financieras
- Asegúrese de que su arrendador esté dispuesto a participar y proporcione un formulario W-9 a la Ciudad
- Cumplir con los límites de ingresos que se muestran en la siguiente tabla

Tamaño del Hogar	1	2	3	4	5	6	7	8
Límite Máximo de Ingresos Anuales	\$26,500	\$30,300	\$34,100	\$37,850	\$40,900	\$43,950	\$46,950	\$50,560

Estos fondos se aplicarán únicamente a los pagos de alquiler actuales o futuros.

¡Los formularios de interés ya están disponibles!

Visite <https://www.cityofcudahy.com/469/Rental-Assistance> para llenar uno

Para obtener más información sobre este programa, envíe un correo electrónico a Housing@cityofcudahyca.gov, llame (323) 773-5143, o visite el Ayuntamiento 5220 Santa Ana Street.

EL ENVÍO DE UN FORMULARIO DE INTERÉS NO GARANTIZA QUE SE OTORGUEN FONDOS

Interest Form (English):

https://www.cityofcudahy.com/DocumentCenter/View/1782/Rental-Assistance-Interest-Form_FINAL-FILLABLE?bidId=

Interest Form (Spanish):

https://www.cityofcudahy.com/DocumentCenter/View/1784/Rental-Assistance-Interest-Form_FINAL-SPANISH-Fillable?bidId=

If you meet these income requirements and are interested in applying, you can complete an interest form and submit it to Housing@cityofcudahyca.gov.

LA COUNTY CES RESOURCES 2023

SHELTER, SUPPORTIVE SERVICES, HOUSING REFERRALS

Need a place to sleep tonight?

Call 211, the numbers below or visit lahsa.org/ces/home/gethelp for details.



Shelter for Adults
(age 18 +)
(800) 548-6047



Shelter for Families
(Household with a child under age 18)
2-1-1



Shelter for Youth
(age 16-24)
(800) 548-6047

QUICK GUIDE FOR CES ACCESS CENTERS

Call for interim housing and shelter; emergency food provision, healthcare, hygiene services, storage; housing referrals.

	AREA	ADULTS (ages 18+)	FAMILIES	YOUTH (ages 16-24)
1	Antelope Valley	The Salvation Army (661) 948-3418	Valley Oasis (661) 239-9300	Volunteers of America (661) 952-7095
2	San Fernando & Santa Clarita Valley	Hope of the Valley (818) 804-5507 San Fernando Valley Mental Health Center (818) 901-4836	LA Family Housing (818) 255-2766	Volunteers of America (818) 691-5506 & (213) 610-7531
3	San Gabriel Valley	Volunteers of America – El Monte (626) 442-4357	Union Station (626) 337-0140	Hillsides/YMO (626) 765-6010
4	Central Los Angeles	Downtown Women's Center (213) 680-0600; Weingart (213) 833-5020; The Midnight Mission (213) 624-9258; The Salvation Army – Hollywood (323) 337-1666	PATH (310) 212-6285	LA LGBT Center (323) 860-2280 My Friend's Place (323) 908-0011 Ext100
5	West Los Angeles	St. Joseph Center (310) 399-6878 The People Concern (310) 450-4050	St. Joseph Center (310) 694-6035	Safe Place for Youth (310) 902-2283
6	South Los Angeles	HOPICS (323) 948-0444 & HOPICS Navigation (323) 814-9100 Ext 711 Watts Labor Community Access Center (323) 563-4721	HOPICS (323) 432-4383	CRCD/Ruth's Place (323) 432-2440
7	East Los Angeles	American Family Housing (562) 378-5552	The Whole Child (562) 204-0640	Jovenes (323) 621-2213
8	South Bay/Harbor	Harbor Interfaith Services (424) 276-3602	Harbor Interfaith (310) 831-0589	Sanctuary of Hope (424) 374-8038



Note: If your Section 8 voucher is rejected in rental housing, call HRC at 1-800-477-5977 or email us at info@housingrightscenter.org.



UNHOUSED OR AT RISK?



Call 211 or a program below for help in your search for housing, shelter and/or resources.

(W) = Women; (M) = Men; (TAY) = Transitional aged youth ages 18-24. (C) = Children are welcomed.

"Transitional housing" is shared housing and may consist of shared bedrooms.

Program	Program Type	Population	Contact/Apply	Details	Address
Advancing Communities Together	Emergency winter shelter	Adults ages 18+	(661) 266-8900	Saturday and Sunday 24 hours. Call 211 for transportation.	38626 9th St., E. Palmdale, CA 93550
Volunteers of America of Los Angeles	Emergency services and housing navigation	TAY	(323) 579-0489; (323) 872-0273	Help with security deposit, partial rent, and mental health counseling. Must work 35+ hours; attend college.	S. 412 E. Beverly Blvd, LA 90022
Central Neighborhood Health Foundation	Housing navigation and tenancy support	General	(323) 325-5882	Help with housing search and GR application; move in costs, security deposits and rental assistance	2614 S. Grand Ave., LA 90007
DWC - Community Based Housing	Rapid Re-Housing	Unhoused or at risk (W) veterans Pregnant (W) currently or previously unhoused or in unsafe environment	(213) 308-3396; (323) 640-9344	Help with case management and housing navigation. ID, SSN card, birth certificate of child, proof of income are required.	325 S. Los Angeles St. Suite 200, LA, 90013
Harvest Home	Residential program		(110) 452-1223 #5	Help with mental health counseling, financial literacy, bible study, nutrition classes; case management.	
Above and Beyond Housing	Transitional housing	(M)		\$45 application fee; \$600 monthly rent w/utilities	
Bright Path Center	Transitional housing	General	(323) 345-4322		

Call 211 or a program below for help in your search for housing, shelter and/or resources.

(W) = Women; (M) = Men; (TAY) = Transitional aged youth ages 18-24. (C) = Children are welcomed.

"Transitional housing" is shared housing and may consist of shared bedrooms.

Program	Program Type	Population	Contact/Apply	Details	Address
NehemiahLA Dream Chaser	Transitional housing	Formerly TAY (W)	https://form.jotform.com/230936596559069	Ages 20-26 no longer in foster care; must work or attend school full time, or both part time; pass background check	SPA 7
New Economics for Women - La Posada	Transitional housing	(W); (C)	(213) 483-2058	1 child up to 8 years of age welcomed; \$500 monthly rent	
Noah's Transitional Housing	Transitional housing	Individuals; Families	(424) 307-4531	Private and shared rooms	
Olive Services Group	Transitional housing	(W) in re-entry; (C)	(661) 941-8688		West Lancaster, CA
SAFE Transitional Housing	Transitional housing	(W); (C)	(323) 509-4135	All bills paid.	
SHARE!	Transitional housing	(M)	(877) 742-7349	SSI or equivalent income required.	
The AMAAD Institute	Transitional housing	GBTQ ages 18+ (M)	HousingTeam@amaad.org		
The Infinity House	Transitional housing	General	(888) 762-7584	\$750 monthly rent	
Turning Point	Transitional housing	Sober re-entry (W)	(323) 296-1840		LA, CA 90008

If you find a correction must be made, please notify HRC.



HOMELSSNESS PREVENTION PROGRAM



LAST UPDATED May 16, 2023

WHAT IS HOMELESS PREVENTION?

Homeless Prevention provides individuals and families who are at imminent risk of homelessness with:

- Temporary financial assistance and housing stabilization services necessary to maintain their current housing, OR
- Assistance finding new housing to avoid becoming homeless and entering the emergency shelter system.

WHO IS ELIGIBLE FOR THE HOMELESS PREVENTION PROGRAM?

Homeless Prevention may be available to persons who meet all the following criteria:

- Experiencing a financial crisis; and
- Have received an Unlawful Detainer (court eviction hearing notice or court-ordered eviction) or a written notice of intent to terminate tenancy from a landlord (includes 3-day pay or quit); and
- Lacks financial resources and support networks to obtain other permanent housing. Participants must be screened by the Prevention Program provider and deemed as having a high risk of becoming homeless.

WHAT ARE THE REQUIRED INCOME ELIGIBILITY GUIDELINES FOR ASSISTANCE?

- Must fall below the 50% Area Median Income (AMI)
- Formerly Homeless Section 8 holders with income up to 80% of Area Median Income (AMI)

2023 AMI Area Median Income	Household Size							
	1	2	3	4	5	6	7	8
0% to 50% Income Limits Annual Household Income	\$44,150	\$50,450	\$56,750	\$63,050	\$68,100	\$73,150	\$78,200	\$83,250
51% to 80% Income Limits Annual Household Income	\$70,650	\$80,750	\$90,850	\$100,900	\$109,000	\$117,050	\$125,150	\$133,200



@lahsaorg
@LAHomeless
@LAHomelessServicesAuthority



WHAT SERVICES DOES THE HOMELESS PREVENTION PROGRAM INCLUDE?

Services	Financial Assistance	
<ul style="list-style-type: none"> Housing Stabilization Housing Search & Placement Income Stabilization Landlord Mediation & Advocacy Legal Advocacy Reunification/Relocation Assistance 	<ul style="list-style-type: none"> Security Deposit Rental Arrears Rental Assistance Utility Deposit Utilities Assistance Utility Arrears Move-in Expenses 	<ul style="list-style-type: none"> Moving Expenses Essential Furnishings Expenses Employment Expenses Transportation Expenses Reunification/Relocation Expenses

WHERE CAN I ACCESS THIS PROGRAM?

Homelessness Prevention resources can be accessed by contacting a service provider in your area:

FAMILY SERVICE PROVIDERS

Service Planning Area (SPA)	Provider	Contact
SPA 1: Antelope Valley	Valley Oasis	661-942-2758 661-239-9300 ext. 500
SPA 2: San Fernando Valley	LA Family Housing	referrals@lafh.org
SPA 3: San Gabriel Valley	Union Station Homeless Services	fscreferral@unionstationhs.org (626) 337-0140
SPA 4: Metro Los Angeles	People Assisting the Homeless (PATH)	familyreferral@epath.org (323) 212-6285
SPA 5: West Los Angeles	St. Joseph Center	RRHSPA5@stjosephctr.org
SPA 6: South Los Angeles	Special Services for Groups-HOPICS	Epp@hopics.org 323-432-499
SPA 7: East Los Angeles	The Whole Child	562-204-0640 Ext.600
SPA 8: South Bay	Harbor Interfaith Services	310-831-0589



@lahsaorg
@LAHomeless
@LAHomelessServicesAuthority



ADULT SERVICE PROVIDERS

Service Planning Area (SPA)	Provider	Contact
SPA 1: Antelope Valley	Valley Oasis	661-942-2758 661-239-9300 ext. 400
SPA 2: San Fernando Valley	LA Family Housing	referrals@lafh.org
SPA 3: San Gabriel Valley	Volunteers of America (VOA)	cavilez@voala.org (626) 442-4357
SPA 4: Metro Los Angeles	People Assisting the Homeless (PATH)	spa4referrals@epath.org 323-644-2200/323-391-3553
	The People Concern	323-313-3700
SPA 5: West Los Angeles	The People Concern	spa5preventionrrh@thepeopleconcern.org
	People Assisting the Homeless (PATH)	213-332-4066
	St. Joseph Center	RRHSPA5@stjosephctr.org
SPA 6: South Los Angeles	Special Services for Groups-HOPICS	epp@hopics.org 323-432-4399
	St. Joseph Center	323-905-1140
	Volunteers of America	DeAnna Simms Dsims@voala.org 213-392-9036 Kanna Curtis Kcurtis@voala.org 323-508-3846
SPA 7: East Los Angeles	People Assisting the Homeless (PATH)	SPA7PreventionReferrals@epath.org 213-359-7595
SPA 8: South Bay	1736 Family Crisis Center	323-737-3900
	Harbor Interfaith Services	310-831-0589
	People Assisting the Homeless (PATH)	Laria Breland LariaB@epath.org Courtney Reed CourtneyR@epath.org



@lahsaorg
@LAHomeless
@LAHomelessServicesAuthority



YOUTH SERVICE PROVIDERS

Service Planning Area (SPA)	Provider	Contact
SPA 1: Antelope Valley	Valley Oasis	661-942-2758 661-239-9300 ext. 400
SPA 2: San Fernando Valley	The Village Family Services	818-755-8786
SPA 3: San Gabriel Valley	Sycamores Child and Family Services	youthreferral@sycamores.org 855-600-0777
SPA 4: Metro Los Angeles	Covenant House	icamposcristobal@covca.org 323-461-3131 ext. 313
SPA 5: West Los Angeles	St. Joseph Center	danielt@safeforyouth.org
SPA 6: South Los Angeles	Coalition for Responsible Development	Samantha Kidd Skidd@coalitionrcd.org 323-206-6954
	Volunteers of America	DeAnna Simms Dsimms@voala.org 213-392-9036
SPA 7: East Los Angeles	Jovenes, Inc.	jdelacruz@jovenesinc.org
SPA 8: South Bay	Harbor Interfaith Services	310-831-0589



Scan me for direct links to provider websites and additional resources!



@lahsaorg
@LAHomeless
@LAHomelessServicesAuthority



SAFE PARKING SITES							
Service Provider	SPA	Location	Phone Number	Email	Operating Hours	RVs Allowed?	Population Served
Volunteers of America	1	Lancaster	(661) 723-4873	icaves@voala.org	24 Hours	Yes	Adults & Youth
North Valley Caring Services	2	North Hills	(747) 217-2968	referrals@nvcinc.org	Mon-Fri: 7 p.m. – 7 a.m. Sat-Sun: 7 p.m. – 6 a.m.	No	Adults & Families
North Valley Caring Services	2	Canoga Park	(747) 217-2968	referrals@nvcinc.org	7 p.m. – 7 a.m.	No	Adults, Families & Youth
North Valley Caring Services	2	Northridge	(747) 217-2968	referrals@nvcinc.org	7 p.m. – 7 a.m.	Yes	Adults Families & Youth
Safe Parking LA	2	Reseda	(323) 210-3375	intakes@safeparkingla.org	7:30 p.m. - 6:30 a.m.	No	Adults & Families
Volunteers of America	2	Van Nuys	(213) 247-6261	nshea@voala.org	9 p.m. – 6 a.m.	No	Adults
End Homelessness CA	4	Glassell Park	(424) 343-7752	safeparking@theshowerofhope.org	7 p.m. – 7 a.m.	Yes	Adults
End Homelessness CA	4	Westlake	(424) 343-7752	safeparking@theshowerofhope.org	7 p.m. – 7 a.m.	Yes	Adults
Safe Parking LA	4	Downtown LA	(323) 210-3375	intakes@safeparkingla.org	7:30 p.m. - 7:30 a.m.	No	Adults, Families & Youth
Safe Parking LA	4	Hollywood	(323) 210-3375	intakes@safeparkingla.org	7:30 p.m. – 7:30 a.m.	No	Adults, Families & Youth
Safe Parking LA	5	Sawtelle	(323) 210-3375	intakes@safeparkingla.org	7:30 p.m. - 7:30 a.m.	No	Adults, Families & Youth
Safe Parking LA	5	West LA VA	(323) 210-3375	intakes@safeparkingla.org	6:30 p.m. - 7:30 a.m.	Yes	Veterans (Adults, Families & Youth)
Safe Parking LA	5	Culver City	(323) 210-3375	intakes@safeparkingla.org	7:30 p.m. - 7:30 a.m.	No	Adults, Families & Youth
Special Services for Groups (HOPICS)	6	South LA	(323) 948-0444	safeparking@hopics.org	8:15 p.m. – 7 a.m.	Yes	Adults & Families
Special Services for Groups (HOPICS)	6	South Central	(323) 948-0444	safeparking@hopics.org	7 p.m. – 7 a.m.	No	Adults
Special Services for Groups (HOPICS)	6	Compton	(323) 948-0444	safeparking@hopics.org	7:30 p.m. - 6:30 a.m.	Yes	Adults & Families
WLCAC	6	Watts	(213) 408-6510	lzayed@wlcac.org	7 p.m. – 10 a.m.	Yes	Adults & Youth
Volunteers of America	7	Whittier	(213) 247-6261	nshea@voala.org	8 p.m. - 6:30 a.m.	No	Adults & Families
Volunteers of America	7	East LA	(213) 247-6261	nshea@voala.org	24 Hours	No	Adults & Families
Volunteers of America	8	San Pedro	(213) 247-6261	nshea@voala.org	6 p.m. – 6 a.m.	No	Adults, Families & Youth
WLCAC	8	Torrance	(213) 408-6510	lzayed@wlcac.org	7 p.m. – 6 a.m.	No	Adults, Families & Youth

2023-2024 Winter Shelter Program Season

November 1, 2023 – March 31, 2024

LAST UPDATED November 24, 2023

ARE YOU IN NEED OF A SHELTER?

The Winter Shelter Program is held annually to protect people experiencing homelessness during Los Angeles's colder months. Winter Shelters are located across the County and will be operating 24 hours a day, 7 days a week this year.

AM I ELIGIBLE FOR THE WINTER SHELTER PROGRAM?

To have access to the winter shelter program, you must be:

- At least 18 years old or older
- Experiencing homelessness

WHAT TO EXPECT AT A WINTER SHELTER SITE?

- Shelters will follow new DPH guidelines regarding protocols for COVID-19 and Monkeypox to keep everyone healthy and safe on site.
- Shelters welcome pets and emotional support animals.
- Shelters will serve 3 meals a day.

ACCESSING A WINTER SHELTER

1 SHELTER LOCATIONS

On page 2 is a list of shelter locations and their address.

2 CALL TO CHECK AVAILABILITY

From any phone, dial 2-1-1 to be referred to a shelter location closest to you.

1. Press 4 for English
2. When prompted, press 3 for Emergency Food or Shelter
3. When prompted, press 2 for Emergency Shelter
4. When prompted, press 1 for singles/couples without children seeking Winter Shelter

Or call 1-800-548-6047 for fast service.

211 LA County will ensure a bed is available before the referral. There are a limited number of beds at each site.

3 PACK YOUR BAGS

All shelters have a **two (2) bag restriction**. Anything more will not be allowed on the site.

4 FIND TRANSPORT

Transport is available for those in need.

2023-2024 Programa de Albergue de Invierno

Fechas de Funcionamiento:

1 de Noviembre 2023 - 31 de Marzo 2024

¿NECESITA UN ALBERGUE DE EMERGENCIA?

Los albergues de invierno son un programa que se realiza anualmente en Los Angeles para proteger a las personas sin hogar durante los meses más fríos del año. Los albergues se encuentran distribuidos a lo largo del condado de Los Angeles y operarán las 24 horas del día, 7 días a la semana.

¿SOY ELEGIBLE PARA EL PROGRAMA DE ALBERGUES DE INVIERNO?

Los requisitos para acceder a uno de los albergues de invierno son:

- Tener por lo menos 18 años
- No tener un lugar donde vivir

¿QUÉ ESPERAR DE UN ALBERGUE DE INVIERNO?

- Los albergues seguirán las directivas del Departamento de Salubridad y protocolos de el COVID-19 y viruela de mono para mantener a todos sanos y seguros durante su estancia.
- Los albergues admiten mascotas y animales de apoyo emocional.
- Los albergues sirven 3 comidas al día.

CÓMO ACCEDER A UN ALBERGUE DE INVIERNO

1 ENCUENTRE UN ALBERGUE

En la página 2 encontrará la lista de los albergues con sus direcciones. Elija aquel que se encuentre más cerca a usted.

2 LLAME PARA CONFIRMAR LA DISPONIBILIDAD DE ESPACIO

De cualquier teléfono, marque 2-1-1 para ser conectado al albergue más cercano a usted. Siga las siguientes instrucciones:

1. Presione 5 para ser atendido en español
2. Cuando se lo indique, presione 3 para albergues y comida
3. Cuando se lo indique, presione 2 para albergues
4. Cuando se lo indique, presione 1 para individuos o parejas sin hijos buscando albergue para el invierno

Si desea un servicio más rápido, marque 1-800-548-6047. El servicio 211 LA County se asegurará de que haya una cama disponible para usted antes de ser referido al albergue. Existe un número limitado de camas en cada albergue.

3 PERTENENCIAS




Solo se permiten dos (2) bolsas por persona.

4 MEDIO DE TRANSPORTE

El transporte es limitado - llame a 2-1-1 para información sobre transporte al albergue.

For any inquiries, please email us at wintershelter@lahsa.org

For more information, please call the Winter Shelter Hotline at 1 (800) 548-6047 or visit LAHSA.ORG/WINTER-SHELTER

 @lahsaorg
 @LAHomeless
 @LAHomelessServicesAuthority



Seasonal Winter Shelter Sites

SPA	CD	SD	Period of Operation	Location	Service Provider	Address	# Of Beds	Population Served
1	NA	5	12/4/2023-3/31/2024	HD MACC Glenchur	Volunteers of America	45150 60th St., W. Lancaster, 93536	44	Gender Inclusive
1	NA	5	11/24/2023-3/31/2024	ACT Adult WSP Site	Advancing Communities Together	38626 9th St E. Palmdale, CA 93550	35	Gender Inclusive
4	8	2	11/1/2023-3/31/2024	HAL Adult WSP Site	Home at Last	8768 S. Broadway Los Angeles, CA 90003	50	Female
6	8	2	11/6/2023-3/31/2024	NR Adult WSP Site	New Reflections	8311 S Western Ave Los Angeles, CA 90047	55	Male
6	10	2	11/1/2023-3/31/2024	AB Adult WSP Site	Abundant Blessings	1133 S Ardmore Ave Los Angeles, CA 90006	32	Male
6	9	2	11/13/2023-3/31/2024	BT Adult WSP Site	Bryant Temple Community Development	5500 S. Hoover St. Los Angeles, CA 90037	60	Male
6	8	2	12/1/2023-3/31/2024	ALH El Don Motel	Assured Lifestyle Housing	9519 S Figueroa Street, Los Angeles, Ca 90003	11	Gender Inclusive
6	8	2	12/1/2023-3/31/2024	ALH One Ten Motel	Assured Lifestyle Housing	700 W Florence Ave, Los Angeles, CA 90044	9	Gender Inclusive
7	NA	4	11/1/2023-3/31/2024	WFD Adult WSP Site - Whittier	Whittier First Day	12426 Whittier Blvd, Whittier, CA 90602	11	Gender Inclusive
8	NA	4	11/14/2023-3/31/2024	FTS Adult WSP Site- Long Beach	First to Serve	702 W Anaheim St. Long Beach CA 90813	40	Gender Inclusive



The list below indicates some of the Dating Violence and Domestic Violence Agencies in Los Angeles County. The list below is of some of the most comprehensive programs available to support survivors and their families. Services available per agency vary and are not subject to restriction within their SPA, please ensure to call and assess their current available services and their service area in order to align them with the survivor's needs. The **(SP)** next to the name of the agency represents that they have shelter programs.

1736 Family Crisis Center (SP)

Los Angeles, CA 90018

Office Number: (323) 737-3900

24-Hour Hotline (213) 745-6434

Casa de La Familia

Los Angeles, CA 90010

Office Number: (213) 384-7660

Children's Institute

Los Angeles, CA 90026

Office Number: (213) 260-7600

East LA Women's Center (SP)

Los Angeles, CA 90022

Office: (323) 526-5819

Haven Hills (SP)

Canoga Park, CA 91305

Crisis: (818) 887-6589

Office: (818) 887-7481

Angel Step Inn (SP)

Downey, CA 90241

Office Number: (323) 780-4357

Center for the Pacific Asian Family (SP)

Los Angeles, CA 90036

24-Hour Hotline: (800) 339-3940

Child & Family Center of Santa Clarita (SP)

Santa Clarita, CA 91350

Emergency Hotline: (661) 259-HELP (4357)

Non-Emergency Support Line: (661) 259-8175

Office: (661) 259-9439

Good Shepherd Center (SP)

Los Angeles, CA 90026

Office Number: (213) 235-1460

House of Ruth, Inc. (SP)

Claremont, CA 91711

Crisis Line: (877) 988-5559

Outreach Office: (909) 623-4364

Interval House (SP)

Seal Beach CA, 90740

Office: (562) 594-4555

Jewish Family Services Los Angeles (SP)

North Hollywood, CA 91606

Office: (818) 505-0900

Peace Over Violence

Los Angeles, CA 90017

24-Hr Hotline: 213-626-3393

310-392-8381

626-793-3385

Office: 213-955-9090

Strength United

Van Nuys, CA 90027

Crisis Line: (818) 886-0453

Office: (818) 787-9700

The People Concern/Sojourn (SP)

Santa Monica, CA 90404

Crisis Line: (866) 435-7438

Office: (310) 264-6646

Valley Oasis (SP)

Lancaster, CA 93534

24 Hour Hotline: (661) 945-6736

YWCA San Gabriel Valley (SP)

Covina CA, 91724

Crisis: (626) 967-0658

Office: (626) 960-2995

Jenesse Center (SP)

Los Angeles, CA 90008

24-Hour Hotline: (800) 479-7328

Los Angeles LGBT Center

Los Angeles, CA 90028

Office Number: (323) 993-7400

Project: PeaceMakers, Incorporated

Los Angeles, CA 90082-0361

Phone number:

Office: (323) 291-2525

Rainbow Services, Ltd. (SP)

San Pedro, CA 90731

Phone Number: (310) 548-5450

Su Casa Ending Domestic Violence (SP)

Long Beach, CA 90808

Office: (562) 402-4888

The Trevor Project

West Hollywood, CA

Hotline Number: 1-866-488-7386

Women's Shelter of Long Beach (SP)

Long Beach CA, 90832

Crisis: (562) 437-4663

Office: (562) 437-7233

YWCA of Glendale (SP)

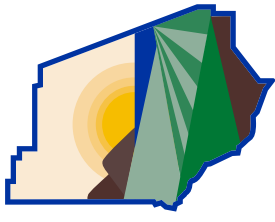
Glendale CA, 91206

(888) 999-7511

To get a full list of the available DV Resources in the County, please check out: [No DV LA Website](#)

HOPWA {HOUSING OPPORTUNITIES FOR PEOPLE WITH AIDS}

Program	City	Contact	Services Available	Eligibility Requirements
Alliance for Housing and Healing's Group Home Program - Casa Soldano	Long Beach	Request from and return application to Facility Manager, Sokha Sea, at (562) 595-4877 or ssea@alliancehh.org. Assistant Manager: Frank Wilson fwilson@alliancehh.org.	Transitional housing, for persons of all genders, unable to perform activities of daily living to meet their personal needs: Meals: Medication management: ADLs, Nursing Assistants, RN Case Managers, MSW, LCSW.	HIV/AIDS diagnosis (current form with CD4 & VL): Karnofsky Score of 70% or below: Age 18 or older: 6 month sobriety period required while in program with random testing in facilities. Negative COVID-19 test may be required: new residents will be monitored for evidence of COVID-19 for (5) days.
Redgate WE CAN Transitional Housing		Contact Esperanza Romero at (310) 701-6007 or eromero@bhs-inc.org.	Transitional housing program for women and transgender (18+) years of age or older.	SSI Benefits Award letter (dated within last 12 months): GR Awards letter (3 months of net spend transactions): Bank statements (last 3 months): D card: copy of HIV+ diagnosis.
Single Room Occupancy (SRO) Housing Corporation	Los Angeles - Central City East (Skid Row)	Housing Specialists should call (213) 633-5458 or (213) 572-0483	Emergency, transitional, and permanent supportive housing with private units: three (3) meals daily (in emergency and transitional housing); toiletries: housing specialist services: information and referrals.	Copy of HIV/AIDS diagnosis (dated within last 12 months): unhoused or at risk of becoming unhoused: referral letter: proof of low or no income: age (18+). valid D and social security card: current TB test (dated within last 6 months): negative COVID test (dated within last 30 days)
Welcoming Interim Shared Housing (WISH)	Los Angeles	www.welcomewish.org contact@welcomewish.org (424) 567-9087. Phone, emails, and virtual/in-person meetings are welcomed.	50+ beds filled for families and individuals (working to get more beds): specialized housing: sober living, women and children homes, mental health: AB 109 housing; wrap around case management and referrals: adult AA, NA, substance abuse and counseling support groups: 20 free public transit rides: vocational, recreation and self care programs: food assistance: relocation funds.	
Wesley Health Centers - HOPWA Residential Emergency Shelter Program	Los Angeles - Central City East (Skid Row)	Housing Specialist should contact Rosa Ayala at (213) 285-4260 Ext 5929 or Gustavo Arguelles at (323) 695-3084 for more information.	60 days at The Russ hotel emergency shelter (single room occupancy with shared bathroom): 3 meals daily. The Russ is located at 500 South San Pedro St, LA, CA 90013.	Referral Letter from Housing Specialist stating that the client has a history of mental illness and/or substance abuse, houselessness or on the verge of becoming unhoused. If client has a mental illness and is on medication, will need confirmation from medical provider. HIV+ diagnosis (form from medical provider): negative TB results (within last 12 months); COVID-19 vaccination card may be required: Negative COVID-19 test (within last few days of enrollment); Valid Photo ID/original Social Security Card: Income (bank statements for the last 3 months).



COUNTY of VENTURA

Human Services Agency

Resources

for People Experiencing Homelessness

Eastern Ventura County

Moorpark • Simi Valley
Thousand Oaks

This information current as of
September 2022

- Interface Children & Family Services – 4001 Mission Oaks Blvd, Camarillo 800-485-6114 **Year-round Shelters**
- There are no year-round shelters in the Simi-Conejo area
- Gabriel's House (Women/Children), Oxnard 805-487-3445
- Lighthouse Womens & Childrens Mission – Emergency Shelter Oxnard 805-385-7200
- Our Place Shelter (mentally ill) – 538 E. Thompson Blvd, Ventura 805-652-2151
- Salvation Army – Hope Center (single adults) 805-648-4977
- Ventura County Rescue Mission (men only) 805-487-1234
- 234 E. 6th St, Oxnard 805-487-1234
- **Winter Shelters**
- Simi Valley – P.A.D.S. (November–March) call for information 805-579-9166
- Thousand Oaks – Conejo Valley Winter Shelter (December–March) – call for information 805-464-3533

SHOWERS/TOILETS

- VC Rescue Mission – 234 E. 6th St, Oxnard 805-487-1234
- The Samaritan Center – 280 Royal Ave, Simi Valley (Monday–Thursday, 9 a.m.–noon) 805-579-9166
- Lutheran Social Services of Southern CA – 80 E. Hillcrest Dr, #101, T.O. (Monday, Tuesday, Wednesday, Friday, 9 a.m.–4:30 p.m.) 805-497-6207

TRANSITIONAL HOUSING

- 6633 Center – 837 E. Thompson Blvd, Ventura 805-628-3445
- Gabriel's House (The Kingdom's Center), Oxnard 805-487-3445
- RAIN Transitional Living Center (families & singles) Call for application 805-383-7505
- Sarah's House Maternity Home 805-581-1910
- Tender Life Maternity Home – 871 E. Thompson Blvd, Ventura 805-653-7474
- Veterans Transitional Housing facility in Ventura 805-652-4000
- 557 E. Thompson Blvd, Ventura 805-652-4000 x108

VETERANS SERVICES

- **Countywide**
- County of Ventura Veteran Services 2901 N. Ventura Road, 3rd Floor, Oxnard 805-477-5155
- Department of Veterans Affairs – Outpatient Clinic Veterans Center – Counseling Services (Monday–Friday, 8 a.m.–4:30 p.m.) 4440 Calle Real, Santa Barbara 805-683-1491
- Disabled Veterans Outreach (EDD) 805-288-8400
- Gold Coast Veterans Foundation 4001 Mission Oaks Blvd, #D, Camarillo 805-482-6550
- VA Oxnard Community-Based Outpatient Clinic 1690 Universe Circle, Oxnard 805-204-9135
- Ventura Vet Center (Counseling) 790 E. Santa Clara St, #100 805-585-1860
- Veterans Home of California – Ventura 10900 Telephone Rd, Ventura 805-659-7502
- Veteran Transitional Housing – Ventura 805-652-4000

Mo orpark

- Community Services Center (Ruben Castro Human Services Center) 612 Spring Rd, Bldg B, #301 Walk-in hours – Fridays, 9 a.m.–1 p.m.

- **MEDICAL**
- Health Care for the Homeless/Transition Clinic 3147 Loma Vista Rd, Ventura 805-652-6694
- Whole Person Care 805-339-1122
- **Mo orpark**
- Moorpark Family Care Center – 612 Spring Rd 805-523-5400
- Ventura County Public Health 805-981-5271 or call Toll Free 888-285-5021
- Medical Therapy for Children – 2250 N. Tracy Ave Public Health Clinic – 1133 E. Los Angeles Ave, #B 1227 E. Los Angeles Ave 805-582-4000
- Sierra Vista Family Medical Clinic Free Clinic of Simi Valley – 2003 Royal Ave (Tuesdays, 9 a.m.–1 p.m.) 805-522-3733
- Simi Valley Hospital – 2975 Sycamore Dr. 805-955-6000
- **Thousand Oaks**
- Conejo Valley Family Medical Group 125 W. Thousand Oaks Blvd, #300 805-418-9100
- Los Robles Hospital & Medical Center – 215 W. Janss Rd Westminister Free Clinic 805-497-2727
- at the United Methodist Church – 1000 E. Janss Rd (Wednesdays, 4–10:30 p.m.; first-come, first-served) 805-241-8366

MENTAL HEALTH

- **Countywide**
- Adult Crisis Team – 24-hour Hotline 866-998-2248
- Children's Intensive Response Team (for children & youth to 21 years old) 866-431-2478
- Behavioral Health Administration 1911 Williams Dr, #200, Oxnard 805-981-6830
- NAMI – National Alliance on Mental Illness (Support/Advocacy) 805-641-2426
- STAR (Access to Mental Health Services)/Crisis 1911 Williams Dr, #200, Oxnard 805-981-4233
- **Simi Valley**
- Ventura County Behavioral Health Clinic – 1227 E. Los Angeles Ave (also serves Moorpark) 805-582-4075
- **Thousand Oaks**
- Conejo Behavioral Health Clinic 125 W. To Blvd, #500, TO 805-777-3500

SENIOR CITIZENS SERVICES

- 24-hour Helpline dial 2-1-1
- Adult Protective Services (abuse/neglect) 805-654-3200
- Area Agency on Aging 646 County Square Dr, #100, Ventura 805-477-7300
- Mental Health, Older Adult Services 5740 Rakston St, Ventura 805-289-3203
- Outreachman Services (visit nursing homes) 805-656-1880
- Senior Nutrition (meal site information) 805-477-7300

SHELTERS

- **Domestic Violence Shelters**
- Coalition for Family Harmony – 24-hour Hotline 805-656-1111
- Toll Free 24-hour Hotline 800-300-2181 TTY 805-656-4439

- **Simi Valley**
- America's Job Center – 2900 N. Madera Rd, #100 Walk-in hours – Wednesdays, 8 a.m.–4 p.m.
- Simi Valley Senior Center – 3900 Avenida Simi 1st Wednesday 9 a.m.–noon – by appointment only 805-583-6363
- **Thousand Oaks**
- Supervisor Linda Parks' Office – 625 W. Hillcrest Dr Thursdays, 9 a.m.–12 noon – by appointment only
- Thousand Oaks Senior Center – 1385 E. Janss Rd Walk-in hours – 2nd Tuesday, 1:30–4 p.m.
- **YOUTH SERVICES**
- Interface Youth Rescue Line 805-469-5882
- Independent Living Program (former Foster Youth) 805-289-1990 or 805-385-9174
- Transition Age Youth (TAY Tunnel) – 141 W. 5th St, #D, Oxnard 805-240-2538
- Youth & Teens National Runaway Satellite – 24-hour Hotline 800-RUN-AWAY
- Transitions (VC Behavioral Health) 805-981-9270

Most of the agencies listed can offer only limited, temporary assistance depending on available funds. Refer to the Western Ventura County Resources brochure for resources available in other regions of the County.

Please email updated listings to
hlsa.communications@ventura.org



COUNTY of VENTURA

Human Services Agency

This brochure was prepared by:
County of Ventura Human Services Agency
Homeless Services Program

805-385-1800
www.vchsa.org

ALCOHOL & DRUG SERVICES

- 24-hour Helpline dial 2-1-1
- County Alcohol/Drug Line 805-981-9200
- Alcoholics Anonymous - Countywide Information 805-389-1444
- Español (Spanish) 805-988-0329 • Al-Anon of Ventura County 805-253-7188
- Simi Valley Center - 3150 Los Angeles Ave 805-577-1724
- Khepera House (men) treatment 805-648-2652
- 150 W. Harrison St., Ventura 805-385-7200
- Lighthouse for Women & Children 805-482-1265
- 150 N. Hayes Ave., Oxnard 805-382-6296
- Palmer Drug Abuse Program 805-382-6296
- Prototypes Women's Center 805-382-6296
- 2150 N. Victoria Ave., Oxnard 805-436-4693
- Ventura County Rescue Mission (men) 805-648-3295
- 234 E. 6th St., Oxnard 805-581-2599
- Ventura/Tri-Counties Teen Challenge 805-648-3295
- 6790 N. Ventura Ave., Ventura 805-581-2599
- Victory Outreach Church - 3701 Alamo St., Simi Valley 805-581-2599

BENEFITS

- Human Services Agency (CalWORKS, General Relief, CalFresh/Food Stamps), Medi-Cal 888-472-4463
- Simi Valley - 2900 N. Madera Rd 805-584-4844
- Moorpark - 612 Spring Rd, Bldg B, #301 805-523-5444
- Thousand Oaks - 80 E. Hillcrest Dr, #200 805-449-7320
- Social Security Administration 800-772-1213 or TTY 800-325-0778
- T.O. Office - 322 Thousand Oaks Blvd 800-772-1213
- State of California Employment Development Department (EDD) - Unemployment 888-472-4463
- The U.S. Self-Service phone line is available 24/7 at: 866-333-4606
- English/Spanish 800-300-5616
- Cantonese 800-547-3506
- Mandarin 866-303-0706
- Vietnamese 800-547-2058
- TTY (non-voice) 800-815-9387

BUS

- Dial-A-Ride (Thousand Oaks) 805-375-5467
- Connect City-to-City East County Transit Alliance
- Gold Coast Transit 805-487-4222
- Greyhound Bus 800-231-2272
- Moorpark City Transit 805-375-5473
- Simi Valley Transit 805-583-6464
- Ventura County Transportation Commission - VCTC Intercity Transit 800-438-1112

CAMPGROUNDS/CAMPING

- Ventura County Parks Dept Online Reservations 805-654-3351
- California State Parks - online camping reservations 800-444-PARK (7275) - TDD: 800-774-7275
- Moorpark - Happy Camp Canyon Park 805-654-8444
- 14105 Broadway Ave 805-654-3951
- Simi Valley - Oak Park - 901 Quimby Dr 805-654-3951
- Tapo Canyon Regional Park - 4651 Tapo Canyon Rd 805-654-3700

CHILDREN'S SERVICES

- Children's Crisis Team - 24-hour Hotline 866-431-2478
- Child Development Resources (CDR) (childcare, Head Start) 805-485-7878
- Children & Family Services (abuse, adoption, foster care) 805-955-2290
- Children's Medical Services 805-981-5281
- 5291 • CCS - California Children's Services 805-981-5281
- 2240 E. Gonzales Rd, #260, Oxnard 805-437-1559
- Homeless Education Project - 5189 Verdugo Way, Camarillo 805-641-1678
- School on Wheels Inc. - 83 S. Palm St., Ventura 805-641-1678

CITIZENSHIP/IMMIGRATION

- Concordio Family Services - 301 S. C St., Oxnard 805-486-9777
- U.S. Citizenship & Immigration Services Toll Free 866-559-9191
- 2000 Outlet Center Dr, #200, Oxnard 888-418-3053

CLOTHES

- Catholic Charities - Moorpark Panty Plus 805-529-0720
- 612 Spring Rd, #101 805-529-0720
- Lutheran Social Services 805-497-6207
- 80 Hillcrest Dr #101, Thousand Oaks 805-497-6207
- Samaritan Center - 280 Royal Ave, Simi Valley 805-579-9166
- (Monday-Thursdays, 7-11 a.m.)

DENTAL

- Child Health & Disability Prevention (CHDP) 805-981-5291
- 2240 E. Gonzales Rd, #270, Oxnard 805-981-5291
- Clinics Del Camino Real, Inc (by appointment only) 805-498-7291
- Newbury Park - 1000 Newbury Rd, #150 805-522-5722
- Simi Valley - 1424 Madera Rd 805-522-5722
- Free Clinic of Simi Valley (call for appointment) 805-522-3733
- Salvation Army Dental Services - 622 W. Wooley Rd, Oxnard 805-483-9235
- (call for appointment)

DISABLED PERSONS

- Department of Rehabilitation 805-371-6279
- 101 Hodocamp Rd, #212, Thousand Oaks 805-371-6279
- Rehabilitation Living Resource Center - 702 County Square Dr, #103, Moorpark 805-256-1036
- Voice/Fax (TTY) 805-650-5993 video phone 805-256-1036
- 888 Counties Regional Center - 2635 Park Center Dr, Simi Valley 805-522-3733

DOMESTIC VIOLENCE

- Child/Adult Abuse & Neglect 24-hour Hotline 805-654-3351
- Coalition for Family Harmony 805-656-1111
- 24-hour Bilingual Hotline 800-300-2181
- Interface Children & Family Services 800-636-6738
- Interface Youth Crisis Outreach Program 805-469-5882
- 4001 Mission Oaks Blvd, #1, Camarillo

805-385-1800

County of Ventura Human Services Agency • Homeless Services Program

DROP-IN SERVICES

- ARC Ventura County - 5143 Cochran St., Simi Valley 805-520-0999
- One-Stop Center - Church of the Nazarene - 2280 Antonio Ave, Camarillo 805-652-6694
- (4th Thursday, 8:30-11 a.m.)
- Samaritan Center - 280 Royal Ave, Simi Valley - showers, mail, clothing messages, job coaching (Monday-Thursdays, 9 a.m.-noon) 805-579-9166

HEALTH CARE

- Sierra Vista Urgent Care - 1227W. Thousand Oaks Blvd, #200 805-520-3296
- Westminister Community Care Center 805-241-8566
- 1000 E. Jarvis Rd, Thousand Oaks
- Employment Services - East County 805-955-2282
- 2900 N. Madera Rd, Simi Valley 805-529-0720
- Catholic Charities Careers - 612 Spring Rd, #101, Moorpark 805-529-0720
- California Conservation Corps - 3200 Wright Rd, Camarillo 805-278-3543
- Community Concierge - 80 E. Hillcrest Dr, T.O. 805-494-3543
- Goodwill Industries of Ventura & Santa Barbara Counties 805-526-5570
- 5145 E. Los Angeles Ave, Simi Valley
- Job Corps - Education - Work - 612 Spring Rd, #101, Moorpark 805-529-0720
- PathPoint - 1463 E. Los Angeles Ave, Simi Valley 805-520-8744
- Simi Valley Youth Employment Service 805-522-4473
- 3855-A Alamo St., Simi Valley

FOOD (also see Meals)

- FOOD Share - countywide food pantry (call for referral in your area) 805-983-7100
- Sigma Conejo Valley Food Bank - 3020 Crescent Way, T.O. 805-497-1296
- (Tuesday, 9:30 a.m.-2:30 p.m.; Thursday, 9:30 a.m.-3:30 p.m.; Saturday, 9:30 a.m.-12:30 p.m.)
- WIC (women, infants, children) 805-981-5251
- or call Toll Free 800-781-4449 #3
- 1133 E. Los Angeles Ave, #B, Simi Valley
- 125 W. Thousand Oaks Blvd, Thousand Oaks

FOOD

- Catholic Charities - 612 Spring Rd, #101 805-529-0720
- (Monday-Thursdays, 9 a.m.-1:30 p.m.; Saturday, 9 a.m.-1 p.m.)
- Simi Valley
- Salvation Army - 1407 E. Los Angeles Ave, #P 805-527-1070
- (Monday-Thursdays, 10 a.m.-2 p.m.)
- Samaritan Center (call for information) - 280 Royal Ave 805-579-9166

Moorpark

- Catholic Charities - 612 Spring Rd, #101 805-529-0720
- (Monday-Thursdays, 9 a.m.-1:30 p.m.; Saturday, 9 a.m.-1 p.m.)
- Simi Valley
- Salvation Army - 1407 E. Los Angeles Ave, #P 805-527-1070
- (Monday-Thursdays, 10 a.m.-2 p.m.)
- Samaritan Center (call for information) - 280 Royal Ave 805-579-9166

Thousand Oaks

- Christian Church of Thousand Oaks - 301 Avenida de los Flores (1st & 3rd Mondays 4-6 p.m.) 805-492-2474
- Harbor House (by appointment only) 805-464-3533
- Lutheran Social Svcs - 80 E. Hillcrest Dr, #101 805-497-6207
- Many Mansions/Hacienda de Feliz - 2084 Los Feliz Dr (2nd Saturday/month, 10 a.m.-12 noon) 805-557-2723

HOUSING/HOMELESS SERVICES

- Area Housing Authority (does NOT provide emergency housing) 1400 W. Hillcrest Dr., Newbury Park 805-480-9991
- Cabrillo Economic Development Corporation (affordable housing) 805-659-3791
- Harbor House (by appointment only) 805-464-3533
- Housing Rights Center 800-477-5977; TTY 213-201-0867
- Catholic Charities - 612 Spring Rd, #101, Moorpark 805-529-0720
- Homeless Prevention & Rental Deposit 805-385-1800
- Lutheran Social Services of Southern California 80 E. Hillcrest Dr, #101, Thousand Oaks 805-497-6207
- Many Mansions/Housing Central - 1425 E. Thousand Oaks Blvd, T.O. (Monday-Friday, 8:30 a.m.-4:30 p.m.) 805-496-4948
- Mental Health Housing /STAR 866-998-2243
- Salvation Army - Hope Center 805-648-4977
- Samaritan Center - 280 Royal Ave, Simi Valley (mornings Monday-Thursdays) 805-579-9166

INFORMATION AND REFERRAL

- Dial 2-1-1 for information 24 hours/7 days/week about Community Resources near you 805-477-7300
- Area Agency on Aging (seniors) 800-660-5474
- County of Ventura 805-385-1800
- Homeless Services Program Information

LAUNDRY

- Lutheran Social Services of Southern CA (Monday, Tuesday, Wednesday, Friday, 9 a.m.-4:30 p.m.) 80 E. Hillcrest Dr, #101, T.O. 805-497-6207
- Samaritan Center - 280 Royal Ave, Simi Valley (Monday-Thursdays, 7-11 a.m.) 805-579-9166

LEGAL SERVICES

- Conejo Free Clinic - 80 E. Hillcrest Dr, #102, Thousand Oaks (call for information) 805-497-3575
- Free Clinic of Simi Valley - 2060 Tapo St, (by appointment only) 805-522-3733
- Simi Valley Court's Family Law Self-Help Center 3855-F Alamo St, 2nd floor 805-289-8733
- Ventura Superior Court - Self-Help Legal Access Center 800 S. Victoria Ave, Rm #106, Ventura 805-289-8724

Countywide Legal Services

- California Rural Legal Assistance - 338 S. A St., Oxnard 805-486-1068
- Grey Law (60 yrs.+)- Pleasant Valley Recreation & Park District 1605 Burnley St., Camarillo 805-658-2266
- Make a free appointment 800-477-5977
- Housing Rights Center

MAIL/MESSAGES

- Moorpark - Catholic Charities - 612 Spring Rd, #101 805-529-0720
- Simi Valley - Samaritan Center - 280 Royal Ave (mornings) 805-579-9166
- Thousand Oaks - Lutheran Social Services 80 E. Hillcrest Dr, #101 805-497-6207

MAIL/MESSAGES

- Oxnard**
- Community Action Program of Ventura County
621 Richmond Ave805-436-4000

- Ventura**
- Catholic Charities – 303 N. Ventura Ave.805-643-4694
- Turning Point Foundation (mentally ill)
536 E. Thompson Blvd.805-652-2151

MEALS (also see Food)

- Rescue Mission – 6th & Meta, Oxnard – Dinner 5:30–6 p.m.
(Monday–Friday, 11–11:30 a.m. and Saturday, 12–12:30 p.m.)
- Many Meals – 121 Davis St, Santa Paula – Wednesday, 5–6 p.m.
- Family to Family – 303 N. Ventura Ave, Ventura
(Monday, Wednesday, Friday, 11 a.m.–noon and
Saturday, Sunday, 8–9 a.m.)

MEDICAL

- Health Care for the Homeless805-652-6694
- Whole Person Care805-339-1122
email:wholepersoncare@ventura.org

Countywide

- Children's Medical/Dental Services805-652-5960
- Ventura County Medical Center (VCMC)
300 Hillmont Ave, Ventura805-652-6000
- Oxnard**
- Clinicas del Camino Real – 650 Meta St.805-487-5351

- Las Flores Women's Ctr – 2400 S. C St.805-240-7000
- Las Islas Medical Clinic – 325 W. Cl Blvd.805-240-9500
- Public Health Clinic – 2500 S. C St. #D805-385-9451
- Salvation Army – 622 W. Wooley Rd. – free clinic
(Monday & Thursday)805-483-9235

Santa Paula

- Agrippa Paula Hospital – 825 N. 10th St.805-933-8888
- Ventura**
- Clinicas del Camino Real – (dental & medical)
200 S. Wells Rd805-647-6322
- Public Health Clinic – 3147 Loma Vista Rd.888-285-5012

MENTAL HEALTH

- Crisis Team – 24-hour Hotline866-998-2243
- Rise Team/OD line805-981-4233
- Mental Health Liaison805-981-4227
- Bilingual Liaison805-981-3331
- MAMI (Support/Advocacy)
5251 Verdugo Way, #K, Camarillo805-641-2426
- STAR (Access to Mental Health Svcs)866-998-2243
- Turning Point Foundation
New Visions Center 1065 E. Main, Va
Oxnard Club House – 426 W. 5th St.805-652-0596
- Ventura County Mental Health Services
4258 Telegraph Rd, Ventura805-477-5700
- 1911 Williams Dr, Oxnard805-981-4200
- 2500 S. C St, #C, Oxnard805-385-9420
- 725 W. Main St, 3rd floor, Santa Paula805-933-8480

SENIOR CITIZENS SERVICES

- 24-hour Helplinedial 2-1-1
- Adult Protective Services (abuse/neglect)805-654-3200
- Area Agency on Aging805-654-3200
- 646 County Square Dr, #100, Ventura805-477-7300
- Mental Health, Older Adult Services805-777-3500
- Ombudsman Services (visit nursing homes)805-656-1988
- Senior Nutrition (meal site information)805-477-7300

SHELTERS

Domestic Violence Shelters:

- Coalition for Family Harmony805-654-1111
- Spanish Hotline800-300-2181
- Interface Children & Family Services805-485-6114

Year-Round Shelters

- Mercy House: Oxnard Navigation Center + The Arch
9099805-399-1939
- Rescue Mission – (men only) 234 E. 6th St, Oxnard805-487-6488
- Salvation Army – Hope Center (single adults)805-648-4977

- Turning Point Foundation – Our Place Shelter (mentally ill)
536 E. Thompson Blvd, Ventura805-652-2151
- 7280 Whitouse – (women & children)805-385-4877
- Women's Shelter/Kingdom Center, Oxnard805-487-3445

Winter Shelters – (December–March)

- Ojai Valley Family Shelter (call for information)805-804-7094
- Temporary Emergency Shelter (call for information)dial 2-1-1

SHOWERS/TOILETS

- Community Action Program of Ventura County
621 Richmond, Oxnard805-436-4000
- Our Place Shelter (mentally ill)
536 E. Thompson Blvd, Ventura805-652-2151
- Rescue Mission – 234 E. 6th St, Oxnard805-487-6488

TRANSITIONAL HOUSING

- City Center – 837 E. Thompson Blvd, Ventura805-628-3400
- Kingdom Center (Gabriel's House) 1450 Rose Ave, Oxnard805-487-3400
- Lighthouse Family Center, Oxnard805-385-7200
- RAIN Transitional Living Center (families & singles)
Call for an application805-383-7505
- Tender Life Maternity Home805-653-7474
- Turning Point Countywide Supported Housing
River Haven (Ventura)805-652-2151
- Veterans Transitional Housing (Ventura)805-652-0000x102

VETERANS SERVICES

- County of Ventura Veteran Services
2901 N. Ventura Road, 3rd Floor, Oxnard805-477-5155
- Department of Veterans Affairs – Outpatient Clinic
Veterans Center – Counseling Services (Monday–Friday, 8 a.m.–4:30 p.m.)
1690 Universe Ct, Oxnard805-204-9135
- Disabled Veterans Outreach (EDO)805-288-8400
- Gold Coast Veterans Foundation
4001 Mission Oaks Blvd, #D, Camarillo805-482-6550
- Walk-in hours – Wednesdays, 8 a.m.–4 p.m.

- Ventura Veterans Center (Counseling)
790 E. Santa Clara St, #1000805-585-1860
- Veterans Home of Ventura – 10900 Telephone Rd, Ventura805-659-7502
- Veterans Transitional Housing (Ventura)805-652-0000x102

YOUTH SERVICES

- Interface Youth Rescue Line – 24-hour Hotline805-469-5882
- Independent Living Prog (former Foster Youth)805-654-3245
- Pacific Clinics – Transition Aged Youth (TAY Tunnel)
141 W. 5th St, #D, Oxnard805-240-2538
- Teen Runaway Helpline800-RUN-AWAY
- Transitions (Ventura County Behavioral Health)805-981-6830
- Toll Free866-998-2243

Most of the agencies listed can offer only limited, temporary assistance, depending on available funds. Refer to the Eastern Ventura County Resources brochure for resources available in other regions of the county.

Please email updated listings to
hsa.communications@ventura.org



COUNTY of VENTURA
Human Services Agency

This brochure was prepared by:
County of Ventura Human Services Agency
Homeless Services Program

805-385-1800

www.vchsa.org

56-15-069 9/22



COUNTY of VENTURA
Human Services Agency

Resources
for People Experiencing
Homelessness

**Eastern
Ventura
County**

Camarillo • Fillmore • Ojai • Oxnard
Port Hueneme • Santa Paula • Ventura

This information current as of
September 2022

ALCOHOL & DRUG SERVICES

- 24-hour Helpline dial 2-1-1
- County Alcohol/Drug Line 805-981-9200
- Alcoholics Anonymous - Countywide Information 805-389-1444
- Español (Spanish) 805-988-0329
- Anon of Ventura County 805-495-0270
- Oxnard Center - 1911 Williams Dr 805-981-9200
- Ventura Center - 5850 Thille St, #205 805-652-6919
- Knepera House - 330 N. Ventura Ave, Via 805-653-2596
- Lighthouse Recovery 805-385-7200
- New Start for Moms - 1911 Williams Dr, Oxnard 805-981-9250
- 9250 • Palmer Drug/Alcohol Abuse Program 805-382-6296
- 2150 N Victoria Ave, Oxnard 805-487-1234
- Rescue Mission (men) - 234 E. 6th St, Oxnard 805-648-3295
- Teen Challenge 805-648-3295
- Victory Outreach - 2875 Elba St, Ventura 805-293-9182

BENEFITS

- Human Services Agency - CalWORKS, General Relief, CalFresh Stamps, Medi-Cal
- Oxnard, Port Hueneeme, Camarillo
 - 1400 Vanguard Dr, Oxnard 805-385-9363
 - Santa Paula - 725 E. Main 805-933-8300
 - Fillmore - 828 Ventura St, #200 805-524-8666
- Ventura & Ojai
 - 4651 Telephone Rd, #100, Ventura 805-658-4100
 - Social Security Administration 800-772-1213
- Oxnard - 2000 Outlet Center Dr, #250
- Ventura - 6477 Telephone Rd, #1
- Unemployment Benefits Claims - English 800-300-5616
- Spanish 800-326-8937

BUS

- 114V/Dial-A-Ride 805-485-2319 or 800-488-Information 800-438-1112
- Gold Coast Transit - Countywide Transportation Information 805-988-4228
- Camarillo Area Transit 805-524-2319
- Fillmore Area Transportation Corporation 805-524-2319
- Greyhound Bus - 201 E. 4th St, Oxnard 805-487-2707

- Information 800-231-2222
- Gold Coast Transit - Ventura 805-643-3158
- Oxnard 805-487-4222
- Heritage Valley Dial-A-Ride 805-933-2267
- VCTC Bus Passes 800-438-1112
- Oxnard Transit Center 805-487-4222
- Camarillo City Hall 805-388-5300
- Santa Paula City Hall 805-933-4201
- Fillmore City Hall 805-524-3701

CAMPGROUNDS/CAMPING

- County Park Information 805-654-3951
- State Park Information 800-444-7275/805-968-1033
- Fillmore - Kenny Grove - 823 N. Oak 805-524-0750
- Ojai - Lake Casitas - 11311 Santa Ana Rd 805-649-2233

- County Beach/Park Campgrounds (14 days maximum)
 - Ojai - Camp Comfort - 11969 N. Creek Rd 805-654-3951
 - Dennison Park - 7250 Santa Paula/Ojai Rd 805-654-3951
 - Santa Paula - Steedle Park 805-654-3951
 - Ventura - Emma Wood - Rincon Parkway, Hwy 1 805-654-8444
 - Faria Beach - 4350 W. PCH 805-654-3951
 - Foster Park - 438 Casitas Vista Rd 805-654-3951
 - Hobson Park - 5210 W. PCH 805-654-3951
 - Lake Casitas - 11311 Santa Ana Rd 805-649-2233
- State Beach Campgrounds
 - 916-445-9949
 - TTY 916-445-8952

CHILDREN'S SERVICES

- California Children's Services - VC HCA 805-981-5281
- Children's Crisis Team - 24-hour Hotline 1-866-431-2478
- Child Development Resources (CDR) (childcare, Head Start Preschool) 805-485-7878
- Children & Family Services (abuse/neglect, adoption, foster care)
 - 24-hour Hotline 805-654-3200
 - Children's Mental Health (access line) 800-671-0887
- County Schools Homeless Education Project 805-437-1522
- School on Wheels (tutoring/supplies) 800-923-1100

CITIZENSHIP/IMMIGRATION

- El Concilio Del Condado - 301 S. St, Oxnard 805-486-9777 x232
- U.S. Citizenship and Immigration Services 800-375-5283
- TTY 800-767-1833

DENTAL

- Children - referrals from CHDP 805-981-5291
- Children's Resource Program - 199 Figueroa St 805-641-9802
- Clinicas Del Camino Real (fee for services)
 - Oxnard - 650 Meza St 805-483-3600
 - Santa Paula - 500 E. Main St 805-933-0895
 - Ventura - 200 S. Wells Rd 805-659-0560
- Oxnard Dental Group 805-278-9499
- Salvation Army Free Clinic - 622 W. Wooley Rd, Oxnard (Call for appointment) 805-483-9235

DISABLED PERSONS

- Department of Rehabilitation
 - 1701 Pacific Ave, #120, Oxnard 805-385-2400
 - Independent Living Resource Center
 - 1802 Eastman Ave, #112, Ventura 805-650-5993
 - Voice/Fax (TTY) 805-650-5993 Video phone 805-256-1036
- Tri-Counties Regional Center
 - 2401 E. Gonzales Rd, #100, Oxnard 805-485-3177

DOMESTIC VIOLENCE

- Adult & Child Abuse & Neglect - 24-hour Hotline 805-654-3200
- 24-hour Bilingual Hotline 800-300-2181
- Coalition for Family Harmony 805-654-1111
- Interface Children & Family Services 800-636-6738

805-385-1800

County of Ventura Human Services Agency • Homeless Services Program

DROP-IN SERVICES

- Community Action Program of Ventura County
 - 621 Richmond Ave, Oxnard 805-436-4000
 - Ojai Community Assist Program - 108 Fox St, Ojai 805-640-3320
 - One-Stop Centers 805-652-6694
 - Camarillo - Church of the Nazarene
 - 280 Antonio Ave (4th Thursday, 8:30-11 a.m.)
 - Oxnard - The Salvation Army, 622 W. Wooley Rd (Wednesday, 8:30-11 a.m.)
 - Santa Paula - Buen Pastor Church, 1029 E. Santa Paula St (Friday, 9-11:30 a.m.)
 - Ventura - Public Health Auditorium, 3147 Loma Vista (10 a.m.-12:30 p.m.)
 - River Haven - Harbor Blvd & Olivias Park Dr (Monday, 12:30-3:30 p.m.)

EMPLOYMENT/JOB TRAINING

- Applicant's Job Center - 2901 N. Ventura Rd, Oxnard 805-204-
- Center for Employment Training (CET) - 761 S. St, Oxnard 805-487-9821
- Community Action of VC - 621 Richmond, Oxnard 805-436-2400
- Employment Development Department (EDD)
 - 2901 N. Ventura Rd, Oxnard 805-288-8400
 - Employee Aptitude & Placement
- 660 N. Ventura Ave, Ventura (Monday-Friday, 9-11 a.m.) 805-648-5868
- Fillmore Active Adult Center 805-933-8300
- 533 Santa Clara St, Fillmore 805-981-
- Goodwill Industries - 130 Lombard St, Oxnard
- 0130
- Job Corps (16-24-year olds) 800-733-5627
- Ojai Community Assist Program - 108 Fox St, Ojai 805-640-3320
- Santa Clara Valley Community Service Center
 - 725 E. Main St, #301, Santa Paula 805-933-8300
 - Unemployment Benefits Claims - English 800-300-5616
 - Spanish 800-326-8937
- Ventura Community Service Center - 4651 Telephone Rd 805-454-
- Workforce Development Board (WDB)
 - 2901 N. Ventura Road, 3rd floor, Oxnard 805-477-5306

FOOD

- (also see Meals)
- Food Share - countywide food pantry information 805-983-
- Community Action of VC - 621 Richmond, Oxnard 805-436-4000
- Community Assistance of Santa Paula (CASP)
 - 133 N. Mill St (Monday) 805-525-8880
 - Community Assist Program - 108 Fox St, Ojai 805-640-
- Spirit of Santa Paula (call first) 805-340-5025
- WIC (women, infants, children) Toll Free 800-781-4449

HOMELESS & HOUSING SERVICES

- Cabrillo Economic Development Corporation (affordable housing)
 - 702 County Square Dr, #100, Ventura 805-659-3791
 - 287 Riverpark Blvd, Oxnard 805-485-2260
- Community Action Program - 621 Richmond, Oxnard 805-436-4000
- Housing Rights Center 800-477-5977
- Homeless Prevention & Rental Deposit 805-385-1800
- Many Mansions - Housing Central 805-497-0344
- Mental Health Housing/STAR 866-998-2243

- Project Understanding - 7734 Johnson Dr, #E 805-652-1326
- St. Vincent de Paul 805-487-
- 1558 • The Salvation Army, Safe Sleep (Ventura) 805-
- 648-5932 • Turning Point Foundation (mentally ill) 805-652-2151
- 536 E. Thompson Blvd, Ventura

HOUSING AUTHORITIES

- (No emergency housing provided)
- Housing Rights Center 800-477-5977
- Area Housing Authority (Ojai & unincorporated areas)
- 1400 W. Hillcrest Dr, Newbury Park 805-480-9991
- Oxnard Housing Authority - 435 S. D St 805-385-8041
- Public Housing 805-385-8114
- Section 8 805-385-8097
- Port Hueneeme Housing Authority
 - 250 N. Ventura Rd 805-986-6527
- Santa Paula Housing Authority
 - 15500 W. Telegraph Rd, #811 805-525-3339
- Ventura Housing Authority
 - Public Housing - 995 Riverside St 805-648-5008
 - Section 8 - 1122 Snapdragon St, #100 805-647-5990

INFORMATION AND REFERRAL

- Dial 2-1-1 for information 24 hours/7 days/week about Community Resources near you
- Area Agency on Aging (seniors) 805-477-7300
- County of Ventura 800-660-5474
- Homeless Services Program Information 805-385-1800

LAUNDRY

- Community Action Program of Ventura County
 - 621 Richmond, Oxnard (Monday & Friday only, 8 a.m.-noon) 805-436-4000
- Community Assistance Program
 - 108 Fox St, Ojai 805-640-3320
- Laundry of Love - Ventura County
 - Mission Plaza - 110 N. Olive - 1st Tuesday, 5:30-8 p.m.
 - Quik Wash - 9298 Telephone Rd - 2nd Tuesday, 5-7 p.m.
 - 2611 E. Thompson Blvd. - 3rd Tuesday, 5:30-8 p.m.
- Turning Point Foundation (mentally ill)
 - 536 E. Thompson Blvd, Ventura 805-652-2151

LEGAL SERVICES

- California Bar Association - Legal Clinic - (family law/tenant/landlord/bankruptcy) (Monday-Friday) 805-650-7599
- California Rural Legal Assistance
 - 338 S. A St, Oxnard 805-483-8083
 - Grey Law (60 yrs+) 805-658-2266
- Housing Rights Center 800-477-5977
- Jewish Family Services - 740 E. Main St, Via 805-641-6565
- Self-Help Legal Access Center Ventura
 - 800 S. Victoria Ave, Rm #106, Ventura 805-289-8724