

# PROJECT PLACE

## RENTAL LISTINGS - JUNE 2026



### IN THIS GUIDE:

- Affordable Housing Providers.....p. 3
- Affordable Rental Listings.....p. 5
- Senior & Veteran Rental Listings.....p. 21
- Housing Resources & Programs.....p. 42

### ABOUT THE HOUSING RIGHTS CENTER

The Housing Rights Center (HRC) is the nation's largest nonprofit civil rights organization dedicated to promoting and securing fair housing. HRC provides residents of **Los Angeles and Ventura Counties** with FREE:

- Housing Rights Counseling
- Discrimination Investigation & Enforcement
- Outreach and Public Education

### NEED HELP NOW?

Call HRC's Housing Rights Hotline to speak with a trained Housing Counselor about your landlord-tenant rights and responsibilities.

- Toll-free hotline: **1-800-477-5977**
- TTY: 1-213-201-0867
- Email: [info@housingrightscenter.org](mailto:info@housingrightscenter.org)

### PROJECT PLACE TOOLKIT

Free guide to use when applying for housing (housing search resources, basics of renting, and source of income discrimination).



Download your copy: [housingrightscenter.org/project-place-toolkit](https://housingrightscenter.org/project-place-toolkit)

### WALK-IN CLINICS

HRC also offers free landlord-tenant housing clinics in Alhambra, Burbank, Carson, El Monte, Inglewood, Lakewood, Palmdale, and Ventura: [housingrightscenter.org/clinics](https://housingrightscenter.org/clinics).

**WORKSHOPS** Register for FREE at [www.housingrightscenter.org/workshops](https://www.housingrightscenter.org/workshops).



Want to read Project Place online? Sign up at [www.housingrightscenter.org](https://www.housingrightscenter.org) to get the new issue in your email every month!

# Apartment and House Hunter's Checklist

Before you start looking for a place, get organized and decide: 1) how much you can afford to pay, 2) what your space and living needs are, 3) how long you plan on staying, and 4) what sort of area you want to live in.

When you find a potential unit be sure that the answers to these questions are covered in or added to your rental agreement. And don't leave without a copy of any amendments-it's worth a detour to the local copy center.

1. When is the unit available? If the move-in date is impractical for you, ask if it's negotiable so that you don't pay for unoccupied time. Is the apartment currently occupied? Is the lease agreement month-to-month or year-to-year?
2. How much are rent and deposit fees, and when is rent due? If mailed, does the rent need to be received or postmarked by the due date?
3. Is there a grace period after the monthly rental due date? When is your payment considered late, and is there a penalty charge for late payment?
4. What are the terms for renewing the lease? Can you move into an apartment you like better if one becomes vacant? What are the conditions if you have to move before the lease expires?
5. Are pets allowed?
6. Are any utilities included in your agreement?
7. Are you allowed to have roommates? What is the policy on subletting?
8. Can you paint the walls or make other decorating changes?
9. Will you be responsible for any property maintenance? Is there an office onsite, or a 24-hour phone number in case of an emergency?
10. Is the unit a legal dwelling?

## **Application Screening Fee**

A landlord can charge you an application screening fee to cover his/her out-of-pocket expenses for obtaining and processing your application. The application fee cannot be more than the landlord's actual out-of-pocket costs, and effective in 2024, can never be more than \$62.02. The landlord must give you an itemized receipt showing his/her expenses and must return any unused portion of the fee (for example, if the landlord did not check your references).

## **A Checklist of Things to Inspect**

Here is a checklist of things you should look for when inspecting a rental property. All requirements mentioned are contained in the California Civil Code. Please slow down and look carefully before you sign on the dotted line.

- |   |  |
|---|--|
| <input type="checkbox"/> Structure (floors, walls, ceiling, foundation) | <input type="checkbox"/> Signs of insects, vermin, and rodents |
| <input type="checkbox"/> Plumbing                                       | <input type="checkbox"/> Wiring and electricity                |
| <input type="checkbox"/> Bathroom                                       | <input type="checkbox"/> Fire safety                           |
| <input type="checkbox"/> Kitchen  | <input type="checkbox"/> Trash and garbage receptacles         |
| <input type="checkbox"/> Hot water                                      | <input type="checkbox"/> General cleanliness of the area       |
| <input type="checkbox"/> Heat   | <input type="checkbox"/> Locks                                 |
| <input type="checkbox"/> Light and ventilation                          | <input type="checkbox"/> Earthquake safety                     |

## **Get all Promises in Writing**

Whatever promises the landlord makes, you should be aware that it is very common for vague, oral agreements to lead to misunderstanding, bitterness, and financial loss. The time to protect yourself is now. Get all promises in writing. Make two copies, one for the landlord and one for your own file.

## **The Landlord-Tenant Checklist**

Another good self-protection device for both landlords and tenants involves taking an inventory of the condition of the premises at the time you move in, and then again when you move out. This means no more than making a brief written record of the condition of each room and having it signed by you and your landlord. Not only does the inventory give both an accurate record of the condition of the unit, but the act of making it provides a framework for communication and the resolution of potential disputes about security deposits when you move out. Contact the Housing Rights Center to receive a sample checklist. It is also a good idea to take pictures of your unit when you move in and move out.

If you have any questions about your rights and responsibilities as a tenant or landlord please contact the Housing Rights Center at (213) 387-8400 or (800) 477-5977 or e-mail us at [info@housingrightscenter.org](mailto:info@housingrightscenter.org).

# AFFORDABLE HOUSING PROVIDERS

This section lists companies and organizations that have multiple properties throughout Los Angeles County or Ventura County. Contact an organization for information on their properties and to apply.



## Affordable Housing Developers

These are some organizations that build affordable housing in the Los Angeles and Ventura areas. Visit their websites or contact them to stay up to date on their new projects and open waitlists.

### Los Angeles County

#### **Abode Communities**

1149 S. Hill Street, Suite  
700 Los Angeles, CA 90015  
(213) 629-2702  
[www.abodecommunities.org](http://www.abodecommunities.org)

#### **Caring Housing Ministries**

3204 Rosemead Blvd., Suite 100  
El Monte, CA 91731  
(626) 300-2400  
[www.chm.org](http://www.chm.org)

#### **Community Corporation of Santa Monica**

1423 Second Street Suite B  
Santa Monica, CA 90401  
(310) 394-8487  
[www.communitycorp.org](http://www.communitycorp.org)

#### **A Community of Friends**

3701 Wilshire Blvd., Suite  
700 Los Angeles, CA 90010  
(213) 480-0809  
[www.acof.org](http://www.acof.org)

#### **East LA Community Corporation**

2917 E 1st Street, Suite 101  
Los Angeles, CA 90033  
(323) 269-4214  
[www.elacc.org](http://www.elacc.org)

#### **Hollywood Community Housing Corporation**

5020 Santa Monica Blvd.  
Los Angeles, CA 90029  
(323) 469-0710  
[www.hollywoodhousing.org](http://www.hollywoodhousing.org)

#### **Homes for Life Foundation -**

*Permanent supportive housing/or people  
with chronic mental disabilities*  
8939 S. Sepulveda Boulevard, Suite  
460 Los Angeles, CA 90045  
(310) 337-7417  
[www.homesforlife.org](http://www.homesforlife.org)

#### **LINC Housing Corporation**

555 E. Ocean Blvd., Suite 900  
Long Beach, CA 90802  
(562) 684-1100  
[www.linchousing.org](http://www.linchousing.org)

#### **Menorah Housing Foundation**

*Senior Housing*  
10991 W. Pico Blvd.  
Los Angeles, CA 90064  
(310) 477-1476  
[www.menorahhousing.org](http://www.menorahhousing.org)

#### **Mercy Housing - California**

1500 South Grand Ave. Suite 100  
Los Angeles, CA 90015  
(866) 338-0557  
[www.mercyhousing.org/california](http://www.mercyhousing.org/california)

#### **SRO Housing Corporation**

*Housing/or homeless and low-  
income individuals*  
1055 W. 7th St. Suite 3250  
Los Angeles, CA 90017  
(213) 229-9640  
[www.srohousing.org](http://www.srohousing.org)

#### **West Hollywood Community Housing Corporation**

7530 Santa Monica Boulevard, Ste. #1  
West Hollywood, CA 90046  
(323) 650-8771  
[www.whchc.org](http://www.whchc.org)

### Ventura County

#### **Cabrillo Economic Development Corporation**

702 County Square Drive  
Ventura, CA 93003  
(805) 659-3791  
[www.cabrilloedc.org](http://www.cabrilloedc.org)

#### **Many Mansions**

1425 E. Thousand Oaks Blvd.  
Thousand Oaks, CA 91362  
(805) 497-0344  
[www.manymansions.org](http://www.manymansions.org)

# AFFORDABLE RENTAL LISTINGS

This section lists contact information for properties with available affordable units. Contact a property directly for more information and to apply.



# CENTRAL AVE APARTMENTS NOW LEASING

## Affordable Family Housing & Supportive Housing for Transition Age Youth

### PROPERTY LOCATION

8923 S. Central Avenue, Los Angeles, CA 90002

### STUDIO, 1- & 2-BEDROOM RENTAL APARTMENTS

28 Affordable Units, Leased by **Abode Communities**

Applications accepted in person, via mail, or online at [accesshousingla.org](http://accesshousingla.org). Visit or send rental application to Westmont Vista: 1763 W. Imperial Hwy. Los Angeles, CA 90047. Leasing office is open Monday – Friday from 9AM to 5PM.

30 Supportive Units, Leased by **LAHSA CES**

Contact **LAHSA** at 213-797-4568 or [cesmatching@lahsa.org](mailto:cesmatching@lahsa.org)

### APPLICATION PERIOD

June 5, 2026 - July 6, 2026. Each eligible applicant will be assigned a lottery number at time of submission. A virtual lottery will be held on July 20, 2026, and applications will be processed by lottery number. All eligible applicants will be included in the lottery.

### PROPERTY AMENITIES

Bicycle Parking, Community Room, Courtyard, Coin-Operated Laundry, Onsite Property Management, and Resident Services

### CONSTRUCTION COMPLETE

Anticipated Summer 2026



Central Avenue Apartments  
is owned and operated by



A Place to Belong

Valesta Jones  
Community Manager

(213) 225-2829

TTY/TDD: 711

[centralave@abodecommunities.org](mailto:centralave@abodecommunities.org)



LEED

## Approximate Monthly Rent

Max Area Median Income	Income Limits by # of People in Household				
	1	2	3	4	5
20%	\$23,320	\$26,660	\$29,980	\$33,320	35,980
30%	\$34,980	\$39,990	\$44,970	\$49,980	\$53,970
40%	\$46,640	\$53,320	\$59,960	\$66,640	\$71,960

Housing affordability determined by California Tax Credit Allocation Committee. Rent and income limits are updated annually and subject to change.

## Accessible Units

Unit Size	Mobility	Hearing or Visual (H/V)	Included in Lottery
Studio	1	1	0
1BR	4	3	2 - Mobility 1 - H/V
2 BR	4	2	3 - Mobility 2 - H/V

## Occupancy Standards

Unit Size	# HH Members
STUDIO	1
1 BR	1-3
2 BR	3-5
Unit Size	Sq Ft
STUDIO	425
1 BR	545
2 BR	689

Central Avenue Apartments  
is owned and operated by



A Place to Belong

Valesta Jones  
Community Manager

(213) 225-2829

TTY/TDD: 711

[centralave@abodecommunities.org](mailto:centralave@abodecommunities.org)



LEED

# A Modern Urban Community for Today's Angelenos

## The Parkline

AT 1457 NORTH MAIN STREET



1457 North Main Street ≡ Los Angeles, CA 90012

### Brand-new, transit-rich DTLA homes with income-restricted rents designed for moderate-income households, including healthcare professionals.

The Parkline is a new, regionally connected residential community located along North Main Street, offering thoughtfully crafted studios and one-bedroom homes. Built for working Angelenos, Parkline brings contemporary design, urban convenience and smart living together in one of Los Angeles's most dynamic neighborhoods.

- Brand-new homes with **efficient, modern layouts**
- **Secure entry, modern amenities**, fitness center and restaurant
- **High-quality construction** delivered through innovative building methods
- **Designed to meet the needs of today's workforce**



#### DTLA Energy

Just minutes from the vibrant heart of Downtown Los Angeles.



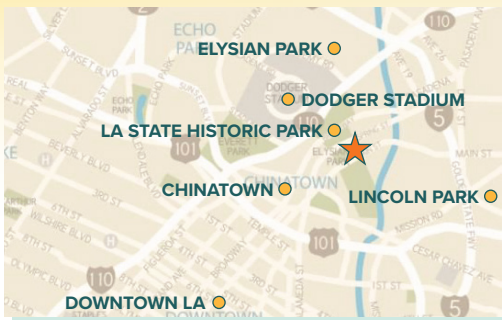
#### Natural Beauty

Unmatched access to open space, trails and robust recreational options.



#### Skyline Views

Sweeping panoramas of Los Angeles and its signature skyline.



### Downtown Living Without Downtown Luxury Pricing

The Parkline places residents at the crossroads of Chinatown, Downtown LA, Solano Canyon and Lincoln Heights, with easy access to major highways and transit lines.

For inquiries, partnership opportunities or broker engagement

**213-454-0790**

 **Thrive Living**

[www.theparklinemain.com](http://www.theparklinemain.com)  
[inquiries@theparklinemain.com](mailto:inquiries@theparklinemain.com)



**EAH HOUSING**

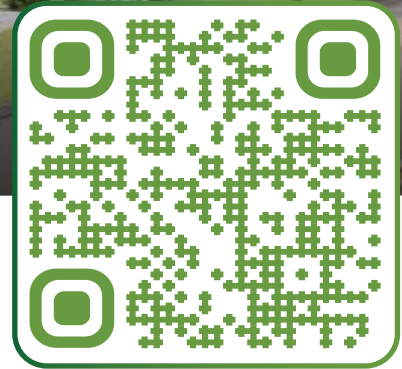
# Imagine Village II

43445 East Sahuayo St., Lancaster, CA 93535



## Now Leasing! Your New Home Awaits.

Imagine Village II is a vibrant affordable housing community in the heart of Lancaster. This three-story development features 80 modern studio, one-, two-, and three-bedroom apartment homes offering a thoughtfully planned layout. On-site services provided by Penny Lane Centers include case management, health care, and employment support. connection.



## APPLY ONLINE TODAY!

[EAHHousing.org/Imagine-Village-2](https://EAHHousing.org/Imagine-Village-2)

### CONTACT / Management Office

43445 E. Sahuayo St., Lancaster, California 93535  
Phone: (661) 310-3427, California Relay Service: 711  
Web: [EAHHousing.org/Imagine-Village-2](https://EAHHousing.org/Imagine-Village-2)  
Email: [IV2-Management@EAHHousing.org](mailto:IV2-Management@EAHHousing.org)

**Disclaimer:** Paper applications are available upon request. Please call the number listed above to request one. Completed paper applications can be submitted by mail to the address provided.

### APARTMENT FEATURES

- Balcony or patio
- Energy-efficient appliances

### COMMUNITY AMENITIES

- Community rooms
- Community garden
- Computer room
- Playground
- Dog run

### UTILITIES & PETS

- Service and emotional support animals only.

### NEARBY SERVICES

- Bus line / 2 mins.
- Restaurants / 4 mins.
- Grocery store / 5 mins.



CA Lic. #00853495



## MOVE-IN QUALIFICATIONS

Unit Type Area Medium Income (AMI)	Minimum Annual Income	Maximum Income Limit	Occupancy	Rent	Security Deposit
Studio 30% AMI	\$23,850	\$31,800	1	\$795	\$795
		\$36,360	2		
One-Bedroom 30% AMI	\$25,560	\$31,800	1	\$852	\$852
		\$36,360	2		
		\$40,890	3		
Two-Bedroom 30% AMI	\$30,660	\$36,360	2	\$1,022	\$1,022
		\$40,890	3		
		\$45,450	4		
		\$49,080	5		
Three-Bedroom 30% AMI	\$35,430	\$40,890	3	\$1,181	\$1,181
		\$45,450	4		
		\$49,080	5		
		\$52,710	6		
		\$56,340	7		
Studio 50% AMI	\$39,750	\$53,000	1	\$1,325	\$1,325
		\$60,600	2		
One-Bedroom 50% AMI	\$42,600	\$53,000	1	\$1,420	\$1,420
		\$60,600	2		
		\$68,150	3		
Two-Bedroom 50% AMI	\$51,090	\$60,600	2	\$1,703	\$1,703
		\$68,150	3		
		\$75,750	4		
		\$81,800	5		
Three-Bedroom 50% AMI	\$59,070	\$68,150	3	\$1,969	\$1,969
		\$75,750	4		
		\$81,800	5		
		\$87,850	6		
		\$93,900	7		
Studio 60% AMI	\$47,700	\$63,600	1	\$1,590	\$1,590
		\$72,720	2		

\* Rents and Deposits are Subject to Change





## MOVE-IN QUALIFICATIONS

Unit Type Area Medium Income (AMI)	Minimum Annual Income	Maximum Income Limit	Occupancy	Rent	Security Deposit
One-Bedroom 60% AMI	\$51,120	\$63,600	1	\$1,704	\$1,704
		\$72,720	2		
		\$81,780	3		
Two-Bedroom 60% AMI	\$61,320	\$72,720	2	\$2,044	\$2,044
		\$81,780	3		
		\$90,900	4		
		\$98,160	5		
Three-Bedroom 60% AMI	\$70,890	\$81,780	3	\$2,363	\$2,363
		\$90,900	4		
		\$98,160	5		
		\$105,420	6		
		\$112,680	7		

\* Rents and Deposits are Subject to Change

## FAIR HOUSING & ACCESSIBILITY INFORMATION

Accessible units are available for occupancy by persons with mobility impairments or hearing, vision, or other sensory impairments. Individuals requiring accessible units may indicate their need on the application, via email, phone call or by mailing the request. Imagine Village II will take reasonable nondiscriminatory steps to maximize the utilization of such units by eligible individuals.

This housing is offered without regard to race, color, religion, sex, gender, gender identity and expression, familial status, national origin, citizenship status, immigrant status, primary language, marital status, ancestry, age, sexual orientation, disability, source of income (including receipt of Section 8 and other similar vouchers), genetic information, military or veteran status, arbitrary characteristics, or any other basis currently or subsequently prohibited by law. Individuals with a disability have the right to ask for and receive reasonable accommodations and to request auxiliary aids.

A person with a disability may request a reasonable accommodation (a reasonable change in policies), a reasonable structural modification, an accessible unit or the provision of auxiliary aids and services, in order to have equal access to a housing





**EAH HOUSING**

# Imagine Village II

43445 East Sahuayo St., Lancaster, CA 93535

program. If you or anyone in your household has a disability, and because of that disability requires a specific accommodation, modification or auxiliary aids or services to fully use our housing services, you may contact our staff for a reasonable accommodation form. The use of the property's Reasonable Accommodation Form is not required. You may provide a letter or document from your third party profession certifying your disability and accommodation needs.

## **CONTACT / Management Office**

**43445 E. Sahuayo St., Lancaster, California 93535**

**Phone: (661) 310-3427, California Relay Service: 711**

**Web: [EAHHousing.org/Imagine-Village-2](http://EAHHousing.org/Imagine-Village-2)**

**Email: [IV2-Management@EAHHousing.org](mailto:IV2-Management@EAHHousing.org)**



CA Lic. #00853495



## PARKSIDE APARTMENTS

Now Leasing  
400 w 9th St. Los Angeles, CA 90015

---

Individuals with a Disability have the right to request and receive reasonable accommodations, including the right to ask for auxiliary aids and services, communications in alternative formats. If you or anyone in your household has a disability and needs any of these things or another type of accommodation to live at Parkside Apartments and use our services, then contact Trillium Property Management staff to communicate your needs.

Applicants must first complete a pre-application through [Accesshousingla.org](https://Accesshousingla.org)

You may also request a property application by emailing [Parkside@trillium-pm.com](mailto:Parkside@trillium-pm.com).

Please note: Submission of a pre-application through Access Housing LA is required prior to processing.

This housing is offered without regard to race, color, religion, sex, gender, gender identity and expression, familial status, national origin, citizenship status, primary language, marital status, ancestry, age, sexual orientation, disability, source of income (including receipt of Section 8 and other similar vouchers), genetic information, military or veteran status, arbitrary characteristics, or any other basis currently or subsequently prohibited by law.

---

### Property Management Contact Information:

Candy Nunez

Property Manager

Trillium Property Management

Email: [Candyn@trillium-pm.com](mailto:Candyn@trillium-pm.com)

213-221-7158

TTY/TDD: 711





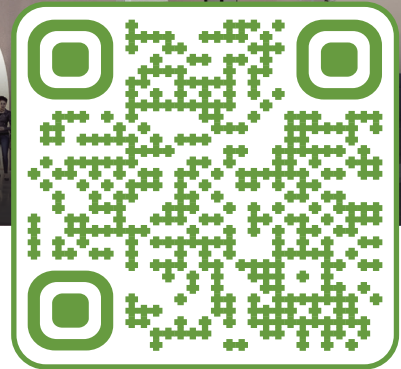
**EAH HOUSING**

# AGAVE

2052 Lake Avenue, Altadena, CA 91001



**Where New Beginnings Take Root  
Accepting Applications Now!**



Agave is a brand-new affordable housing community offering 58 apartments along Altadena's Lake Avenue commercial corridor. Apartment features include modern, energy-saving appliances, sleek window coverings, and spacious walk-in closets. Community amenities include a light-filled community room and inviting gathering areas, on-site laundry facilities, dedicated bicycle parking, and on-site parking. Here, every detail supports stability, community, and a fresh start. Construction is set to be completed in Winter 2026.

## APPLY ONLINE TODAY!

### CONTACT / Management Office

2052 Lake Avenue, Altadena, CA 91001

Phone: (626) 240-1520, California Relay Service: 711

Web: [EAHHousing.org/Agave](http://EAHHousing.org/Agave)

Email: [AGA-Management@EAHHousing.org](mailto:AGA-Management@EAHHousing.org)

[EAHHousing.org/Agave](http://EAHHousing.org/Agave)

### APARTMENT FEATURES

- Energy-efficient appliances
- Walk-in closet

### COMMUNITY AMENITIES

- Community room
- Bicycle storage
- Community space
- On-site laundry
- On-site parking

### UTILITIES & PETS

- Water, sewer, and garbage included in rent.

### NEARBY SERVICES

- Bus line / 2 mins.
- Restaurants / 1 min.
- Grocery store / 1 min.



CA Lic. #00853495

## MOVE-IN QUALIFICATIONS

Unit Type Area Medium Income (AMI)	Minimum Monthly Income	Maximum Income Limit	Occupancy	Rent*	Security Deposit
One-Bedroom 30% AMI	N/A	\$31,800	1	30% of Adjusted Income	\$500
		\$36,360	2		
		\$40,890	3		
		\$45,450	4		

\* Rents and Deposits are Subject to Change

## POPULATION & ADA UNIT DESIGNATION

Population	Number of Units
Homeless	37
Chronically Homeless	18

### Information for Applicants with Physical or Sensory Disabilities

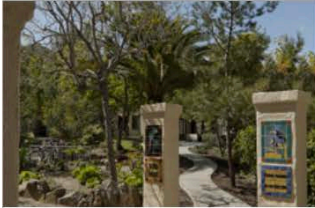
All fifty-seven (57) rental units are fully accessible for residents with mobility impairments, including sixteen (17) ADA units: ten (10) mobility units and seven (7) sensory units. Mobility unit features include: wheelchair-accessible doorways in units and common areas of the property, wheelchair-accessible entry door viewers, ADA-compliant bathtubs, low counter tops, and ADA-compliant appliances. In addition, all units are fully accessible or adaptable for residents with sensory impairments upon request. Sensory-accessible features include: doorbells with visual and audible signals and fire and carbon monoxide alarms with visual and audible alerts.

ADA Unit Designation	Mobility	Sensory	Total
One-Bedroom	10	7	17

# Thomas Safran & Associates

(310) 820-4888 / TTY: (800) 855-7100

No Age Restrictions



**Bird Park**  
234 Bird Park Road  
Avalon, CA  
(310) 510-2471



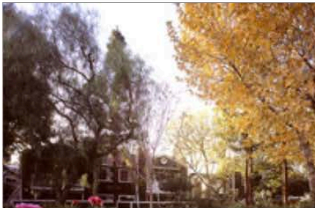
**Drake Manor**  
200 West Drake Street  
Pomona, CA  
(909) 593-9615



**Lark Ellen Village**  
1350 E. San Bernardino Road  
West Covina, CA  
(626) 732-3939



**Rancho California**  
29210 Stonewood Road  
Temecula, CA  
(951) 676-5066



**Strathern Park**  
11111 Strathern Street  
Sun Valley, CA  
(818) 768-4424



**Strathern Park East**  
11047 Strathern Street  
Sun Valley, CA  
(818) 768-4424



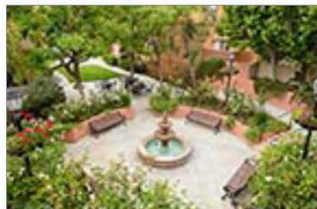
**Sunnyside Villas**  
5271 E. Kings Canyon Road  
Fresno, CA  
(559) 251-2531



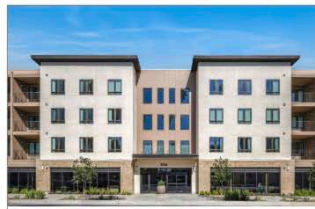
**Veterans Village of  
Glendale**  
331 Salem Street  
Glendale, CA  
(818) 956-7970



**Villa Ramona**  
13030 Ramona Blvd.  
Baldwin Park, CA  
(626) 814-3455



**Villaggio**  
555 E. Carson Street  
Carson, CA  
(310) 847-7737



**Vista Terrace**  
8134 Van Nuys Boulevard  
Los Angeles, CA  
(818) 962-4181

Property Name	Waitlist	Population	Address	City	Zip Code	La...er Area	# of Units	Unit Size	Contact and Almication Information
Plaza on Main			333 W Main St	Alhambra	910801	San Gabriel Valley		1Br	(626) 289-5800
Azusa Apartments			805 S. Cerritos Ave.	Azusa	91702	San Gabriel Valley			(323) 930-2300
Fourth Street Apartment Homes			1562W.4thSt.	Baldwin Park	91706	San Gabriel Valley		1Br, 2Br, 3Br, 4Br	Juan Rubio, Acqua Properties (818) 439-6665
SHARE! - DJ's Path House	Open		Cross Streets: Clark Ave. & Rosecrans Ave.	Bellflower					1-877-742-7349
Walnut Street Apartments			9823 Walnut St.	Bellflower	90706		30		562-204-5466; Available units posted at www.apartments.com
Arbor Green			21227 S Figueroa St	Carson	90745				(714) 282-2520
Carson Arts Colony	Open		21205MainStrcct	Carson	90745		46	1 Br, 2Br, 3Br	Escmeralda (424) 318-1770 www.carsonartsapartments.com; Application available through email or onsite.
Via425 Apartments			401 E Carson St	Carson	90745				Ashley(424) 477-5047; www.via425.com
Courier Place			111 S College Ave	Claremont	91711	San Gabriel Valley		1Br for Seniors (62+); 2Br and 3Br for all ages	(909) 624-8589
SHARE! - Mary's Blessings	Open		Cross Streets Rosecrans & Long Beach Blvd.	Compton					1-877-742-7349
HFLPalms Court	CES referral only	Chronically Wlhouseedor chronically with mental illness	3819-3821 Motor Ave	Culver City	9032	West Los Angeles	21	1Br	David Cuezon hflpalmscourt@sbcglobal.net (866) 5069746 or (310)2026937
Homeward Bound		Persons with developmental disabilities or low income	6000 Canterbury Dr	Culver City	90230	West Los Angeles		1Br	(310) 988-4000
Tilden Terrace			11042-11058 Washington Blvd, Culver City, CA	Culver City	90232	West Los Angeles	33	Multi-Family: 1br, 2br,3br	T: 213.627.9611, (310) 836-1300; E: lainfo@lifund.org
La Quinta			38301 11thSt	East Palmdale	93550	Antelope Valley		1Br,2Br	Call managerat(661) 265-9911 to make apointment
Longhorn Pavilion			36523 25th St	East Palmdale	93550	Antelope Valley		2Br,3Br	(661) 266-2997
Palmdale Desert Club Aots			37902 N 20th St	East Palmdale	93550	Antelope Valley		2Br,3Br	(818) 789-5550; (661) 273-7731
Baldwin Rose Veterans Apartments		Veterans	9953 Rose Ave	El Monte	91731	San Gabriel Valley		1Br	(909) 448-2688
Blessed Rock of El Monte			3348 Tyler Ave	El Monte		San Gabriel Valley		1Br	(626) 448-8589; (626) 448-2688
Cherrylee Gardens			11620 Cherrylee Dr	El Monte	91732	San Gabriel Valley		1Br	626) 443-4646; (866) 933-2293 ext 20590
El Monte Veterans Village		Unhoused, Veterans	11240 Ramona Blvd	El Monte	91731	San Gabriel Valley		1Br	(866) 624-8589
El Monte Veterans Village		Unhoused, Veterans	11240 Ramona Blvd.	El Monte	91731			1Br	(626) 377-9901
El Monte Veterans Village			11338 McGirk St.	El Monte				Multi-family	(626) 448-7882
El Monte Veterans Village			11154 BonwoodRd	El Monte				Multi-family	(626) 448-7882
El Monte Veterans Village			11332 & 11332 1/2 Coffield Ave	El Monte				Multi-family	(626) 448-7882
El Monte Veterans Village			3850 Penn Mar Street	El Monte				Multi-family	(626) 448-7882
El Monte Veterans Village			4400, 4402, 4406 Maxson Rd.	El Monte				Multi-family	(626) 448-7882
El Monte Veterans Village			11338 McGirk St	El Monte		San Gabriel Valley			(626) 448-7882
El Monte Veterans Village			1154 Bonwood Rd	El Monte		San Gabriel Valley			(626) 448-7882
El Monte Veterans Village			11332 & 11332 1/2 Cotfield Ave	El Monte		San Gabriel Valley			(626) 448-7882
El Monte Veterans Village			3850 Penn Mar St	El Monte		San Gabriel Valley			(626) 448-7882
El Monte Veterans Village			4400, 4402, 4406 Maxson Rd	El Monte		San Gabriel Valley			(626) 448-7882
El Monte Veterans Village			10562 Santa Fe Dr	El Monte		San Gabriel Valley			(626) 478-0760
El Monte Veterans Village			5004 Farago Ave.	El Monte-Temple City	91780			1Br	(626) 350-6139
El Monte Veterans Village			5004 Farago Ave	El Monte-Temple City	91780	San Gabriel Valley			(626) 377-9901
SHARE! - House of Jackie Hart Village	Open		Cross Streets Normandie Ave. & W Redondo Beach Blvd. 6941 Owensmouth Avenue	Ga, dcna Canoga Park	91303	San Fernando Valley		1 Br, 2Br, 3Br	1-877-742-7349 (818) 704-5983
SHARE! - Cerise House	Open		Cross Streets: 135th St. & Cerise Ave.	Hawthorne					1-877-742-7349
PATH Villas Eucalyptus			240WLimcSt	Inglewood	90301				714-221-5611
Arbor Fields Apartments			530 W Jackman St	Lancaster	93534			1 Br, 2Br, 3Br	(661) 942-0026
Arbor Fields Apartments			530 W Jackman St	Lancaster	93534	Antelope Valley		1Br, 2Br, 3Br	(661) 942-0026
Cedar Ridge Apartments	Open		2105 EastAvenue]-8	Lancaster	93534	Antelope Valley		3Br	(661)-723-7538
Imagine Village		Vcrrans	43517 SahuayoSt	Lancaster	93535	Los Angeles	64	Studio, 1 Br, 2Br, 3Br	https://housinglacounty.gov/pdfs/ImagineVillagePSHFlycr.pdf
Imagine Village			43517 Sahuayo St	Lancaster	93935	Antelope Valley		1Br	(661) 361-1819
Law-d Crest Apartments			531 W Jackman St	Lancaster	93534	Los Angeles		1 Br, 2Br, 3Br	C11 (661) 948-3422 to make an appointment.
Law-d Crest Apartments	Open Closed through 2021		531 W Jackman St	Lancaster	93534	Antelope Valley		1Br, 2Br, 3Br	(661) 948-3422 or (661) 9480905 (FAX)
Sierra Villa East			621 E. Avenue I	Lancaster	93535	Los Angeles		1Br	(661) 942-0663
Sierra Villa East			621 E. Avenue I	Lancaster	93535	Antelope Valley			(661) 942-0663
Village at Beechwood Apartments	Open		44063 Beech Ave.	Lancaster	93534	Antelope Valley		1Br, 2Br, 3Br	Christina (661) 948-7212; Application available onsite
SHARE! - Back to Basics	Open		Cross Streets Pacific Ave. & W52ndSt.	long Beach					1-877-742-7349
SHARE!-Court	Open		Cross Streets: E Anaheim St. & Gaviota Ave.	long Beach					1-877-742-7349
SHARE! - Inner Image 1704	Open		Cross Street: E Anaheim St. & Gaviota Ave.	long Beach					1-877-742-7349
SHARE! - Inner Image 1720	Open		Cross Streets PCH & Cherry	long Beach					1-877-742-7349
SHARE! - Joyful Solutions	Open		Cross Streets: J St. & N Criscal Court	long Beach					1-877-742-7349
SHARE! - New Magnolia House	Open		Cross Streets: Orange Ave. & E Artesia Blvd.	long Beach					1-877-742-7349
SHARE! - TUI Daisy	Open		Cross Street: E Anaheim St. & Gaviota Ave.	long Beach					1-877-742-7349
SHARE! - TUI Walnut	Open		Cross Streets: E Anaheim St. &GaviotaAvc.	long Beach					1-877-742-7349
SHARE! - Transforming Lives Norman	Open		Cross Streets: Anaheim St. & Alamitos Ave.	long Beach					1-877-742-7349
The Spark at Midtown			1900 long Beach Blvd	long Beach	90806				
Vista Del Puerto			1836 Locust Avenue	Lon" Beach					

Abbey Apartments			625 S San Pedro St Los Angeles, CA 90014	Lo Angeles	90014			Multi-Family and JB,	(1213) 683-0522
Aldrin Apartments			801 W 23rd St	Lo Angeles	90007			Multi-Family; Jin	(866) 933-2293 ext.35755 (323) 665-2736
Allesandro Street Apts.			1934 Allesandro St	Lo,Angelo,	90039			Disabled; lbr	(213) 628-1036
Alvarado Gardens			1800 N. Alvarado St	Lo,Angelo,	90026			Multi-Family; lbr; 2in,3in	(323) 660-0605, (650) 968-2660
Angelina Apartments			1336W Angelina St Los Angeles, CA 90026	Lo,Angelo,	90026			Multi-Family; 2br; 3in,4in	(213)482-1600
Angelus Plaza			2555 Hill St.	Lo,Angelo,	90012			Multi-Family; lbr	(866) 933-2293 ext.40357
Adams Square		Special needs	1563 South Arlington Ave.	Lo,Angelo,	90019				(323) 757-0670 Ex*105
Baldwin Hills Apartments			4063 Nicolet Ave.	Lo,Angelo,	90008			Multi-Family; lbr; 2in, 3in	(323) 227-5260
Baldwin Hills Apartments			4063 Nicolet Ave.	Lo,Angelo,	90008			Multi-Family; lbr; 2in, 3in	(323) 227-5260
Barnsdall Court Apartments			1632 Normandie Ave.	Lo,Angelo,	90027			Multi-Family; lbr	(323) 906-1604
Bartlett Hill Manor			625 North Bunker Hill Ave.	Lo,Angelo,	90012			Multi-Family; lbr	(213) 626-6555
Beverly City Lights			107 S. Carondelet St	Lo,Angelo,	90057			Jin, 2in, 3in	(213) 380-7935
Boyle Apartment,			427 S. Boyle Ave.	Lo,Angelo,	90033			Multi-Family; lbr; 2in	(213) 252-5997
Caroline Severance Manor		Special needs	2936 West Eight St.	Lo,Angelo,	90005			Multifamily	(213) 375-3906
Casa Rampart Apartments			512 S.Rampart Blvd.	Lo,Angelo,	90057			Studios	(213) 383-3525
Casanova Gardens				Lo,Angelo,	90012			213,	(323) 223-4198
Cesar Chavez Gardens			Gardens 555 W. Cesar E. Chavez	Lo,Angelo,	90012			2Br, 3Br, 4Br	(323) 437-9706
Chariton Apartments			2010 Chariton Apartment,	Lo,Angelo,	90034	Central Los Angeles	8	Studio, lbr, 2Br, 3Br, 4Br	(866) 933-2293 Ext 79425
Cochran City Light,			1315 South Cochran Ave.	Lo,Angelo,	90019			Multi-Family; 3br	(323) 936-6497
Coronel Apartments			2641 S Manhattan Pl.	Lo,Angelo,	90018				(213) 884-7172
Coronel Apartments			1601 N.Hobart Blvd.	Lo,Angelo,	90027				
Cuatro Vientos Apartments				Lo,Angelo,	90032			Multi-Family; 1-4 Bedroom	(323)221-1800
East LA North I			3333N.Mission Rd.	Lo,Angelo,	90031			Multi-Family; lbr; 2in	(323) 227-5260
Evergreen Village Apartments			420North Evergreen Ave.	Lo,Angelo,	90033			Multi-Family; lbr-4in	(323) 780-0612
Figueroa Place			1320 W Sunset Blvd.	Lo,Angelo,	90026			2Br, 4Br	
Flor01 Lofts			401E7thSt.	Lo,Angelo,	90014				Call SRHT at (213) 873-1680 or 213-683-0522 for availability
Grand&Venice			1500 S. Grand Ave.	Lo,Angelo,	90007			Multi-Family	(213)741-9374
Hancock Gardens Apt			303 S. Van Ness Ave.	Lo,Angelo,	90031			Multi-Family; 2br, 3in	(323)231-4174
Hollywood City Light,			127th St.	Lo,Angelo,	90044			Multi-Family; 2br, 3in, 4b	(323)779-1645
Harbour Community		Unhoused, Victims ofDV	12157 San Fernando Rd	Lo,Angelo,	91342	San Fernando Valley		lbr, 2Br	(818) 364-7039
Hoover Street Apartments		IDV/AIDS	962 S. Hoover St	Lo,Angelo,	90006			Multi-Family	(213) 387-7085
Imogen Housing			716 Imogene Ave.	Lo,Angelo,	90026			Multi-Family; 2br, 3in, 4in	(323) 660-6102
Innes Height,		disabled	1245 E. Innes Ave.	Lo,Angelo,	90026				(844) 349-8886
I.A. PRO			1011 N. Cumming St.	Lo,Angelo,	9033			Multi-Family; lbr; 2in	(323)221-0172
Las Margaritas Apartments			137 N. Soto St	Lo,Angelo,	90033			Multi-Family; Studio-3br	(323) 262-2453
Leland Courts			5234 Melrose Ave.	Lo,Angelo,	90038			Studios,lbr	(323)231-1107 (323) 883-9000
Linda Vista Senior Apartments			630 S. St. Louis St.	Lo,Angelo,	90023			Senior; Studios, Jin	(323) 685-2826
Lomm Height,			3327 E. Sabina St	Lo,Angelo,	90023			Multi-Family; 2br, 3in	(323) 780-1700
Lomm Height,			3710 E.gel StB.	Lo,Angelo,	90063				213-400-0002
Mariposa Place			5030 Santa Monica Blvd.	Lo,Angelo,	90029			Multi-Family; lbr; 2in, 3in, 4in	(323) 644-1878
Roland Curtis East/West			1077 W. 38th Street	Lo,Angelo,	90037				(213)261-5068; rollandcurtis@abodecommunities.org
SHARE! - Bright Path	Open		Cross Streets S Avalon Blvd. & Slauson Ave.	Lo,Angelo,					1-877-742-7349
SHARE! - Grateful House	Open	Women	Cross Streets: S Avalon Blvd. & E Martin Luther King Jr. Blvd.	Lo,Angelo,					1-877-742-7349
SHARE! - Kimberly's House	Open		Cross S - : S Grameny Pl. & W. 81st Street	Lo,Angelo,					1-877-742-7349
SHARE! - Precious House	Open		Cross Streets: San Pedro St & E Adams Blvd.	Lo,Angelo,					1-877-742-7349
Silverlake New Hope Apartment,			2301 Brier Ave.	Lo,Angelo,	90006				(213) 387-7085 (323) 838-8556
Springbaven			1853 E. 118th Street	Lo,Angelo,	90059				www.linchousing.org (562) 257-5100 (call cent.,) (323) 734-2574
The Crenshaw Villas			2645 S Crenshaw Blvd	Lo,Angelo,	90016				(323) 804-3156
Tune, Apt		disabled	7000-14 S Hoover, St	Lo,Angelo,	90044			Multi-Family; 2br	(213)240-1255
Waterloo Heights Apts			1011 Waterloo St.	Lo,Angelo,	90028				
Westmont Vista	Reserem,Only	Unhoused/families and TAY	1763 W Imperial Hwy	Lo,Angelo,	90047	Los Angeles	38	1 Br, 2Br, 3Br	213-225-2728
William Mead Homes			1316N Main St	Lo,Angelo,	90012			Multi-Family	(323) 221-9197
PATIMetro Villas			320-340 Madison Ave	Lo, Angeles	90004				(323) 644-2200; path@epath.org
1375 St Andrews Apartments			1365-1375 St Andrews Place	Los Angeles	90028				(323) 462-2572
Hollywood City Light,			525 W 127th St	Lo Angeles- A l h e n s / W -	90044	C - . J Lo, Angeles			(323) 779-1645
Turner, A p -	Open		7000-14 S Hoover St	Lo Angeles- A l h e n s / W -	90044	C - . J Lo, Angeles	32	213,	Mariane White (323) 804-3156 o-(323) 486-5324; application available onsite Monday- Friday from 9am- 5pm; www.solary-entcom
Baldwin Hills Apartments			4063 Nicolet Ave	Lo Angeles- Baldwin Hills/ Crenshaw/ Leimert Park	90008	C - . J Lo, Angeles			(323) 227-5260
Boyle Apartment,			427 S Boyle Ave	Lo Angeles- Boyle Heights	90033	C - . J Lo, Angeles		JB,213,	(213) 252-5997
Cuatro Vientos Apartments			5331 E Huntington Drive N	Lo Angeles- Boyle Height,	90032	C - . J Lo, Angeles		JB,,213,,313,,413,	(323) 221-1800
Evergreen Village Apartments			420 N Evergreen Ave	Lo Angeles- Boyle Height,	90033	C - . J Lo, Angeles		JB,,213,,313,,413,	(323) 780-0612
I.A. PRO I			1011 N Cumming St	Lo Angeles- Boyle Height,	90033	C - . J Lo, Angeles		JB,,213,	(323)221-0172
Las Margaritas Apartments			137N Soto St	Lo Angeles- Boyle Height,	90033	Central Los Angeles		Studio, lbr, 2Br, 313,	(323) 262-2453

Linda Vista Senior Apartments			630 S St Louis St	Los Angeles - Boyle Heights	90023	Central Los Angeles		Studio, 1Br	(323) 685-2826
HmtVillage			6941 Owensmouth Avenue	Los Angeles - Canoga Park	91303			3Br, 2Br	Angelita (818) 704-5983; hart@abodecommunities.org;
NoblePinesApartments	Co,od		21617 SaticoySt	Los Angeles - Canoga Park	91304	San Fernando Valley	68	1Br, 2Br, 3Br, 4Br	Srepplwre (818) 884-2160
East I A North I			3333 N Mission Rd	Los Angeles - Central LA	90031	Central Los Angeles		1Br, 2Br	(323) 227-5260
Bartlett Hill Manor			625 N Bunker Hill Ave	Los Angeles -	90012	Central Los Angeles		##	(213) 626-6555
Casanova Gardens			433 Casanova St	Los Angeles -	90012	Central Los Angeles		2B,	(323) 223-4198
Cesar Chavez Gardens			555 W Cesar E Chavez	Los Angeles -	90012	Central Los Angeles		2Br, 3Br, 4Br	(323) 437-9706
VistaHomes		Persons with developmental disabilities or who are blind.	23210 Justice	Los Angeles -	90012	Central Los Angeles			(818)778-1900; (818) 708-1740
William Mead Homes			1316NMainSt	Los Angeles -	90012	Central Los Angeles			(323) 221-9197; 2132522500
A b b e y A p -			625 S San Pedro St	Los Angeles - DTLA	90014	Central Los Angeles		##	(213) 683-0522
Alegria Apartments			801 W23 St	Los Angeles - DTLA	90007	Central Los Angeles		##	(866) 933-2293 Ext 35755
Angelus Plaza			2555Hil1St	Los Angeles - DTLA	90012	Central Los Angeles		##	(866) 933-2293 Ext 40357
Grend&Venice			1500 S Grand Ave	Los Angeles - DTLA	90007	Central Los Angeles			(213)741-9374
The Clark Residence			306 S LomaDr	Los Angeles - DTLA	90017	Central Los Angeles		Multi-Family: 1br	(213) 484-1329
Young Apanemm			1621 S Grand Ave	Los Angeles - DTLA	90015	Central Los Angeles		1Br/Multifamily	(866) 933-2293 Ext 11864
Lorena Heights A p - - -	Co,od		3327 E Sabina St	Los Angeles - East LA	90023	East Los Angeles		2Br, 3Br	(323) 780-1700
			3710 Bagel StB	Los Angeles - East LA	90063	East Los Angeles			(213) 400-0002
Allesandro Street Apartments		Persons with disabilities	1934 Allesandro St	Los Angeles - Echo Park/Silverlake	90039	Central Los Angeles		##	(323) 665-2736; (213) 628-1036
Alvarado Gardens			1800 N Alvarado St	Los Angeles - Echo Park/Silverlake	90026	Central Los Angeles		1Br, 2Br, 3Br	(323) 660-0605; (650) 968-2660
A n g e l i o a A p -			1336W AngelioaSt	Los Angeles - Echo Park/Silverlake	90026	Central Los Angeles		2Br, 3Br, 4Br	(213)482-1600
Imogen Housing			716 Imogene Ave	Los Angeles - Echo Park/Silverlake	90026	Central Los Angeles		2Br, 3Br, 4Br	(323) 660-6102
mne,Heigbts		Persons with disabilities	1245 E Innes Ave	Los Angeles - Echo Park/Silverlake	90026	Central Los Angeles			(844) 349-8886
Silverlake New Hope Apanemm		III/AIDS	2301 Brier Ave	Los Angeles - Echo Park/Silverlake	90006	Central Los Angeles			(213) 387-7085; (323) 838-8556
Women's Village Project		III/AIDS; Disability	1660 Rockwood St	Los Angeles - Echo Park/Silverlake	90026	Central Los Angeles		2B,	(213) 483-6654; (714) 282-2520
Balboa G,rule A p -			10620 Balboa Blvd	Lo,Angele,-Granadallills	91344	SanFern,ndo V,lley		##	(818) 831-1432
Balboa G,rule A p -			10620 Balboa Blvd.	Lo,Angele,-Granadallills	91344	SanFern,ndo V,lley		##	818-831-1432
Beverly City Lights			107 S Carorulet St	Lo,Angele,-Hollywood	90057	Cenual Lo, Angele,		1Br, 2Br, 3Br	(213) 380-7935
Casa Rampart Apartments			5 1 2 S - B 1 v d	Lo,Angele,-Hollywood	90057	Cenual Lo, Angele,		Studios	(213) 383-3525
Leland Courts			5234 Melrose Ave	Lo,Angele,-Hollywood	90038	Cenual Lo, Angele,		Studios, 1Br	(323) 231-1107; (323) 883-9000
RoyalAp'l'I			772-6NVanNessAve	Lo,Angele,-Hollywood	90038	Cenual Lo, Angele,		Studio, 1Br, 2Br	(323) 231-1107; (323) 883-9000
The Courtyard at La Brea			1145NLaBreaAve	Lo,Angele,-Hollywood	90038	Cenual Lo, Angele,			(323) 654-2766
Waterloo Heights Apartments		Persons with disabilities	1011 Waterloo St	Lo,Angele,-Hollywood	90028	Cenual Lo, Angele,			(213)240-1255
The Depot at Hyde Park	Co,od		6527 Crenshaw Blvd	Lo,Angele,-Hyde Park	90043		48	1 Br, 2 Br, 3 Br	213-433-0208 ° 211 ° (888) 877-5379 ° California Relay 711 www.depotathydepark.com
Caroline Severance Manor			2936 W Eight Street	Lo,Angele,-Koeau,wn	90005	Cenual Lo, Angele,			(213) 375-3906
Magnolia City Lights		Special needs	2885 Leeward Ave	Lo,Angele,-Koeau,wn	90005	Cenual Lo, Angele,			(213) 365-8135
SHARE! - A Place of Peace	Open		Cross Streets Shenandoah Ave. & Slauson Ave.	Lo,Angele,-u,deraHeights					1-877-742-7349
Hancock - -			303 S Van Ness Ave	Lo,Angele,-Lincoln Heights	90031	Cenual Lo, Angele,		2Br, 3Br	(323)231-4174
MariposaPlace			5030 Santa Monica Blvd	Lo,Angele,-LittleArmenia	90029	Cenual Lo, Angeles		III,2III,3III,4III	(323) 644-1878
Barnsdall Court Apartments			1632 NormandieAve	Los Angeles - Los Feliz	90027	Cenual Lo, Angeles		III	(323) 906-1604
Priooes Apartments			1648 N Kingsley Dr	Los Angeles - Los Feliz	90027	Cenual Lo, Angeles		Multi-Family: 1br	(213) 252-5997
A r - S q u a r e		Special needs	1553 S Arlington Ave	Lo, Angeles - Mid City	90019	Cenual Lo, Angeles			(323) 757-0670 ext 105
Codmm City lights			1315 S Cochran Ave	Lo, Angeles - Mid City	90019	Cenual Lo, Angeles		3B,	(323) 936-6497
The Cleo Apartments			345 SAlexandria.Ave	Lo, Angeles - Mid City	90020	Cenual Lo, Angeles			(213) 389-1050
			2641 S Manhattao H	Lo, Angeles - Mid City	90018	Cenual Lo, Angeles			(213) 884-7172
Academy Village A p -	Co,ood		5225 Blakeslee Ave	Lo,Angeles- N - Hollywood	91601	SanFernandoValley	248	III,2III	CoontactKathyWood(Manager) (818) 985-8277; equityapartments.com
Bella Vista	Open		15520 Parthenia St	Lo,Angeles- N - Hills	91343	SanFernandoValley		4B,	818-767-4700
Perthelia Townhomes			15520 Parthenia St	Lo,Angeles- N - Hills	91343	SanFernandoValley		3B,	(818) 901-6019
S&AProperties	N/A: Private			Lo,Angeles- N - Hills	91343	SanFernandoValley		III,2III,3III	818-901-6019
			8435 OrianAve	Lo,Angeles- N - Hills	91343	San Fernando Valley		3B,	(818) 904-6019

Academy Village A p -			5225 Blakeslee Ave.	Lo, Ailgcle, - North Hollywood	91601	San Fernando Valley		!Br, 2Br	(844) 529-4848 (818) 600-6676; moorpark.berglasandgarfield.com; mo01park@woodbridgegarfield.com, moorpark@berglasandgarfield.com
Woodbridge Park A p -			11220 Moorpark St	Lo, Ailgcle, - North Hollywood	91602	San Fernando Valley		!Br, 2Br, 3Br	
Hoover Street A p -			963 Hoover St	Lo, Ailgcle, - Pico Union	90006	CentraLo, Angeles			(213) 387-7085
Nuevo Pico Union Apartments SHARE! - Foundation for Homeless Heroes	Open	liv/AIDS Med45+	1335 W. 17th Street Cross Streets: S Weston Ave. & Venice Blvd.	Lo, Ailgcle, - Pico Union	90006	CentraLo, Angeles		2Br, 3Br	(213) 483-2767 1-877-742-7349
Roscoe Park Apartments			21025 Roscoe Blvd	Lo, Ailgcle, - S. ead	91304	San Fernando Valley		2Br, 3Br	(818) 998-3201 (323) 838-8556 (323) 622-0006
NYUMBA Apts San Pedro New Hope Courtyard Apts			962 S - Hoover St 1124 S. Palos Verdes St	Lo, Ailgcle, - San Pedro	90006 90731				(310) 831-6851 (323) 838-8556
Washington 722 TOD			722, 726, 732, 736 E. Washington Blvd.	Lo, Ailgcle, - Southeast	90021		55	1Br & 1Bth, 2Br & 1Bth, 3Br & 2Bth	(213) 748-1557
Harbour Community		houseless; domestic violence	12157 San Fernando Rd.	Lo, Ailgcle, - Sylmar	91342	San Fernando Valley		!Br, 2Br	(818) 364-7039
Ivy Terrae			13751 Sherman Way	Lo, Ailgcle, - Van Nuys	91405	San Fernando Valley		!Br, 2Br, 3Br, 4Br	(818) 781-3519
United Cerebral Palsy Evergreen Manors Garfield Villas		Persons with disabilities	111 S Margarita Ave	Monrovia Moutery/Parc	91016 91754	San Gabriel Valley San Gabriel Valley		4Br, 5Br	(818) 782-2211 (626) 458-1462 (626) 300-0680
Pacific Bridge Adult Res Fac Garfield Villas			500 S Mcpherson Ave	Moutery/Parc Montney/Parc	91754 91754	San Gabriel Valley		!Br	(323) 721-1655 (626) 300-0680
Angeles City Lights Camino Gonzales Farmworker A . -	Open		13915 West Oxnard 481 W Gomales Rd	Oxnard	91410	Ventura Cowty	49	3Br, 4Br	Call (818) 988-0275 to receive application through email or onsite; www.triumphresidential.com (805) 981-9909
Casa San Juan Apartment			500 Hobson Way	Oxnard		Ventura Cowty			(805) 483-7122
Chanoc Jsalids Park Apartments Homes			931 Bismark Way	Oxnard	93033	Ventura Cowty		!Br, 2Br, 3Br	(805) 486-2906
Colonial House Farmworker A . -	Open	USDA Farmworker AND either U.S. Citizen or Permanent Resident	705 N. Oxnard Blvd.	Oxnard	93030	Ventura Cowty			(805) 485-7840; Required: Last 2 years of taxes, DL, SS or Perm Res Card w/Social, last 6 months of bank statements; https://oxnard.pwapt.com/contact.php
D Street Apartments			110 N D St	Oxnard		Ventura Cowty			(805) 496-4948
Gateway Plaza			719 S Oxnard Blvd	Oxnard	93030	Ventura Cowty			(805) 385-3443
Holiday Manor Apartments		low income	1924 Camino Del Sol	Oxnard	93030				(805) 485-3191
Holiday Manor A p - Las Villas de Paseo	Closed		1924 Camino Del Sol 5493 Cypress Rd.	Oxnard Oxnard	93030 93033	Ventura Cowty			(805) 485-3191; Roots: !Br \$1,224; 2Br: \$1463, 3Br: \$1683 (805) 986-5010
Las Villas de Paseo	Open		5493 Cypress Rd	Oxnard	93033	Ventura Cowty	72	2Br, 3Br	Call Amy Mon - Fri from 8am - 5pm at (805) 986-5010 to make an appointment. Current waitlist has 100 applicants.
Many Mansions - Houshlg Conral	Closed	TAY (18-24); persons with mental illness disability	110 North D St.	Oxnard		Ventura Cowty			(805) 496-4948
Many Mansions - Terry's Place Meta Street Farmworker Family Apartments	Closed		352 & 354 Chmnd Islands Blvd 501 Meta St	Oxnard	93033 93030	Ventura Cowty			(805) 497-0344 (805) 659-3791
Paseo Del Luz, Apartments Paseo Sama Clara/ Del Rio A . -			47 W Gonzales Rd 287 Riverpark Blvd.	Oxnard Oxnard		Ventura Cowty			(805) 983-7126 (805) 485-2260
Paseo Sama Clara/ Del Rio A . - RHF Sonata at Riverpark			287 Riverpark Blvd 401 Danvers River St	Oxnard	93036	Ventura Cowty			(805) 485-2260 (805) 531-5899
Terraza de Cortes			201 Carmelia Ct	Oxnard	93030	Ventura Cowty			(805) 486-7700; terrazedelascortes@levinegroups.com
Terry's Place			352 & 354 Chmnd Islands Blvd	Oxnard	93033	Ventura Cowty			(805) 497-0344
Villa Cesar Chavez Farmworker Family A -	Open	USDA program. Restriction: ONLY head of household must be a current, retire, or disable agricultuiml worker	5559 Salvador Ili	Oxnard	93033	Ventura Cowty	51	2Br, 3Br, 4Br	Call Kristina (Resident Manager) at (805) 271-1067 or email cheredia@cabrilloedc.org; applicants will be offered unit in the order they applied in; www.cabrilloedc.org
Villa Cesar Chavez Farmworker Family A - Vills Madera	Open		5559 Salvador Drive 1051 North A St	Oxnard Oxnard		Ventura Cowty			(805) 271-1067 (805) 988-9035
Villa Solimar Family A . - - Cabrillo BCD Vineyard Gardens	Closed		902 Donlon St 161 W Stroube St	Oxnard Oxnard		Ventura Cowty			(805) 483-5188 (805) 604-0474; www.wng.com
Wagon Wheel Apartments	Open	No Pet	510 Winchester Ili	Oxnard	93036	Ventura Cowty	25 property, 120 units managed by Raquel	1Br, 2Br, 4Br	Raquel (805) 604-4520; Application available via email and onsite; www.cabrilloedc.org Ariana (661) 285-3118 or Cyotlia (661) 285-3118; apartments.com/casablancaapptliving.com 800-801-8440 ext 7206 (661) 266-2997 (661) 947-6336
Casa Blanca Apartments Coursors Arts Colony West Longhorn Pavilion Palmdale East Q Apartments Acapella of Pasadena Acapella of Pasadena Acapella of Pasadena	Priority given in order of application	All ages.	4160 East Avenue R East Avenue Q II 36523 25th St East 1000 East Ave Q 145 Chestnut St 231 S DeLacey Ave 231 S. DeLacey Ave.	Palmdale Palmdale Palmdale Palmdale Pasadena Pasadena Pasadena	93532 93550 93550 93550 91103 91103 91103	Aorelope Valley Los Angeles Los Angeles Aorelope Valley San Gabriel Valley San Gabriel Valley	200	2Br, 3Br 2Br, 3Br 2Br, 3Br !Br, 2Br, 3Br	(626) 405-9447 (626) 405-9447 (626) 405-9447
Allen House			1808 Las Lunas	Pasadena	91104			!Br fur disabled/elderly	Damioon Lee (626) 449-2919
Casa D'Orol			1370 N Dominion Ave.	Pasadena	91104			!Br fur disabled/elderly	(626) 449-2919
Dudley House		Persons with disabilities/ Seniors	2131 E Broadway St	Pasadena	91104	San Gabriel Valley	62	!Br fur disabled/elderly; 2 Br for all MJES.	(626) 449-2919



# SENIOR & VETERAN HOUSING LISTINGS

This section lists contact information for housing that is reserved for seniors and/or veterans, or offers services targeted to seniors and/or veterans.





**NOW LEASING**  
[www.whchc.org/find-housing](http://www.whchc.org/find-housing)

West Hollywood Community Housing Corporation  
 presents

# Third Thyme

An affordable apartment community for adults 55+  
 1441 W. Third Street, Los Angeles, CA 90017

Third Thyme is a 104-unit affordable housing community for people 55 years and older located in Los Angeles, California. Developed by WHCHC under the Low-Income Housing Tax Credit (LIHTC) program, the community provides high-quality, affordable apartment homes for adults 55+. Third Thyme is thoughtfully designed to promote comfort, safety, and accessibility while fostering a strong sense of community and connection among residents. The property offers a supportive environment where seniors can enjoy stable housing and enhanced quality of life. **There is limited residential parking at Third Thyme.**

## APARTMENT AMENITIES:

- Air Conditioning
- Dishwasher
- Garbage Disposal
- Private Balcony

## COMMUNITY AMENITIES:

- Community Room
- Computer Lab
- Open-Air Courtyard
- Community Backyard
- Laundry Room

## APPLICATION INFORMATION:

Applications for Third Thyme may be picked up in person at: 1441 W. 3rd St. Los Angeles, CA 90017. Applications may also be mailed upon request. To schedule an application pick-up appointment or to request that an application be mailed to you, please contact the management office by phone 714-221-5697 or email [thirdthyme@barkermgt.com](mailto:thirdthyme@barkermgt.com). Reasonable accommodations for application pick-up will be provided upon request. For after-hours pick-up, please contact the management office in advance to make arrangements.

**Now offering a \$1,000 security deposit!**

For more information, please contact 714-221-5697 or email [ThirdThyme@barkermgt.com](mailto:ThirdThyme@barkermgt.com) to make an appointment to pick up an application. Paper applications must be returned in person or by mail. TTY: 711



## SUBMITTING APPLICATIONS:

**Completed applications may be submitted by:**

**Mail:**

Third Thyme  
1441 W. Third Street  
Los Angeles, CA 90017



OR

1101 E. Orangewood Ave.  
Anaheim, CA 92805

**In Person:**

Walk-ins are welcome during regular office hours.

**APPLICATION LINK:** [bit.ly/ThirdThyme](https://bit.ly/ThirdThyme)

**Online Interest List:** You may also submit an interest application at [AccessHousingLA.org](https://AccessHousingLA.org)

## PERMANENT SUPPORTIVE HOUSING (PSH) UNITS:

- **Total Units:** 52
- **Subsidy:** Project-Based Vouchers (PBVs) administered by the Housing Authority of the City of Los Angeles (HACLA)
- **Referral Process:** Must be referred through the Los Angeles Homeless Services Authority (LAHSA) Coordinated Entry System (CES)
- **Eligibility:** Must meet federal and local definitions of homelessness and be 55 years of age or older
- **Supportive Services:** Provided on-site by Ascencia

## GENERAL ELIGIBILITY REQUIREMENTS:

All applicants must:

- **Meet Age Requirement:** At least one household member must be 55 years or older
- **Meet Income Limits:** Based on Area Median Income (AMI)
- **Provide Documentation:** Required income and asset documentation
- **Complete Verifications:** Third-party verifications as needed
- **Meet Occupancy Standards**
- **Meet Screening Criteria**



**OFFICE HOURS**  
**MONDAY - FRIDAY**  
**8:00 AM - 5:00 PM**

## PROOF OF INCOME:

**All Documents must be dated within 120 days**

- Last 3 consecutive pay stubs
- Social Security award letter for SSA/SSI
- Unemployment Claim Award Letter
- Self Employment Only: 2 Year Tax returns
- Child Support documents
- County-Assistance-CalWorks
- Retirement Income
- Any Other Type of Income not listed
- Other documents may be required

## APPLICATION INFORMATION:

- **Identification**
- Government issued ID, DL, etc.
- 6 months of current and consecutive bank statements for all checking accounts
- Most current savings statement
- Direct Express card with receipt stating current balance
- Other documents may be required

This housing is offered without regard to race, color, religion, sex, gender, gender identity and expression, familial status, national origin, citizenship status, immigrant status, primary language, marital status, ancestry, age, sexual orientation, disability, source of income (including receipt of Section 8 and other similar vouchers), genetic information, military or veteran status, arbitrary characteristics, or any other basic currently or subsequently prohibited by law.



# MOVE - IN QUALIFICATIONS

ADA Designations	Mobility	Sensory	Total
General Affordable	27 / One-Bedroom	6 / One-Bedroom	33
CES Referral / Permanent Supportive Housing (PSH)	25 / One-Bedroom	5 / One-Bedroom	30
Exempt Units	1 / One-Bedroom	N/A	1
Total	53	11	64



For more information, please call 714-221-5697 or email [ThirdThyme@barkermgt.com](mailto:ThirdThyme@barkermgt.com). Applications may also be downloaded online at [bit.ly/ThirdThyme](http://bit.ly/ThirdThyme).

Unit Type Area Median Income (AMI)	Minimum Monthly Income	Maximum Annual Income	Occupancy	Rent*	Security Deposit
One-Bedroom 50% AMI	\$ 2,754	\$ 53,000 \$ 60,600 \$ 68,150	1 2 3	\$ 1,369	\$ 1,377
One-Bedroom 60% AMI	\$ 3,322	\$ 63,600 \$ 72,720 \$ 81,780	1 2 3	\$ 1,653	\$ 1,661
One-Bedroom CES / 30% AMI**	N/A	\$ 31,800 \$ 36,360 \$ 40,890	1 2 3	PBV	\$ 500

\*Rents and Deposits are Subject to Change

\*\*AMI limits are set by California Tax Credit Allocation Committee (CTCAC)

\*\*\*Rents are subject to change annually based on rent limits published by CTCAC



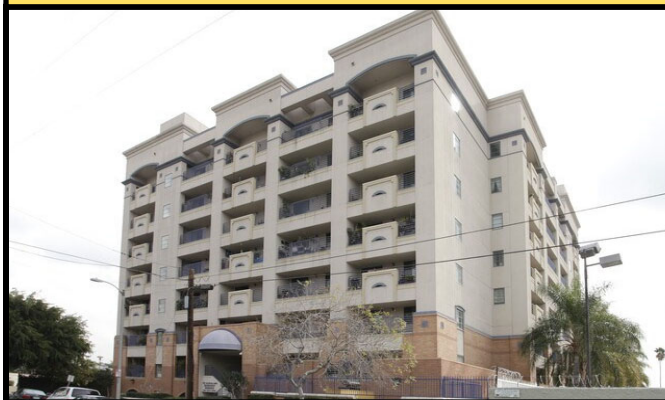
# The Salvation Army Hollywood Silvercrest

## AFFORDABLE SENIOR HOUSING

### NOW ACCEPTING APPLICATIONS FOR THE WAITING LIST



**Address: 5940 Carlos Ave.  
Los Angeles, CA**



#### Application Information

Waitlist opening 6/15/26 to 7/15/26 or until 300 eligible applicants are placed on the waitlist.

Hollywood Silvercrest Residences is accepting applications for 1 bedroom units, and accessible 1 bedroom units. Rents based on 30% adjusted income.

Applications will be accepted via fax or email. Applications received will be added to the bottom of the waiting list based on date received.

#### 2026 INCOME LIMITS

Number of Persons	Extremely Low Income 30% of Median	Very Low Income 50% of Median
1	\$35,000	\$58,300
2	\$40,000	\$66,650



Applicants must be age 62 and over.



Incomplete applications will be denied.



One application per household.

This housing is offered without regard to race, color, religion, sex, gender, gender identity and expression, familial status, national origin, citizenship status, immigrant status, primary language, marital status, ancestry, age, sexual orientation, disability, source of income (including receipt of Section 8 and other similar vouchers), genetic information, military or veteran status, arbitrary characteristics, or any other basis currently or subsequently prohibited by law. This property has accessible and adaptable units for people with disabilities. People with disabilities may ask for, and receive reasonable accommodations, modifications, and auxiliary aids, including in the application process.

#### REQUESTING AN APPLICATION



Please call (323) 410-5890 to request application or email  
[Hollywood.Silvercrest@usw.salvationarmy.org](mailto:Hollywood.Silvercrest@usw.salvationarmy.org)  
 Fax (323) 460-4339 Language assistance available TTY: 711  
 Applications may also be submitted through: [www.accesshousingla.org](http://www.accesshousingla.org)



# STEPS ON ST ANDREWS IS NOW LEASING

1808 S ST ANDREWS PLACE,  
LOS ANGELES, CA 90019



## 4 STUDIO UNITS

AMI: 60%

Rent: \$1477

Utilities: Not included

Tours available daily

### PROPERTY FEATURES



COMMUNAL PORCH &  
OUTDOOR TERRACE



COOKTOP &  
REFRIGERATOR  
STUDIO UNITS



ON SITE LAUNDRY



BICYCLE PARKING



ON SITE

SUPPORTIVE SERVICES

### QUALIFICATIONS

VETERAN(DD214REQUIRED)

### APPLICATIONS

APPLICATIONS ACTIVELY BEING  
ACCEPTED

### WHERE TO APPLY

STEPSONSTANDREWS@TRILLILUM-PM.COM

SCAN CODE TO RSVP



### YOUR RIGHTS AS AN APPLICANT

Individuals with a disability have the right to ask for available accessible units, receive reasonable accommodations and to request auxiliary aids. If, as a result of a disability, you need changes in the way we communicate with you, please contact (562) 997-9200 ext. 106 or TTY: Voice or via relay operator 711. This housing is offered without regard to race, color, religion, sex, gender, gender identity and expression, familial status, national origin, citizenship status, immigrant status, primary language, marital status, ancestry, age, sexual orientation, disability, source of income (including receipt of Section 8 and other similar vouchers), genetic information, military or by law. Individuals with a disability have the right to ask for and receive reasonable accommodation and to request auxiliary aids. .

# Casa de Rosas

2600 S. Hoover St., Los Angeles CA 90007



**Casa de Rosas** offer 36 units for chronically homeless and homeless veterans and their families who qualify within the program eligibility requirements and income guidelines. The building consists of 15 studios, 19 one-bedrooms, and 2 two-bedroom units of which 18 units will be designated under the HUD-VASH project-based voucher program. All apartments will be made available to chronically homeless or homeless veterans and their families earning no more than 35% of the area median income and who have a chronic illness.

The individual apartment units are designed to provide the very best in use of space, comfort and efficiency in maintenance and operations. The units overall will provide all the comforts of home with a sense of pride and well being. Building entry will be controlled by an intercom and key pad system with an electronically controlled gate.

**Casa de Rosas** will provide appropriate services or assistance in obtaining supportive services, including health or mental health care. The development will provide much needed affordable housing and contribute toward the revitalization of the neighborhood.

**Casa de Rosas** offers housing without regard to race, color, religion, sex, gender identity and expression, family status, national origin, marital status, ancestry, age, sexual orientation, disability, source of income, genetic information, arbitrary characteristics, or any other basis prohibited by law. Reasonable accommodations and modifications will be provided upon request.

## Amenities

- Central Heating & Air Conditioning
- Ceiling Fans
- Laundry Rooms
- Community Rooms
- Close to Grocery Stores
- Close to Medical Clinics & Hospitals
- Bus service also connects residents to other major transit nodes, cultural amenities, and social services located in the immediate vicinity.



For more information, please contact >>>

Casa de Rosas Campus

2600 South Hoover Street  
Los Angeles, CA 90007  
T 323.629.7336 | TTY 711

**Casa de Rosas  
2600 S. Hoover St.  
Los Angeles, CA 90007  
NOW ACCEPTING APPLICATIONS**

Casa de Rosas is a 36-unit housing facility for veterans and their families that consist of 15 studios, 19 one-bedroom, and 2 two-bedroom units. The amenities include central heating and air conditioning, on-site laundry facilities, elevator, recreation/community room, and an intercom system entrance.

Casa de Rosas is a recipient of housing subsidy under one or more subsidy programs, and is subject to applicable laws, regulations and guidelines. This community provides long-term affordable housing for extremely low-income veterans and their families. All applicants require registration with the Los Angeles Homeless Services Authority (LAHSA's) Coordinated Entry System (CES). CES is a list of all of the people in the region experiencing homelessness, prioritized by community standards, and referred to available housing inventory (CES works to connect the highest need, most vulnerable persons in the community to available housing and supportive services equitably). If you do not have a unique identification number, please call 2-1-1 or visit LAHSA's website [www.lahsa.org](http://www.lahsa.org) to find out how to register with CES.

**Eligibility Requirements**

**Veteran.** A veteran who served in the active military, naval, or air service and who was discharged or released from such service under conditions other than dishonorable.

**Veteran must have a chronic health conditions.**

**Veteran must be homeless or chronically homeless.**

The Household's annual income may not exceed the 2025 applicable income limits:

	1 person	2 persons	3 persons	4 persons
35% AMI	\$37,100	\$42,420	\$47,705	\$53,025

2025 Rents

	Studios	1 Bedroom	2 Bedrooms
35% AMI	\$891	\$945	\$1,130

The unit must be the household's only residence.

All applicants must meet screening criteria (i.e., criminal background including national sex offender registration screening, landlord verification, etc.).

For further information, please contact us at 323.629.7336.





**NOW LEASING!**

# AFFORDABLE MICRO EFFICIENCY RENTAL APARTMENTS

Abode Communities and City of Pasadena are now leasing 142 affordable micro-efficiency senior rental apartments at Centennial Place, a beloved architectural gem listed on the National Register of Historic Places.

Located just one block from City Hall, this newly renovated residential community offers affordable living combined with vibrant, secure, and well-maintained community spaces. A full-service community kitchen, onsite laundry, and shared bathrooms offer a low-maintenance lifestyle ideal for seniors or Eaton Fire survivors with limited incomes.

- ✔ Senior 55+ Living
- ✔ Great Pasadena Location
- ✔ Newly Renovated Historic Building
- ✔ Complimentary Resident Services
- ✔ In-Room Kitchenettes
- ✔ Lounge & Community Room
- ✔ Walking Distance to Transit

Estimated Household Income & Rent			
Annual HH Income	Monthly HH Income	Rental Subsidy	Resident Rent*
\$2,500	\$208	\$1,153	\$62
\$5,000	\$417	\$1,090	\$125
\$10,000	\$833	\$965	\$250
\$20,000	\$1,667	\$715	\$500
\$25,000	\$2,083	\$590	\$625
\$30,000	\$2,500	\$465	\$750

*\*Actual rent to be determined based on household income.*

**Learn More!**

**Property Tours Offered  
Monday - Friday, 2 - 4 PM**

[abodecommunities.org/centennial](http://abodecommunities.org/centennial)

Centennial Place  
235 E. Holly Street  
Pasadena, CA 91101  
(626) 585-0009

SEE BACKSIDE FOR MORE INFORMATION



## IMPORTANT INFORMATION

### Prepare for the Interview Now!

If you have been invited to interview, please bring the following information, if applicable, for all household members over the age of 18:

- Valid picture identification
- Birth certificate
- Social security cards
- Bank account statements (six most recent statements)
- Pensions and annuities (three most recent statements)
- Employment proof of income (three most recent months, consecutive)
- Self-employment proof of income (two years IRS tax return, including Schedule C)
- Self-employment current list of clients
- IRS tax return (most recent year)
- SSI or SSA/Disability (Benefit letter dated 120 days prior to move-in)
- Unemployment insurance (most recent statement or letter showing current benefit)
- Financial assistance (notarized letter from provider of payments outside of household)
- GA/AFDC/TANF (most recent statement or statement dated within 120 days of move-in)
- Child support and alimony (District Attorney notice, court order or provider letter plus two most recent checks)
- Other sources of income not listed

### Equal Opportunity Housing

Housing is offered without regard to race, color, religion, sex, gender, gender identity and expression, familial status, national origin, citizenship status, immigrant status, primary language, marital status, ancestry, age, sexual orientation, disability, source of income (include receipt of Section 8 and other similar vouchers), genetic information, military or veteran status, arbitrary characteristics, or any other basis currently or subsequently prohibited by law. Individuals with a disability have the right to ask for and receive reasonable accommodations and to request auxiliary aids.

### Accessible Units Available

Accessible units and/or units with accessible features are available. To inquire about accessible units, please contact the property directly.

### Rights of Individuals with Disabilities

Individuals with a disability have the right to request and receive reasonable accommodation, including auxiliary aids and services, and communications in alternative formats. To make a request, please contact the property directly.



# Thomas Safran & Associates

(310) 820-4888 / TTY: (800) 855-7100

## Properties with Open Waiting Lists

Age Restricted



**Avalon Courtyard**  
22121 S. Avalon Boulevard  
Carson, CA  
(310) 522-9858  
Age Restricted: 62+



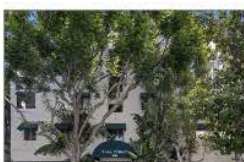
**Beacon Hill**  
309 Beacon St  
Avalon, CA  
(310) 510-2471  
Age Restricted: 62+



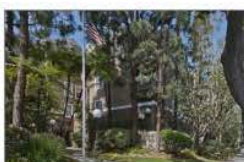
**Breezewood Village**  
16000 East Grayville Drive  
La Mirada, CA  
(562) 943-9555  
Age Restricted: 62+



**Casa Lucerna**  
1025 Kern Avenue  
Los Angeles, CA  
(323) 266-3313  
Age Restricted: 55+



**Clark Terrace**  
1156 South Clark Drive  
Los Angeles, CA  
(310) 859-8655  
Age Restricted: 62+



**Coleman Court**  
1421 Cravens Ave  
Torrance, CA  
(310) 212-5898  
Age Restricted: 62+



**Corona Villas**  
2680 S. Main Street  
Corona, CA  
(951) 272-1868  
Age Restricted: 62+



**Covina Gardens**  
200 West Rowland Street  
Covina, CA  
(626) 967-4796  
Age Restricted: 55+



**Gateway**  
720 E. Carson Street  
Carson, CA  
(310) 522-4343  
Age Restricted: 55+



**Gateway at Willowbrook**  
11740 Bandera Street  
Los Angeles, CA  
(323) 566-2081  
Age Restricted: 62+



**Goldware Senior Housing**  
6730 Streeter Avenue  
Riverside, CA  
(951) 351-1234  
Age Restricted: 55+



**Lark Ellen Village**  
1350 E. San Bernardino Road  
West Covina, CA  
(626) 732-3939  
Age Restricted: 62+



**Lexington Square**  
250 E Lexington Avenue  
El Cajon, CA  
(619) 444-2642  
Age Restricted: 62+



**Montecito II**  
6658 Franklin Avenue  
Los Angeles, CA  
(310) 820-2236  
Age Restricted: 55+



**Ocean Terrace**  
3851 226th Street  
Torrance, CA  
(310) 373-0903  
Age Restricted: 62+



**Rittenhouse Square**  
1100 E. 33rd Street  
Los Angeles, CA  
(323) 432-0890  
Age Restricted: 55+



**Town Meadows**  
115 West Murray Avenue  
Visalia, CA  
(559) 627-2220  
Age Restricted: 62+



**Whittier Towers**  
7215 Bright Avenue  
Whittier, CA  
(562) 693-1353  
Age Restricted: 62+



**William Penn Manor**  
7025 Friends Avenue  
Whittier, CA  
(562) 945-1344  
Age Restricted: 62+

## SENIOR HOUSING

	<u>Address</u>	<u>Qty</u>	<u>Zip Code</u>	<u>Phone</u>
Brookdale Alhambra	1 East Commonwealth Ave.	Alhambra	91801	626-551-0895
Plaza on Main	333 West Main Street	Alhambra	91801	626-289-5800
North Lake Villas	2851 N. Lake Ave.	Altadena	91001	626-398-8668
Heritage Park	150 West Las Tunas	Arcadia	91007	626-821-9048
Santa Anita Retirement Center	5600 Gracewood Ave.	Arcadia	91007	626-442-8410
Loving Care Home	735 E. Hanks St.	Azusa	91702	626-969-2411
Soldano Senior Village	450 N Soldano Ave.	Azusa	91702	626-334-3383
Villa Azusa Senior	200 E Gladstone St.	Azusa	91702	626-969-2711
Kay's Guest House	3748 Grace Ave.	Baldwin Park	91706	626-962-8022
Ramona Park Apartments	13870 Ramona Blvd	Baldwin Park	91706	(626) 338-0224
The Oaks on Florence	4224 Florence Avenue	Bell	90201	(323)-560-1222
Westminster Court	6850 Florence Ave.	Bell Gardens	90201	562-806-2893
Park View Terrace	6728 Clara Street	Bell Gardens	90201	(562) 928-0348
Belmont Place Apartments	9830 Belmont St.	Bellflower	90706	562-804-1458
Camelot Residential Homes	10337 Beach St.	Bellflower	90706	562-866-3955
The Watermark at Beverly Hills	Hills 220 N. Clark Drive	Beverly Hills	90211	424-354-2614
Sunrise of Beverly Hills	201 N. Crescent Drive	Beverly Hills	90210	310-929-5343
Burbank Senior Artist Colony	240 East Verdugo Avenue	Burbank	91502	(818) 955-9391
Bellmont Village Senior Living	455 E Angeleno Ave	Burbank	91501	818-972-2405
Olive Plaza Apartments	450 E Olive Avenue	Burbank	91501	844-699-9121
Atria Las Posas	24 Las Posas Road	Camarillo	93010	805-351-3406
Brookdale Camarillo	6000 Santa Rosa Road	Camarillo	93012	844-348-2214
Golden Horizon	2221 Briarfield Street	Camarillo	93010	805-388-0308
Mira Vista Village	2700 East Ponderosa Drive	Camarillo	93010	805-987-6486
Ocean Breeze Estates	1132 Blue Oak Street	Camarillo	93010	562-595-7567
Ponderosa Village	2105 E. Ponderosa Drive	Camarillo	93010	805-312-3673
Vintage Crossing Senior Apartments	6830 Jordan Ave.	Canoga Park	91303	805-987-0260
Avalon Courtyard	22121 S. Avalon Blvd	Carson	90745	818-596-0921
Carson Retirement Center	Center 345 E Carson	Carson	90745	310-522-9858
Carson Terraces Senior Apts.	632 E. 219th Street	Carson	90745	310-830-4010
Villaggio	555 E. Carson St.	Carson	90745	310-835-0969
Carson Gardens Apts.	21811 S. Main St.	Carson	90745	310-847-7737
Bella Vita	402 E Sepulveda Blvd	Carson	90745	310-518-2790
The Gateway at City Center	720 E. Carson St.	Carson	90745	714-282-2520
Claremont Villas Senior Apts.	100 S. Indian Hill Blvd	Claremont	91711	310-522-4343
Commerce Senior Citizens Apts.	6725 E. Gage St.	Commerce	90040	909-625-2424
Telacu Manor	7100 E. Gage St.	Commerce		562-928-2922
E. Boyd Esters Manor	1101 N. Central Ave.	Compton	90222	562-927-7427
South Bay Retirement Residence	1001 W. Cressey Street	Compton	90222	323-838-8556
St. Timothy's Manor	425 S. Oleander Ave.	Compton	90222	310-603-2954
The Metro Compton Senior Apts.	302 N. Tamarind Ave.	Compton	90222	310-609-0110
Atria	825 W. San Bernardino Road	Covina	91722	323-979-0863
Covina Gardens	200 West Rowland Ave.	Covina	91723	310-635-4000
El Descanso Retirements Homes	21020 East Cienega Avenue	Covina	91724	626-407-2056
Culver City Senior Housing	5166 Sepulveda Blvd.	Culver City	90230	626-967-4796
Palms Court	3995 Overland Avenue	Culver City	90232	626-357-5118
Rotary Plaza	5100 Overland Avenue	Culver City	90230	855-300-8819
Avila Gardens	1171 Encanto Pkwy.	Duarte	91010	626-303-4552
Heritage Park	91S Highland Ave.	Duarte	91010	626-709-5843
Huntington Oaks Village	1657 Huntington Drive	Duarte	91010	626-709-5845
Royal Oaks	1763 Royal Oaks Dr. North	Duarte	91010	(626) 448-2688
Westminster Gardens	1420 Santo Domingo Ave.	Duarte	91010	(626) 444-8943
Blessed Rock Apartments	4111 Tyler Ave.	El Monte	91731	(626) 443-3285
Casa De Esperanza	12000 Denholm Dr	El Monte	91732	(626) 279-1858
Flamingo Gardens	3711 Cogswell Rd.	El Monte	91732	
Pacific Towers Senior	10450 E. Valley Blvd	El Monte	91731	

## SENIOR HOUSING

	Address	Qty	Zip Code	Phone
Fillmore Senior Apartments	412 Santa Clara Ave.	Fliimore	90291	(805) 524-4124
Park View Senior Apartments	512 Main Street	Fliimore	93015	(805) 524-4700
Gardena Valley Towers Co-op	1715 W. 158th Street	Gardena	90247	310-217-1320
Broadview Residential Care	535 W. Broadway	Glendale	91204	818-246-4951
Parkview Glendale	426 Piedmont Ave.	Glendale	91206	818-246-7457
Leisure Vale Retirement	413 E. Cypress St.	Glendale	91205	818-244-2323
Windsor	1230 E. Windsor Road	Glendale	91205	747-800-4941
Glendora Gardens	340 N. Wabash Ave.	Glendora	91741	855-956-1586
Mauna Loa Oaks	19041 E. Mauna Loa Ave.	Glendora	91740	626-387-9186
Pilarville Gardens	1259 St. Vladimir St.	Glendora	91741	626-335-5136
St. James Homes	1042 Claraday St.	Glendora	91740	626-335-1995
Michael's Manor	23704 Hynford Pl. #237	Harbor City	90710	626-335-1995
Vista Lee Rosa Apts.	1001 Pacific Coast Hwy	Harbor City	90710	(310) 326-2733
Fonthill Care Gardens	14103 Fonthill Ave.	Hawthorne	90250	310-973-7242
Park Gale Guest Home	4760 W. 123rd St.	Hawthorne	90250	310-978-4676
Telacu Senior Housing	13000 Doty Ave.	Hawthorne	90250	310-675-8288
Belmont Village		Hollywood	90046	323-874-7711
				(323) 962-5811
Arirang Housing	1725 Whitley Ave.	Hollywood	90028	323-871-2116
Castle Argyle Apts.	1919 Argyle Ave.	Hollywood	90068	(323) 465-2082
Hayworth House	361 N Hayworth Ave.	Hollywood	90048	(323) 231-1104
Hollywood Fountain North	6233 Fountain Ave.	Hollywood	90028	(323) 461-9936
Hollywood Fountain South	6222 Fountain Ave.	Hollywood	90028	(323) 461-3758
Hollywood Knickerbocker	1714 N. Ivar Ave.	Hollywood	90028	323-870-9109
Hollywood Plaza Apts.	1637 N. Vine St.	Hollywood	90028	323-469-3211
Kingsley Manor	1055 N. Kingsley Drive	Hollywood	90029	323-661-1128
Melrose Garden	960 N. Martel Avenue	Hollywood	90046	323-928-4366
Casa Bonita Senior Apts.	6512 Rugby Avenue	Huntington Park	90025	323-553-2744
Eucalyptus Park	811 N. Eucalyptus Ave.	Inglewood	90302	310-677-7482
Regency Towers	151 N. Locust St.	Inglewood	90301	310-677-5400
Regent Plaza	201 West Regent St.	Inglewood	90301	310-672-5198
Westchester Villa	220 W. Manchester Blvd	Inglewood	90301	310-673-1093
Alondra Manor Home	15203 Alondra Blvd.	La Mirada	90638	714-228-1098
La Miranda Landmark	13710 Santa Tecla Ave.	La Mirada	90638	562-947-4087
La Miranda Vistas	14129 Adoree St.	La Mirada	90638	562-404-9975
The Palms	13001 La Miranda Blvd.	La Mirada	90638	844-455-7802
Breezewood Village	16000 East Grayville Drive	La Mirada	900638	562-943-9555
Canyon Terrace	2400 San Dimas Canyon Rd	La Verne	-	(909) 592-1255
Candlewood Park	4051 E. Candlewood St.	Lakewood	90712	(562) 531-3135
Arbor Court	44916 N. 10th Street West	Lancaster	93534	661-449-1660
Arbor Gardens	710 W. Kettering	Lancaster	93534	661-723-9015
Arbor Grove	855 W. Jackman Street	Lancaster	93534	661-949-6206
Cedar Creek Senior Apts.	1530 W. Avenue K8	Lancaster	93534	661-729-9998
Cedar Town Square Senior Apts.	44942 Cedar Ave.	Lancaster	93534	661-948-2571
Fernwood Apartments	45151 Fern Ave.	Lancaster	93534	661-948-0051
Lancaster Homes Apartments	711 W. Jackman St.	Lancaster	93534	(626) 262-4510
Max Keller Senior Apts.	44221 Kingtree Ave.	Lancaster	93534	661-940-8485
Mayflower Gardens	6570 W. Avenue L12	Lancaster	93536	661-943-3228
Prestige Assisted Living	43435 30th Street West	Lancaster	93536	661-949-2177
Tiana Rose Villa, LLC	45368 Tiana Rose Street	Lancaster	93536	661-945-2011
Lawndale Senior Housing	4702 W. 153rd Pl.	Lawndale	90260	(310) 644-1102
Lomita Care Center	1955 Lomita Blvd.	Lomita	90717	310-325-1970
Lomita Kiwanis Gardens	25109 Ebony Lane	Lomita	90717	310-325-5301
Covenant Manor	600 E. 4th Street	Long Beach	90802	562-435-1804
				562-444-1677
Del Amo Gardens	225. E. Del Amo Blvd.	Long Beach	90805	800-715-1250
Federation Towers	3801 W. Willow Street	Long Beach	90815	562-426-8404
Hacienda Grande	1740 Grand Ave.	Long Beach	90804	562-597-7753
				562-426-6547
Lone Beach Brethren Manor	3333 Pacific Place	Lone Beach	90806	562-595-7567

## SENIOR HOUSING

	Address	Qty	Zip Code	Phone
Menorah Senior Housing		Long Beach	90806	310-477-1476 562-426-4004
Lutheran Towers	2340 4th St.	Long Beach	90405	562-435-3448
New Hope Home	1150 New York Street	Long Beach	90813	562-591-5681
Park Pacific Tower	714 Pacific Ave.	Long Beach	90806	562-435-1803 562-277-1597
Plymouth West 200	240 Chestnut Ave.	Long Beach	90802	562-432-7958 562-595-7567
Providence Gardens	1011 Pine Ave.	Long Beach	90813	562-432-4454
Scherer Park Apts.	4676 Long Beach Blvd.	Long Beach	90805	562-422-1798
Seamist Towers	1451 Atlantic Blvd.	Long Beach	90805	562-218-0580
St. Mary's Tower	1120 Atlantic Ave.	Long Beach	90813	562-435-0614
Villa Redondo	237 Redondo Ave.	Long Beach	90803	562-434-9932 877-227-3505
Vista del Mar	3360 Magnolia Ave.	Long Beach	90806	562-595-1559
Adams Senior Housing	1925 Adams Blvd.	Los Angeles	90018	323-766-9535 310-477-1476
Afton Place	6230-6231 Afton Place	Los Angeles	90028	(323) 467-4972
Alice Manor	10325 Grandee Ave.	Los Angeles	90059	323-567-6463
Athens Vistas Senior Apartments	1300 W. 105th St.	Los Angeles	90044	323-893-2401
Baldwin Villa Plaza	3939 Mariton Ave.	Los Angeles	-	(323) 298-0400
Broadway Villas Apartments	9501 5 Spring Street	Los Angeles	90037	323-418-1800
Broadwood Terrace Apartments	5005 S. Main St.	Los Angeles	90037	877-937-4743 323-235-5280
Carondelet Senior Apts.	512 S. Carondelet Street	Los Angeles	90057	213-487-7298 310-204-2050
Casa de las Hermanitas	2801 E. 2nd Street	Los Angeles	90033	323-262-1709
Casa De Woods	1951 W 22nd St.	Los Angeles	90230	866-940-8905
Casa Development	1151 S New Hampshire St.	Los Angeles	90230	877-920-3960 213-251-5987
Casa Longwood	2535 Longwood Ave	Los Angeles	90016	(323) 734-1477 323-292-0074
Casa Lucerna	1025 Kern Avenue	Los Angeles	90022	323-266-3313
Casa Serena Apartments	5017 Axtell Street	Los Angeles	90032	323-441-0656 626-859-3004
Cathay Manor	600 N. Broadway	Los Angeles	90012	213-626-1190
Castle Argyle Apartments	1919 N. Argyle Ave.	Los Angeles	90068	323-465-2082
Columbia Apartments	1043 Kingsley Drive	Los Angeles	90230	866-355-9435
Grand Plaza Senior Apts.	601 N. Grand Ave	Los Angeles	90012	213-680-9163
Dunbar Village	4225 South Central Ave.	Los Angeles	90011	323-238-7501
Echo Park Senior Housing	1727 Morton Avenue	Los Angeles	90026	310-475-6083 213-250-5310
Ellendale Arms	2711 Ellendale Pl.	Los Angeles	90007	(323) 3911021
Crescent Arms	1709 W. 8th Street	Los Angeles	90044	213-483-2767
E. Victor Villa	555 W. 92nd Street	Los Angeles	90044	323-757-1940
Fairfax Senior Citizens Apartments	737 S. Genesee Ave.	Los Angeles	90036	(323) 456-2500
Fairfax Towers	1200 N. Fairfax Ave.	Los Angeles	90046	323-650-1271 310-204-2050 800-299-2963
Fairmont Terrace	822 N. Hazard Ave.	Los Angeles	90063	(323) 268-8474
Fame Arms	2420 S Western Avenue	Los Angeles	90230	323-870-8745
Freeman Villa	1229 S. Westmoreland Ave.	Los Angeles	90006	(213) 383-7945 323-876-9634
Fuller Avenue Housing	1627 N. Fuller Avenue	Los Angeles	90046	310-477-1476 310-870-8745
Galaxy Apartments	835 West Rosecrans Avenue	Los Angeles	90247	310-538-9160
George McDonald Court Apts.	1800 E. 92nd Street	Los Angeles	90002	323-566-8608
Good Shepard Manor	4411 S. 11th Ave.	Los Angeles	90043	323-299-5735
Gramercy Place Apts	1819 S Gramercy Place	Los Angeles	90230	877-345-1705
Grand Plaza Senior Apartments	601 N Grand Ave.,	Los Angeles	90012	213-680-9163

## SENIOR HOUSING

	Address	Qty	Zip Code	Phone
Hale Morris Lewis Apartments	1307 West 105th St.	Los Angeles	90044	323-755-1776
Hancock Gardens Apts	303 S. Van Ness Ave.	Los Angeles	90020	323-938-6646
Harvard Gardens	1938 S Harvard Blvd	Los Angeles	90230	877-282-5094
Hollywoodlands I	1438 Gordon Street	Los Angeles	90038	323-465-8957
Hollywoodlands II	5169 Marathon Street	Los Angeles	90038	323-465-8957
Hollywoodlands III	977 N Wilton Place	Los Angeles	90038	323-465-8957
Hoover Seniors	6206-6224 S. Hoover	Los Angeles	90044	323-541-0391
Jessie L. Terry Manor	3100 S. Vermont Ave.	Los Angeles	90007	323-734-1664
Jewel Terraces	1420 W 27th St.	Los Angeles	90230	866-333-6554
Kenwood Terrace	337 N. Mednick Ave.	Los Angeles	90022	323-263-9707
LA Pro XXXII Apartments	1348 W. Ingraham St.	Los Angeles	90017	(323) 213-4174
LA Posada	151 N Sunol Drive	Los Angeles	90063	323-266-8150
la Salle Fl Apartments	2011 la Salle Avenue	Los Angeles	90230	877-282-5094
Laguna Senior Apartments	4201 W. Sunset Blvd.	Los Angeles	90029	323-664-4300
Las Palmas	1778 N. Las Palmas Avenue	Los Angeles	90028	(213) 485-7535
Las Palomas Apartments	3025 Gleason Ave.	Los Angeles	90063	(626) 859-3004 323-780-4218
Los Angeles Gardens	2624 S Harvard Blvd.	Los Angeles	90230	877-644-2965
MacArthur Park Towers	450 Grand View Street	Los Angeles	90057	213-382-8395
Madison Ave. Senior Housing	1151 Madison Ave.	Los Angeles	90029	323-906-0249 310-477-1476
Main Street New Hope Courtyard	109 W. 56th St.	Los Angeles	90037	323-232-5483 213-483-2488
Manila Terrace	2328 W. Temple Street	Los Angeles	90026	800-545-1833 ext. <b>478</b>
Manhattan Gardens	1424 S Manhattan Place	Los Angeles	90230	877-345-1705 213-787-2700
Mariposa Manor	756-757 S. Mariposa Ave.	Los Angeles	90005	213-385-0340 805-495-7999 ext. 427
Masselin Senior Housing	404 Cochran Ave	Los Angeles	-	(323) 549-0328
Menorah Terrace	1123 N. Fuller Ave.	Los Angeles	90046	310-477-1476 323-850-1225
Menlo Gardens	1816 Menlo Avenue	Los Angeles	90230	877-920-3960
Mid-Town Apartments	3030 San Marino Avenue	Los Angeles	90230	<b>888-848-5723</b>
Mid-Wilshire Apts.	2826 la Salle Avenue	Los Angeles	90230	866-940-8905 310-477-1476
Miracle Mile Senior Housing	404 S. Cochran Avenue	Los Angeles	90036	323-549-0328
Morgan Place Apartments	7301 S. Crenshaw Blvd.	Los Angeles	90043	323-905-1290
Mount Zion Towers	4827 S. Central Ave.	Los Angeles	90011	323-231-9361
Mt. Moriah Senior Villa	476 W. 43rd Street	Los Angeles	90037	323-231-9361 213-272-8936 310-204-2050
New Hampshire Arms	819 S. New Hampshire Ave.	Los Angeles	90005	213-389-9332
New Hope Senior Villa	5140 S. Central Ave.	Los Angeles	-	213-231-1104
Normandie Villas	2633 S Normandie Avenue	Los Angeles	90230	866-355-9435
One Venice	1 N Venice Blvd.	Los Angeles	90291	310-821-9332
Oxford Park	1920 S. Oxford Street	Los Angeles	90018	323-731-7661
Parkview on the Park Apartments	626 South Alvarado St.,	Los Angeles	90057	213-989-0750
Pico Union Villa	1200 S. Union Ave.	Los Angeles	90015	213-738-7827
Pico-Veteran Senior Housing	10961 W. Pico Blvd.	Los Angeles	90064	310-477-1476 310-312-6096
Pico Wooster Senior Citizens	1425 S. Wooster Street	Los Angeles	90035	310-477-1476 310-271-5934
Progressive Home	7010 S. Denver Ave.	Los Angeles	90044	323-753-3427
Pilgrim Tower	1207 S Vermont Avenue	Los Angeles	90230	877-345-1711
Rittenhouse Square	1100 E. 33rd Street	Los Angeles	90011	323-432-0890
San Lucas	1221 West 7th Street	Los Angeles	90017	213-623-2010
Sharp Manor	10601 South Broadway	Los Angeles	90003	323-779-3004
St. Andrews Terrace	1525 S. St. Andrews Place	Los Angeles	90230	877-644-2965
St. James Manor	615 S. Gramercy Place	Los Angeles	90005	213-382-5391

## SENIOR HOUSING

	Address	Qty	Zip Code	Phone
St. Nicholas Cedars Manor	2323 W. 4th Street	Los Angeles	90057	213-388-8083
Stevenson Manor	1230 Cole Ave.	Los Angeles	90038	(818) 789-5550
Stovall Terrace Apartments	4075 S. Figueroa Street	Los Angeles	90037	323-235-6250
Sunset-Normandie Towers	1428 N. Normandie Ave	Los Angeles	90027	323-663-0423
Swansea Park Apartments	1015 N. Kingsley Drive	Los Angeles	90029	323-666-4313
Van Nuys Apartments	210 W. 7th Street	Los Angeles	90014	213-627-5286
Van Buren Apartmeents	2723 Van Buren Pl	Los Angeles	90230	877-920-3960
Vendome Courts	135 S. Reno Street	Los Angeles	90057	323-231-4174
Villa de la Esperanza	1401 S. Hope Street	Los Angeles	90015	213-749-4327
Villa St. Andrews	1840 S St. Andrews	Los Angeles	90230	877-345-1711
Wadsworth Place	911 E. 120th Street	Los Angeles	90059	323-567-2345
Watts Arms I	1720 E. Century Blvd.	Los Angeles	90002	323-569-2809
Ward Villas	1177 W Adams Blvd	Los Angeles	90007	213-747-1188
Wills Manor	1510 W. 27th Street	Los Angeles	90230	866-940-8905
Willowbrook Villa	4341 Willowbrook Ave.	Los Angeles	90029	323-521-5812
Wilshire Towers	616 S. Normandie Ave	Los Angeles	90005	213-381-6439
Wilton Wilshire Arms	3966 Wilshire Blvd	Los Angeles	90010	213-487-7269
Preservation V	833 S. Carondelet St.	Los Angeles	90057	(310) 374-4381
Silvercrest	5940 Carlos Ave.	Los Angeles	90028	(562) 491-8767
Tres Lomas Gardens	4343-49 Toland Way	Los Angeles	90041	323-255-4947
Villa Marisol	5301 Via Marisol	Los Angeles	90042	626-745-2826
Redwood Village	13150 Maxella Avenue	Marina Del Rey	90292	(310) 306-6488
Maywood Manor Cooperative	4650 Slauson Ave.	Maywood	90270	(323) 773-5175
Wilson Apartments	105 E. Olive Ave.	Monrovia	91016	626-348-0022
Montebello Downtown Plaza	815 West Cleveland Ave.	Montebello	90640	323-888-9759
Montebello Senior Villas	205 West Whittier Blvd	Montebello	90640	<b>323-724-6888</b>
Via Campo Senior Villas	2201 Via Campo	Montebello	90640	323-888-1194
Golden Age Village	234 N. Rural Drive	Monterey Park	91755	626-571-1807
Monterey Park Senior Village	1935 Potrero Grande Drive	Monterey Park	91755	626-573-1684
Vintage Crest Senior Apartments	4700 Park Ln.	Moorpark	93021	(805) 531-1057
Columbus Square	8561 Columbus Ave.	North Hills	91343	(310) 802-6670
Plummer Village	15450 Plummer St.	North Hills	91343	(818) 891-0646
St. Nicholas Housing Development	10220 Aqueduct Ave	North Hills	91343	(818) 894-0084
Golden Years Senior Housing	11330 Otsego St.	North Hollywood	91601	818-762-6001
North Hollywood Senior Citizens Housing	11035 Magnolia Blvd.	North Hollywood	91601	800-500-7725
Northridge Park Manor	9628 Reseda Blvd.	North Hollywood	91324	(818) 993-9236
Plummer Park Apartments	17051 Plummer St.	North Hollywood	91325	(818) 701-9554
				310-477-1476
Parthenia St. Senior Housing	19455 Parthenia Street	North Hollywood	91324	818-700-8073
Norwalk Christian Towers	14141 Clarkdale Ave.	Norwalk	90650	(562) 868-6241
Camino Del Sol Apartments	1910 Camino Del Sol	Oxnard	93030	805-278-7744
Casa Merced	840 W. 5th Street	Oxnard	93030	805-483-7122
Press Courier Senior Lofts	300 W. 9th St.	Oxnard	93030	805-754-2805
Heritage Park Apartments	820 South E. St.	Oxnard	93030	805-483-7322
Sycamore Senior Village	333 NF St.	Oxnard	93030	844-543-0983
Casa Merced Apartments	840 W. 5th St.	Oxnard	93030	805-483-7122
Pledgreville Senior Citizens Villa	11060 Norris Ave.	Pacoima	91331	(818) 897-7784
				661-272-4576; 661-947-4705
Cielo Azul Apartments or Impressions Apartrr	38040 27th Street E	Palmdale	93550	
Palmdale Gardens Apartments	3860110th St. E	Palmdale	93550	(661) 273-1874
Palo Verde Terrace	38235 10th Street E	Palmdale	93550	661-274-9726
Rancho Village	39630 Fairway Drive	Palmdale	93551	844-500-0671
Whispering Palms	38250 9th Street East	Palmdale	93551	661-267-0752
Ridgeview Manor Apartments	14620 Gledhill St.	Panorama City	91402	818-893-0622
Community Arms	169 E. Orange Grove Blvd	Pasadena	91103	626-796-8196
The Concord	275 E. Cordova Street	Pasadena	91101	626-792-1032
				626-388-1505
Heritage Square	762 N. Fair Oaks Ave.	Pasadena	91103	213-787-2748
la Pintoresca	1275 La Pintoresca Dr.	Pasadena	91103	626-797-1794
Green Hotel Apartments	50 East Green Street	Pasadena	91101	626-793-7070

## SENIOR HOUSING

	Address	Qty	Zip Code	Phone
Rosewood Court	1800 N. Fair Oaks Ave.	Pasadena	91103	626-398-6470
Pasadena Highlands	1575 E. Washington Blvd.	Pasadena	91104	626-768-7764
Pilgrim Tower North	560 E. Villa Street	Pasadena	91101	626-577-0330
Pico Rivera Gardens	6525 Rosemead Blvd.	Pico Rivera	90660	562-949-8489
Verner Villa	9220 Verner Street	Pico Rivera	90660	562-948-1852
The Woods at Playa Vista	12481 W. Fielding Circle	Playa Vista	90049	310-949-9222 424-835-4135
Emerson Village	755 Palomares	Pomona	91766	909-623-1421
Serenity Villas	158 E. Bonita Ave.	Pomona	91767	909-596-2900
Casa Pacifica	703 N. Ventura Roa	Port Hueneme	93041	805-986-2100
Casa de las Amigos	123 S. Catalina Ave.	Redondo Beach	90277	310-376-3457
Heritage Pointe	1801 Aviation Way	Redondo Beach	90278	310-318-8418
Seaside Villa	319 N. Broadway	Redondo Beach	90277	310-376-9363
Menorah Home	19206 Sherman Way	Reseda	91335	310-477-1476 818-708-0407
Reseda East	18450 Ingamar St.	Reseda	91335	(818) 342-7176
Reseda Manor	7725 Reseda Blvd	Reseda	91335	818-342-7191
California Mission Inn	4825 Earle Ave	Rosemead	91770	(626) 287-0438
Atria Rancho Park	801 Cypress Way	San Dimas	91773	626-275-4376
San Dimas Retirement	834 W. Arrow Highway	San Dimas	91773	909-599-8441
Sunnyside Senior Apartments	251 S. Walnut Ave.	San Dimas	91773	909-599-2121
Monte Vista Place	105 N. Monte Vista Ave.	San Dimas	91773	909-599-2939
Park San Dimas	265 W. Foothill Blvd.	San Dimas	91773	909-394-0333
Charter Oak Mobile Home Estates	801 W. Covina Blvd.	San Dimas	91773	909-599-2939
Cienega Valley Estates	1245 W. Cienega Ave.	San Dimas	91773	909-599-4518
Lone Hill Manor	1205 W. Cypress Ave.	San Dimas	91773	909-592-3831
Mobileland	1635 W. Covina Blvd.	San Dimas	91773	626-331-5456
San Dimas Royal	1630 W. Covina Blvd.	San Dimas	91773	626-332-2407
Casa Bonita Convalescent	535 E. Bonita Ave.	San Dimas	91773	909-599-1248
Canterbury Village	23420 Avenida Rotella	Santa Clarita - Valencia	91355	(661) 255-9797
Silvercreek	12015 Lakelands Rd.	Santa Fe Springs	90670	(562) 946-7717
Costa Azul	10829 Fulton Wells Ave.	Santa Fe Springs	90670	(562) 944-4999
Barnard Park Villas	3356 Barnard Way	Santa Monica	90405	310-399-7023
Brookdale Santa Monica	2107 Ocean Ave.	Santa Monica	90405	310-573-8697
Fourth Street Senior Housing	1116-1146 4th Street	Santa Monica	90403	310-477-1476 310-917-5004
Brookdale Santa Monica Gardens	851 2nd Street	Santa Monica	90403	844-880-3432
Lincoln Court Apts.	2807 Lincoln Blvd.	Santa Monica	90405	310-314-8269
Ocean Breeze	1458 14th Street	Santa Monica	90404	424-268-4176
Santa Monica Christian Towers	1233 6th Street	Santa Monica	90403	310-394-3017
Upward Bound Senior Villas	101111th Street	Santa Monica	90403	310-458-7779
Westminster Towers	1112 7th St.	Santa Monica	90403	323-258-3512
Wilshire House	1125 3rd St.	Santa Monica	90401	(310) 395-4545
Columbus Terrace Apartments	8606 Columbus Ave	Santa Monica	91343	(818) 893-8387
Dickens Senior Apartments	14559 Dickens St.	Sherman Oaks	91403	(818) 986-9515
Nobile Senior Housing	15100 Moorpark	Sherman Oaks	91403	310-477-1476
Sherman Oaks Senior Housing	14567 Dickens Street	Sherman Oaks	91403	310-477-1476
Sherman Arms Apartments	17760 Sherman Way	Sherman Way	91335	818-946-0471
Villa Valley Apartments	15950 Sherman Way	Sherman Ways	91406	(818) 781-7285
VPH Adult Retirement Center	15211 Sherman Way	Sherman Ways	91405	(818) 781-7285
Sherman Way Senior Housing	15864 Sherman Way	Sherman Ways	91406	310-477-1476 818-785-9765
West Valley Towers	14650 Sherman Way	Sherman Ways	91406	(818) 994-0965
Woodman Manor Apartments	6712 Woodman Ave.	Sherman Ways	91401	(310) 377-7789
Fickett Towers	14081 Sherman Way	Sherman Ways - Van Nuys	91405	<b>(818) 988-8628</b>
Harmony Terrace	941 Sunset Garden Ln.	Simi Valley	93065	(805) 522-7766
Heywood Gardens	1770 Heywood St.	Simi Valley	93065	(805) 583-8464
Las Serenas	2090 Yosemite Ave.	Simi Valley	93063	(805) 520-9542

## SENIOR HOUSING

	Address	Qty	Zip Code	Phone
Seasons	1662 Rory Ln.	Simi Valley	93063	(805) 522-7778
Patricia Village	1561 Patricia Ave.	Simi Valley	93065	(805) 583-3639
Sorrento Villas	415 Country Club Dr.	Simi Valley	93065	(805) 527-7838
Vintage Paseo	2970 Tapo Canyon Rd.	Simi Valley	93063	(805) 578-2311
Westgate	1850 Williams St. #100	Simi Valley	93065	(805) 526-9302
Pennsylvania Square	3170 Southern Ave.	South Gate	90280	323-566-5082
Burns Manor	8155 Foothill Blvd.	Sunland	91040	(818) 352-8715
Silvercrest	11840 Foothill Blvd.	Sylmar	91342	(562) 491-8767
Valley Pride Village	13200 Bromont Ave.	Sylmar	91342	818-362-2616
Atria Thousand Oaks	405 Hodencamp Road	Thousand Oaks	91360	805-273-5042
Conejo Future Apartments	130 Brazil St.	Thousand Oaks	91360	(310) 203-9199
Glenn Oaks Senior Apartments	145 E. Wilbur Rd.	Thousand Oaks	91360	(805) 494-3120
Oak Creek Senior Village	367 E. Thousand Oaks Blvd	Thousand Oaks	91360	805-273-5042
Ocean Terrace	3851 226th Street	Torrance	90505	310-373-0903
Coleman Court	1421 Cravens Avenue	Torrance	90501	310-212-5898
Golden West Tower	3510 W. Maricopa Street	Torrance	90503	310-371-4801
JCI Gardens	2000 W. 162nd Street	Torrance	90504	310-515-3642
Ocean Terrace	3851 226th Street	Torrance	90505	310-373-0903
Foothill Gardens	7687 Foothill Blvd.	Tujunga	91042	(818) 352-1307
Tujunga Gardens	6643 Foothill Blvd.	Tujunga	91042	(818) 352-1307
Valencia Villa Apartments	25857 Singing Hills Dr.	Valencia	91355	(310) 204-2050
Sherman Way Senior Housing	15864 Sherman Way	Van Nuys	91406	(818) 785-9765
Adda & Paul Safran Senior Housing	151 Ocean Front Walk	Venice	90291	(310) 450-9545
One Venice	One N Venice Blvd.	Venice	90291	(310) 821-9332
Cypress Place Senior Living	1220 Cypress Point Lane	Ventura	93003	
Silvercrest Ventura	750 Petit Ave.	Ventura	93004	805-647-0110
Lark Ellen Village	1350 E. San Bernardino Road	West Covina	91790	626-732-3939
Olive Tree Terrace	721 N. Azusa Ave.	West Covina	91791	626-967-1656
Vintage Gardens	1950 E. Badillo Street	West Covina	91791	626-967-5631
Heritage Park Senior Apartments	1800 W. Badillo Street	West Covina	91790	626-813-0233
West Covina Senior Villas	1842 Workman Avenue	West Covina	91791	626-331-0208
West Covina Senior Villas I	1838 Workman Ave.	West Covina	91791	626-331-7100
Movietown Square	7302 Santa Monica Blvd.	West Hollywood	90046	323-356-3330
Affordable Living for the Agin	937 N. Fairfax Avenue	West Hollywood	90046	323-650-7988
Kings Road Apartments	800 Kings Road	West Hollywood	90069	323-653-3090
				310-850-1225
Menorah Terrace	1123 N. Fuller Ave.	West Hollywood	90046	310-477-1476
Brookdale Central Whittier	8101 Painter Ave.	Whittier	90602	844-662-0993
Emeritus at Chateau Whittier	13250 E. Philadelphia Street	Whittier	90601	844-344-4049
Leffingwell Manor	11410 Santa Gertrudes Ave.	Whittier	90604	562-947-1334
Whittier Lutheran Towers	7215 Bright Ave.	Whittier	90602	562-693-1353
Whittier Place Senior Living	12315 Burgess Avenue	Whittier	90604	562-777-1477
William Penn Manor	7025 Friends	Whittier	90602	562-945-1344
Hoover Hotel	7035 Greenleaf	Whittier	90602	562-696-1848
Whispering Fountains	12251 Washington	Whittier	90606	562-698-6576
Lazy Spokes Trailer Park	109311st. Ave	Whittier	90603	562-947-1314
Don Senior Apartments	105 East I Street	Wilmington	90744	310-549-3338
Wilmington Gardens	1311 W. Anaheim Street	Wilmington	90744	310-835-6366
Owensmouth Gardens	6300 Owensmouth Ave.	Woodland Hills	91367	(818) 715-1750
TELACU	refer to pdf			

**RESOURCE: Helping Hands Senior Foundation 818-279-6580 can help place seniors in affordable housing as well as connect seniors to community resources.**

**LIVING OPTIONS GUIDE:**

Independent Living: \$550- 1,300 per month for shared room; \$1,000-2,300 per month for private room. Typical placement takes 2-4 weeks.

Assisted Living: SSI rate and up for shared room; \$1,800-2,500 per month for private room. Typical placement takes 2-4 weeks.

Skilled Nursing Facility: Placement covered by insurance and social security with no out of pocket cost per month. Shared room only. Placement within 1-4 weeks.

## VETERAN HOUSING

Property	Address	City	Zip Code	Phone	
Plaza on Main	333 West Main Street	Alhambra	91801	626-289-5800	Senior Veterans Only
Altadena Vista Senior Apartments	815 E. Calaveras St.	Altadena	91001	323-564-0237	Senior Veterans Only
Villa Azusa Senior Apartments	200 E. Gladstone St.	Azusa	91702	626-969-2711	Senior Veterans Only
Soldano Senior Village	450 N Soldano Ave.	Azusa	91702	626-334-3383	Senior Veterans Only
Coco Capri Apartments	4001 Coco Ave.	Baldwin Hills	90008	310-450-8785	Veteran
The Oaks on Florence	4224 Florence Avenue	Bell	90201	(323)-560-1222	Senior Veterans Only
Terra Bella	5720 Clara St.	Bell Gardens	90201	562-927-3900	Senior Veterans Only
Park View Terrace	6728 Clara St.	Bell Gardens	90201	562-928-0348	Senior Veterans Only
Artesia Blvd. Apartments	8808 Artesia Blvd.	Bellflower	90706	562-637-6191	Veteran
Canyon Creek	4803 B Canon Ave.	Bellflower	91302	310-820-4888 8182258298	Senior Veterans Only
Bellflower Terrace Senior Apartments	16322 Bellflower Blvd.	Bellflower	90706	(562) 866-8866	Senior Veterans Only
Saticoy Street Apartments	21618 Saticoy St.	Canoga Park	91303-91304	818-887-6920	Veteran
Hart Village Apartments	6941 Owensmouth Ave.	Canoga Park	91303-91304	818-704-5983	Veteran
Tierra del Sol Apartments	7500 Alabama Ave.	Canoga Park	91303-91304	818-887-6920	Veteran
Vintage Crossing Senior Apartments	6830 Jordan Ave.	Canoga Park	91303	818-596-0921	Senior Veterans Only
Las Casitas	21513 Valerio St.	Canoga Park	91303-91304	818-887-6920	Senior Veterans Only
Camino Village Senior Apartments	21735 S. Main St.	Carson	90745	310-835-1899	Senior Veterans Only
Castaic Lake Senior Village	31990 Castaic Rd.	Castaic	91384	661-295-9599	Senior Veterans Only
My Serenity Villa	20615 Mayall St.	Chatsworth	91311	323-327-8554	Veteran
Claremont Villas Senior Apartments	100 S. Indian Hill Blvd.	Claremont	91711	909-625-2424	Senior Veterans Only
Clela Apartments	1243 S. Clela Avenue	Commerce	90022	323-503-9534	Veteran
Douglas Park Apartments	1108 N. Culver Ave.	Compton	90220-90222	310-603-1944	Veteran
Santa Fe Apartments	1912 N. Santa Fe Ave.	Compton	90220-90222	323-231-1107	Veteran
Mosaic Gardens at Willowbrook	2213 E. B Segundo Blvd.	Compton	90220-90222	213-787-2701	Veteran
	12612 S. Wilmington Ave.	Compton	90220-90222	310-635-1557	Veteran
Jones Properties	219 E. Alondra Blvd.	Compton	90220-90222	310-962-0599	Senior Veterans Only 55+
The Metro@ Compton Senior Apartments	302 N. Tamarind Ave.	Compton	90220-90222	424-345-2106	Senior Veterans Only
Ramona Estates	1935 E. 122nd St.	Compton	90220-90222	310-604-0392	Senior Veterans Only
Covina Gardens	200 W. Rowland St.	Covina	91723	626-967-4768	Senior Veterans Only
Elizabeth Court	5225 Elizabeth Pl.	Cudahy	90201	323-562-2708	Veteran
Clara Park Commons for Seniors	4805 Clara St.	Cudahy	902021	323-560-7628	Veteran
Sunshine Apartments	8780 Stamps Rd.	Downey	90241	562-343-5961	Veteran
Adco Apartments	11528 Adco Ave.	Downey	90241	562-595-6111	Veteran
Terrace Regency	11410 Dolan Ave.	Downey	90241	714-717-3357	Senior Veterans Only
Heritage Park Senior Apartments	915 Highland Ave.	Duarte	91010	626-357-5118	Senior Veterans Only
Rockview Apartments	1139 Colorado Blvd.	Eagle Rock	90041	323-258-5320	Senior Veterans Only
B Monte Veterans Village Apartments - OPENN WAIT LIST	11240 Ramona Blvd.	B Monte	91731-91733	626-377-9901	Veterans with Discharge Status of Honorable or Other- than-Honorable and eligible to receive VA Health Benefits; Chronically Homeless; Referrals only
Baldwin Rose Veterans Apartments - OPEN WAIT LIST	9953 Rose Ave.	B Monte	91731-91733	(626) 600-4206	Veterans; Families with Veteran as Head of Household
Tyler Court Senior Apartments	3348 Tyler Ave.	B Monte	91731-91733	626-444-4960	Senior Veterans Only
Palo Verde Apartments	4704 Peck Rd.	B Monte	91731-91733	888-227-8501	Senior Veterans Only
Balboa Grande Apartments	10620 Balboa Blvd.	Granada Hills	91344	818-831-1432	Veteran
Glenmary	4733 N. Figueroa St.	Highland Park	90042	323-258-5320	Senior Veterans Only
Chateau Carlton Apartments	6040 Carlton Way	Hollywood	90028	310-556-1543	Veteran
Met West	5837 W. Sunset Blvd.	Hollywood	90028	323-295-2000 Ext. 16110	Veteran
Selma Community Housing	1605 N. Cherokee Ave.	Hollywood	90028	323-499-1727	Veteran
Eastown Apartments	6201 Hollywood Blvd.	Hollywood	90028	323-960-2500	Veteran
Kenmore Apartments	1726 N. Kenmore Ave.	Hollywood	90028	323-664-4986	Veteran
Mosaic Gardens at Huntington Park	6337 Middleton St.	Huntington Park	90255	323-588-1832	Veteran
Casa Bonita Senior Apartments	6512 Rugby Ave.	Huntington Park	90255	323-581-1600	Senior Veterans Only
Seville Gardens Apartments	2701 Randolph St.	Huntington Park	90255	310-533-5000	Senior Veterans Only
Westside Residences for Veterans	725 S. Hindry Ave	Inglewood	90301-90305	310-496-8132	Veteran
Sunny Gardens Seniors Apartments	13712 E. Sunkist Dr.	La Puente	91744-91746	626-960-1219	Senior Veterans Only
La Puente Gardens Senior Apartments	17341 Hurley St.	La Puente	91744-91746	626-964-6040	Senior Veterans Only
Lake Balboa	6525 Woodley Ave.	Lake Balboa	91406	310-466-0131	Veteran
Amanda Regency Apartments	6805 Louise Ave.	Lake Balboa	91406	818-345-8800	Veteran
Lakeview Terrace Silvercrest	11850 Foothill Blvd.	Lake View Terrace	91342	818-896-7580	Senior Veterans/ Hearing accessible unit - waitlist open
Seasons I Senior Apartments	21309 Bloomfield Ave.	Lakewood	90715	562-809-3456	Senior Veterans Only
Kensington Campus I	45244 32nd St. W.	Lancaster	93534	323-334-9000	Veteran
Arbor Fields Apartments	530 W. Jackman St.	Lancaster	93534	661-942-0026	Veteran
Ima2ine Villa2e	43517 Sahuayo St.	Lancaster	93534	213-225-2728	Veteran

## VETERAN HOUSING

Property	Address	City	Zip Code	Phone	
Cedar Ridge	2105 E. Avenue	Lancaster	93534	661-723-7538	Veteran
Arbor Court	44916 N. 10th St. W.	Lancaster	93534	661-449-1660	Senior Veterans Only
Arbor Grove Senior Apartments	855 W. Jackman St.	Lancaster	93534	661-949-6206	Senior Veterans Only
Arbor Gardens	710 W. Kettering St.	Lancaster	93534	661-723-9015	Senior Veterans Only
Aurora Village II Senior Community	43945 12th St. W.	Lancaster	93534	661-948-0860	Senior Veterans Only
Belmont Shores	5465 E. 2nd. St.	Long Beach	90803-90813	310-872-8686	Veteran
Cabrillo Plaza (Casa de Cabrillo)	2001 River Ave.	Long Beach	90803-90813	562-388-8107	Veteran
City View	3333 Pacific Pl.	Long Beach	90803-90813	562-426-6547	Senior Veterans Only
Elm Terrace Apartments	1100 Elm Ave.	Long Beach	90803-90813	562-491-0088	Senior Veterans Only
The Cleo Apartments	345 S. Alexandria Ave.	Los Angeles	90012-91303	213-389-1050	Veteran
Hillside Villa Apartments	636 N. Hill Pl.	Los Angeles	90012-91303	213-952-9999	Veteran
LA Plaza Village	555 N. Spring St.	Los Angeles	90012-91303	213-810-1198	Veteran
Cochran City Lights	1315 S. Cochran Ave.	Los Angeles	90012-91303	323-936-6497	Veteran
Silver Star Apartments	6570 West Blvd.	Los Angeles	90012-91303	213-817-7357	Veteran
Alessio Apartments	5700 W. Centinela Ave	Los Angeles	90012-91303	833-569-2528	Veteran
Lofts at Noho Commons	11136 Chandler Blvd.	Los Angeles	90012-91303	818-827-3100	Veteran
Florence Morehouse Apartments	11750 W. Martin Luther King Jr. B	Los Angeles	90012-91303	323-531-2667	Veteran
DTLA California Castle	1980 Estrella Ave.	Los Angeles	90012-91303	323-472-1197	Shared room
Minnie's Shell	1341 W. 53rd St.	Los Angeles	90012-91303	310-704-8705	Shared housing for single women / Shared bedroom/ 2 beds per room
Gower Street Apartments	1140 N. Gower St.	Los Angeles	90012-91303	323-467-3449	Homeless Veteran/ Special needs housing
Wilson Apartments	105 E. Olive Ave.	Monrovia	91016	626-398-0022	Senior Veterans Only
Pacific Housing Development	322 E. Newmark Ave.	Monterey Park	91755	323-838-8556	Veteran
Orion Gardens	8955 N. Orion Ave.	North Hills	91343	<b>818-892-2481</b>	Veteran
Casa Familiar de Nordhoff	15543 Nordhoff St.	North Hills	91343	818-892-6220	Veteran
Colony Cove IV HOA	8505 Columbus Ave.	North Hills	91343	805-587-1572	Veteran
Apple Tree Village Apartments	9229 N. Sepulveda Blvd.	North Hills	91343	818-920-9960	Veteran
Valley View Apartments	9015 Orion Ave.	North Hills	91343	818-894-5771	Veteran
Columbus Square Apartments	8561 Columbus Ave.	North Hills	91343	<b>818-891-9898</b>	Veteran
Huston Court	11120 Huston St.	North Hollywood	91601-91606	818-350-1600	Veteran
Laurel Courtyard	7651 Laurel Canyon Ave.	North Hollywood	91601-91606	818-901-6019	Veteran
The Ivy at NOHO	11011 Otsego St.	North Hollywood	91601-91606	818-860-4111	Veteran
Aura NoHo	11430 Burbank Blvd.	North Hollywood	91601-91606	818-350-1600 Ext. 605	Veteran
nVe NoHo	11405 Chandler Blvd.	North Hollywood	91601-91606	818-505-8070	Veteran
Living at Noho	11049 W. McCormick	North Hollywood	91601-91606	818-508-6565	Veteran
Denny Place Apartments	5620 Denny Ave.	North Hollywood	91601-91606	818-985-8768	Veteran
Willow Wood Apartments	5104 Denny Ave.	North Hollywood	91601-91606	818-985-8768	Veteran
BlixVillas	10900 Blix St.	North Hollywood	91601-91606	213-407-3772	Veteran
Pravada East	7526 Simpson Ave.	North Hollywood	91601-91606	909-278-0475	Veteran
Coldwater Apartments	6333 Coldwater Canyon	North Hollywood	91601-91606	818-985-5274	Veteran
Hamlin Estates Apartments	11735 Hamlin St.	North Hollywood	91601-91606	818-985-8768	Veteran
Simpson Saticoy Apartments	7541 Simpson Ave.	North Hollywood	91601-91606	818-765-3182	Senior Veterans Only
Sophia Ridge Apartments	9016 Reseda Blvd.	North ridge	91324	818-773-9444	Veteran
Moonlight Villas	12381 Osborne St.	Pacoima	91331		Veteran
Osborne Gardens Apartments	12360 Osborne St.	Pacoima	91331	818-899-0755	Veteran
Palmdale Garden Apartments	3860110th St. E	Palmdale	93550	661-273-1874	Senior Veterans Only
Asturias Senior Apartments	9628 Van Nuys Blvd.	Panorama City	91402	818-830-5100	Senior Veterans Only
Cantabria Senior Apartments	9640 Van Nuys Blvd.	Panorama City	91402	818-891-7200	Senior Veterans Only
Regency 50 Apartments	14540 Blythe St.	Panorama City	91402	818-988-9515	Senior Veterans Only
Parthenia II Apartments	14920 Parthenia St.	Panorama City	91402	818-891-8813	Senior Veterans Only
Town Center Terrace	16200 Vermont Ave.	Paramount	90723	562-408-0801	Senior Veterans Only
Cordova Park Villa	330 Cordova St.	<b>Pasadena</b>	91101-91103	608-385-8563	Veteran
Rosewood Court	1888 N. Fair Oaks Ave.	<b>Pasadena</b>	91101-91103	626-398-6470	Senior Veterans Only
Centennial Place	235 E. Holly St.	<b>Pasadena</b>	91101-91103	626-585-0009	Must apply through Union Station Homeless Services
Fountain Park Apartments	13141 Fountain Park Dr.	Playa Vista	90094	310-437-6160	Veteran
Crescent Park	5710 Crescent Park E.	Playa Vista	90094	310-347-6050	Veteran
Baird Apartments	7820 Baird Ave.	Reseda	91335	818-345-1193	Veteran
San Pedro New Hope Courtyard	1124 S. Palos Verdes St.	San Pedro	90721	310-831-6851	Veteran
Pacific Avenue Arts Colony	303 S. Pacific Ave.	San Pedro	90721	310-221-0019	Veteran
Toberman Village	142 W. Santa Cruz St.	San Pedro	90721	310-519-0774	Veteran
California Hotel	1140 S. Pacific Ave.	San Pedro	90721	310-514-0172	Veteran
Santa Cruz Terrace	201 N. Beacon St.	San Pedro	90721	310-519-0774	Veteran
Santa Monica New Hope Apartments	1637 Appian Way	Santa Monica	90401	310-395-1026	Veteran
Sherman Oaks Place	5100 Woodman Ave.	Sherman Oaks	91423	818-923-0555	Veteran
Sierra Vista Senior Apartments	70 Esperanza Ave.	Sierra Madre	91024	818-763-0810	Senior Veterans Only
Holly Dale Senior Apartments	12222 Garfield Ave.	South Gate	90280	562-529-5900	Senior Veterans Only
Villa Del Sol	11971 Alleigheny St.	Sun Valley	91352	818-768-1719	Veteran

## VETERAN HOUSING

<u>Property</u>	<u>Address</u>	<u>City</u>	<u>Zip Code</u>	<u>Phone</u>	
Strathern Park East Apartments	11047 Strathern St.	Sun Valley	91352	818-768-4424	Veteran
Burns Manor Apartments	8155 Foothill Blvd.	Sunland	91040	818-352-8715	Senior Veterans Only
Cosmo Residential	12455 San Fernando Rd.	Sylmar	91342	818-415-9509	Veteran
Oakridge Homes	15455 Glenoaks Blvd.	Sylmar	91342	818-362-5000	Veteran
Harbour Community Apartments	12157 San Fernando Rd.	Sylmar	91342	818-364-7039	Veteran
Olive Manor Senior Apartments	13115 Bromont Ave.	Sylmar	91342	818-833-0298	Senior Veterans Only
Budlong Manor	11998 Terra Bella St.	Sylmar	91342	818-896-9728	Senior Veterans Only
Valley Pride Village Apartments	13200 Bromont Ave.	Sylmar	91342	818-362-2616	Senior Veterans Only
Day Street Apartments	7639 W. Day Street	Torrance	90502	818-255-2785	Veteran
Alta South Bay	22344 S. Vermont Ave.	Torrance	90502	424-244-3025	Senior Veterans Only
BlixVillas	14745 Blythe St.	Van Nuys	91401-91406	213-407-3772	Veteran
The Summit On Woodman	7354 Woodman Ave.	Van Nuys	91401-91406	818-860-9286	Veteran
Sepulveda Place Apartments	7317 Sepulveda Blvd.	Van Nuys	91401-91406	818-961-7076	Veteran
Oaktree Village Apartments	15231 Sherman Way	Van Nuys	91401-91406	213-380-7935	Veteran
Archwood Court	6740 Hazeltine Ave.	Van Nuys	91401-91406	818-350-1600 Ext. 605	Veteran
Angels City Lights	13915 W. Oxnard St.	Van Nuys	91401-91406	818-988-0275	Veteran
Greenbush Villas	13426 Vanowen St.	Van Nuys	91401-91406	818-480-0190	Veteran
Ivy Terrace Apartments	13751 Sherman Way	Van Nuys	91401-91406	213-222-1001	Veteran
Crest Apartments	13604 W. Sherman Way	Van Nuys	91401-91406	818-672-7623	Veteran
RHF Vistas Apartments	15211 Sherman Way	Van Nuys	91401-91406	818-786-1503	Senior Veterans Only
RHF West Valley Towers	14650 Sherman Way	Van Nuys	91401-91406	(818) 786-0113	Senior Veterans Only
Andalucia Senior Apartments	15305 Lanark St.	Van Nuys	91401-91406	818-756-0000	Senior Veterans Only
La Coruna	15305 Lanark St.	Van Nuys	91401-91406	818-756-0000	Senior Veterans Only
Adda and Paul Safran Senior Housing	151 Ocean Front Walk	Venice	90291	310-450-9545	Senior Veterans Only
Imani Fe Apartments	10424 S. Central Ave.	Watts	90002	323-249-0732	Veteran
Detroit Family Apartments	1155 N. Detroit St.	West Hollywood	90046	323-650-8771	Veteran
Whittier Terrace Apartments	11445 Santa Gertrudes Ave.	Whittier	90604	818-888-5218	Veteran
Vista del Mar	1116W. DSt.	Wilmington	90744	562-755-7760	Veteran
New Dana Strand Townhomes	450 King Ave.	Wilmington	90744	310-241-6867	Veteran
Roscoe Apartments	450 King Ave.	Wilmington	90744	310-549-4138	Veteran
Roscoe Apartments	20234 Roscoe Blvd.	Winnetka	91306	818-960-2063	Veteran
Winnetka Village - Senior Apartments	20750 Sherman Way	Winnetka	91306	818-710-1305	Senior Veterans Only
Bella Vista	6150 De Soto Ave.	Woodland Hills	91367	909-865-2470	Veteran

# HOUSING RESOURCES & PROGRAMS

This section provides information about financial assistance, temporary shelters, transitional programs, and other housing resources.



## Public Housing Authorities

These government agencies run public housing and/or housing assistance programs, including Section 8, in the Los Angeles and Ventura areas. **Contact these agencies to apply for housing assistance.**

---

### Los Angeles County

#### **Baldwin Park Housing Authority**

14403 E. Pacific Ave.  
Baldwin Park, CA 91706  
626-869-7500 Office  
626-813-5285 Application Line

#### **Burbank Housing Authority**

150 N. 3rd Street  
Burbank, CA 91510  
818-238-5160

#### **Compton Housing Authority**

700 N. Bullis Rd.  
Compton, CA 90221  
310-605-3080

#### **Culver City Housing Authority**

9770 Culver Blvd.  
Culver City, CA 90232  
310-253-5780

#### **Glendale Housing Authority**

141 N. Glendale Ave. Ste. 202  
Glendale, CA 91026  
818-548-3936

#### **Hawaiian Gardens Housing Authority**

21815 Pioneer Blvd  
Hawaiian Gardens, CA 90716 562-420-  
2641 x 270

#### **Hawthorne Dept. of Housing & Community Development**

4455 W. 126th Street Hawthorne, CA  
90250  
310-349-1603

#### **Inglewood Housing Authority**

1 W. Manchester Blvd., Suite 750  
Inglewood, CA 90301  
310-412-5221

#### **Long Beach Housing Authority**

521 East 4th Street  
Long Beach, CA 90802  
562-570-6985

#### **Housing Authority of the City of Los Angeles**

2600 Wilshire Blvd.  
Los Angeles, CA 90057  
213-252-2500

#### **Los Angeles County Development Authority**

700 W. Main Street  
Alhambra, CA 91801  
(800) 731-4663  
(626) 262-4510

#### **Los Angeles County Development Authority - Antelope Valley**

2323 Palmdale Blvd., Suite B  
Palmdale, CA 93550  
661-575-1511

#### **Norwalk Housing Authority 12700**

Norwalk Blvd. Room 11  
Norwalk, CA 90650  
562-929-5588

#### **Pasadena Housing Authority**

649 N. Fair Oaks Ave. Suite 202  
Pasadena, CA 91103  
626-744-8300

#### **Pico Rivera Housing Authority**

6615 Passons Blvd.  
Pico Rivera, CA 90660  
562-801-4347

#### **Pomona Housing Authority**

505 S. Garey Ave.  
Pomona, CA 91769  
909-620-2368

**Redondo Beach Housing Authority**  
1922 Artesia Blvd.  
Redondo Beach, CA 90278  
(310) 318-0635

**South Gate Housing Authority**  
8650 California Avenue  
South Gate, CA 90280  
323-563-9599

**Santa Monica Housing Authority**  
1901 Main St. Suite C  
Santa Monica, CA 90405  
310-458-8740

**Torrance Housing Authority**  
3031 Torrance Blvd.  
Torrance, CA 90503  
310-618-5840

**Ventura County**

**Oxnard Housing Authority**  
435 South D Street Oxnard, CA 93030  
805-385-8041

**Port Hueneme Housing Authority**  
250 N. Ventura Road  
Port Hueneme, CA 93041 805-986-6527

**San Buenaventura Housing Authority**  
995 Riverside Street  
Ventura, CA 93001  
805-648-5008

**Santa Paula Housing Authority**  
15500 West Telegraph Road, Suite B-11  
Santa Paula, CA 93060  
805-525-3339

**Ventura County Housing Authority**  
1400 W. Hillcrest Dr.  
Newbury Park, CA 91320  
805-480-9991

# LOS ANGELES COUNTY HOMELESS ACCESS CENTERS DIRECTORY



LAST UPDATED: MAY 6, 2025

## ACCESS ACROSS THE COUNTY

The Los Angeles Homeless Services Authority (LAHSA) and its funded agencies, in partnership with the City and County of Los Angeles, work to ensure that persons experiencing homelessness can continue to access critical services at Access and Navigation Centers to **meet their basic needs, access emergency services, and obtain referrals to housing resources** including those available through the **LA County Coordinated Entry System (LA CES)**.

## WHAT TO EXPECT AT AN ACCESS CENTER?

Homeless Access Centers are call-in or drop-in locations where persons experiencing homelessness can gain initial access to or continue contact with housing and supportive services available through LA CES. Access Centers can provide referrals to:

- Interim Housing programs for persons experiencing unsheltered homelessness;
- emergency services (domestic violence, emergency physical/mental healthcare) and other supportive services (mental health, workforce development, etc.); and
- to or, direct provision of, basic services such as food provision, storage, and hygiene services.

## FIND AN ACCESS CENTER

Connect to an Access Center by following these 3 steps:

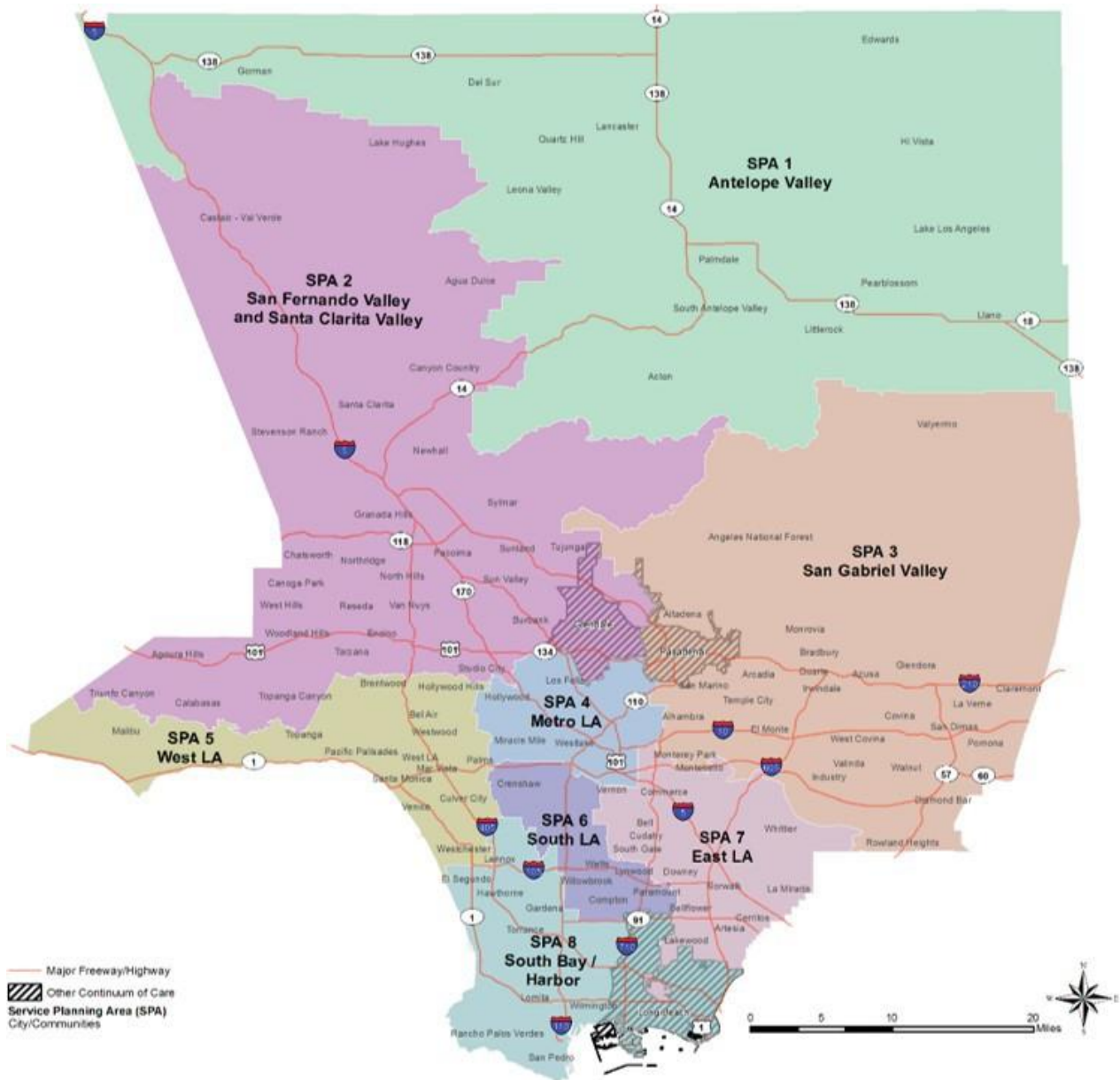
- 1 Identify your Service Planning Area (SPA), as shown on the map on page 2 of this document.
- 2 Find an Access Center based on the population that best describes you:
  - Adults (18 years old and over)
  - Families with minor children or with pregnant adults
  - \*Youth (18-24 years old)
- 3 Contact an Access Center based on "Operation Hours" and related contact information.

*\*Youth-aged families (where one head of household is 24 or younger) can be served in either the family system or the Youth system.*

**Note: Please note that operating times/days can change. If you have access to a phone, please call to confirm in advance.**

For more information and referrals for all health and human services, please dial 2-1-1, call (800) 399-6993, or visit [211LA.org](https://211LA.org). The 2-1-1 phone line is open 24 hours, 7 days a week.

# SERVICE PLANNING AREAS (SPAS)



- SPA 1** - Antelope Valley
- SPA 2** - San Fernando & Santa Clarita Valley
- SPA 3** - San Gabriel Valley
- SPA 4** - Metro Los Angeles

- SPA 5** - West Los Angeles
- SPA 6** - South Los Angeles
- SPA 7** - East Los Angeles
- SPA 8** - South Bay/Harbor City



# HOMELESS ACCESS CENTERS FOR ADULTS

## Adults (18 years old and over)

Homeless Access Center	Contact Phone	Address	Operating Hours	Pop. Served	SPA
The Salvation Army – Antelope Valley	(661) 948-3418	44517 Sierra Highway, Lancaster, CA 93534	<b>Mon-Fri</b> 9:00am - 4:00pm	Adults	1
Hope of the Mission	(818) 392-0020	6425 Tyrone Avenue, Van Nuys, CA 91401	<b>Mon-Fri</b> 8:00am - 3:30pm	Adults	2
San Fernando Valley Community Mental Health Center (Jorge Vega Center for Hope)	(818) 901-4836	16650 Sherman Way, Van Nuys, CA 91406	<b>Mon-Fri</b> 8:00am - 5:00pm	Adults	2
Volunteers of America - El Monte	(626) 442-4357	4501 Santa Anita Avenue, El Monte, CA 91731	<b>Mon-Fri</b> 8:00am - 4:30pm	Adults	3
Downtown Women’s Center	(213) 680-0600	442 S. San Pedro Street, Los Angeles, CA 90013	<b>7 days a week</b> 8:00am-3:00pm <b>Except Thursday’s</b> 8:00am-1:00pm	Adults – Women Only	4
Weingart Center	(213) 833-5020	501 E. 6 <sup>th</sup> Street, Los Angeles, CA 90021	<b>Mon-Fri</b> 7:30am – 5:30pm	Adults	4
The Midnight Mission	(213) 624-9258	601 S. San Pedro Street, Los Angeles, CA 90014	<b>24 hours 7 days a week</b>	Adults	4
The Salvation Army – Hollywood	(323) 337-1666	5941 Hollywood Blvd., Los Angeles, CA 90028	<b>Mon-Fri</b> 8:30am - 4:00pm	Adults	4
St. Joseph Center	(310) 399-6878	404 Lincoln Blvd., Venice, CA 90291	<b>Mon-Thurs</b> 8:00am - 4:00pm	Adults	5
The People Concern	(310) 450-4050	503 Olympic Blvd., Santa Monica, CA 90401	<b>Mon, Wed-Fri</b> 9:00am – 5:00pm <b>Tues</b> 1:00pm - 5:00pm <b>Sat-Sun</b> 9:00am – 12:00pm <b>(Closed 1<sup>st</sup> and 2<sup>nd</sup> Wed/month)</b>	Adults	5

# HOMELESS ACCESS CENTERS FOR ADULTS

## Adults (18 years old and over)

Homeless Access Center	Contact Phone	Address	Operating Hours	Pop. Served	SPA
SSG/HOPICS	(323) 948-0444	5849 Crocker St. Unit X Los Angeles, CA 90003	<b>Mon-Fri</b> 8:00am - 4:30pm	Adults	6
SSG/HOPICS (Navigation Center)	(323) 814-9100 ext. 711	729 W. Manchester Avenue, Los Angeles, CA 90044	<b>Mon-Fri</b> 7:30am – 5:00pm <b>Sat</b> 10:00am – 2:00pm	Adults	6
Watts Labor Community Access Center	(323) 563-4721	958 E. 108 <sup>th</sup> Street, Los Angeles, CA 90059	<b>Mon-Fri</b> 8:00am – 4:30pm	Adults	6
American Family Housing	(562) 378-5552	11550 Colima Road, Whittier, CA 90604	<b>Mon-Fri</b> 8:00am – 5:00pm	Adults	7
Harbor Interfaith Services	(424) 276-3602	599 W. 9 <sup>th</sup> Street, San Pedro, CA 90731	<b>Mon-Fri</b> 8:30am - 5:30pm	Adults	8

# HOMELESS FAMILY SOLUTIONS CENTERS

## Families with minor children or with pregnant adults

Homeless Access Center	Contact Phone	Address	Operating Hours	Pop. Served	SPA
Valley Oasis	(661) 239-9300	310 Palmdale Blvd., Ste. A, Palmdale, CA 93550	<b>Mon-Fri</b> 8:00am - 5:00pm <b>Walk-in Hours</b> <b>Mon-Fri</b> 8:00am - 10:00am 1:00pm - 3:00pm	Families with minor children or pregnant adults	1
LA Family Housing	(818) 255-2766	7817 Lankershim Blvd., North Hollywood, CA 91605	<b>Mon-Fri</b> 8:00am - 5:00pm <b>Walk-in Hours</b> <b>Mon-Fri</b> 8:00am - 5:00pm	Families with minor children or pregnant adults	2
Union Station Homeless Services	(626) 337-0140	16029 Arrow Highway, Ste. G, Irwindale, CA 91706	<b>Mon-Fri</b> 8:00am - 5:00pm <b>Walk-in Hours</b> <b>Mon-Fri</b> 1:00pm – 4:00pm	Families with minor children or pregnant adults	3
PATH	(323) 212-6285	3323 W. Washington Blvd., Los Angeles, CA 90018	<b>Mon-Fri</b> 8:30am - 5:00pm <b>Walk-in Hours</b> <b>Mon-Fri</b> 8:30am - 12:30pm 1:00pm – 4:30pm	Families with minor children or pregnant adults	4
St. Joseph's Center	(310) 694-6035	12420 Venice Blvd., Los Angeles, CA 90066	<b>Mon-Fri</b> 8:00am - 4:30pm <b>Walk-in Hours</b> <b>Mon-Fri</b> 8:30am - 4:00pm	Families with minor children or pregnant adults	5
HOPICS	(323) 432-4399	5849 Crocker Street, Los Angeles, CA 90003	<b>Mon-Fri</b> 8:30am - 5:00pm <b>Walk-in Hours</b> <b>Mon-Fri</b> 8:30am - 4:30pm	Families with minor children or pregnant adults	6
The Whole Child	(562) 204-0640	8630 Florence Avenue, Downey, CA 90240	<b>Mon-Fri</b> 8:00am -5:00pm <b>Walk-in Hours</b> <b>Mon-Fri</b> 8:00am - 12:00pm, 1:00pm – 4:00pm	Families with minor children or pregnant adults	7
Harbor Interfaith Services	(310) 831-0589	800 Gaffey Street, San Pedro, CA 90731	<b>Mon-Fri</b> 8:30am - 5:30pm <b>Walk-in Hours</b> <b>Mon-Fri</b> 8:30am - 5:00pm	Families with minor children or pregnant adults	8

# HOMELESS ACCESS CENTERS FOR YOUTH

## Youth (18-24 years old)

Homeless Access Center	Contact Phone	Address	Operating Hours	Pop. Served	SPA
Volunteers of America - Lancaster	(661) 952-7095	154 E. Avenue, Lancaster, CA 93535	<b>Mon-Fri</b> 8:00am – 4:30pm	Youth	1
Volunteers of America – North Hollywood	(818) 691-5506 (213) 610-7531	10750 Burbank Blvd., North Hollywood, CA 91601	<b>Mon-Fri</b> 8:00am - 4:30pm	Youth	2
Hillsides / YMO	(626) 765-6010	456 E. Orange Grove Blvd., Suite 140, Pasadena, CA 91104	<b>Mon &amp; Fri</b> 9:00am - 5:30pm <b>Tue &amp; Thu</b> 11:00am – 8:00pm <b>Wed</b> 11:30am -5:00pm	Youth	3
LA LGBT Center	(323) 860-2280	1118 N. McCadden Place, Los Angeles, CA 90038	<b>Mon-Fri</b> 7:30am - 3:30pm <b>Sat-Sun</b> 7:30am - 1:30pm	Youth	4
My Friend’s Place	(323) 908-0011 ext. 100	5850 Hollywood Blvd., Los Angeles, CA 90028	<b>Mon &amp; Wed</b> 10:00am - 11:30am 1:00pm – 4:00pm <b>Tue &amp; Fri</b> 10:00am – 11:30am 1:00pm – 3:00pm <b>Thurs</b> 1:00pm -4:00pm	Youth	4
Safe Place for Youth	(310) 902-2283	340 Sunset Avenue, Venice, CA 90291	<b>Mon</b> 9:30am – 1:00pm <b>Tues-Thurs</b> 10:00am - 1:00pm, 2:00pm – 4:30pm <b>Fri</b> 10:30 – 4:30pm	Youth	5
CRCD/Ruth’s Place	(323) 432-2440	4201 S. Central, Los Angeles, CA 90011	<b>Mon-Fri</b> 9:00 - 4:30pm	Youth	6
Jóvenes, Inc.	(323) 621-2213	9826 Painter Avenue, Unit M, Whittier, CA 90605	<b>Mon-Fri</b> 9:00am - 5:30pm	Youth	7
Sanctuary of Hope	(424) 374-8038	13245 Hawthorne Blvd., Hawthorne, CA 90250	<b>Mon-Fri</b> 9:00am - 5:00pm	Youth	8

# FY 25-26 Safe Parking Program



## WHAT IS SAFE PARKING?

The Safe Parking program gives people living in their cars, vans, and RVs/campers a safe and legal place to park and sleep at night.

## WHAT SERVICES DO SAFE PARKING PROGRAMS PROVIDE?

- A place to safely park and rest inside your vehicle
- Access and use of a restroom and handwashing station
- On-site security
- Financial Assistance
- Case management and referrals to community resources

*\*Site amenities vary according to each site. Please see site information on next page*

## AM I ELIGIBLE FOR SAFE PARKING?

To access the Safe Parking program, you must be:

- Experiencing homelessness in your vehicle
- Have a valid driver's license, vehicle registration, & proof of insurance

*\*Admission is based on eligibility screening; participants must have operable vehicles*

## HOW DO I ACCESS A SAFE PARKING PROGRAM?

- 1 FIND A PROGRAM**  
Pick a Safe Parking site that is close to you
- 2 CALL FOR AVAILABILITY AND ARRANGE INTAKE**  
You can also complete a Safe Parking referral form by following the link: <https://forms.office.com/r/nz7DDZMZu0>
- 3 PICK UP YOUR PARKING PASS**  
During intake you will be given a parking pass to allow you access to the site
- 4 GO TO THE SAFE PARKING LOCATION**  
Safe Parking program operating hours vary by location. Participants must leave the lot by a certain time each morning. Refer to hours of operation at each location

# SAFE PARKING SITES

Service Provider	SPA	Location/Zip	Phone Number	Email	Operating Hours	RVs Allowed?	Population Served
Volunteers of America	1	Lancaster/93536	(661) 723-4873	<a href="mailto:jelisionjackson@voala.org">jelisionjackson@voala.org</a>	24 Hours	No	Adults, Youth
North Valley Caring Services	2	Northridge/91324	818-300-3131	<a href="mailto:kfaithful@nvcsinc.org">kfaithful@nvcsinc.org</a>	M to F: 7PM - 7 AM Sat & Sun 8:30 PM-7 AM	No	Adults, Youth
Safe Parking LA	2	Reseda/91335	(323) 210-3375	<a href="mailto:warmline@safeparkingla.org">warmline@safeparkingla.org</a>	8:30 p.m. - 7:30 a.m.	No	Adults, Families, Youth
Volunteers of America	2	Van Nuys/91405	(213) 247-6261	<a href="mailto:ksilva@voala.org">ksilva@voala.org</a>	8 p.m. - 6 a.m.	No	Adults, Youth
End Homelessness CA	4	Glassell Park/90065	(424) 343-7752	<a href="mailto:safeparking@theshowerofhope.org">safeparking@theshowerofhope.org</a>	7 p.m. - 7 a.m.	Yes	Adults, Families, Youth
End Homelessness CA	4	Westlake/90017	(424) 343-7752	<a href="mailto:safeparking@theshowerofhope.org">safeparking@theshowerofhope.org</a>	7 p.m. - 7 a.m.	Yes	Adults, Families, Youth
Safe Parking LA	4	Downtown LA/90015	(323) 210-3375	<a href="mailto:warmline@safeparkingla.org">warmline@safeparkingla.org</a>	7:30 p.m. - 7:30 a.m.	No	Adults, Families, Youth
Safe Parking LA	5	Sawtelle/90025	(323) 210-3375	<a href="mailto:warmline@safeparkingla.org">warmline@safeparkingla.org</a>	7:30 p.m. - 7:30 a.m.	No	Adults, Families, Youth
Safe Parking LA	5	West LA/90073	(323) 210-3375	<a href="mailto:warmline@safeparkingla.org">warmline@safeparkingla.org</a>	6:30 p.m. - 7:30 a.m.	Yes	Veteran Households (Adults, Families, Youth)
Safe Parking LA	5	Culver City/90034	(323) 210-3375	<a href="mailto:warmline@safeparkingla.org">warmline@safeparkingla.org</a>	7:30 p.m. - 7:30 a.m.	No	Adults, Families, Youth
Special Services for Groups (HOPICS)	6	South LA/90004	323-432-4399 ext 589	<a href="mailto:safeparking@hopics.org">safeparking@hopics.org</a>	7 p.m. - 7 a.m.	Yes	Adults, Families, Youth
Special Services for Groups (HOPICS)	6	South LA/90003	323-432-4399 ext 589	<a href="mailto:safeparking@hopics.org">safeparking@hopics.org</a>	7 p.m. - 7 a.m.	No	Adults, Youth
Special Services for Groups (HOPICS)	6	Compton/90220	323-432-4399 ext 589	<a href="mailto:safeparking@hopics.org">safeparking@hopics.org</a>	7 p.m. - 7 a.m.	Yes	Adults, Families, Youth
Volunteers of America	7	East LA/90022	(213) 247-6261	<a href="mailto:ddiaz@voala.org">ddiaz@voala.org</a>	24 Hours	No	Adults, Families, Youth
Volunteers of America	8	San Pedro/90731	(213) 247-6261	<a href="mailto:ksilva@voala.org">ksilva@voala.org</a>	8 p.m. - 6 a.m.	No	Adults, Families, Youth
WLCAC	8	Torrance/90502	323-563-4721	<a href="mailto:cwoods@wlcac.org">cwoods@wlcac.org</a>	7 p.m. - 7 a.m.	Yes	Adults, Families, Youth



# COMMUNITY DEVELOPMENT DEPARTMENT PLANNING

## Affordable Housing Placement Program



### WHAT IS "AFFORDABLE HOUSING"?

Although this term can have various meanings, when the City refers to affordable housing, it is meant to describe housing units that have been constructed as part of a private development project and are required to be set aside and rented at a rate that is affordable to a certain income level.

The role of the City's affordable housing program is to work with the developer to ensure that the affordable housing unit is rented out to a household that is qualified based on their level of income. The City also works with the developer to ensure that the application process for the affordable housing units complies with the City's affordable housing guidelines.

The income levels are determined using the Area Median Income (AMI) at the county-level, which are based on household size, and are set by the state Department of Housing and Community Development (HCD) each year. The current AMI for Los Angeles County is \$98,200, which is then used to set the limit for income levels for various household sizes.

The income levels are generally calculated as follows:	Acutely low income: 0 to 15% of AMI	Very low income: 30% to 50% of AMI	Extremely low income: 15 to 30% of AMI	Low income: 50% to 80% of AMI	Moderate income: 80% to 120% of AMI
--	--	---------------------------------------	---	----------------------------------	--

**TABLE 1 | LOS ANGELES COUNTY INCOME LEVELS (2024)**

Los Angeles County Area Median Income: \$98,200	INCOME LEVEL	Number of Persons in Household							
		1	2	3	4	5	6	7	8
	Acutely Low	\$10,350	\$11,800	\$13,300	\$14,750	\$15,950	\$17,100	\$18,300	\$19,450
Extremely Low	\$29,150	\$33,300	\$37,450	\$41,600	\$44,950	\$48,300	\$51,600	\$54,950	
Very Low Income	\$48,550	\$55,450	\$62,400	\$69,350	\$74,900	\$80,450	\$86,000	\$91,550	
Low Income	\$77,700	\$88,800	\$99,900	\$110,950	\$119,850	\$128,750	\$137,600	\$146,500	
Median Income	\$68,750	\$78,550	\$88,400	\$98,200	\$106,050	\$113,900	\$121,750	\$129,600	
Moderate Income	\$82,500	\$94,300	\$106,050	\$117,850	\$127,300	\$136,700	\$146,150	\$155,550	

### WHAT ARE AFFORDABLE HOUSING COSTS?

The affordable housing monthly rental prices listed in Table 2 are gross amounts before any deductions for utility allowances. If the tenant is required to pay for utilities, the maximum rent must be reduced to account for the cost of those utilities, by the amount of the utility allowance (as determined by the City of Beverly Hills and as updated from time to time) not including the cost of telephone, cable TV, or internet service.

**TABLE 2 | AFFORDABLE UNIT RENTAL RATES**

No. of Bedrooms	Extremely Low (30%)	Very Low (50%)	Lower (60%)	Moderate (110%)
0 Bedroom (Efficiency)	\$515	\$859	\$1,031	\$1,891
1 Bedroom	\$589	\$981	\$1,178	\$2,160
2 Bedrooms	\$663	\$1,105	\$1,326	\$2,431
3 Bedrooms	\$736	\$1,227	\$1,472	\$2,700
4 Bedrooms	\$795	\$1,325	\$1,591	\$2,916

The rent of each income level has been adjusted for assumed household size based on presumed occupancy level of one person in a studio apartment, two persons in a one-bedroom unit, three persons in a two-bedroom unit, and one additional person for each additional bedroom thereafter.

**ALLOWABLE HOUSEHOLD SIZE**

0 Bedroom	1 Bedroom	2 Bedroom	3 Bedroom	4 Bedroom
1-2 Persons	1-3 Persons	2-5 Persons	3-7 Persons	4-9 Persons

## HOW DO I APPLY FOR AFFORDABLE HOUSING UNITS?

The City of Beverly Hills has partnered with HouseKeys to manage affordable housing applications. If you're interested in affordable rental opportunities, follow the new process to stay informed and eligible. The first step is to log on to [www.housekeys20.com](http://www.housekeys20.com) to create an account - please see [www.beverlyhills.org/affordablehousing](http://www.beverlyhills.org/affordablehousing) for more information on how to create a HouseKeys account. Once a new affordable unit becomes available, those with HouseKeys accounts will receive an email with details about the available unit and how to apply for the opportunity. Once a drawing is held and applicants are ranked according to the City's Occupancy Priority Tiers, HouseKeys will work with the highest ranked eligible applicants to lease the unit. Please note that each housing opportunity will require a separate application process. Any questions on this process can be directed to [customerservice@housekeys.org](mailto:customerservice@housekeys.org) or by calling 1-877-460-5397 (KEYS).

The Affordable Housing Occupancy Priority Ranking was determined by the City Council, and is summarized below. More information on the ranking categories can be found here: [www.beverlyhills.org/affordablehousing](http://www.beverlyhills.org/affordablehousing).

OCCUPANCY PRIORITY LIST	
<b>TIER 1</b>	Existing occupants of protected units who are lower income households and are displaced from a project site on which the new project will be developed.
<b>TIER 2</b>	Senior households displaced from a property in the City of Beverly Hills in the last 10 years.
<b>TIER 3</b>	Households with BHUSD students (10th grade or lower) displaced from a property in the City of Beverly Hills in the last 10 years.
<b>TIER 4</b>	Other households displaced from a property in the City of Beverly Hills in the last 10 years.
<b>TIER 5</b>	Senior households (62+).
<b>TIER 6</b>	Individuals employed full time by public or private entity located & operating in the City of Beverly Hills and whose primary work location is located within the City.

## WHAT IS CONSIDERED "DISPLACED"?

For the purposes of this program, displacement shall be defined as when persons have permanently vacated their primary housing unit in the City, or are at risk of having to permanently vacate their primary housing unit within the City of Beverly Hills as a result of the following:

- Demolition of the housing unit due to new development project on the subject property.
- Voluntary vacation of the housing unit related to a new development project on the subject property (for example, accepting cash for keys offer).
- Withdrawal of the housing unit from the rental housing market under the Ellis Act.
- Involuntary vacation of a housing unit due to the natural disaster such as an earthquake, fire or flood.
- Involuntary vacation of a housing unit as a result of a dangerous condition of the property making the unit unsafe to occupy on a permanent basis as deemed by the City, including but not limited to, when occupancy is no longer permitted pursuant to California Health and Safety Code regulations relating to a unit or building deemed substandard or uninhabitable.

## HOW DO I SIGN UP TO BE NOTIFIED ABOUT AFFORDABLE HOUSING OPPORTUNITIES?



If you would like to receive email notification when an application period for an affordable housing unit(s) begins, please visit [www.beverlyhills.org/affordablehousing](http://www.beverlyhills.org/affordablehousing) to add your name to the Interested Parties sign up list or visit [www.housekeys20.com](http://www.housekeys20.com). Once an application period for an affordable housing unit(s) is opened, an email notification will be sent to this list as well as in advance of the start date for the application period.



## DOES THE CITY ISSUE SECTION 8 VOUCHERS?

The City of Beverly Hills is not a housing authority, and does not issue housing vouchers, nor does the City handle section 8 unit placement. A housing voucher may be obtained through the local housing authority. To find your local housing authority visit [www.hud.gov/california](http://www.hud.gov/california) or [www.lacda.org](http://www.lacda.org) search for public housing authority contact information.



# City of Bell Gardens



# PLHA Rental Assistance Program



- ◆ **The City of Bell Gardens is now providing up to 12 months in rent subsidy to qualified renters at risk of homelessness.**
- ◆ **This assistance is made possible by the State’s PLHA (Permanent Local Housing Allocation) Program and the Los Angeles County Development Authority (LACDA).**
- ◆ **To be eligible, households must meet the following criteria:**
  1. **Have a minimum area median income (AMI) of 30%.**
  2. **Be able to contribute 60% or more of their total monthly income towards rent.**
- ◆ **Financial assistance will be in the form of a monthly rent subsidy paid directly to the landlord or property owner.**
- ◆ **Case management includes, but is not limited to, application review, housing stability assistance, homeless prevention, guidance with tracking expenses, managing bills, and prioritizing financial obligations.**
- ◆ **Assistance and funds will be available on a first-come, first-serve basis and until funds are depleted.**

To submit an application, please contact:

Community Family Service Center  
6662 Loveland Street  
Bell Gardens, CA 90201  
(562) 928-2000

Community Development Housing Division  
7100 Garfield Avenue  
Bell Gardens, CA 90201  
(562) 806-7700 Ext. 7257

2023 Income Limits

Number of Persons	Extremely Low-Income	Very Low-Income	Moderate-Income	Moderate-Income (120%)	Moderate-Income (150%)
1	\$26,500	\$52,980	\$70,650	\$105,900	\$109,000
2	\$30,300	\$60,540	\$80,750	\$121,050	\$124,600
3	\$34,100	\$68,100	\$90,850	\$136,200	\$140,150
4	\$37,850	\$75,660	\$100,900	\$151,300	\$155,700
5	\$40,900	\$81,720	\$109,000	\$163,450	\$168,200
6	\$43,950	\$87,780	\$117,050	\$175,550	\$180,650
7	\$46,950	\$93,840	\$125,150	\$187,650	\$193,100
8	\$50,000	\$99,900	\$133,200	\$199,750	\$206,110



You may also want to apply for the Los Angeles County Rental Assistance Program online as another option at:

[www.lacountyrentrelief.com](http://www.lacountyrentrelief.com)

Or call (877) 849-0770  
Monday – Sunday\*  
7:00 a.m.-7:00 p.m. PST  
\*Except for state and federal holidays

City of Bell Gardens  
7100 Garfield Ave.  
Bell Gardens, CA 90201

Postal Customer  
Bell Gardens  
CA 90201

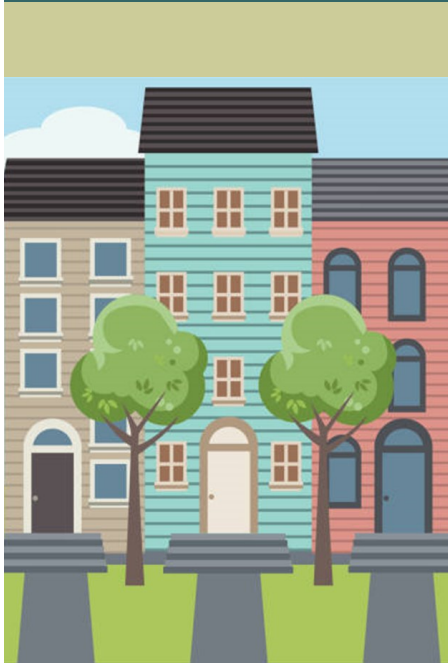
Presorted Standard  
U.S. Postage PAID  
Permit #213  
Bell Gardens  
CA90201



# Ciudad de Bell Gardens



# Programa de Asistencia para el Alquiler de PLHA



- ♦ La Ciudad de Bell Gardens ahora está proporcionando hasta 12 meses en subsidios de alquiler a inquilinos calificados en riesgo de quedarse sin hogar.
- ♦ Esta asistencia es posible gracias al Programa del Estado PLHA (Programa de Asignación de Vivienda Local Permanente) y a la Autoridad de Desarrollo del Condado de Los Angeles (LACDA).
- ♦ Para ser elegibles, los hogares deben cumplir con los siguientes criterios:
  1. Tener un ingreso medio mínimo del área (AMI) del 30%.
  2. Ser capaz de contribuir con el 60% o más de sus ingresos mensuales totales para el alquiler.
- ♦ La asistencia financiera será en forma de un subsidio mensual de alquiler pagado directamente al arrendador o dueño de la propiedad.
- ♦ La administración de casos incluye, entre otros, la revisión de solicitudes, asistencia para la estabilidad de la vivienda, prevención de personas sin hogar, orientación con el seguimiento de gastos, administración de facturas y priorización de obligaciones financieras.
- ♦ La asistencia y los fondos estarán disponibles por orden de llegada y hasta que se agoten los fondos.

Para presentar una solicitud, por favor comuníquese al:

Community Family Service Center  
6662 Loveland Street  
Bell Gardens, CA 90201  
(562) 928-2000

Community Development Housing Division  
7100 Garfield Avenue  
Bell Gardens, CA 90201  
(562) 806-7700 Ext. 7257

Límites de Ingresos para 2023

Numero de Personas	Ingresos Extremadamente Bajos	Ingresos Muy Bajos	Ingresos Moderados	Ingresos Moderados (120%)	Ingresos Moderados (150%)
1	\$26,500	\$52,980	\$70,650	\$105,900	\$109,000
2	\$30,300	\$60,540	\$80,750	\$121,050	\$124,600
3	\$34,100	\$68,100	\$90,850	\$136,200	\$140,150
4	\$37,850	\$75,660	\$100,900	\$151,300	\$155,700
5	\$40,900	\$81,720	\$109,000	\$163,450	\$168,200
6	\$43,950	\$87,780	\$117,050	\$175,550	\$180,650
7	\$46,950	\$93,840	\$125,150	\$187,650	\$193,100
8	\$50,000	\$99,900	\$133,200	\$199,750	\$206,110



También puede aplicar para el Programa de Asistencia para el Alquiler del Condado de Los Angeles en línea como otra opción en:

[www.lacountyrentrelief.com](http://www.lacountyrentrelief.com)

O llame al (877) 849-0770

Lunes – Domingo

7:00 a.m.- 7:00 p.m. PST

\*excepto los días festivos estatales y federales

# HOMESHARE

*Matching Home Providers with Home Seekers*



**COUNTY of VENTURA**  
Human Services Agency  
Area Agency on Aging

HomeSharing is an alternative way of meeting housing needs that benefits renters and homeowners alike. Simply put, HomeSharing is an arrangement where two or more unrelated people share a dwelling, each having their own private space and sharing certain common areas. HomeSharers may arrange a regular rental payment, or exchange services to offset a portion or all of the rent. *No two HomeSharing situations are alike; each is tailored to the needs and preferences of the individual people involved.*



Ventura County HomeShare facilitates a more secure connection to area Home Seekers and Providers looking for an alternative option to many of today's housing and independent living challenges. Ventura County HomeShare *will not* dictate the terms of the HomeSharing arrangement but rather assists with screening candidates, links potentially successful matches, and offers guidance on the interview process. Ventura County HomeShare *will not* solve emergency housing needs but rather assist area residents with creating successful solutions to the high cost of care and housing in Ventura County.

## Who HomeShares?

Home Providers may be living in a house too large due to life changes or they may be finding it difficult to cope with maintaining a household alone. Home Seekers may be seniors, college students, newly single persons, professionals recently moved to the area or travelling, or anyone in need of lower-cost housing with an understanding of the benefits of sharing.

- HomeShare does not provide home health care. If an applicant needs a great deal of personal care or cannot be left unattended, this program is not appropriate. HomeSharers can provide companion care and household help, but it should be expected that seekers will have activities of their own, independent of the home provider.
- The process of matching is a careful and somewhat time-consuming one and is not a “quick fix.” It will take time for us to find suitable matches and for applicants to make careful decisions. People in need of short-term housing may apply, but many providers prefer a longer-term commitment and referral opportunities may be limited.
- Persons with convictions for felony or misdemeanor crimes involving bodily injury, assault, elder abuse, sexual offense, possession or distribution of an illegal substance, or theft or damage of personal property, are not eligible for the program. We can, however, assist people in finding community resources.

## The HomeShare Process

- 1) Complete and submit application materials.**
- 2) Profile preparation** including background checks for all participants and home inspections by staff, as needed.
- 3) Match referral** including phone interviews with staff, and potential HomeSharers.
- 4) Face-to-face meeting** of HomeSharers, with staff support as needed.
- 5) HomeShare agreement!** Once a match is made, Ventura County HomeShare suggests participants document their agreement. We can provide templates that participants can use to create their own personalized agreement.

The staff of Ventura County HomeShare acts only as a facilitator providing the opportunity for parties involved to come together and work out their own housing arrangements. It is the responsibility of the participants to determine whether referred individuals are found to be compatible. All final decisions regarding HomeSharing rest with the Seekers and Providers of housing.

# HOMESHARE

*Emparejar Proveedores de Vivienda con Solicitantes de Vivienda*



**COUNTY of VENTURA**  
Human Services Agency  
Area Agency on Aging

El programa de Compartiendo Vivienda (HomeSharing) es una forma alternativa de satisfacer las necesidades de vivienda que beneficia a inquilinos y propietarios por igual. Simplemente el programa de Compartiendo Vivienda es un arreglo donde dos personas o más no relacionadas comparten una vivienda, cada uno teniendo su propio espacio y comparten algunas áreas comunes. Los que comparten la vivienda pueden arreglar un pago de renta regular o intercambiar servicios para compensar parte de la renta o la renta total. *Ningún caso de Compartiendo Vivienda (HomeSharing) es igual; cada uno es de acuerdo con las necesidades y preferencias de las personas involucradas.*

El Programa del Condado De Ventura HomeShare (Compartiendo Vivienda) facilita una conexión más segura con los Solicitantes y Proveedores de Vivienda del área que buscan una alternativa a muchos de los desafíos actuales de vivienda y vida independiente. El Programa del Condado De Ventura HomeShare (Vivienda Compartida) no dictará los términos del acuerdo de HomeSharing, sino que ayuda a evaluar los candidatos, conecta coincidencias potencialmente exitosas, y ofrece orientación sobre el proceso de entrevistas. El Programa del Condado De Ventura HomeShare *no resolverá* las necesidades de vivienda de emergencia, sino que ayuda a los residentes del área a crear soluciones exitosas para el alto costo de la atención y la vivienda en el condado de Ventura.



## ¿Quién Comparte Casa?

Los Proveedores de Hogar pueden estar viviendo en una casa demasiado grande debido a cambios en la vida o pueden tener dificultades para hacer frente al mantenimiento. Los solicitantes de vivienda pueden ser adultos mayores, estudiantes universitarios, personas recién solteras, profesionales que se han mudado recientemente a la zona o que están de viaje, o cualquier persona que necesite una vivienda de menor costo con una comprensión de los beneficios de compartir.

- El Programa de HomeShare (Vivienda Compartida) no proporciona atención médica en el hogar. Si un solicitante necesita una gran cantidad de cuidados personales o no se le puede dejar desatendido, este programa no es apropiado. Los que comparten vivienda (Home Sharers) pueden proporcionar cuidado de acompañantes y ayuda doméstica, pero se debe esperar que los solicitantes tengan sus actividades propias independientemente del proveedor de la vivienda.
- El proceso de emparejamiento es cuidadoso y requiere algo de tiempo y no es una “solución rápida”. Nos llevará tiempo encontrar coincidencias adecuadas y que los solicitantes tomen decisiones cuidadosas. Las personas que necesitan vivienda a corto plazo pueden solicitarlo, pero muchos proveedores prefieren un compromiso a largo plazo y las oportunidades de referencia pueden ser limitadas.
- Las personas con condenas por delitos graves o delitos menores que involucren lesiones corporales, agresión, abuso de adultos mayores, delitos sexuales, posesión o distribución de una sustancia ilegal, o robo o daño a la propiedad personal, no son elegibles para el programa. Sin embargo, podemos ayudar a las personas a encontrar recursos comunitarios.

## El Proceso de Compartir Vivienda (HomeShare)

- 1) **Complete y envíe los materiales de la solicitud.**
- 2) **Preparación del perfil**, incluidas las verificaciones de antecedentes de todos los participantes y las inspecciones de vivienda por parte del personal, según sea necesario.
- 3) **Referencias de coincidencias**, incluidas entrevistas telefónicas con el personal y posibles Compartidores de Vivienda (HomeSharers).
- 4) **Reunión cara a cara** de Compartidores de Vivienda (HomeSharers), con el apoyo del personal según sea necesario.
- 5) **¡Acuerdo de HomeShare!** Una vez que se hace una coincidencia, el programa de Ventura County HomeShare sugiere que los participantes documenten su acuerdo. Podemos proporcionar formas para que los participantes puedan usar para crear su propio acuerdo personalizado.

El personal del programa Ventura County HomeShare (Vivienda Compartida) actúa solo como un facilitador que brinda la oportunidad para que las partes involucradas se reúnan y resuelvan sus propios arreglos de vivienda. Es responsabilidad de los participantes determinar si las personas referidas son compatibles. Todas las decisiones finales con respecto a el programa de HomeSharing (Compartiendo Vivienda) recaen en los Solicitantes y Proveedores de vivienda.

## MEDICAL

- Health Care for the Homeless/Transition Clinic  
3147 Loma Vista Rd, Ventura ..... 805-652-6694
- Whole Person Care ..... 805-339-1122
- Mo orpark**
- Moorpark Family Care Center – 612 Spring Rd ..... 805-523-5400
- Ventura County Public Health ..... 805-981-5221 or call Toll Free ..... 888-285-5021 Medical Therapy for Children – 2250 N. Tracy Ave Public Health Clinic – 1133 E. Los Angeles Ave, #B 1227 E. Los Angeles Ave ..... 805-582-4000
- Sierra Vista Family Medical Clinic Free Clinic of Simi Valley – 2003 Royal Ave (Tuesdays, 9 a.m.–1 p.m.) ..... 805-522-3733
- Simi Valley Hospital – 2975 Sycamore Dr. .... 805-955-6000
- Thousand Oaks**
- Conejo Valley Family Medical Group 125 W. Thousand Oaks Blvd, #300 ..... 805-418-9100
- Los Robles Hospital & Medical Center – 215 W. Janss Rd ..... 805-497-2727
- Westminster Free Clinic ..... 805-241-8366 at the United Methodist Church – 1000 E. Janss Rd (Wednesdays, 4–10:30 p.m.; first-come, first-served)

## MENTAL HEALTH

- Countywide**
- Adult Crisis Team – 24-hour Hotline ..... 866-998-2248
- Children's Intensive Response Team (for children & youth to 21 years old) ..... 866-431-2478
- Behavioral Health Administration 1911 Williams Dr, #200, Oxnard ..... 805-981-6830
- NAMI – National Alliance on Mental Illness (Support/Advocacy) ..... 805-641-2426
- STAR (Access to Mental Health Services)/Crisis 1911 Williams Dr, #200, Oxnard ..... 805-981-4233

## Simi Valley

- Ventura County Behavioral Health Clinic – 1227 E. Los Angeles Ave (also serves Moorpark) ..... 805-582-4075

## Thousand Oaks

- Conejo Behavioral Health Clinic 125 W. TO Blvd, #500, TO ..... 805-777-3500

## SENIOR CITIZENS SERVICES

- 24-hour Helpline ..... dial 2-1-1
- Adult Protective Services (abuse/neglect) ..... 805-654-3200

- Area Agency on Aging 646 County Square Dr, #100, Ventura ..... 805-477-7300
- Mental Health, Older Adult Services 5740 Rakston St, Ventura ..... 805-289-3203
- Outreach Services (visit nursing homes) ..... 805-656-1886
- Senior Nutrition (meal site information) ..... 805-477-7300

## SHELTERS

- **Domestic Violence Shelters**
- Coalition for Family Harmony – 24-hour Hotline ..... 805-656-1111
- Toll Free 24-hour Hotline ..... 800-300-2181 TTY ..... 805-656-4439

- Interface Children & Family Services – 4001 Mission Oaks Blvd, Camarillo ..... 800-485-6114

## round Shelters

- There are no year-round shelters in the Simi-Conejo area
- Gabriel's House (Women/Children), Oxnard ..... 805-487-3445
- Lighthouse Womens & Childrens Mission – Emergency Shelter Oxnard ..... 805-385-7200
- Our Place Shelter (mentally ill) – 538 E. Thompson Blvd, Ventura ..... 805-652-2151
- Salvation Army – Hope Center (single adults) ..... 805-648-4977
- Ventura County Rescue Mission (men only) 234 E. 6th St, Oxnard ..... 805-487-1234

## Winter Shelters

- Simi Valley – P.A.D.S. (November–March) call for information ..... 805-579-9166
- Thousand Oaks – Conejo Valley Winter Shelter (December–March) – call for information ..... 805-464-3533

## SHOWERS/TOILETS

- VC Rescue Mission – 234 E. 6th St, Oxnard ..... 805-487-1234
- The Samaritan Center – 280 Royal Ave, Simi Valley (Monday–Thursday, 9 a.m.–noon) ..... 805-579-9166
- Lutheran Social Services of Southern CA – 80 E. Hillcrest Dr, #101, T.O. (Monday, Tuesday, Wednesday, Friday, 9 a.m.–4:30 p.m.) ..... 805-497-6207

## TRANSITIONAL HOUSING

- VC Center – 837 E. Thompson Blvd, Ventura ..... 805-628-9699
- Gabriel's House (The Kingdom's Center), Oxnard ..... 805-487-3445
- RAIN Transitional Living Center (families & singles) Call for application ..... 805-383-7505
- Sarah's House Maternity Home ..... 805-581-1910
- Tender Life Maternity Home – 871 E. Thompson Blvd, Ventura ..... 805-653-7474
- Veterans Transitional Housing facility in Ventura 557 E. Thompson Blvd, Ventura ..... 805-652-0000 x108

## VETERANS SERVICES

- Countywide**
- County of Ventura Veteran Services 2901 N. Ventura Road, 3rd Floor, Oxnard ..... 805-477-5155
- Department of Veterans Affairs – Outpatient Clinic Veterans Center – Counseling Services (Monday–Friday, 8 a.m.–4:30 p.m.) 4440 Calle Real, Santa Barbara ..... 805-683-1491
- Disabled Veterans Outreach (EDD) ..... 805-288-8400
- Gold Coast Veterans Foundation 4001 Mission Oaks Blvd, #D, Camarillo ..... 805-482-6550
- VA Oxnard Community-Based Outpatient Clinic 1690 Universe Circle, Oxnard ..... 805-204-9135
- Ventura Vet Center (Counseling) 790 E. Santa Clara St, #100 ..... 805-585-1860
- Veterans Home of California – Ventura 10900 Telephone Rd, Ventura ..... 805-659-7502
- Veteran Transitional Housing – Ventura ..... 805-652-0000

## Mo orpark

- Community Services Center (Ruben Castro Human Services Center) 612 Spring Rd, BldgB, #301 ..... 805-656-1111
- Walk-in hours – Fridays, 9 a.m.–1 p.m.

- Simi Valley**
- America's Job Center – 2900 N. Madera Rd, #100 Walk-in hours – Wednesdays, 8 a.m.–4 p.m.
- Simi Valley Senior Center – 3900 Avenida Simi, 1st Wednesday 9 a.m.–noon – by appointment only ..... 805-583-6363

## Thousand Oaks

- Supervisor Linda Parks' Office – 625 W. Hillcrest Dr Thursdays, 9 a.m.–12 noon – by appointment only
- Thousand Oaks Senior Center – 1985 E. Janss Rd Walk-in hours – 2nd Tuesday, 1:30–4 p.m.

## YOUTH SERVICES

- Interface Youth Rescue Line ..... 805-469-5882
- Independent Living Program (former Foster Youth) ..... 805-289-1990 or 805-385-9174
- Transition Age Youth (TAY Tunnel) – 141 W. 5th St, #D, Oxnard ..... 805-240-2538
- Youth & Teens National Runaway Safeline – 24-hour Hotline ..... 800-RUN-AWAY
- Transitions (VC Behavioral Health) ..... 805-981-9270

Most of the agencies listed can offer only limited, temporary assistance, depending on available funds. Refer to the Western Ventura County Resources brochure for resources available in other regions of the County.

Please email updated listings to [hlsa.communications@ventura.org](mailto:hlsa.communications@ventura.org)



## COUNTY of VENTURA

Human Services Agency

This brochure was prepared by:  
County of Ventura Human Services Agency  
Homeless Services Program

805-385-1800

[www.vchsa.org](http://www.vchsa.org)



# COUNTY of VENTURA

Human Services Agency

## Resources

for People Experiencing  
Homelessness

Eastern  
Ventura  
County

Moorpark • Simi Valley  
Thousand Oaks

This information current as of  
**September 2022**

## ALCOHOL & DRUG SERVICES

- 24-hour Helpline ..... dial 2-1-1
- County Alcohol/Drug Line ..... 805-981-9200
- Alcoholics Anonymous - Countywide Information ..... 805-389-1444
- Español (Spanish) ..... 805-988-0329 • Al-Anon of Ventura County ..... 805-253-7188
- Simi Valley Center - 3150 Los Angeles Ave ..... 805-577-1724
- Khepera House (men) treatment ..... 805-648-2652
- 150 W. Harrison St., Ventura ..... 805-385-7200
- Lighthouse for Women & Children ..... 805-482-1265
- 150 N. Hayes Ave., Oxnard ..... 805-382-6296
- Palmer Drug Abuse Program ..... 805-382-6296
- Prototypes Women's Center ..... 805-382-6296
- 2150 N. Victoria Ave., Oxnard ..... 805-436-4693
- Ventura County Rescue Mission (men) ..... 805-648-3295
- 234 E. 6th St., Oxnard ..... 805-581-2599
- Ventura/Tri-Counties Teen Challenge ..... 805-648-3295
- 6790 N. Ventura Ave., Ventura ..... 805-581-2599
- Victory Outreach Church - 3701 Alamo St., Simi Valley ..... 805-581-2599

## BENEFITS

- Human Services Agency (CalWORKS, General Relief, CalFresh/Food Stamps), Medi-Cal ..... 888-472-4463
- Simi Valley - 2900 N. Madera Rd ..... 805-584-4842
- Moorpark - 612 Spring Rd, Bldg B, #301 ..... 805-523-5444
- Thousand Oaks - 80 E. Hillcrest Dr, #200 ..... 805-449-7320
- Social Security Administration ..... 800-772-1213 or TTY 800-325-0778
- T.O. Office - 322 Thousand Oaks Blvd ..... 800-772-1213
- State of California Employment Development Department (EDD) - Unemployment ..... 800-772-1213
- The U.S. Self-Service phone line is available 24/7 at: ..... 866-333-4606
- English/Spanish ..... 800-300-5616
- Cantonese ..... 800-547-3506
- Mandarin ..... 866-303-0706
- Vietnamese ..... 800-547-2058
- TTY (non-voice) ..... 800-815-9387

## BUS

- Dial-A-Ride (Thousand Oaks) ..... 805-375-5467
- Connect City-to-City East County Transit Alliance
- Gold Coast Transit ..... 805-487-4222
- Greyhound Bus ..... 800-231-2272
- Moorpark City Transit ..... 805-375-5473
- Simi Valley Transit ..... 805-583-6464
- Ventura County Transportation Commission - VCTC InterCity Transit ..... 800-438-1112

## CAMPGROUNDS/CAMPING

- Ventura County Parks Dept Online Reservations ..... 805-654-3351
- California State Parks - online camping reservations ..... 800-444-PARK (7275) - TDD: 800-274-7275
- Moorpark - Happy Camp Canyon Park ..... 805-654-8444
- 14105 Broadway Ave ..... 805-654-3951
- Simi Valley - Oak Park - 901 Quimby Dr ..... 805-654-3951
- Tapo Canyon Regional Park - 4651 Tapo Canyon Rd ..... 805-654-3700

## CHILDREN'S SERVICES

- Children's Crisis Team - 24-hour Hotline ..... 866-431-2478
- Child Development Resources (CDR) (childcare, Head Start) ..... 805-485-7878
- Children & Family Services (abuse, adoption, foster care) ..... 805-955-2290
- Children's Medical Services ..... 805-981-5291
- CCS - California Children's Services ..... 805-981-5291
- 2240 E. Gonzales Rd, #260, Oxnard ..... 805-981-5281
- Homeless Education Project - 5189 Verdugo Way, Camarillo ..... 805-437-1559
- School on Wheels Inc. - 83 S. Palm St., Ventura ..... 805-641-1678

## CITIZENSHIP/IMMIGRATION

- Concordio Family Services - 301 S. C St., Oxnard ..... 805-486-9777
- U.S. Citizenship & Immigration Services ..... Toll Free 866-559-9191
- 2000 Outlet Center Dr, #200, Oxnard ..... 888-418-3053

## CLOTHES

- Catholic Charities - Moorpark Panty Plus ..... 805-529-0720
- 612 Spring Rd, #101 ..... 805-529-0720
- Lutheran Social Services ..... 805-529-0720
- 80 Hillcrest Dr #101, Thousand Oaks ..... 805-497-6207
- Samaritan Center - 280 Royal Ave, Simi Valley ..... 805-579-9166
- (Monday-Thursdays, 7-11 a.m.)

## DENTAL

- Child Health & Disability Prevention (CHDP) ..... 805-981-5291
- 2240 E. Gonzales Rd, #270, Oxnard ..... 805-981-5291
- Clinics Del Camino Real, Inc (by appointment only) ..... 805-498-7291
- Newbury Park - 1000 Newbury Rd, #150 ..... 805-522-5722
- Simi Valley - 1424 Madera Rd ..... 805-522-5722
- Free Clinic of Simi Valley (call for appointment) ..... 805-522-3733
- Salvation Army Dental Services - 622 W. Wooley Rd, Oxnard ..... 805-483-9235
- (call for appointment)

## DISABLED PERSONS

- Department of Rehabilitation ..... 805-371-6279
- 101 Hodocamp Rd, #212, Thousand Oaks ..... 805-371-6279
- Rehabilitation Living Resource Center - 702 County Square Dr, #103 ..... 805-526-1036
- Voice/Fax (TTY) 805-650-5993 video phone ..... 805-526-1036
- 886 Counties Regional Center - 2635 Park Center Dr, Simi Valley ..... 805-522-3733

## DOMESTIC VIOLENCE

- Child/Adult Abuse & Neglect 24-hour Hotline ..... 805-654-3351
- Coalition for Family Harmony ..... 805-656-1111
- 24-hour Bilingual Hotline ..... 800-300-2181
- Interface Children & Family Services ..... 800-636-6738
- Interface Youth Crisis Outreach Program ..... 805-469-5882
- 4001 Mission Oaks Blvd, #1, Camarillo

## 805-385-1800

County of Ventura Human Services Agency • Homeless Services Program

## DROP-IN SERVICES

- ARC Ventura County - 5143 Cochran St., Simi Valley ..... 805-520-0999
- One-Stop Center - Church of the Nazarene - 2280 Antonio Ave, Camarillo ..... 805-652-6694
- (4th Thursday, 8:30-11 a.m.)
- Samaritan Center - 280 Royal Ave, Simi Valley - showers, mail, clothing messages, job coaching (Monday-Thursdays, 9 a.m.-noon) ..... 805-579-9166

## HEALTH CARE

- Sierra Vista Urgent Care - 1227W. Thousand Oaks Blvd, #200 ..... 805-520-3296
- Westminister Community Care Center ..... 805-241-8566
- 1000 E. Jarvis Rd., Thousand Oaks
- Employment Services - East County ..... 805-955-2282
- 2900 N. Madera Rd., Simi Valley ..... 805-529-0720
- Catholic Charities Careers - 612 Spring Rd, #101, Moorpark ..... 805-529-0720
- California Conservation Corps - 3200 Wright Rd, Camarillo ..... 805-278-3543
- Community Concierge - 80 E. Hillcrest Dr, T.O. .... 805-494-3543
- Goodwill Industries of Ventura & Santa Barbara Counties ..... 805-526-5570
- 5145 E. Los Angeles Ave, Simi Valley
- Job Corps - Education - Work - 612 Spring Rd, #101, Moorpark ..... 805-529-0720
- PathPoint - 1463 E. Los Angeles Ave, Simi Valley ..... 805-520-8744
- Simi Valley Youth Employment Service ..... 805-522-4473
- 3855-A Alamo St., Simi Valley

## FOOD (also see Meals)

- FOOD Share - countywide food pantry (call for referral in your area) ..... 805-983-7100
- Sigma Conejo Valley Food Bank - 3020 Crescent Way, T.O. .... 805-497-1296
- (Tuesday, 9:30 a.m.-2:30 p.m.; Thursday, 9:30 a.m.-3:30 p.m.; Saturday, 9:30 a.m.-12:30 p.m.)
- WIC (women, infants, children) ..... 805-981-5251
- or call Toll Free ..... 800-781-4449 #3
- 1133 E. Los Angeles Ave, #B, Simi Valley
- 125 W. Thousand Oaks Blvd, Thousand Oaks

## FOOD

- Catholic Charities - 612 Spring Rd, #101 ..... 805-529-0720
- (Monday-Thursdays, 9 a.m.-1:30 p.m.; Saturday, 9 a.m.-1 p.m.)
- Simi Valley ..... 805-527-1070
- Salvation Army - 1407 E. Los Angeles Ave, #P ..... 805-579-9166
- (Monday-Thursdays, 10 a.m.-2 p.m.)
- Samaritan Center (call for information) - 280 Royal Ave. .... 805-579-9166

## HOUSING

- Christian Church of Thousand Oaks - 301 Avenida de los Flores (1st & 3rd Mondays 4-6 p.m.) ..... 805-492-2474
- Harbor House (by appointment only) ..... 805-464-3533
- Lutheran Social Svcs - 80 E. Hillcrest Dr, #101 ..... 805-497-6207
- Many Mansions/Hacienda de Feliz - 2084 Los Feliz Dr (2nd Saturday/month, 10 a.m.-12 noon) ..... 805-557-2723

## HOUSING/HOMELESS SERVICES

- Area Housing Authority (does NOT provide emergency housing) ..... 805-480-9991
- 1400 W. Hillcrest Dr., Newbury Park
- Cabrillo Economic Development Corporation (affordable housing) ..... 805-659-3791
- Harbor House (by appointment only) ..... 805-464-3533
- Housing Rights Center ..... 800-477-5977; TTY 213-201-0867
- Catholic Charities - 612 Spring Rd, #101, Moorpark ..... 805-529-0720
- Homeless Prevention & Rental Deposit ..... 805-385-1800
- Lutheran Social Services of Southern California ..... 805-497-6207
- 80 E. Hillcrest Dr, #101, Thousand Oaks
- Many Mansions/Housing Central - 1425 E. Thousand Oaks Blvd, T.O. (Monday-Friday, 8:30 a.m.-4:30 p.m.) ..... 805-496-4948
- Mental Health Housing /STAR ..... 866-998-2243
- Salvation Army - Hope Center ..... 805-648-4977
- Samaritan Center - 280 Royal Ave, Simi Valley (mornings Monday-Thursdays) ..... 805-579-9166

## INFORMATION AND REFERRAL

- Dial 2-1-1 for information 24 hours/7 days/week about Community Resources near you ..... 805-477-7300
- Area Agency on Aging (seniors) ..... 800-660-5474
- County of Ventura ..... 805-385-1800
- Homeless Services Program Information

## LAUNDRY

- Lutheran Social Services of Southern CA (Monday, Tuesday, Wednesday, Friday, 9 a.m.-4:30 p.m.) ..... 805-497-6207
- 80 E. Hillcrest Dr, #101, T.O.
- Samaritan Center - 280 Royal Ave, Simi Valley (Monday-Thursdays, 7-11 a.m.) ..... 805-579-9166

## LEGAL SERVICES

- Conejo Free Clinic - 80 E. Hillcrest Dr, #102, Thousand Oaks (call for information) ..... 805-497-3575
- Free Clinic of Simi Valley - 2060 Tapo St, (by appointment only) ..... 805-522-3733
- Simi Valley Court's Family Law Self-Help Center ..... 805-289-8733
- 3855-F Alamo St, 2nd floor
- Ventura Superior Court - Self-Help Legal Access Center ..... 805-289-8724
- 800 S. Victoria Ave, Rm #106, Ventura

## Countywide Legal Services

- California Rural Legal Assistance - 338 S. A St., Oxnard ..... 805-486-1068
- Grey Law (60 yrs.+)- Pleasant Valley Recreation & Park District ..... 1605 Burnley St., Camarillo
- Make a free appointment ..... 805-658-2266
- Housing Rights Center ..... 800-477-5977

## MAIL/MESSAGES

- Moorpark - Catholic Charities - 612 Spring Rd, #101 ..... 805-529-0720
- Simi Valley - Samaritan Center - 280 Royal Ave (mornings) ..... 805-579-9166
- Thousand Oaks - Lutheran Social Services ..... 805-497-6207
- 80 E. Hillcrest Dr, #101

## MAIL/MESSAGES

**Oxnard**  
• Community Action Program of Ventura County  
621 Richmond Ave .....805-436-4000

**Ventura**  
• Catholic Charities – 303 N. Ventura Ave. ....805-643-4694  
• Turning Point Foundation (mentally ill)  
536 E. Thompson Blvd .....805-652-2151

**MEALS** (also see Food)

• Rescue Mission – 6th & Meta, Oxnard – Dinner 5:30–6 p.m.  
(Monday–Friday, 11–11:30 a.m. and Saturday, 12–12:30 p.m.)  
• Many Meals – 121 Davis St, Santa Paula – Wednesday, 5–6 p.m.  
• Family to Family – 303 N. Ventura Ave, Ventura  
(Monday, Wednesday, Friday, 11 a.m.–noon and  
Saturday, Sunday, 8–9 a.m.)

## MEDICAL

• Health Care for the Homeless .....805-652-6694  
• Whole Person Care .....805-339-1122  
email: .....wholepersoncar@ventura.org

## Countywide

• Children's Medical/Dental Services .....805-652-

5960

• Ventura County Medical Center (VCMC)  
300 Hillmont Ave, Ventura .....805-652-6000

## Oxnard

• Clinicas del Camino Real – 650 Meta St. ....805-487-

5351

• Las Flores Women's Ctr – 2400 S. C St. ....805-240-7000  
• Las Islas Medical Clinic – 325 W. ClBkvd .....805-240-9500  
• Public Health Clinic – 2500 S. C St. #D .....805-385-9451  
• Salvation Army – 622 W. Wooley Rd. – free clinic  
(Monday & Thursday) .....805-483-9235

## Santa Paula

• Santa Paula Hospital – 825 N. 10th St. ....805-993-

8880

• Clinicas del Camino Real – (dental & medical)  
200 S. Wells Rd .....805-647-6322  
• Public Health Clinic – 3147 Loma Vista Rd. ....888-285-5012

## MENTAL HEALTH

• Crisis Team – 24-hour Hotline .....866-998-2243  
• Rise Team/OD line .....805-981-4233  
• Mental Health Liaison .....805-981-4227  
Bilingual Liaison .....805-981-3331  
• NAMI (Support/Advocacy)  
5251 Verdugo Way, #K, Camarillo .....805-641-2426  
• STAR (Access to Mental Health Svcs) .....866-998-2243  
• Turning Point Foundation  
New Visions Center 1065 E. Main, Va  
Oxnard Club House – 426 W. 5th St. ....805-652-0596  
• Ventura County Mental Health Services  
4258 Telegraph Rd, Ventura .....805-477-5700  
1911 Williams Dr, Oxnard .....805-981-4200  
2500 S. C St, #C, Oxnard .....805-385-9420  
725 W. Main St, 3rd floor, Santa Paula .....805-933-8480

## SENIOR CITIZENS SERVICES

• 24-hour Helpline .....dial 2-1-1  
• Adult Protective Services (abuse/neglect) .....805-654-3200  
• Area Agency on Aging .....805-654-3200  
• 646 County Square Dr., #100, Ventura .....805-477-7300  
• Mental Health, Older Adult Services .....805-777-3500  
• Ombudsman Services (visit nursing homes) .....805-656-1986  
• Senior Nutrition (meal site information) .....805-477-7300

## SHELTERS

### Domestic Violence Shelters:

• Coalition for Family Harmony .....805-654-1111  
• Spanish Hotline .....800-300-7181  
• Interface Children & Family Services .....805-485-6114

### Year-Round Shelters

• Mercy House: Oxnard Navigation Center + The Arch .....805-399-

9099

• Rescue Mission – (men only) 234 E. 6th St, Oxnard .....805-487-  
• Salvation Army – Hope Center (single adults) .....805-648-

4977

• Turning Point Foundation – Our Place Shelter (mentally ill)  
536 E. Thompson Blvd, Ventura .....805-652-2151  
• 7280 Whitouse – (women & children) .....805-385-  
• Women's Shelter/Kingdom Center, Oxnard .....805-487-

3445

### Winter Shelters – (December–March)

• Ojai Valley Family Shelter (call for information) .....805-804-

7094

• Temporary Emergency Shelter (call for information) .....dial 2-1-

## SHOWERS/TOILETS

• Community Action Program of Ventura County  
621 Richmond, Oxnard .....805-436-4000  
• Our Place Shelter (mentally ill)  
536 E. Thompson Blvd, Ventura .....805-652-2151  
• Rescue Mission – 234 E. 6th St, Oxnard .....805-487-

## TRANSITIONAL HOUSING

• City Center – 837 E. Thompson Blvd, Ventura .....805-628-  
• Kingdom Center (Gabriel's House) 1450 Rose Ave, Oxnard .....805-487-  
3400  
• Lighthouse Family Center, Oxnard .....805-385-7200  
• RAIN Transitional Living Center (families & singles)  
Call for an application .....805-383-7505  
• Tender Life Maternity Home .....805-653-7474  
• Turning Point Countywide Supported Housing  
River Haven (Ventura) .....805-652-2151  
Venturas Transitional Housing (Ventura) .....805-652-0000 x102

## VETERANS SERVICES

• County of Ventura Veteran Services  
2901 N. Ventura Road, 3rd Floor, Oxnard .....805-477-5155  
• Department of Veterans Affairs – Outpatient Clinic  
Veterans Center – Counseling Services (Monday–Friday, 8 a.m.–4:30 p.m.)  
1690 Universe Ct, Oxnard .....805-204-9135  
• Disabled Veterans Outreach (DDO) .....805-288-

8400

• Gold Coast Veterans Foundation  
4001 Mission Oaks Blvd #D, Camarillo .....805-482-6550  
Walk-in hours – Wednesdays, 8 a.m.–4 p.m.

• Ventura Veterans Center (Counseling)  
790 E. Santa Clara St, #1000 .....805-585-1860  
• Veterans Home of Ventura – 10900 Telephone Rd, Ventura .....805-659-  
7502 • Veterans Transitional Housing (Ventura) .....805-652-  
0000 x102

## YOUTH SERVICES

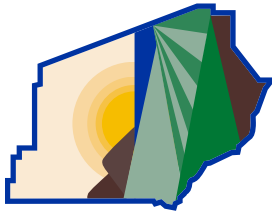
• Interface Youth Rescue Line – 24-hour Hotline .....805-469-  
5882  
• Independent Living Prog (former Foster Youth) .....805-654-  
3245  
• Pacific Clinics – Transition Aged Youth (TAY Tunnel)  
141 W. 5th St, #D, Oxnard .....805-240-2538  
• Teen Runaway Helpline .....800-RUN-AWAY  
• Transitions (Ventura County Behavioral Health) .....805-981-

6830

Toll Free .....866-998-2243

# COUNTY of VENTURA

Human Services Agency



## Resources

for People Experiencing  
Homelessness

# Eastern Ventura County

Camarillo • Fillmore • Ojai • Oxnard  
Port Hueneme • Santa Paula • Ventura

This information current as of  
**September 2022**



COUNTY of VENTURA  
Human Services Agency

This brochure was prepared by:  
County of Ventura Human Services Agency  
Homeless Services Program

**805-385-1800**

**www.vchsa.org**

56-15-069 9/22

Most of the agencies listed can offer only limited, temporary assistance, depending on available funds. Refer to the Eastern Ventura County Resources brochure for resources available in other regions of the county.

Please email updated listings to  
hsa.communications@ventura.org

**ALCOHOL & DRUG SERVICES**

- 24-hour Helpline ..... dial 2-1-1
- County Alcohol/Drug Line ..... 805-981-9200
- Alcoholics Anonymous - Countywide Information ..... 805-389-1444
- Español (Spanish) ..... 805-988-0329
- Anon of Ventura County ..... 805-495-0270
- Oxnard Center - 1911 Williams Dr ..... 805-981-9200
- Ventura Center - 5850 Thille St, #205 ..... 805-652-6919
- Knepera House - 330 N. Ventura Ave, Via ..... 805-653-2596
- Lighthouse Recovery ..... 805-385-7200
- New Start for Moms - 1911 Williams Dr, Oxnard ..... 805-981-9250
- Palmer Drug/Alcohol Abuse Program ..... 805-382-6296
- 2150 N Victoria Ave, Oxnard ..... 805-487-1234
- Rescue Mission (men) - 234 E. 6th St, Oxnard ..... 805-648-3295
- Teen Challenge ..... 805-293-9182
- Victory Outreach - 2875 Elba St, Ventura ..... 805-293-9182

**BENEFITS**

- Human Services Agency - CalWORKS, General Relief, CalFresh Stamps, Medi-Cal
- Oxnard, Port Huenehue, Camarillo
- 1400 Vanguard Dr, Oxnard ..... 805-385-9363
- Santa Paula - 725 E. Main ..... 805-933-8300
- Fillmore - 828 Ventura St, #200 ..... 805-524-8666
- Ventura & Ojai
- 4651 Telephone Rd, #100, Ventura ..... 805-658-4100
- Social Security Administration ..... 800-772-1213
- Oxnard - 2000 Outlet Center Dr, #250
- Ventura - 6477 Telephone Rd, #1
- Unemployment Benefits Claims - English ..... 800-300-5616
- Spanish ..... 800-326-8937

**BUS**

- 114V/Dial-A-Ride ..... 805-485-2319 or 800-488-Information ..... 800-438-1112
- Gold Coast Transit - Countywide Transportation Information ..... 805-988-4228
- Camarillo Area Transit ..... 805-524-2319
- Fillmore Area Transportation Corporation ..... 805-524-2319
- Greyhound Bus - 201 E. 4th St, Oxnard ..... 805-487-2707

- Information ..... 800-231-2222
- Gold Coast Transit - Ventura ..... 805-643-3158
- Oxnard ..... 805-487-4222
- Heritage Valley Dial-A-Ride ..... 805-933-2267
- VCTC Bus Passes ..... 800-438-1112
- Oxnard Transit Center ..... 805-487-4222
- Camarillo City Hall ..... 805-388-5300
- Santa Paula City Hall ..... 805-933-4201
- Fillmore City Hall ..... 805-524-3701

**CAMPGROUNDS/CAMPING**

- County Park Information ..... 805-654-3951
- State Park Information ..... 800-444-7275/805-968-1033
- Fillmore - Kenny Grove - 823N. Oak ..... 805-524-0750
- Ojai - Lake Casitas - 11311 Santa Ana Rd ..... 805-649-2233

- County Beach/Park Campgrounds (14 days maximum)
- Ojai - Camp Comfort - 11969 N. Creek Rd ..... 805-654-3951
- Dennison Park - 7250 Santa Paula/Ojai Rd ..... 805-654-3951
- Santa Paula - Steedel Park ..... 805-654-3951
- Ventura - Emma Wood - Rincon Parkway, Hwy 1 ..... 805-654-8444
- Faria Beach - 4350W. PCH ..... 805-654-3951
- Foster Park - 438 Casitas Vista Rd ..... 805-654-3951
- Hobson Park - 5210 W. PCH ..... 805-654-3951
- Lake Casitas - 11311 Santa Ana Rd ..... 805-649-2233
- State Beach Campgrounds ..... 916-445-8949
- TTY 916-445-8952

**CHILDREN'S SERVICES**

- California Children's Services - VC HCA ..... 805-981-5281
- Children's Crisis Team - 24-hour Hotline ..... 1-866-431-2478
- Child Development Resources (CDR) (childcare, Head Start Preschool) ..... 805-485-7878
- Children & Family Services (abuse/neglect, adoption, foster care) ..... 805-654-3200
- 24-hour Hotline ..... 800-671-0887
- Children's Mental Health (access line) ..... 805-437-1522
- County Schools Homeless Education Project ..... 800-923-1100
- School on Wheels (tutoring/supplies) ..... 800-923-1100

**CITIZENSHIP/IMMIGRATION**

- El Concilio Del Condado - 301 S. St, Oxnard ..... 805-486-9777 x232
- U.S. Citizenship and Immigration Services ..... 800-375-5283
- TTY 800-767-1833

**DENTAL**

- Children - referrals from CHDP ..... 805-981-5291
- Children's Resource Program - 199 Figueroa St ..... 805-641-9802
- Clinicas Del Camino Real (fee for services) Oxnard - 650 Meza St ..... 805-483-3600
- Santa Paula - 500 E. Main St ..... 805-933-8300
- Ventura - 200 S. Wells Rd ..... 805-659-0560
- Oxnard Dental Group ..... 805-278-9499
- Salvation Army Free Clinic - 622 W. Wooley Rd, Oxnard (Call for appointment) ..... 805-483-9235

**DISABLED PERSONS**

- Department of Rehabilitation 1701 Pacific Ave, #120, Oxnard ..... 805-385-2400
- Independent Living Resource Center 1802 Eastman Ave, #112, Ventura ..... 805-650-5993
- Voice/Fax (TTY) 805-650-5993 Video phone ..... 805-256-1036
- Tri-Counties Regional Center 2401 E. Gonzales Rd, #100, Oxnard ..... 805-485-3177

**DOMESTIC VIOLENCE**

- Adult & Child Abuse & Neglect - 24-hour Hotline ..... 805-654-3200
- 24-hour Bilingual Hotline ..... 800-300-2181
- Coalition for Family Harmony ..... 805-654-1111
- Interface Children & Family Services ..... 800-636-6738

**805-385-1800**

County of Ventura Human Services Agency • Homeless Services Program

- Community Action Program of Ventura County 621 Richmond Ave, Oxnard ..... 805-436-4000
- Ojai Community Assist Program - 108 Fox St, Ojai ..... 805-640-3320
- One-Stop Centers ..... 805-652-6694
- Camarillo - Church of the Nazarene 280 Antonio Ave (4th Thursday, 8:30-11 a.m.)
- Oxnard - The Salvation Army, 622 W. Wooley Rd (Wednesday, 8:30-11 a.m.)
- Santa Paula - Buen Pastor Church, 1029 E. Santa Paula St (Friday, 9-11:30 a.m.)
- Ventura - Public Health Auditorium, 3147 Loma Vista (10 a.m.-12:30 p.m.)
- River Haven - Harbor Blvd & Olivias Park Dr (Monday, 12:30-3:30 p.m.)

**EMPLOYMENT/JOB TRAINING**

- Applicant's Job Center - 2901 N. Ventura Rd, Oxnard ..... 805-204-
- Center for Employment Training (CET) - 761 S. St, Oxnard ..... 805-487-9821
- Community Action of VC - 621 Richmond, Oxnard ..... 805-436-
- Employment Development Department (EDD) 2901 N. Ventura Rd, Oxnard ..... 805-288-8400
- Employee Aptitude & Placement 660 N. Ventura Ave, Ventura (Monday-Friday, 9-11 a.m.) ..... 805-648-5868
- Fillmore Active Adult Center 533 Santa Clara St, Fillmore ..... 805-933-8300
- Goodwill Industries - 130 Lombard St, Oxnard ..... 805-981-0130
- Job Corps (16-24-year olds) ..... 800-733-5627
- Ojai Community Assist Program - 108 Fox St, Ojai ..... 805-640-3320
- Santa Clara Valley Community Service Center 725 E. Main St, #301, Santa Paula ..... 805-933-8300
- Unemployment Benefits Claims - English ..... 800-300-5616
- Spanish ..... 800-326-8937
- Ventura Community Service Center - 4651 Telephone Rd ..... 805-454-
- Workforce Development Board (WDB) 2901 N. Ventura Road, 3rd floor, Oxnard ..... 805-477-5306

**FOOD (also see Meals)**

- Food Share - countywide food pantry information ..... 805-983-
- Community Action of VC - 621 Richmond, Oxnard ..... 805-436-4000
- Community Assistance of Santa Paula (CASP) 133 N. Mill St (Monday) ..... 805-525-8880
- Community Assist Program - 108 Fox St, Ojai ..... 805-640-
- Spirit of Santa Paula (call first) ..... 805-340-5025
- YMC (women, infants, children) ..... Toll Free 800-781-4449

**HOMELESS & HOUSING SERVICES**

- Cabrillo Economic Development Corporation (affordable housing) 702 County Square Dr, #100, Ventura ..... 805-659-3791
- 287 Riverpark Blvd, Oxnard ..... 805-485-2260
- Community Action Program - 621 Richmond, Oxnard ..... 805-436-4000
- Housing Rights Center ..... 800-477-5977
- Homeless Prevention & Rental Deposit ..... 805-385-1800
- Many Mansions - Housing Central ..... 805-497-0344
- Mental Health Housing/STAR ..... 866-998-2243

- Project Understanding - 7734 Johnson Dr, #E ..... 805-652-1326
- St. Vincent de Paul ..... 805-487-1558
- The Salvation Army, Safe Sleep (Ventura) ..... 805-648-5932
- Turning Point Foundation (mentally ill) 536 E. Thompson Blvd, Ventura ..... 805-652-2151

**HOUSING AUTHORITIES**

- No emergency housing provided)
- Housing Rights Center ..... 800-477-5977
- Area Housing Authority (Ojai & unincorporated areas) 1400W. Hillcrest Dr, Newbury Park ..... 805-480-9991
- Oxnard Housing Authority - 435 S. D St ..... 805-385-8041
- Public Housing ..... 805-385-8114
- Section 8 ..... 805-385-8097
- Port Huenehue Housing Authority 250 N. Ventura Rd ..... 805-986-6527
- Santa Paula Housing Authority 15500W. Telegraph Rd, #811 ..... 805-525-3339
- Ventura Housing Authority 15500W. Telegraph Rd, #811 ..... 805-648-5008
- Public Housing - 995 Riverside St, Section 8 - 11222 Snapdragon St, #100 ..... 805-647-5990

**INFORMATION AND REFERRAL**

- Dial 2-1-1 for information 24 hours/7 days/week about Community Resources near you ..... 805-477-7300
- Area Agency on Aging (seniors) ..... 800-660-5474
- County of Ventura ..... 805-385-1800
- Homeless Services Program Information ..... 805-385-1800

**LAUNDRY**

- Community Action Program of Ventura County 621 Richmond, Oxnard (Monday & Friday only, 8 a.m.-noon) ..... 805-436-4000
- Community Assistance Program 108 Fox St, Ojai ..... 805-640-3320
- Laundry of Love - Ventura County Mission Plaza - 110 N. Olive - 1st Tuesday, 5:30-8 p.m. Quik Wash - 9298 Telephone Rd - 2nd Tuesday, 5-7 p.m. 2611 E. Thompson Blvd. - 3rd Tuesday, 5:30-8 p.m.
- Turning Point Foundation (mentally ill) 536 E. Thompson Blvd, Ventura ..... 805-652-2151

**LEGAL SERVICES**

- California Bar Association - Legal Clinic - (family law/tenant/landlord/bankruptcy) (Monday-Friday) ..... 805-650-7599
- California Rural Legal Assistance 338 S. A St, Oxnard ..... 805-483-8083
- Grey Law (60 yrs+) 3585 Maple St, #128, Ventura ..... 805-658-2266
- Housing Rights Center ..... 800-477-5977
- Jewish Family Services - 740 E. Main St, Via ..... 805-641-6565
- Self-Help Legal Access Center Ventura 800 S. Victoria Ave, Rm #106, Ventura ..... 805-289-8724